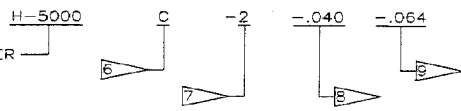


THIS DRAWING AND THE INFORMATION CONTAINED THEREIN IS PROPRIETARY TO HARTWELL CORPORATION AND IS FURNISHED ONLY FOR USE IN CONNECTION WITH ITS SUPPLY OF THE DEVICE ILLUSTRATED THEREON. AUTHORIZATION IS GIVEN TO USE, REPRODUCE, TO OTHERS, OR MAKE COPIES OF THIS DRAWING AND THE INFORMATION CONTAINED THEREIN ONLY AS NECESSARY TO CARRY OUT THE PURPOSE FOR WHICH THE DRAWING AND INFORMATION CONTAINED THEREIN IS FURNISHED TO THE UNITED STATES GOVERNMENT FOR RESEARCH, DEVELOPMENT, TESTING, EVALUATION, AND MANUFACTURE. INFORMATION CONTAINED HEREIN SHALL BE RELEASED OUTSIDE THE GOVERNMENT ONLY BY THE UNITED STATES GOVERNMENT TO THE EXTENT PERMITTED BY FEDERAL LAWS. UNLESS HARTWELL CORPORATION IS NOT ABLE TO FURNISH THE QUANTITY OF THE ITEM SPECIFIED IN THIS DRAWING TO THE UNITED STATES GOVERNMENT IN A TIMELY MANNER, NECESSARY OVER-RUN AND RETAIN WORK.

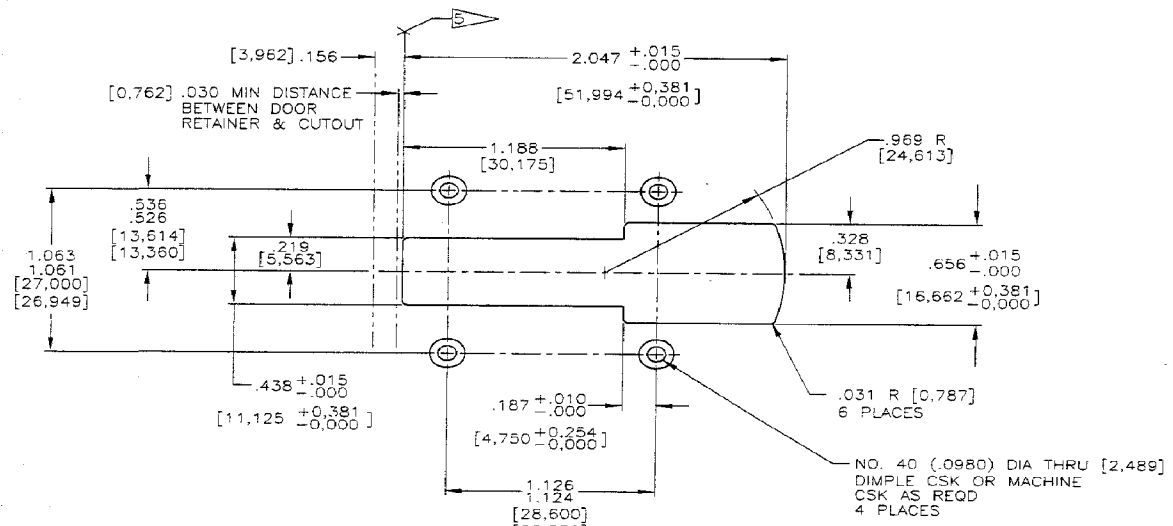
LET.	REVISION	BY	DATE	DATE	STRESS	CD	CHECK
AK	INCORP. FB 6328. REMOVE PATENT NO. REVISED FLAG NOTES 11 & 13. ADDED REV STATUS BLOCK. UPDATED SPECS ESR P2-2138 DISP. USE	C	7/98	7/98			
AL	FLAG NOTES 11 & 13. ADDED "OR MARK WITH PERMANENT INK" UPDATED SPECS & REV. BLOCK REASON: ESR I-5759 DISP. USE	L	4/99	4/99			

9	8	9	8
.025 [0,635]	.025 [0,635]	.156 [3,962]	.188 [4,775]
.032 [0,813]	.032 [0,813]	.164 [4,166]	
.040 [1,016]	.040 [1,016]	.179 [4,547]	
.051 [1,295]	.051 [1,295]	.188 [4,775]	
.064 [1,626]	.064 [1,626]	.196 [4,978]	
.072 [1,829]	.072 [1,829]	.218 [5,537]	
.081 [2,057]	.081 [2,057]	.235 [5,969]	
.091 [2,311]	.091 [2,311]	.250 [6,350]	
.096 [2,436]	.102 [2,591]	.268 [6,807]	
.102 [2,591]	.115 [2,921]	.279 [7,087]	
.115 [2,921]	.125 [3,175]	.292 [7,417]	
.125 [3,175]	.142 [3,607]	.312 [7,925]	
.132 [3,353]	.156 [3,962]	.340 [8,636]	
.142 [3,607]	.164 [4,166]		

- 16 MAX TRIGGER TRAVEL REQUIRED TO RELEASE BOLT
- 15 ALTERNATE SPECIFICATION-ASTM A366
- 14. FOR OPTIONAL MATERIALS AND ALTERNATE SPECIFICATIONS SEE HSP1000
- 13 STEEL STAMP OR MARK WITH PERMANENT INK 1/16 HIGH BLOCK LETTERS ALL INFORMATION AS SHOWN, INCLUDING TRADEMARK
- 12. DIMENSIONS IN "[]" BRACKETS ARE IN MILLIMETERS
- 11 STEEL STAMP OR MARK WITH PERMANENT INK AS FOLLOWS: FOR PARTS MANUFACTURED IN EUROPE STAMP "EUROPE" FOR PARTS MANUFACTURED IN USA STAMP "USA"
- 10. EXAMPLE PART NUMBER:



- 9 DESIGNATES SKIN THICKNESS PLUS BACKING PLATE OR DOUBLER, IF USED (BOLT OFFSET)
- 8 DESIGNATES DOOR THICKNESS (TRIGGER OFFSET)
- 7 "-2" DESIGNATES STANDARD ASSEMBLY
"-3" DESIGNATES LIMITED BOLT ROTATION ASSEMBLY
- 6 " " DESIGNATES 300 SERIES CRES, PASSIVATED ASSEMBLY
"C" DESIGNATES LOW CARBON STEEL, CADMIUM PLATED ASSEMBLY
"N" DESIGNATES LOW CARBON STEEL, ZINC PLATED ASSEMBLY
"P" DESIGNATES 300 SERIES CRES CADMIUM PLATED ASSEMBLY
"T" DESIGNATES LOW CARBON STEEL CADMIUM PLATED PER QQ-P-416, TYPE II CL 2
- 5 LENGTH OF CUTOUT AT BOLT END WILL VARY FOR DIFFERENT COMBINATIONS OF BOLT AND TRIGGER OFFSETS. FIT DESIRED TO BE DETERMINED BY THE USER
- 4 RIVET PER HSP219, TYPE II
- 3. TRIGGER WILL NOT DEPRESS UNDER POSITIVE AIR LOADS UP TO 6 PSI
- 2 PARTS MAY BE ORDERED BY COMPLETE NUMBER AS ILLUSTRATED IN NOTE 10 OR BY SHORTENED NUMBER WHICH OMITTS THE -2 AFTER THE H-5000 & ALSO OMITTS THE DECIMAL POINTS FOR THE TRIGGER & BOLT OFFSETS (H-5000-040-064). PARTS ORDERED BY EITHER METHOD WILL BE PART MARKED WITH THE -2 FOLLOWING THE BASIC ASSEMBLY NUMBER (H-5000) FOR MODEL IDENTIFICATION ONLY. DIMENSIONAL & FUNCTIONAL INTERCHANGEABILITY IS NOT EFFECTED
- 1. THIS LATCH ASSEMBLY IS DIMENSIONALLY INTERCHANGEABLE WITH THE H-4600 LATCH ASSEMBLY



NOT TO SCALE

FEB 25 2002

QTY	PART NUMBER	NOMENCLATURE	STOCK SIZE	MATERIAL	SPECIFICATION	HEAT TREAT	FINISH
1	H-4603-13	TRIGGER		LOW CARBON STEEL	ASTM A366		CADMIUM PLATED PER QQ-P-416, TY II, CL 2
1	H-4602-11	BOLT		LOW CARBON STEEL	ASTM A366		CADMIUM PLATED PER QQ-P-416, TY II, CL 2
1	H-4601-13	BRACKET		LOW CARBON STEEL	ASTM A366		CADMIUM PLATED PER QQ-P-416, TY II, CL 2
2	HSP207-1(-)	RIVET		300 SERIES CRES	AMS-QQ-S-763		PASSIVATED PER AMS-QQ-P-36
1	H-5000T-2	LATCH ASSY					
1	H-4731-6	SPRING		17-7PH	AMS 5478	COND. CHRGD/PER AMS 2756/2	PASSIVATED PER AMS-QQ-P-36
1	H-4603-11	TRIGGER		300 SERIES CRES	AMS 5513		CADMIUM PLATED PER QQ-P-416, TY II, CL 2
1	H-4603-9	TRIGGER		LOW CARBON STEEL	ASTM A366		ZINC PLATED/ASTM B633, TY II, CL 2/2/5
1	H-4603-2	TRIGGER		300 SERIES CRES	AMS 5513		PASSIVATED PER AMS-QQ-P-36
1	H-4603-1	TRIGGER		LOW CARBON STEEL	ASTM A366		CADMIUM PLATED PER QQ-P-416, TY II, CL 2
1	112453-5	BOLT		300 SERIES CRES	AMS 5513		CADMIUM PLATED PER QQ-P-416, TY II, CL 2
1	112453-3	BOLT		LOW CARBON STEEL	CRCQ, QQ-S-636		ZINC PLATED/ASTM B633, TY II, CL 2/2/5
1	112453-2	BOLT		300 SERIES CRES	AMS 5513		PASSIVATED PER AMS-QQ-P-36
1	112453-1	BOLT		LOW CARBON STEEL	CRCQ, QQ-S-636		CADMIUM PLATED PER QQ-P-416, TY II, CL 2
1	H-4602-7	BOLT		300 SERIES CRES	AMS 5513		CADMIUM PLATED PER QQ-P-416, TY II, CL 2
1	H-4602-5	BOLT		LOW CARBON STEEL	CRCQ, QQ-S-636		ZINC PLATED/ASTM B633, TY II, CL 2/2/5
1	H-4602-2	BOLT		300 SERIES CRES	AMS 5513		PASSIVATED PER AMS-QQ-P-36
1	H-4602-1	BOLT		LOW CARBON STEEL	CRCQ, QQ-S-636		CADMIUM PLATED PER QQ-P-416, TY II, CL 2
1	H-4601-11	BRACKET		300 SERIES CRES	AMS 5513		CADMIUM PLATED PER QQ-P-416, TY II, CL 2
1	H-4601-9	BRACKET		LOW CARBON STEEL	CRCQ, QQ-S-636		ZINC PLATED/ASTM B633, TY II, CL 2/2/5
1	H-4601-2	BRACKET		300 SERIES CRES	AMS 5513		PASSIVATED PER AMS-QQ-P-36
1	H-4601-1	BRACKET		LOW CARBON STEEL	CRCQ, QQ-S-636		CADMIUM PLATED PER QQ-P-416, TY II, CL 2
	H-5000P-3	LATCH ASSY					
	H-5000N-3	LATCH ASSY					
	H-5000C-3	LATCH ASSY					
	H-5000-3	LATCH ASSY					
	H-5000P-2	LATCH ASSY					
	H-5000N-2	LATCH ASSY					
	H-5000C-2	LATCH ASSY					
	H-5000-2	LATCH ASSY					

NOTES: UNLESS OTHERWISE SPECIFIED

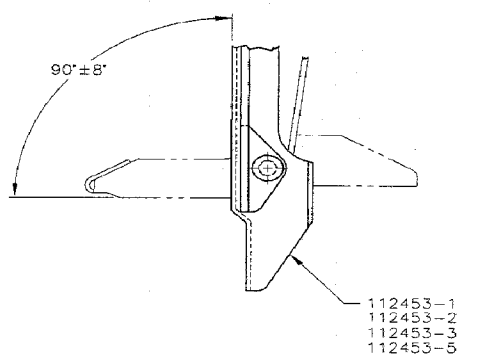
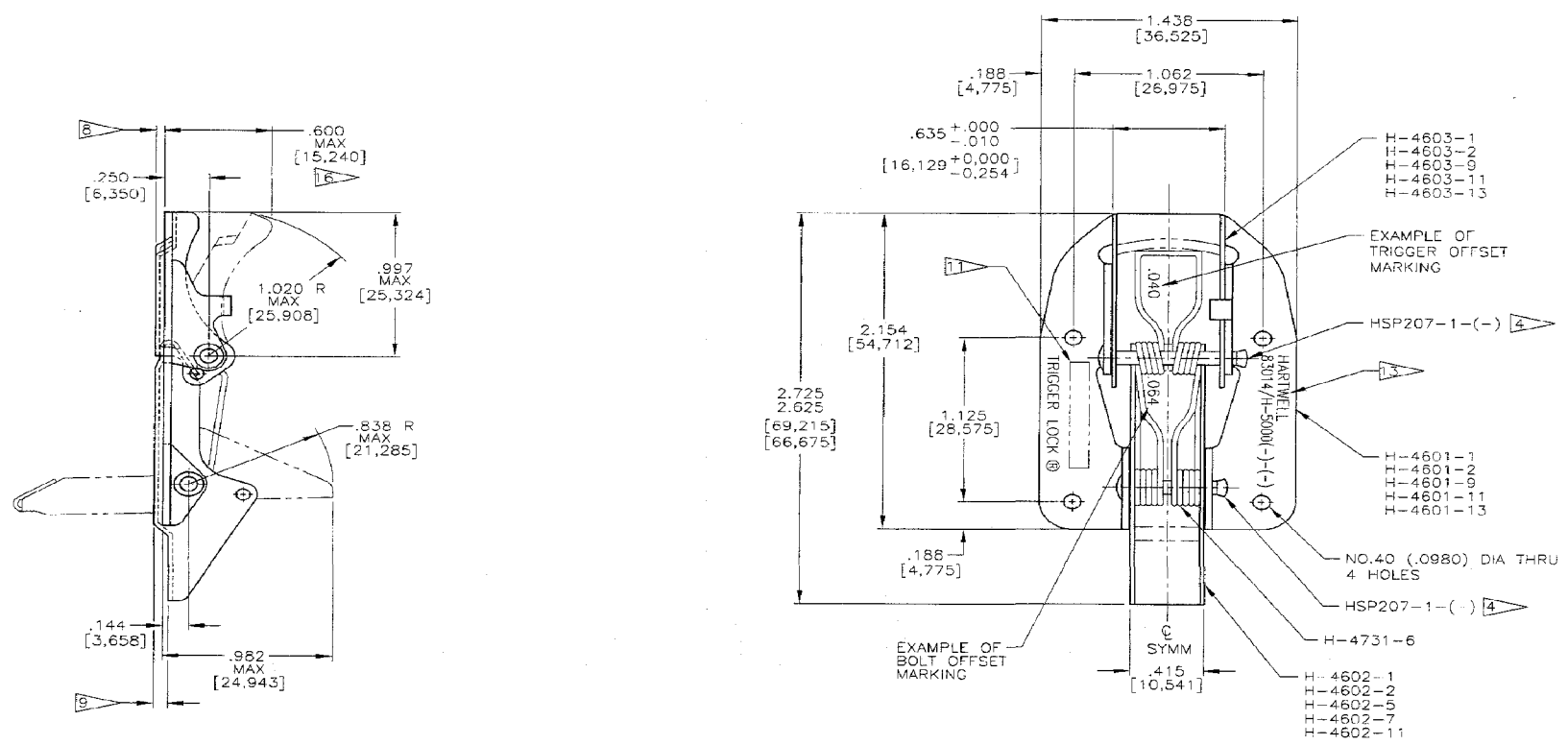
AA	AL	REVISION	REV STATUS OF SHEETS
2	1	SHEET	

NO.	PART NUMBER	NOMENCLATURE	STOCK SIZE	MATERIAL	SPECIFICATION	HEAT TREAT	FINISH
H-5000T2							
H-5000P3							
H-5000N3							
H-5000C3							
H-5000-3							
H-5000P2							
H-5000N2							
H-5000C2							
H-5000-2							

H-5000 SHEET 1 OF 2

THIS DRAWING AND THE INFORMATION CONTAINED THEREIN IS PROPRIETARY TO HARTWELL CORPORATION AND IS FURNISHED ONLY FOR USE IN CONNECTION WITH ITS SUPPLY OF THE DEVICE ILLUSTRATED THEREIN. AUTHORIZATION IS GIVEN TO USE, DISCLOSE, TO OTHERS, OR MAKE COPIES OF THIS DRAWING AND THE INFORMATION CONTAINED THEREIN ONLY AS NECESSARY TO CARRY OUT THE PURPOSES FOR WHICH THE DRAWING AND INFORMATION CONTAINED THEREIN IS FURNISHED TO THE UNITED STATES GOVERNMENT FOR PROSECUTION, NO PORTION OF THE DRAWING AND INFORMATION CONTAINED THEREIN IS TO BE RELEASED OUTSIDE THE GOVERNMENT UNLESS HARTWELL CORPORATION IS FIRST ADVISED BY THE GOVERNMENT. UNLESS HARTWELL CORPORATION IS NOTIFIED TO FURNISH THE QUANTITY OF THE ITEM SPECIFIED BY THIS DRAWING TO ENABLE GOVERNMENTS TO PERFORM IN A TIMELY FASHION, NECESSARY MAINTENANCE AND REPAIR WORK.

LET.	REVISION	W. O. BY	DATE	DATE	CHECK
AA	INCORPORATE 6325, REMOVED "A" AND PATENT NO. FROM ID AND TITLE BLOCK REVISED IDENTIFICATION CALLOUT ECR. P3-2135 DISP. USE				



-3 LATCH ASSY
(SAME AS -2 ASSY EXCEPT AS SHOWN, LIMITED BOLT ROTATION)

NOT TO SCALE

SEE SHEET 1 FOR NOTES & LIST OF MATERIAL

FEB 25 2002

NO. REV.	PART NUMBER	NOMENCLATURE	STOCK SIZE	MATERIAL	SPECIFICATION	HEAT TREAT	FINISH
	LIMITS UNLESS NOTED .XX ± .03 .XXX ± .010 ANGULAR TOL. ± 1/2° SURFACE ROUGHNESS RHR PER USAS B46.1 BREAK SHARP EDGES	PATENT NOTICE: UNAUTHORIZED USE, MANUFACTURE OR REPRODUCTION IN WHOLE OR PART IS PROHIBITED.	DRAWN CHECKED ENGINEER STRESS APPROVED	C.FINTA R.H.V.	HARTWELL CORPORATION 900 S. Riceland Rd., Pico, California 92070		SCALE: 2/1 CODE IDENT NO. 83014 UNIT WEIGHT
		LATCH ASSEMBLY FLUSH					H-5000 SHEET 2

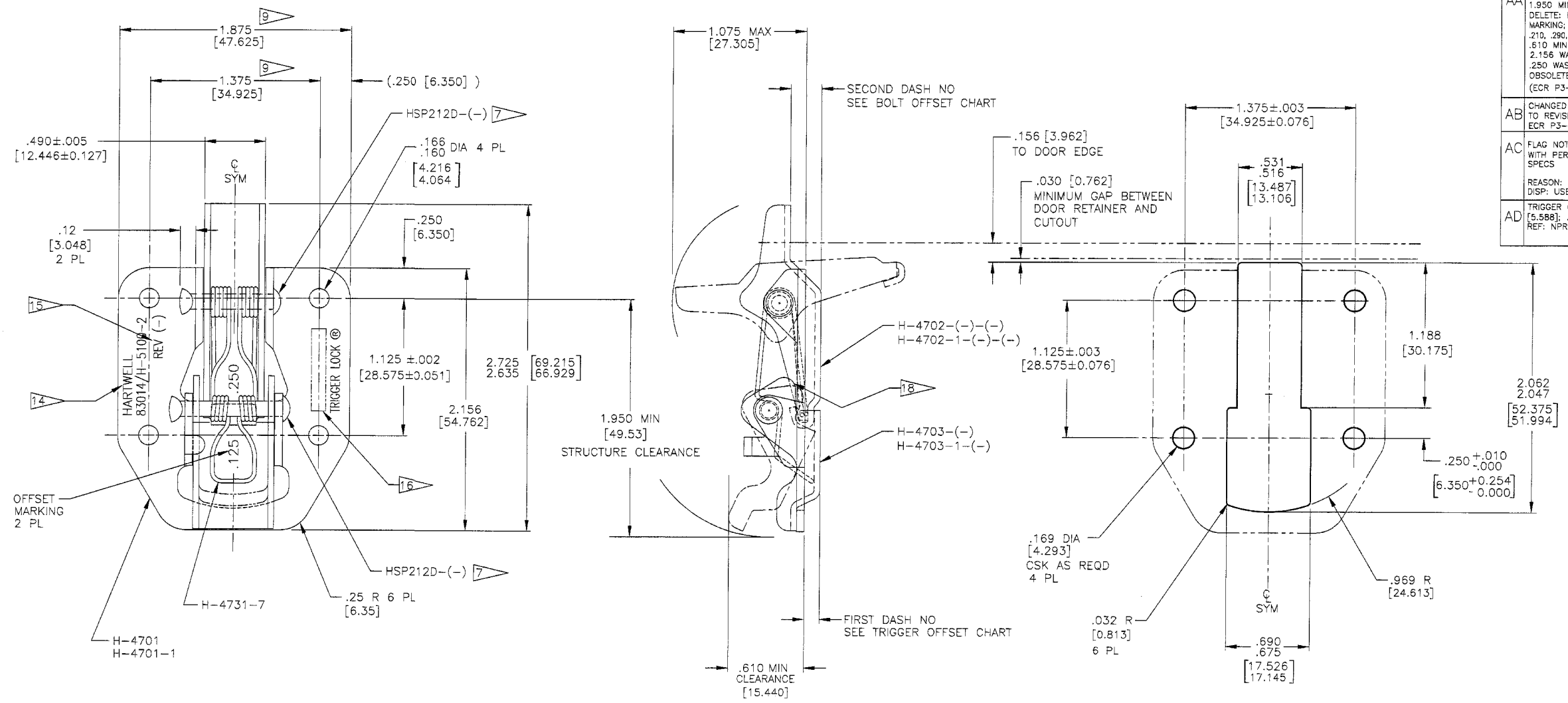
DRAWING NO. H-5000 SHEET 2 OF 2 REV. AA

THIS DRAWING AND THE INFORMATION CONTAINED THEREIN IS PROPRIETARY TO HARTWELL CORPORATION AND IS FURNISHED ONLY FOR USE IN CONNECTION WITH THE SUPPLY OF THE DEVICE ILLUSTRATED THEREIN. AUTHORIZATION IS GIVEN TO USE, DISCLOSE TO OTHERS OR MAKE COPIES OF THIS DRAWING AND THE INFORMATION CONTAINED THEREIN ONLY AS NECESSARY TO CARRY OUT THE PURPOSE FOR WHICH THE DRAWING AND INFORMATION CONTAINED THEREIN IS FURNISHED TO THE UNITED STATES GOVERNMENT FOR PRODUCTION. NO PORTION OF THIS DRAWING AND INFORMATION THEREON CONTAINED SHALL BE RELEASED OUTSIDE THE GOVERNMENT (EXCEPT FOR THE FOREIGN GOVERNMENTS SUBJECT TO THESE SAME LIMITATIONS) UNLESS HARTWELL CORPORATION IS NOT ABLE TO FURNISH THE QUANTITY OF THE ITEM DEPICTED IN THIS DRAWING TO ENABLE GOVERNMENTS TO PERFORM IN A TIMELY FASHION, NECESSARY OVERHAUL AND REPAIR WORK.

THIS DRAWING HAS BEEN GENERATED AND IS MAINTAINED BY A CAD SYSTEM. CHANGES SHALL ONLY BE INCORPORATED AS DIRECTED BY THE DESIGN ACTIVITY.

LET.	REVISION	BY	DATE	T	D	C	A	S
AA	REVISED & REDRAWN: WAS C SIZE, 2-SHOTS; UPDATE SPECS; ADD: NOTES 13 THRU 18, .25R 6PL, 1.950 MIN STRUCTURAL CLEARANCE, DELETE: PATENT NO. 'LA' AT IDENT MARKING; G/N 2, 3, 5, B & 10; DIMS .210, .280, .130/.160, .826 MIN, .865R MAX; .610 MIN CLEAR. WAS .610 MAX; .250 WAS .250 +.030/-0.10; OBSOLETE H-5100C ASSY (ECR P3-1871) DISP: USE	T	4-12-96	N	N	N	N	N
AB	CHANGED FLAG NOTED 14 AND 16 TO REVISE IDENTIFICATION ECR P3-2135 DISP: USE	C	7-9-98	L	W	J	J	J
AC	FLAG NOTE 14: ADDED "OR MARK WITH PERMANENT INK". UPDATED SPECS	L	4-7-99	M	M	M	M	M
AD	TRIGGER OFFSET: ADDED .220 [5.588]; .164 [4.166] REF: NPR 3512-3 DISP: USE	P	5-1-00	N	N	N	N	N

TRIGGER OFFSETS	BOLT OFFSETS
.025 [0.635]	.032 [0.813]
.032 [0.813]	.040 [1.016]
.040 [1.016]	.051 [1.295]
.051 [1.295]	.064 [1.626]
.064 [1.626]	.072 [1.829]
.072 [1.829]	.081 [2.057]
.081 [2.057]	.091 [2.311]
.091 [2.311]	.096 [2.438]
.102 [2.591]	.102 [2.591]
.115 [2.921]	.115 [2.921]
.125 [3.175]	.125 [3.175]
.156 [3.962]	.142 [3.607]
.164 [4.166]	.156 [3.962]
.188 [4.775]	.164 [4.166]
.220 [5.588]	.179 [4.547]
	.188 [4.775]
	.196 [4.978]
	.218 [5.537]
	.250 [6.350]
	.275 [6.985]
	.312 [7.925]
	.330 [8.382]



NOT TO SCALE

- 16 UNITS ASSEMBLED IN MEXICO STAMP "MEXICO"
UNITS ASSEMBLED IN EUROPE STAMP "EUROPE"
UNITS ASSEMBLED IN USA STAMP "USA"
- 15 MARK APPLICABLE REVISION LETTER ADJACENT TO PART NUMBER
- 14 STEEL STAMP OR MARK WITH PERMANENT INK IDENTIFICATION AND TRADEMARK AS SHOWN
- 13. ULTIMATE LOAD = 500 LBS [2224 N]
- 12. FOR CURRENT MATERIALS AND PROCESS SPECIFICATIONS, SEE HARTWELL DWG HSP1000
- 11. DIMENSIONS IN "[]" BRACKETS ARE MILLIMETERS
- 10. REMOVED
- 9 DIMENSION APPLICABLE IN MOUNTED CONDITION
TOLERANCE IS $\pm .030$ [±0.762] FOR UNMOUNTED LATCH (FREE CONDITION)
- 8. REMOVED
- 7 RIVET PER HSP 219, TYPE II
- 6 HSP214-1-(-) OPTIONAL. INSTALL PER 7 AT BOTH ENDS
- 5. REMOVED
- 4 PARTS MAY BE ORDERED BY COMPLETE NUMBER AS ILLUSTRATED OR BY SHORTENED NUMBER WHICH OMITTS THE -2 AFTER THE H-5100 & ALSO OMITTS THE DECIMAL POINTS FOR THE TRIGGER & BOLT OFFSETS (H-5100-040-064). PARTS ORDERED BY EITHER METHOD WILL BE MARKED WITH THE -2 FOLLOWING THE BASIC ASSEMBLY NUMBER (H-5100) FOR MODEL IDENTIFICATION ONLY. DIMENSIONAL AND FUNCTIONAL INTERCHANGEABILITY NOT AFFECTED
- 3. REMOVED
- 2. REMOVED
- 1. REMOVED

- 18 UNDERLYING EDGES OF TRIGGER REMAIN BELOW MOUNTING SURFACE THROUGH DEFLECTION RANGE
 - 17. PROCUREMENT INFORMATION:
FIRST DASH NUMBER DESIGNATES THE DOOR THICKNESS WHICH CORRESPONDS TO THE TRIGGER OFFSET. THE SECOND DASH NUMBER DESIGNATES SKIN THICKNESS PLUS BACKING PLATE OR DOUBLER, WHICH CORRESPONDS TO THE BOLT OFFSET. SEE TABULATION BLOCKS FOR AVAILABLE OFFSETS
- EXAMPLE OF PART NUMBER: H-5100-2-.040-.064
- 4 BASIC ASSY
H-5100- = CORROSION RESISTANT STEEL ASSEMBLY
H-5100C = COLD ROLLED STEEL, CADMIUM PLATED ASSEMBLY
 - 7 BOLT OFFSET (STAMPED UNDERSIDE OF BOLT)
 - 4 TRIGGER OFFSET (STAMPED UNDERSIDE OF TRIGGER)

SEP 16 2004

NO.	NO. REV.	PART NUMBER	NOMENCLATURE	STOCK SIZE	MATERIAL	SPECIFICATION	HEAT TREAT	FINISH	
1	1	HSP212D-(-)	RIVET	300 SERIES CRES	AMS-QQ-S-763			PSVT/ASTM A967	
1	1	HSP212D-(-)	RIVET	300 SERIES CRES	AMS-QQ-S-763			PSVT/ASTM A967	
1	1	H-4731-7	SPRING	17-7 PH CRES	AMS 5678	190 KSI MIN/2759/3		PSVT/ASTM A967	
1	1	H-4703-1-(-)	TRIGGER	COLD RLD STL	ASTM A366			CAD PL700-P-416 TY 1, CL 2	
1	1	H-4703-(-)	TRIGGER	300 SERIES CRES	AMS 5513/5516			PSVT/ASTM A967	
1	1	H-4702-1-(-)	BOLT	COLD RLD STL	ASTM A366			CAD PL700-P-416 TY 1, CL 2	
1	1	H-4702-(-)	BOLT	300 SERIES CRES	AMS 5513/5516			PSVT/ASTM A967	
1	1	H-4701-1	BRACKET	COLD RLD STL	ASTM A366			CAD PL700-P-416 TY 1, CL 2	
1	1	H-4701	BRACKET	300 SERIES CRES	AMS 5513/5516			PSVT/ASTM A967	
-	-	H-5100C-(-)	LATCH ASSY	OBSOLETE USE H-5100					
-	-	H-5100-(-)	LATCH ASSY						

NO.	NO. REV.	PART NUMBER	NOMENCLATURE	STOCK SIZE	MATERIAL	SPECIFICATION	HEAT TREAT	FINISH
1	1	H-5100	LATCH ASSY, TRIGGER LOCK, SINGLE BUTTON					

SCALE: NONE
UNIT WEIGHT: 1.6 OZ

DWG NO. H-5100 SHEET REV. AD