

# ALUMINUM HINGE – STRINGERS

## PIANO HINGE

**MS20257P** (supercedes AN257) hinge consists of two aluminum half hinges which mate and are held together by a hinge pin. Anodized finish. MS20257C is similar to MS20257P except made in stainless steel.



**MS20001P** aluminum hinge is extruded. The closed hinge loops cannot be pulled apart. Furnished with hinge pin. Anodized finish.

Part No.*	Open Width	Thickness	Price/Length	
			3 Ft.*	6 Ft.*
MS20257P1	3/4"	.032"	\$5.25	\$10.50
MS20257P2	1-1/16"	.040"	\$6.00	\$11.99
MS20257P3	1-1/4"	.040"	\$5.35	\$10.70
MS20257P4	1-1/2"	.040"	\$5.48	\$10.95
MS20257P5	2"	.051"	\$8.25	\$16.50
MS20001P3	1-1/4"	.040"	\$32.65	\$62.75
MS20001P4	1-1/2"	.040"	\$28.83	\$57.65
MS20001P5	1-3/4"	.051"	\$31.50	\$63.80
MS20001P6	2"	.051"	\$33.88	\$67.75
MS20257C1	3/4"	.031"	\$6.75	\$13.50
MS20257C2	1-1/16"	.037"	\$6.88	\$13.75
MS20257C3	1-1/4"	.050"	\$11.75	\$23.50
MS20257C4	1-1/2"	.062"	\$10.43	\$20.85
MS20257C5	2"	.062"	\$14.95	\$29.90

\* Add "-3" to part number for 3 ft. pc. and "-6" to part number for 6 ft. pc.  
**Example:** MS20001P6-3 is 3 ft. pc. of MS20001P6 hinge.

### HINGE PIN ONLY – Stainless Steel

089" Dia. x 6' .....P/N 03-49000 ..... \$4.45

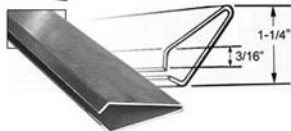


## BARGAIN BAG OF ALUMINUM TUBING

Approximately 20 ft. Assorted sizes of 2024 and 6061 aluminum tubing, angle, rod, and bar  
 P/N 03-40100 ..... \$14.95

### 6063T52 U CHANNEL

3/4"x 3/4"x1/8" .....P/N 03-38950 .....\$4.50/ft.  
 1"x1"x1/8" .....P/N 03-39050 .....\$2.95/ft.  
 1-1/4"x1-1/4"x1/8" .....P/N 03-39150 .....\$4.95/ft.



### TRAILING EDGE

Fabricated of .025 aluminum 3003H14 to size illustrated. Wt. 12oz. per 10ft. length. Shipped via truck. **No charge for cutting to 8 ft. or less for UPS shipment.**

10 Ft. Length.....P/N 03-48900 ..... \$24.50

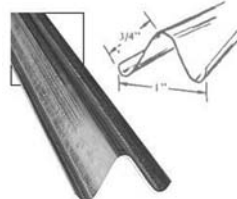
**Less 20% on 12 or more lengths. Please add \$2.00 carton charge for trailing edge - this box insures safe UPS shipment.**



## RECTANGULAR ALUMINUM STRINGERS

Rectangular stringers, 5/8" x 5/16" x .032" 3003H14 aluminum. Wt. 11 oz./12ft. length. Shipped via truck. **No charge for cutting to 8ft. or less for UPS shipment.**

12 Ft. Length .....P/N 03-48800 ..... \$7.85



## "HAT" SECTION ALUMINUM STRINGERS

Fabricated from .020 2024T3 aluminum. Wt. 5 oz. per 8-ft. length. May be spliced to form longer stringers.

8-Ft. Length .....P/N 03-46500 ..... \$10.75  
**Less 10% on orders for 12 or more.**



## 2024T3511 2 X 1-3/4 T ALUMINUM

2024T3511 2" X 1-3/4" T extruded aluminum. Price per foot.  
 P/N 03-00093 .....\$78.75

## WELDING ROD FOR ALUMINUM

### ALUMINUM



**ER4043** – A versatile alloy well suited for welding 6061T-6, 5005, and 6063. Extremely ductile.  
 1/16" dia. .... P/N 03-27520. \$21.85/lb.  
 3/32" dia. .... P/N 03-27525. \$17.50/lb.

**ER5356** – Combination of strength and ductility for welding 5083, 5086, and 7000 series. Deposit can be anodized after welding.

1/16" dia.....P/N 03-27530 .....\$14.50/lb.

**UTP A-65** – A multi alloy wire for a wide range of base materials including stainless steel, low alloy high strength steel and especially outstanding for dissimilar metals with over 120,000 psi tensile strength and 25% elongation. Machinable. 1/16" dia.....P/N 03-27555 .....\$55.75/lb.

## BRAZING ALLOYS

**UTP 1M** – High strength, machinable torch rod for steel, brass, bronze and other copper alloys. Easy to apply, high strength, and versatile all purpose brazing rod. 1/8" dia.....P/N 03-27570 ..... \$21.25/lb.

## MAINTENANCE

**UTP 612** – An all position mild steel coated electrode for arc welding. Operates on AC or DC current and can be welded by even the most inexperienced welder. 72,000 psi tensile strength, moisture resistant and conveniently packaged in 10 lb containers.

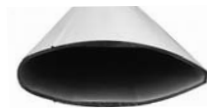
3/32" dia.....P/N 03-27575 .....\$14.60/lb.

1/16" dia.....P/N 03-27580 .....\$12.85/lb.



## EXTRUDED STREAMLINED STRUT MATERIAL

Wing strut material used on the EMG-6 electric motor glider. .006" centerline groove extruded into the profile on either side for use as a drilling guide through the exact center of the 1 inch diameter pocket. The centerline groove also acts to eliminate laminar bubble formation. • Extruded Streamlined Strut Material • 6061/T6 Aluminum • Clear Anodized Finish • 2.80" Major axis dimension • 1.18" Minor axis dimension • Trailing edge radius 0.010" • Built-in .045" internal web. • Weight .49 pounds per ft • Designed to accept 1.00" diameter tube or fitting internally. • Sold in 12ft lengths (can be cut for shipping)  
 P/N 03-00238.....\$148.75



## STREAMLINE WING STRUT

Note: Sold and shipped in 10 ft pieces. Must ship truck freight. Supplier can cut for an additional charge to avoid truck freight fees. Note in special instructions at checkout length of cuts desired.

This Streamline Wing Strut is specifically molded for Ultralight Aircraft. It is extruded 6061 Aluminum wing strut and it already comes Clear Anodized. The inside profile allows a 1" square material to be inserted inside the profile to secure it. It also has a molded rib design into the profile that helps reduce drag. Length: 10'. Weight: 6 lbs.

P/N 06-02910.....\$88.95

## COPPER TUBING

O.D. (In.)	Wall Thickness	Part No.	Price/Ft.
1/8	.030	03-40900	\$1.95
1/4	.030	03-41000	\$2.75
5/16	.032	03-41100	\$3.15
3/8	.032	03-41200	\$3.75
1/2	.032	03-41250	\$3.65

Seamless copper tubing for primer, fuel and oil pressure lines.  
**20% discount for full soft coils of 50 ft. of Copper Tubing.**



## COPPER BUS BAR

.125 X 1/2" wide  
 P/N 03-40890.....\$3.80/ft.

## LEAD SHEET

Lead sheet per specification QQ-L-201, Grade B. 1/8" thick.  
 Wt. 8 lbs./sq.ft.

P/N 03-31500..... \$74.75/ft.

Half Sheet (24" x 36", 48 Lbs.)  
 P/N 03-31520..... \$447.95

Full Sheet (36" x 48", 96 Lbs.)  
 P/N 03-31540..... \$897.00