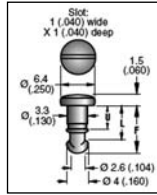


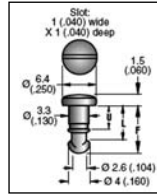
# SOUTHCO FASTENERS

## FLUSH SLOTTED



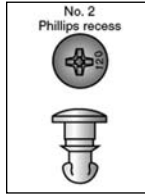
Flush Head #82 Dacrotized Slotted	
Part No.	Price
82-14-120-16	\$1.19
82-14-180-20	\$0.67
Flush Head #82 Stnls Phillips	
Part No.	Price
82-28-100-16	\$0.86
82-28-120-16	\$0.75
82-28-140-16	\$0.73
82-28-160-16	\$1.40
82-28-180-16	\$0.73
82-28-200-16	\$0.76
82-28-220-16	\$0.84
82-28-240-16	\$0.84
82-28-260-16	\$0.81
82-28-280-16	\$1.33
82-28-300-16	\$0.80
82-28-320-16	\$0.83
82-28-340-16	\$0.83

## OVAL SLOTTED



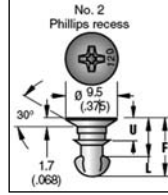
Oval Head #82 Stnls Slotted	
Part No.	Price
82-11-100-20	\$1.22
82-11-120-20	\$1.04
82-11-140-20	\$1.95
82-11-160-20	\$1.96
82-11-180-20	\$1.95
82-11-200-20	\$1.95
82-11-220-20	\$1.22
82-11-240-20	\$1.97
82-11-280-20	\$0.95
Oval Head #82 Dacrotized Slotted	
Part No.	Price
82-11-100-16	\$0.92
82-11-120-16	\$1.38
82-11-140-16	\$1.39
82-11-160-16	\$1.38
82-11-180-16	\$1.47
82-11-200-16	\$1.35
82-11-220-16	\$1.53
82-11-240-16	\$1.38
82-11-260-16	\$1.38

## SOUTHCO STUDS OVAL PHILLIPS



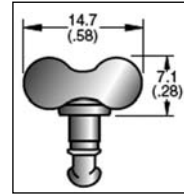
Oval Head #82 Stnls Phillips	
Part No.	Price
82-19-120-20	\$1.10
82-19-140-20	\$1.05
82-19-160-20	\$0.89
82-19-180-20	\$1.10
82-19-200-20	\$1.06
82-19-220-20	\$1.08
Oval Head #85 Stnls Slotted	
Part No.	Price
85-11-100-20	\$0.63
85-11-140-20	\$1.12
85-11-160-20	\$1.29
85-11-180-20	\$2.08
85-11-200-20	\$1.12
85-11-220-20	\$1.13
85-11-240-20	\$1.25
85-11-260-20	\$1.30
85-11-280-20	\$1.29
85-11-300-20	\$2.10

## FLUSH PHILLIPS



Wing Head #85 Zinc plate, chromate plus sealer	
Part No.	Price
85-12-140-16	\$1.16
85-12-160-16	\$1.07
85-12-180-16	\$1.05
85-12-200-16	\$0.99
85-12-220-16	\$1.64
85-12-240-16	\$1.07
85-12-260-16	\$1.13
85-12-280-16	\$1.06
85-12-300-16	\$0.93
85-12-320-16	\$0.93
85-12-340-16	\$0.93
85-12-360-16	\$1.03
85-12-380-16	\$0.93
85-12-400-16	\$0.93

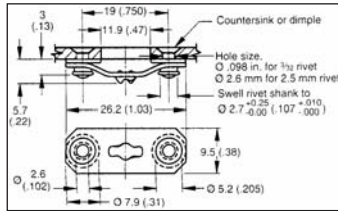
## WING HEAD



Wing Head #82 Dacrotized	
Part No.	Price
82-12-100-16	\$1.76
82-12-120-16	\$1.69
82-12-140-16	\$1.70
82-12-160-16	\$1.00
82-12-180-16	\$1.66
82-12-200-16	\$0.86
82-12-220-16	\$1.70
82-12-240-16	\$1.70
82-12-300-16	\$1.66
82-12-340-16	\$0.97

HA

## #82 SOUTHCO RECEPTACLES



**FLOATING FOR RIVETING W/O BASE** - This space saving stainless steel receptacle offers optimum weight savings by eliminating base.

P/N 82-35-295-20 ..... \$1.08/ea

**FLOATING FOR RIVETING W/ BASE** - Full-floating dacrotized steel receptacle is mounted to inside panel with two 3/32" rivets. Compact dimensions save space and weight.

P/N 82-35-302-15 ..... \$0.55/ea  
**FIXED FOR WELDING WITH BASE** - Exactly the same as the receptacle with base above except this receptacle features two welding studs for installation by welding rather than rivets.

P/N 82-35-303-15 ..... \$2.15/ea

**CLIP-ON RECEPTACLES** - These versatile receptacles will fit material thickness from .020 to .190 by simply slipping over the hole and clipping in place. Easily removed as well, these receptacles do not require welding or riveting.

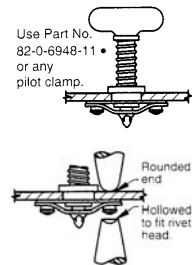
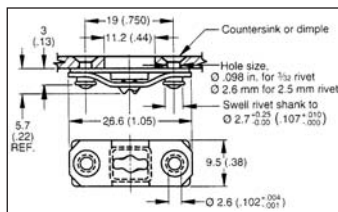
P/N 82-47-113-200 (Stainless Steel) ..... \$1.33/ea

P/N 82-47-113-150 (Steel) ..... \$0.32/ea

**RUBBER VIBRATION ISOLATION RECEPTACLES**

- Use these receptacles where it is necessary to isolate vibration between panels.

P/N 82-35-306-10 ..... \$9.85



## #85 RECEPTACLES

**RIVET TYPE** - Receptacle Spring: 1064 steel, dacrotized  
 Base: 1010 steel, dacrotized. P/N 85-35-295-15 ..... \$1.30

**RECEPTACLE SPRING**: 17-7 PH, stainless steel, passivated  
**BASE**: 305 stainless steel, passivated. P/N 85-35-295-20 ..... \$3.60/ea

**WELD TYPE** - Receptacle Spring: 1064 steel, dacrotized  
 Base: 1010 steel, dacrotized Rivet: steel, copper-plated.  
 P/N 85-35-296-15 ..... \$2.75/ea

**CLIP-ON TYPE** - 17-7 PH stainless steel, passivated.  
 P/N 85-47-101-20 ..... \$1.55/ea

## DETERMINING SOUTHCO STUD PART NO.

Stud Length	Selection Chart	Material Thickness	Thickness Size
.090 - .109	100		
.110 - .129	120		
.130 - .149	140		
.150 - .169	160		
.170 - .189	180		
.190 - .209	200		
.210 - .229	220		
.230 - .249	240		
.250 - .269	260		
.270 - .289	280		

Southco studs are commonly used to secure Cessna cowlings, particularly on models 150, 172, and 177. We stock the popular Southco No. 82 1/4 turn fastener studs, receptacles, and accessories.

### TO DETERMINE PART NO.

Select Stud part number using chart above. Example:

**82 - 14 - 220 - 16**

Southco Fastener Number: 82  
 Head Type (Slotted): 14  
 Stud Length: 220  
 Material Type (Dacrotized): 16

**SOUTHCO SEALING WASHER** - This black synthetic washer is used under head of Southco Studs. P/N 82-43-201-38 ..... \$0.22/ea

**SOUTHCO EJECTOR SPRING** - This stainless steel spring enables the stud head to stand away from the panel when the unit is not fastened. When using the ejector spring, add two grip lengths to stud length to allow for spring and wear washer. P/N 43-13-1-24 ..... \$0.16/ea

**SOUTHCO WEAR WASHER** - A plastic washer to reduce wear around the Southco stud. When using wear washer add one grip length to stud length selection. P/N 82-46-101-39 ..... \$0.18/ea

**SOUTHCO SPLIT RING RETAINER** - Can be installed by hand or tool, and is fabricated from stainless steel. P/N 82-32-101-20 ..... \$0.09/ea

**SOUTHCO SPLIT RING RETAINER TOOL** - Designed to install Southco split ring retainers. P/N 82-0-7596-11 ..... \$27.65/ea

**SOUTHCO PUSH-ON RETAINER** - designed for installation using the retainer tool below. Stainless..... P/N 82-32-201-20 ..... \$0.10/ea  
 Plastic..... P/N 82-32-301-12 ..... \$0.09/ea

**SOUTHCO PUSH-ON RETAINER TOOL** - An easy-to-use tool quickly installs Southco push-on retainers. P/N 82-0-22542-11 ..... \$19.90/ea

**SOUTHCO PUSH-ON RETAINER TOOL** - An easy-to-use tool quickly installs Southco 85 Series push-on retainers. P/N 85-0-22543-11 ..... \$31.50

## #85 RETAINERS

**Split Ring** Hand or tool installation. Stainless steel.  
 P/N 85-34-101-20 ..... \$0.13/ea

**Push-On Tool** installation only. 302 Stainless Steel, Passivated  
 P/N 85-34-201-20 ..... \$0.14/ea

Nylon Black .P/N 85-34-301-12 ..... \$0.12/ea

## #85 THERMOPLASTIC (CUPPED NYLON) WEAR WASHER

Natural color. Order stud one size longer than size you would use without washer. Adjustment Formula: Add 0.51/.020 to your total material thickness.  
 P/N 85-46-101-39 ..... \$0.17/ea