

Calibration table for MD11-3,-4, -6, -6L

SCALE READING	BULB RESISTANCE	TOL(°C)
-30°C	80.56 Ω	+4.0
-20°C	83.77 Ω	+3.0
-10°C	87.04 Ω	+3.0
0°C	90.38 Ω	+2.0
+10°C	93.80 Ω	+3.0
+20°C	97.31 Ω	+3.0
+30°C	100.91 Ω	+4.0

Calibration table for MD11-5,-5L,-8,-9

SCALE READING	BULB RESISTANCE	TOL(°C)
-30°C	77.40 Ω	±2.0
-20°C	81.73 Ω	±1.75
-10°C	86.05 Ω	±1.5
0°C	90.38 Ω	±1.0
+10°C	94.71 Ω	±1.5
+20°C	99.03 Ω	±1.75
+30°C	103.37 Ω	±2.0

Revisions				
ECO	Rev.	Description	Date	Approved
	A	-3,-4 was 7017411. -6,-6L was 7017429. -5,-5L & -8, -9 were separate dwgs.	7/30/99	JBR
	B	Rotate nameplate 90° as shown	8/24/99	JBR
2129	C	-8 and -9 config dial arc was -20° to +1°.	1/15/01	JBR/ScH
2955	D	S1311-3 was S-1311-3 & S1311-4 was S-1311-4 in note 4.	12/3/02	NHK/ScH
4876	E	Reformat calibration tables. Cust. P/N for MD11-8,-9 Note 5 was "C604-6/-3". Add Note 5 for MD11-3,-4 and MD11-5,-5L.	6/21/07	BAW/MCH
4932	F	Correct typo in calibration tables: -10° was entered twice, nameplate on -3, -4 was on top, change -6, -6L from RH to LH calibration table, re-organize notes.	11/1/07	ScH/MKN

NOTE:

- Case in accordance with MS 33638 (2 Inch)
- Dial graduations & pointer are matte white, Bezel is dull black.
- Light Tray (5V, 14V or 28V) per customer spec.
 - 5 Volt - P/N 6018634-2
 - 14 Volt - P/N 6015010-2
 - 28 Volt - P/N 6015358-2

MD11-8, -9:

- For use with MCI B-5 Carb Air Temp bulb.
- Range mark: 0.06 wide yellow arc: -19° to +3°C OVER white graduations.
- MD11-8 CALIBRATION VOLTAGE 13.70.
MD11-9 CALIBRATION VOLTAGE 27.4.
- MD11-8 CUST. P/N C604-7 (ROBINSON).
MD11-9 CUST. P/N C604-9 (ROBINSON).
- MD11-8 Sender - Green Wire
+14VDC - Red Wire
-VDC - Black Wire
MD11-9 Sender - Green Wire
+28VDC - Red Wire
-VDC - Black Wire

MD11-5, -5L:

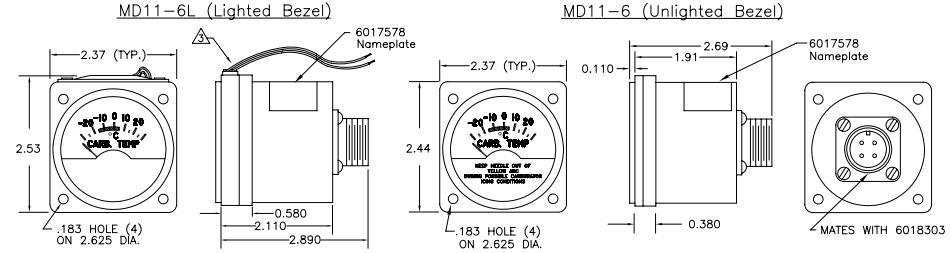
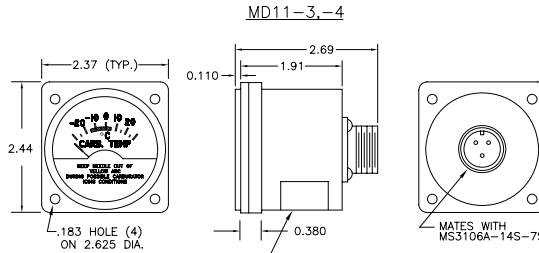
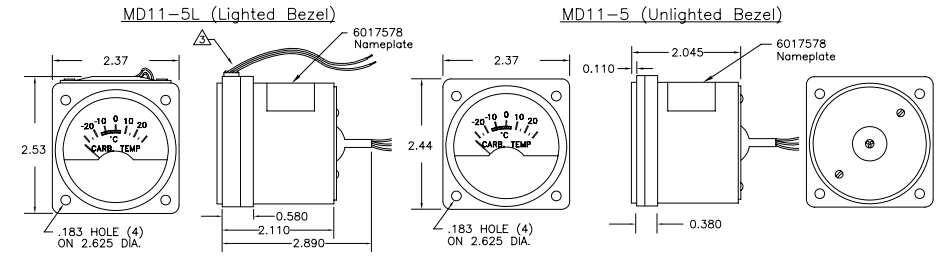
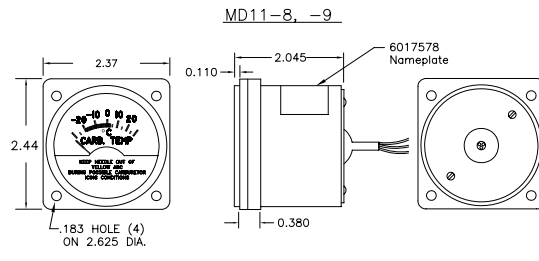
- For use with MCI B-5 Carb Air Temp bulb.
- Range mark: 0.06 wide yellow arc: -15° to +5°C UNDER white graduations.
- Calibration voltage 13.70.
- MD11-5 Cust. P/N A604-1 (Robinson).
- Sender - Green Wire
+14VDC - Red Wire
-VDC - Black Wire

MD11-6, -6L:

- For use with Richter or MCI B-5 Carb Air Temp bulb.
- Range mark: 0.06 wide yellow arc: -15° to +5°C UNDER white graduations.
- Dual voltage: 14 or 28 VDC.

MD11-3, -4:

- For use with 0550209-1 Carb Air Temp bulb (Richter or MCI B-5)
- Dial & pointer conform to CES-1206,
- Range mark: 0.06 wide yellow arc: -15° TO +5°C UNDER white graduations.
- MD11-3 is CES type S1311-3 (12vdc).
MD11-4 is CES type S1311-4 (24vdc).
- FAA-PMA approved. (PQ3738CE, Supplement #1)



WIRING DIAGRAM:

- A- +VOLTAGE INPUT
- B- B5 PROBE
- C- GROUND

WIRING DIAGRAM:

- A- +28VDC
- B- B5 PROBE
- C- PWR/PROBE GND
- D- +14VDC

UNLESS OTHERWISE SPECIFIED, ALL DIMENSIONS ARE IN INCHES. TOLERANCE: FRACTIONAL: ±1/64 .XX=±0.015 .XXX=±0.005 .XXXX=±0.002 ANGULAR: ±0.5° CONCENTRICITY: 0.005 TIR BREAK ALL SHARP EDGES THREADS PER MIL-S-7742	DRAWN: N. Kow 7/22/99	This document discloses proprietary information of Mid-Continent Instrument Co. It may be reproduced or disclosed only with written permission of Mid-Continent Instrument Co. and is not to be used in any way detrimental to the interests of Mid-Continent Instrument Co.	MID-CONTINENT INSTRUMENTS
	APPROVED: JBR 7/30/99		
SCALE: None		DO NOT SCALE THIS DRAWING	
			SHEET 1 of 1