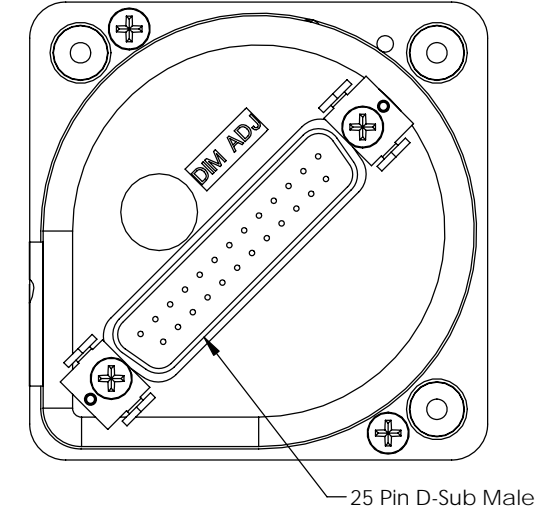
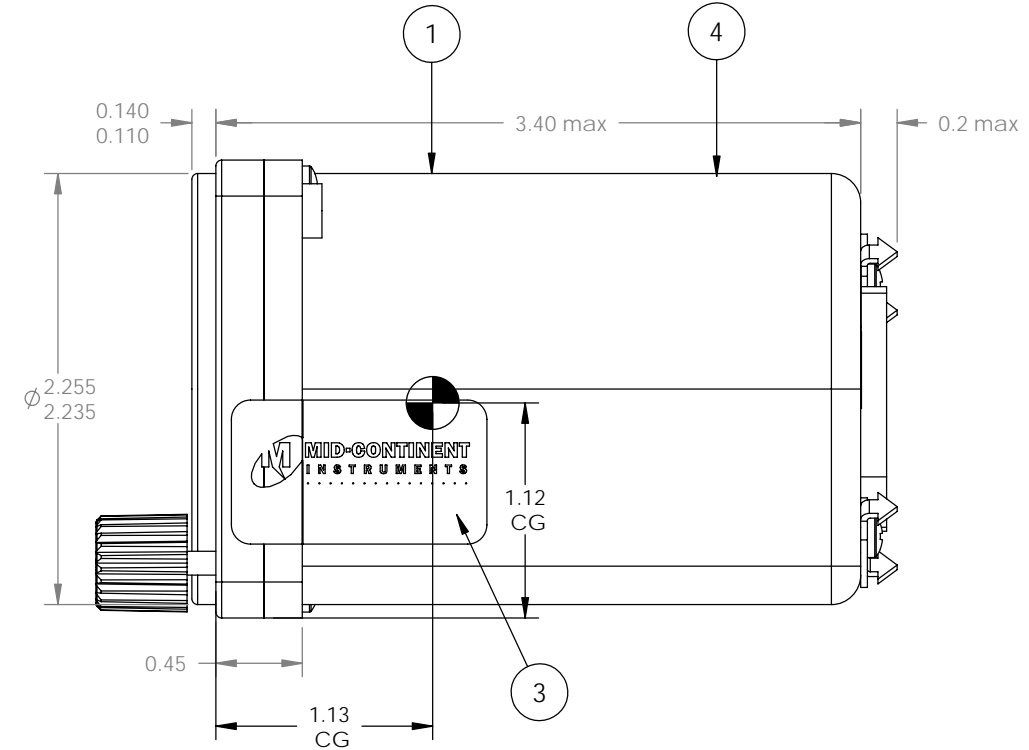
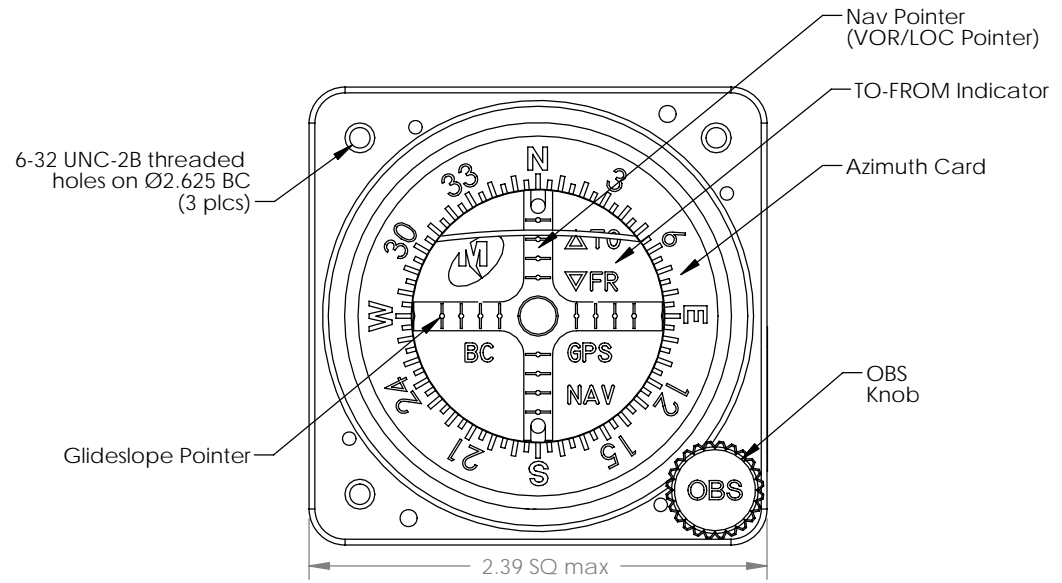
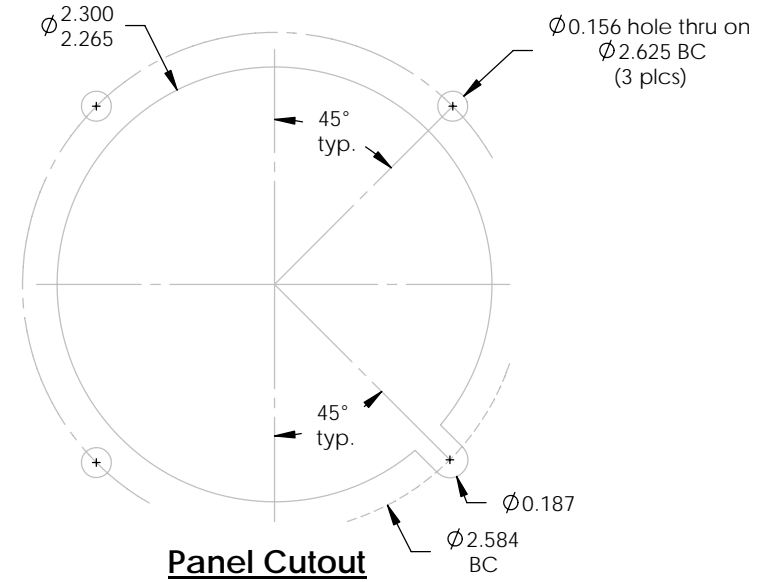


Configuration		
Dash #	Glideslope	Assy, MD222-5XX
-506	YES	9016244-2

Revision				
ECO	Rev.	Description	Date	Approved
		Model number was previously MD200-4XX. See MD200-5XX drawing for revision history.		
4840	B	Update DO 160 Environmental Category.	5/17/07	MCH/BAW
5599	C	Input Range was 0V to 5V.	5/10/11	MKN/JDS



Specifications			
<b>Power Input</b>	10 to 32 VDC		
<b>Lighting</b>	Internal White LED. Lighting control voltage is selectable for 5V, 14V or 28V DC.		
<b>Weight</b>	0.6 lbs.		
<b>Qualification Tests</b>	FAA TSO-C34e, C36e, and C40c RTCA DO-192,-195,-196,-160E Environmental Category F1S2AER(BB1G)XXXXXXZAAZ[ZC][WR]M[A3C3X]XXAX		
<b>Temperature</b>	-20°C to +70°C Operating		
<b>Humidity</b>	95% Non-Condensing		
<b>Altitude</b>	0 to +55,000 Ft.		
<b>Operational Shock</b>	Rigid Mounting, 6G operational, 20 G crash safety.		
<b>Cover Glass</b>	HEA (Anti-Reflective) Coated		
<b>Connector</b>	MD25M3S0V50		
<b>Mating Connector</b>	MD25F20JVL0 or equivalent		
<b>Color</b>	Index Marks and Pointers: White	Bezel: Black	
	Dial Background: Black	GPS Annunciation: Green	
	Glideslope and Navigational Pointers: White	MCI Logo: White	
	TO/FR, NAV and VLOC Annunciation: White		
<b>Input Range</b>	Common mode voltage range is 1V to 5V for deviation inputs.		
<b>VOR/GS Deviation</b>	Std. Temp. and Press.	Max Operating Temp Range	
	Input Impedance	1K ohms ± 10%	1K ohms ± 25%
<b>To/From Indicator</b>	Deflection Sensitivity	150 mV ± 10%	150 mV ± 25%
	Input Impedance	200 ohms ± 10%	200 ohms ± 25%
<b>OBS Resolver</b>	Indicator Illuminated	±40mV ± 15%	±40mV ± 25%
	Zeroed at	300°±1° ORZ	300°±2.5°
<b>VOR/GS Valid Signal</b>	Input Impedance	1K ohms ± 10%	1K ohms ± 25%
	Pointer In View	260 mV ± 10% max.	260 mV ± 25% max.
	Pointer Out of View	125 mV minimum	



Connector Pin Out			
Pin #		Pin #	
1	Resolver H	14	-NAV Annunciation
2	Resolver C	15	-GPS Annunciation
3	Resolver D	16	+TO
4	Resolver G	17	+From
5	Resolver E	18	+GS Warning
6	Resolver F	19	-GS Warning
7	Reserved	20	+NAV Warning
8	-BC Annunciation	21	-NAV Warning
9	+5 VDC Lighting	22	+Left
10	+14 VDC Lighting	23	+Right
11	+28 VDC Lighting	24	+Down
12	+Power	25	+Up
13	-Power Return		

- Notes:**  
 MD222-5XX Course Deviation Indicator (CDI) is a 2-inch dual pointer indicator with the following indications:  
 1) Rectilinear VOR/LOC deviation pointer: indicates the amount of deviation and direction from a selected VOR course or localizer path.  
 2) TO/FROM Indicator: indicates whether the bearing of the selected station is to or from the aircraft when flying a selected course.  
 3) Rectilinear glideslope deviation pointer: displays deviation from the glide path.  
 4) OBS knob: rotates azimuth card to the desired bearing.

UNLESS OTHERWISE SPECIFIED, ALL DIMENSIONS ARE IN INCHES. TOLERANCE: FRACTIONAL=±1/64 .XX=±0.015 .XXX=±0.005 .XXXX=±0.002 ANGULAR=±0.5° CONCENTRICITY: 0.005 TIR BREAK ALL SHARP EDGES THREADS PER MIL-S-7742	DRAWN: M. Hawks 3/6/2006	This document discloses proprietary information of Mid-Continent Instrument Co. It may be reproduced or disclosed only with written permission of Mid-Continent Instrument Co. and is not to be used in any way detrimental to the interests of Mid-Continent Instrument Co.	
	APPROVED: J. Reed 8/18/06		

Item	Qty	Part Number	Description
1	1	See config.	Assy, MD222-5XX
2	1	7014517	Connector Kit
3	1	6018956	Decal, Warranty
4	1	9016271	Nameplate