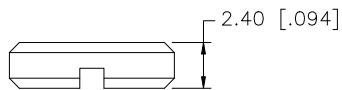
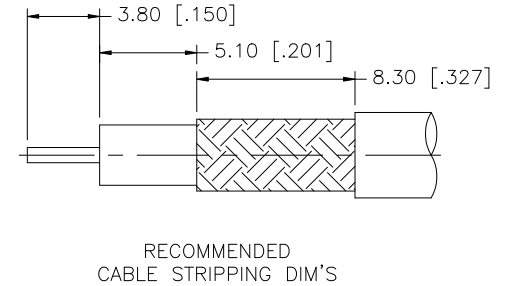
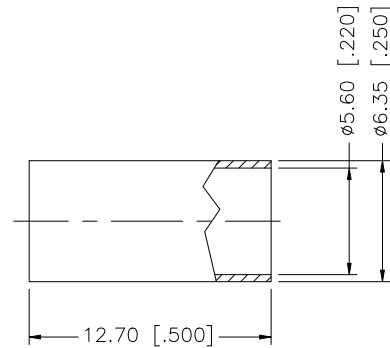
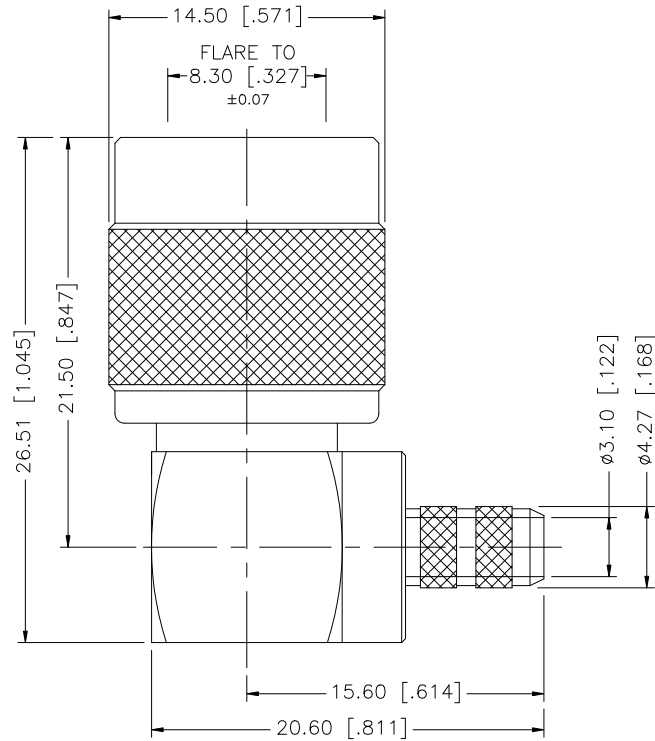


REV.	DATE	ECR NO.	DESCRIPTION
A	05/29/03	-	UPDATE DRAWING FORMAT.
B	01/04/09	-	ADD HEX CRIMP NOTES.



NOTE:

1. CRIMPED FERRULE HEX CRIMP SIZE .213" [5.41].
2. CONTACT PIN TO SOLDER.

				UNLESS OTHERWISE SPECIFIED DIMENSIONS ARE IN MILLIMETERS. DIMENSIONS IN [] ARE IN INCHES AND FOR CUSTOMER REFERENCE ONLY.	APPROVALS	DATE	Amphenol Connex						
8					DRAWN	GRS				01/04/09	PART DESCRIPTION TNC R/A CRIMP PLUG (FOR RG-55/U, 142A/U, 223/U, 400/U)		
7					CHECKED			PART NO. 122430					
6					ISSUED						DWG. NO. 122430.DWG		
5	NUT	BRASS	NICKEL	1	SHEET	1 OF 1		REV.	B	SIZE			
4	FERRULE	COPPER	NICKEL	1	CAD FILE								
3	CONTACT PIN	BRASS	GOLD	1	C:/122/122430.DWG								
2	INSULATOR	PTFE	NATURAL	1	DO NOT SCALE DRAWING								
1	BODY	BRASS	NICKEL	1									
				UNLESS OTHERWISE SPECIFIED TOLERANCES FOR MILLIMETERS ARE: 0.5 - 8mm ± 0.20mm 8 - 30mm ± 0.40mm 30 - 120mm ± 0.50mm UNLESS OTHERWISE SPECIFIED TOLERANCES FOR INCHES ARE: .020 - .315 = ± 0.007" .315 - 1.180 = ± 0.015" 1.180 - 4.724 = ± 0.020"									