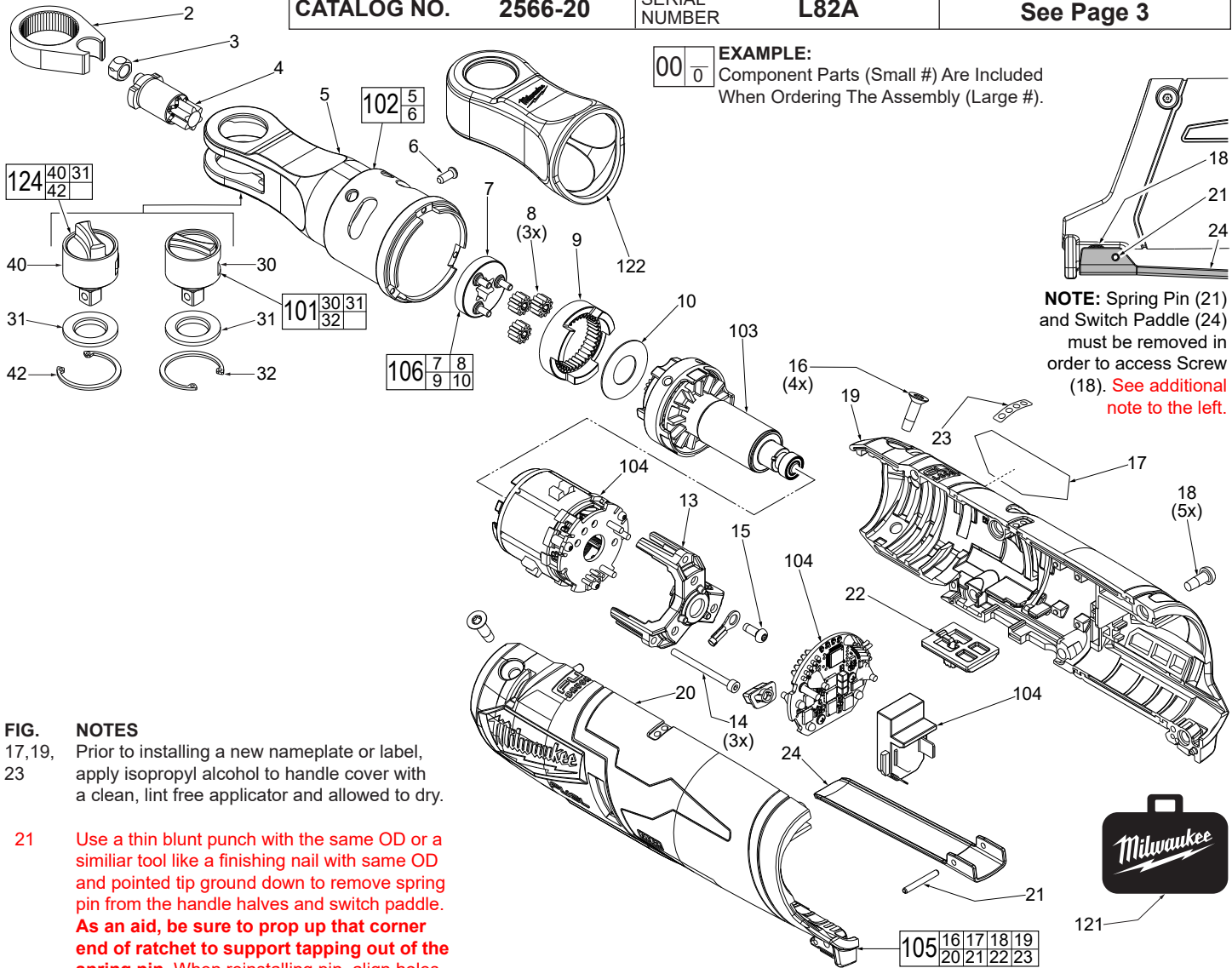




# SERVICE PARTS LIST

**BULLETIN NO.**  
**54-47-2560**

SPECIFY CATALOG NO. AND SERIAL NO. WHEN ORDERING PARTS		REVISED BULLETIN	DATE
<b>M12™ FUEL 1/4" HIGH SPEED RATCHET</b>			Oct. 2020
CATALOG NO.	<b>2566-20</b>	SERIAL NUMBER	<b>L82A</b>
		WIRING INSTRUCTION <b>See Page 3</b>	



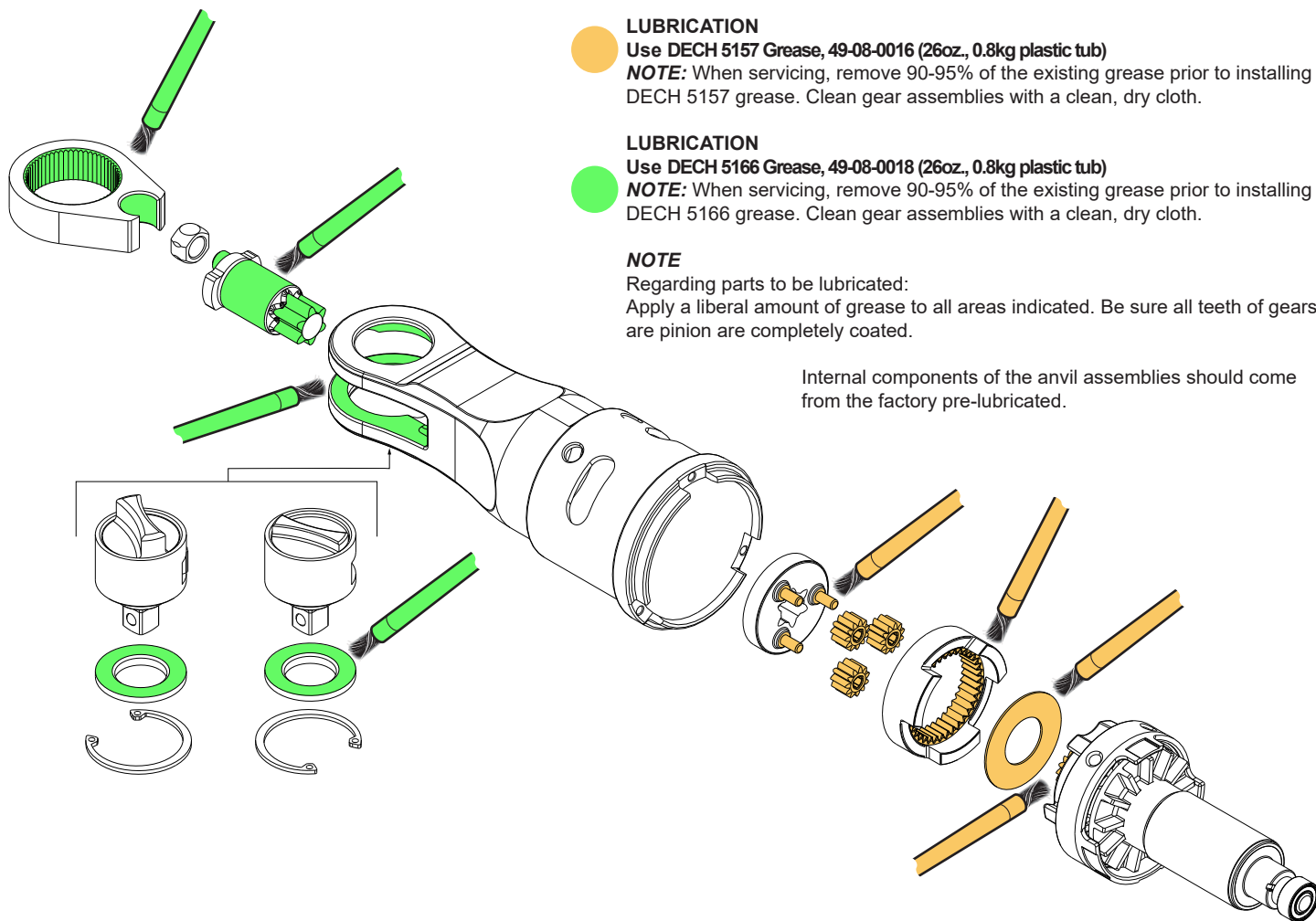
**FIG. 17, 19, 23** **NOTES**  
Prior to installing a new nameplate or label, apply isopropyl alcohol to handle cover with a clean, lint free applicator and allowed to dry.

**21** Use a thin blunt punch with the same OD or a similar tool like a finishing nail with same OD and pointed tip ground down to remove spring pin from the handle halves and switch paddle. **As an aid, be sure to prop up that corner end of ratchet to support tapping out of the spring pin.** When reinstalling pin, align holes and carefully press or tap the pin in place.

**NOTE:** Spring Pin (21) and Switch Paddle (24) must be removed in order to access Screw (18). See additional note to the left.

FIG.	PART NO.	DESCRIPTION OF PART	NO. REQ.
2	45-98-0020	Yoke	(1)
3	42-40-0017	Bushing	(1)
4	36-17-0111	Crankshaft	(1)
5	-----	Yoke Housing with Needle Bearings	(1)
6	44-60-0890	Drive Pin	(1)
7	-----	Carrier	(1)
8	-----	Planetary Gears	(3)
9	-----	Ring Gear	(1)
10	-----	Washer	(1)
13	44-66-1006	Motor Plate	(1)
14	05-84-0205	M2.5 x 31mm Skt. Hd. Hex Drive Screw	(3)
15	06-82-2310	M3 x 8mm Pan Hd. Taptite T-10 Screw	(1)
16	05-81-0594	M4 x 14mm Flat Hd. ST T-20 Screw	(4)
17	12-20-2513	Service Nameplate	(1)
18	05-71-0017	M4 x 10mm Pan Hd. ST T-20 Screw	(5)
19	-----	Right Housing Halve - Cover	(1)
20	-----	Left Housing Halve - Support	(1)
21	44-60-0575	Spring Pin	(1)
22	42-42-0119	Switch Lock-Out	(1)
23	10-20-4419	Fuel Gauge Label	(1)
24	44-10-0740	Switch Paddle	(1)
30	-----	1/4" Anvil w/ Standard Shift Knob	(1)
31	-----	Friction Plate	(1)

FIG.	PART NO.	DESCRIPTION OF PART	NO. REQ.
32	-----	Retaining Ring	(1)
40	-----	1/4" Anvil w/ Tall Shift Knob (Optional)	(1)
42	-----	Retaining Ring	(1)
101	42-06-0139	1/4" Anvil Service Kit-Standard	(1)
102	14-46-2560	Yoke Housing Service Kit	(1)
103	16-01-2560	Rotor Service Assembly	(1)
104	14-20-2560	Electronics Service Assembly	(1)
105	31-44-2560	Housing Service Kit	(1)
106	28-23-2500	Gear Set Service Kit	(1)
121	42-55-2561	Contractor Bag (Optional, Accessory)	(1)
122	49-16-2567	Rubber Boot (Optional, Accessory)	(1)
124	49-06-2566	1/4" Anvil Service Kit-Tall (Optional, Accy.)	(1)



**SCREW TORQUE SPECIFICATIONS**

FIG.	PART NO.	WHERE USED	SEAT TORQUE	
			(KG/CM)	(IN/LBS)
14	05-84-0205	Motor Plate	5-7	4-6
15	06-82-2310	HV Terminal/Motor Plate	12-14	10-12
16	05-81-0594	Housing Cover	14-16	12-14
18	05-71-0017	Housing Cover/Support	10-12	8-10

