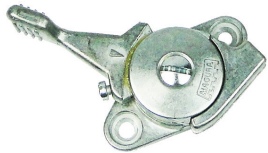


AP



CPS THROTTLE LEVER

The perfect answer to any throttle and choke operation. The compact cast aluminum control allows easy access for standard casing and 1/16" control wire. Eliminates the need for expensive and bulky quadrants that require special mounting and end fittings. Block is countersunk to accept throttle casing as shown. Inner wire wraps smoothly around wheel providing a full 2" travel (Bing Carbs need 1 1/2" travel) in less than 1/2 revolution of the handle. Set screw shown firmly anchors wire. Back up swage makes for a fail-safe and completely variable length and design. Precision tension adjusting makes for a throttle that positively stays where you set it. Mounts to any 3/16" or 6mm fasteners. Bolt centers are 1 7/8" Handle measures 3" long. A precision made control manufactured in Germany..... P/N 7109..... **\$16.50**



COMPACT THROTTLE LEVER

This compact aluminum control allows easy access for standard casing and 1/16" control wire. Eliminates the need for expensive and bulky quadrants that require special mounting and end fittings. Block is countersunk to accept throttle casing as shown. Inner wire wraps smoothly around wheel providing a full 2" travel (Bing Carbs need 1 1/2" travel) in less than 1/2 revolution of the handle. Set screw shown firmly anchors wire. Back up swage makes for a fail-safe and completely variable length and design. Short handle controls precision tension adjuster that makes for a throttle that positively stays where you set it. Mounts to any 3/16" or 6mm fasteners. Bolt centers are 1 7/8" Handle measures 2" long. A precision made control manufactured in Germany. P/N 7111..... **\$14.95**

DUAL HANDLE DUAL CHOKE CONTROL



This lightweight aluminum control allows for precise control over both Carb chokes in a single compact unit. Uses precision gear driven movement that accepts #7403 or #7405 casing and 1/16" control wire. Uses #7417 solder swage to mate with internal gear slug. Center screw allows for precise tension control of levers. Ideal for an operators that knows how to diagnose an engine problem with choke controls. Provides 3/4" travel range. Not designed for throttles. Mounts with any 3/16" or 6mm fasteners. Mounts to any flat vertical surface. Bolt centers are 1 7/8". Handle measures 2-1/2" long. A precision made control manufactured in Germany. P/N 7115..... **\$34.95**

SHORT JUNCTION BLOCK



for dual carb linkage on any Rotax engine. Three gang outlet can be used dual carbs or with three way oil injection and dual carbs. Converts a single throttle line into as many as three lines. Measures 5/8" x 3 1/2" long. Provides 2" of slide travel P/N 7703..... **\$13.85**

LONG JUNCTION BLOCK



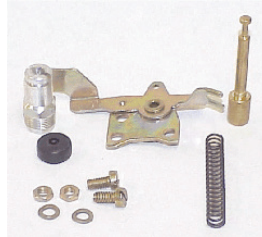
Same as above with new long reach. Same three gang design with a full 2 3/4" slide travel. Assures full throttle opening is not limited to slide travel. Custom mounting bracket is available for mounting to any flat surface. Measures 5/8" x 4 1/4" long. P/N 7704..... **\$14.85**

CABLE LUBER SYSTEM



Don't take chances with sticking throttle, brake, and choke cables. Prevent cable freezing and extend cable life by lubricating cable with the "Cable Luber" system. Special precision machined lube block allows ease of lubrication between cable and housing without removing the cable. Just attach the Cable Luber to either end of the cable and insert nozzle from aerosol can. Specially designed seals in block force lube down inside cable housing. A must for the serious mechanic. Cable Life Aerosol lubricates and rustproofs moving parts even at temperatures far below -50 degrees.

Luber Block..... P/N 7431..... **\$8.95**
Complete Kit Part..... P/N 7435..... **\$22.75**



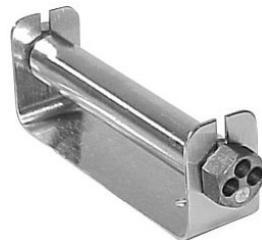
BING LEVER CHOKE KIT

Includes all parts to convert cable choke Carbs to manual lever actuation. Includes all parts shown. Carb must have choke provision..... P/N 7658..... **\$51.90**



BING CARB CABLE CHOKE KIT W/ 8' CABLE

Includes all parts shown above plus 8' Cable Housing and inner wire with #7417 solder swage installed on one end. Ideal for single Carb applications. Does not include actuator handle. Order separately. P/N 995-660 **\$85.44**



LONG JUNCTION BLOCK MOUNTING BRACKET

Lightweight Steel Bracket is ideal for mounting a single #7704 Long Junction Block to any flat surface. Firmly mounting junction block stabilizes linkage for more precise operation. Cables slip through the specially cut slots for easy access. End caps pass through bracket holes and thread into center barrel. An inexpensive and clean answer to throttle line tangle. Stamped from chromoly steel and burnished for a bright finish. Measures 3 3/4" between ears. P/N 7657..... **\$8.50**

HOOKS & CARABINERS



Plated Formed Steel Spring Loaded Hooks SS Rigid Eye Snaps

- Part #: B249S-1
- Size Eye: 5/8"
- Length Overall: 2 3/4"
- Snap Opening: 3/8" P/N 15-06048 **\$4.05**



Formed Stainless Steel Spring Hooks

Part #	B2450-5	B2450-6	B2450-7
Size Eye	5/16"	3/8"	7/16"
Length Overall	3 1/8"	4"	4 3/4"
Snap Opening	3/8"	1/2"	5/8"
Tensile Strength lbs.	1200	1700	2125
Price	\$3.75	\$6.50	\$9.75