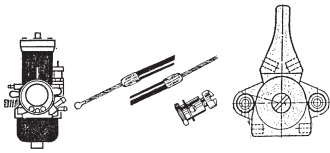
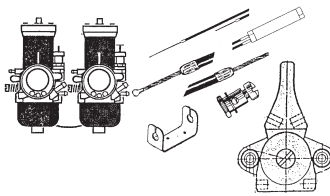


CHOKE CABLE SYSTEMS



Being able to apply choke from the cockpit is an important tool used to diagnose engine problems. (See Part #10 "Tuning the Bing Carburetor" located in the rear of this Catalog.) In an effort to accommodate most any application our choke kits can extend to a full 10' and can be shortened to any length quickly and easily. Our dual direction control lever #7111 provides plenty of travel and makes for easy installation because it mounts to any flat surface and accepts a housing coming from either direction. Just trim outer housing to desired length, thread inner wire through handle, tighten locking screw and cut off excess wire. Available for single or dual Carbs to fit most any application. You can run both chokes from a single handle or activate both chokes separately for diagnostic purposes. Dual Carb systems use the standard junction block that can be mounted to any flat surface with the #7657 mounting brackets.

AP



SINGLE CARB CHOKE W/ #7111 CONTROL

Order #995-665 separately for Carburetor internal parts. Ideal for single choke actuation for diagnostic purposes. Order two for dual Carb dual switch applications.

7755.....10' Cable Housing w/ Switch P/N 15-04643 **\$24.75**

Kit includes the following:

Model #	Description	Part Number
7407	10' Inner wire w/#7417 swage on one end	15-05162
7403	Cable Throttle housing	15-05164
7413	Steel Ferrule End Cap	15-05301
7111	Dual Direction Control	15-08194
A2361	Wire Stop Swivel	06-01282
7415	1/16" Stop Swage	04-00899

DUAL CARB CHOKE

w/ Junction Block & #7111 Control
Runs both chokes from a single switch. Order #995-665 separately for Carburetor internal parts.

#7758 Kit includes the following:

7758.....10' Cable Housing w/ Switch & Slider P/N 15-04644 **\$58.50**

Kit includes the following:

Model #	Description	Part Number
7407	10' Inner wire w/#7417 swage on one end	15-05162
7403	Cable Throttle housing	15-05164
7413	Steel Ferrule End Cap	15-05301
7111	Dual Direction Control	15-08194
A2361	Wire Stop Swivel	06-01282
7415	1/16" Stop Swage	04-00899
7704	Junction Block	15-05450
7657	Mounting Bracket	15-05496
8000	12" Choke Cable with swage on both ends	15-06008
6000	8" Choke Cable with swage on both ends	15-06009

HIGH BACK MOLDED PLASTIC SEAT



These CPS seats are lightweight yet incredible strong. Contoured high back design gives excellent lower back support and rear head protection. The seats are made from double-walled, impact-absorbing plastic, so they can't rust. The seat color is molded in so it will not fade, peel, or scratch off. Internal molded openings on sides, top and bottom allow access for belt and

shoulder beats making for an added degree of safety. Molded flat 10" x 13" bottom has six metal treaded bosses for easy mounting to any flat surface or cross tube. Matching thick padded seat cover has reinforced openings for lap, shoulder, and crotch belts. Measures 32" High, 20" wide, 22" deep. Weight is 11 lbs. Order seat cover separately. Available in black only.

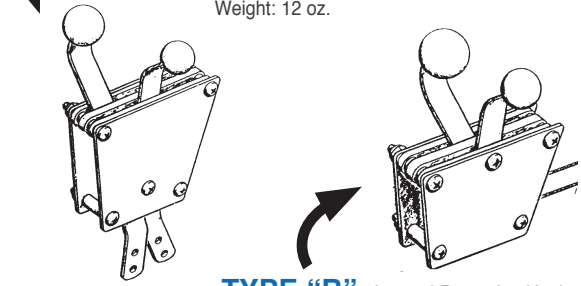
High back Molded Plastic Seat P/N 13603 **\$83.75**
Padded Seat Cover Only P/N 13605 **\$50.50**

CPS THROTTLE QUADRANTS

CPS offers a wide selection of throttle and choke quadrants to give you maximum flexibility to custom design your particular system. All plates and arms are constructed of light weight 0.125" 2024T-3 aluminum. Phonemic spacers provide for smooth operation and positive friction settings. Stop screws can easily be installed as shown for positive control of both forward and back stop positions. An optional Friction Control Knob (part #8129) can also be installed for easy in flight control of handles. Also available with optional U-shaped adapters that support cable end adjusters to support our standard cable and housing. Available in single handle or two handle units. Three handle units available on special request

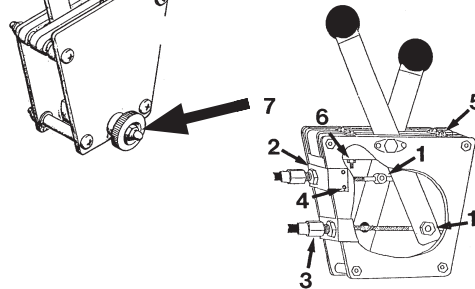
Contact CPS Customer Service at 1-800-247-9653.

TYPE "A" - External Reversing Hook-up
Can be used in tandem for dual control. Can also be used with back-up cable attached to spare hole.
Body size: 3.5" x 4"
Weight: 12 oz.



TYPE "B" - Internal Reversing Hook-up
Compact unit for restrictive placements
Body size: 3.5" x 4"
Weight: 10 oz.

TYPE "C" - Internal Reversing Hook-up
Can be used in tandem for dual control. Illustrated in cut-out below.
Body size: 3.5" x 4"
Weight: 12 oz.



Single Handle Type "A"	P/N 8103.....	\$78.80
Single Handle Type "B"	P/N 8105.....	\$64.95
Single Handle Type "C"	P/N 8107.....	\$78.85
Two Handle Type "A"	P/N 8109.....	\$66.80
Two Handle Type "B"	P/N 8111.....	\$64.75
Two Handle Type "C"	P/N 8113.....	\$78.80

Throttle Quadrant Accessories:

(2) Adapter U-Bracket - two handle two required... P/N 8119.....	\$14.65
(3) Cable Adjuster bulkhead..... P/N 8121.....	\$3.85
(4) Pop-riev (four required)..... P/N 8123.....	\$0.08
(5) screw 6-32 x 1 (four required)	P/N 4707 \$0.10
(6) 6-32 Locknut (four required)	P/N 4709..... \$0.03
(7) Friction Control Knob add to any unit..... P/N 8129.....	\$7.65
Two handle adapter kit (items 1-6)	P/N 8127..... \$47.75

includes two brackets, two bulkheads, and attaching hardware