

# 912 | 914 ENGINE

## CRANKSHAFT, PISTON, CYLINDER, SPRAG CLUTCH

Item No.	Part No	Description	Qty. Req.			Price
			912 UL	912 ULS	914 UL	
1	996-583	CRANKSHAFT SET	1g		1g	\$4,479.57
1	888-164	CRANKSHAFT SET	1g	1g	1g	\$4,956.00
2	834-122	FREE WHEEL GEAR 50 T	1	1	1	\$358.93
3	933-311	BEARING BUSHING	1	1	1	\$81.84
4	852-406	SPRAG CLUTCH HOUSING	1hj	1hj	1hj	\$298.65
5	958-856	SPRAG CLUTCH 51.70x68.377x13	1	1	1	\$312.00
6	845-425	CIRCLIP 70	1	1	1	\$7.60
7	842-574	HEX. NUT M34x1.5 LH	1	1	1	\$68.04
8-11	996-542	PISTON ASSEMBLY 79.50/79.51 MM	4a		4a	\$346.72
8-11	888-382	PISTON ASSEMBLY 84/84.01 MM		4b		\$356.78
9	215-400	OIL SCRAPER RING 79.5 MM	4		4	\$50.39
9	815-230	OIL SCRAPER RING 84 MM		4g		\$67.49
10	215-420	TAPERED COMPRESSION RING	4		4	\$31.17
10	815-280	TAPERED COMPRESSION RING		4e		\$47.51
11	215-590	RECTANGULAR RING 79.5/	4		4	\$59.44
11	815-251	RECTANGULAR RING 84/77x1.5		4e		\$82.75
12	916-420	PISTON PIN 20x12x56			4g	\$138.85
12	916-356	PISTON PIN 20x12x55.3	4g	4g	4g	\$81.25
13	845-106	MONOHOOK CIRCLIP 20	8	8	8	\$2.63
14	250-510	O-RING 87x2	4	4	4	\$26.49
15	913-222	CYLINDER	4cf		4cf	\$541.52
15	913-226	CYLINDER		4df		\$690.11
16	881-540	PISTON SET	1i		1i	\$1,458.48
17	881-542	PISTON SET		1i		\$1,531.36

- Items not illustrated

a red 79.50 mm, green 79.51 mm

b red 84 mm, green 84.01 mm

c A 79.50 - 79.512, B 79.513 - 79.524

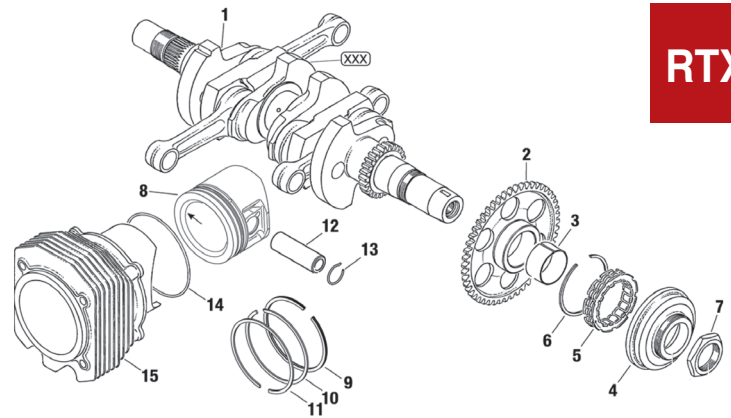
d A 84.00 - 84.012, B 84.012 - 84.024

e at 912 ULS the complete piston with rings has to be exchanged up to S/N 4,425.123

f with countersunk for O-ring 830415.

Introduced as per following engine S/N:

912 A: 4,410.393



**RTX**

912 F: 4,412.799

912 S: starting with serial production

912 UL: 4,403.679

912 ULS: starting with serial production

914 F: 4,420.207

914 UL: 4,417.868

g following Service Letter has to be noticed

SL-912-002 current issue

SL-914-002 current issue

h with expanded space of sprag clutch Introduced as per following engine S/N:

912 A: 4,410.807

912 F: 4,412.949

912 S: 4,923.671

912 UL: 4,409.089

912 ULS: 5,650.835

914 F: 4,420.805

914 UL: 6,772.727

i Balanced piston set: max. difference 3 g

j with drain holes

## BING CONSTANT SPEED DEPRESSION CARBURETOR - SINGLE PARTS

Item No.	Part No	Description	Qty. Req.			Price
			912 UL	912 ULS	914 UL	
AIRLIFTER	892-500	ASSEMBLY 1/3	1			\$1,129.23
	892-505	ASSEMBLY 2/4	1			\$965.00
AIRBOX	892-500	ASSEMBLY 1/3	(1)a			\$1,129.23
	892-505	ASSEMBLY 2/4	(1)a			\$965.00
AIRLIFTER OR AIRBOX	892-530	ASSEMBLY 1/3		1		\$1,129.23
	892-535	ASSEMBLY 2/4		1		\$1,129.23
AIRBOX	887-093	ASSEMBLY 1/3		1b		\$1,147.39
	887-098	ASSEMBLY 2/4		1c		\$1,233.00
	892-520	ASSEMBLY 1/3		1b		\$1,133.25
	892-525	ASSEMBLY 2/4		1c		\$1,690.53

a For airbox / See SB-912-044

b 64/32/398F/06, for cylinder 1/3; See SI-914-015 current issue

c 64/32/399F/06, for cylinder 2/4 incl. throttle potentiometer - see chapter 73-00-00/fig. 3; See SI-914-015 current issue

1 See Service Instruction SI-03-1998

2 Replace part no. 887-262 (64/32/394F/04) / 887-264 (64/32/394/08) / 888-802 (64/32/416/01) / 888-803 (64/32/416A/00)

3 Replace part no. 887-267 (64/32/395F/04) / 887-269 (64/32/395/08) / 888-807 (64/32/417/01) / 888-808 (64/32/417A/00)

4 Replace part no. 888-370 (64/32/409F/01) / 888-372 (64/32/412/00) / 888-373 (64/32/421/01) / 888374 (64/32/421A/00)

5 Replace part no. 888-375 (64/32/410F701) / 888-377 (64/32/411/00) / 888-378 (64/32/422/01) / 888-379 (64/32/422A700)

6 Replace part no. 887-092 (64/32/398F-06)

7 Replace part no. 887-097 (64/32/399F-07)

8 Replace part no. 887-094 (64/32/418A-00)

9 Replace part no. 887-099 (64/32/419A-00)

10 Depends on airbox version;

See SI-914-013 and SI-914-015 current issue

11 Depends on airbox version;

See SB-914-044 current issue

Version	912 UL/A/F		912 ULS/ULSFR/S		914 UL/F	
	59,6 kW (81 hp)		73.5 kW (100 hp)		84.5 kW (115 hp)	
Carburetor part no.	Carburetor part no.		Carburetor part no.		Carburetor part no.	
Location	1/3	2/4	1/3	2/4	1/3	2/4
Airbox part no. 667355 BING no. 64/32/416A-02 Main jet Needle position	892-500 HD 158 <sup>11)</sup> NP 3	892-505 HD 158 <sup>11)</sup> NP 3	892-530 <sup>4)</sup> HD 155 NP 3	892-535 <sup>5)</sup> HD 155 NP 3		
Airbox part no. 667355 BING no. 64/32/416A-02 Main jet Needle position	892-500 <sup>2)</sup> HD 158 NP 3	892-505 <sup>3)</sup> HD 158 NP 3				
Airbox part no. 867-753 BING no. 64/32/418/01 Main jet Needle position					887-093 <sup>6)</sup> HD 160 <sup>10)</sup> NP 2	887-098 <sup>7)</sup> HD 164 <sup>10)</sup> NP 2
Airbox part no. 667-162 BING no. 64/32/418/01 Main jet Needle position					887-093 HD 160 <sup>10)</sup> NP 2	887-098 HD 164 <sup>10)</sup> NP 2
Airbox part no. 667-167 BING no. 64/32/418A-05 Main jet Needle position					892-520 <sup>8)</sup> HD 156 <sup>10)</sup> NP 2	892-525 <sup>9)</sup> HD 158 <sup>10)</sup> NP 3
Airbox part no. 667-574 BING no. 64/32/418A-05 Main jet Needle position					892-520 HD 156 <sup>10)</sup> NP 2	892-525 HD 158 <sup>10)</sup> NP 3
Needle position	ND 2,72		ND 2,720		ND 2,72	
Diffusor	961-200		961-202		961-200	
Jet needle			961-215			
Idle jet			LD 35			
Cold start jet			SD 85 1)			
Float needle / viton tipped			961-708			
Idle mixture screw			LS 1,5			