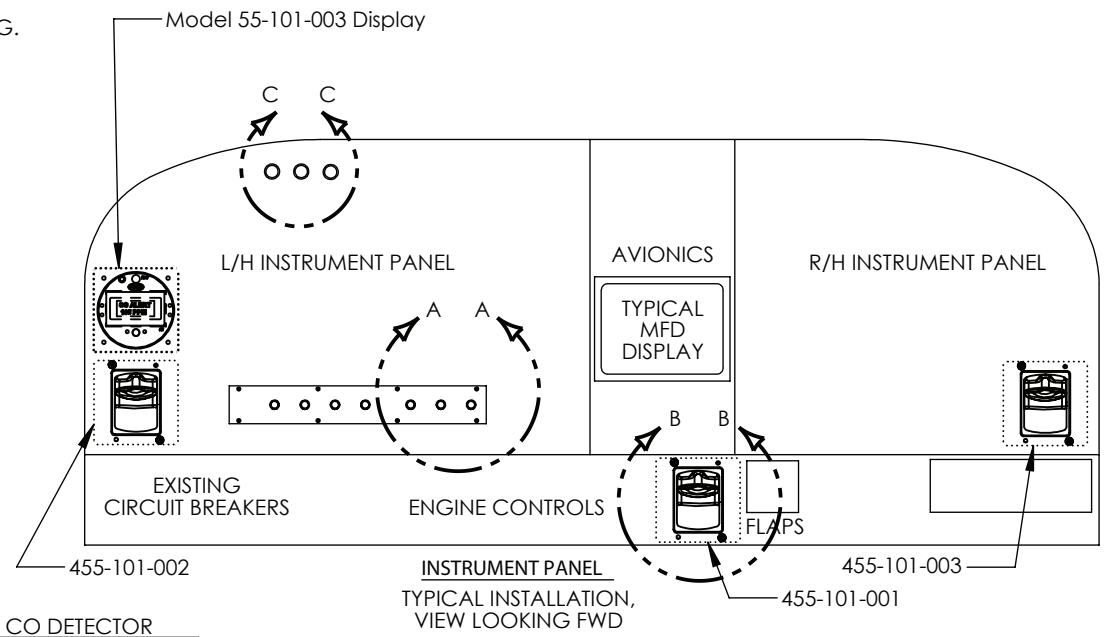


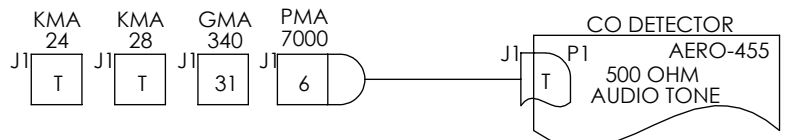
REV.	DESCRIPTION	DATE
A	Initial Release	5/06/2011

**NOTES:**

- 1 EXISTING EQUIPMENT.
- 2 PERMISSIBLE TO TRIM PARTS CREATED BY THIS DRAWING ON INSTALLATION AS REQUIRED.
- 3 TOUCH UP ALL BARE ALUMINUM SURFACES WITH ALODINE PER MIL-C-5541 CLASS 3.
- 4 PARENTHETICAL ENTITIES, ( ), ARE FOR REFERENCE ONLY.
- 5 LOCATE CIRCUIT BREAKER IN THE SAME GENERAL AREA WITH EXISTING CIRCUIT BREAKERS. LABEL AS SHOWN USING STANDARD ENGRAVING, SILKSCREEN, OR OTHER TECHNIQUES. LETTERING TO BE SAME HEIGHT AS EXISTING C/B LETTERING.
- 6 -----DENOTES EXISTING EQUIPMENT.
- 7 GROUND WIRE TO BE AS SHORT AS PRACTICAL
- 9 BEST COMMERCIAL EQUIVALENT MAY BE SUBSTITUTED FOR THIS PART.
- 10 THE INSTALLATION OF WIRING TO BE PERFORMED IN ACCORDANCE WITH AC 43.13-1B, 2A, ACCEPTABLE METHODS, TECHNIQUES, AND PRACTICES - AIRCRAFT ALTERATIONS. CHAPTER 11. ALL WIRE TO BE MIL-W-22759/T6 OR EQUIVALENT.
- 11 LETTERING TO BE .10 HIGH MINIMUM, WHITE, HELVETICA, LOCATED APPROX AS SHOWN. USE STANDARD SILKSCREENING, ENGRAVING OR PLACARD TECHNIQUES.
- 13 SEE OWNERS MANUAL 455-201 FOR INSTALLATION CRITERIA.
- 14 SEE MFG INSTALLATION MANUAL FOR RS-232 HOOKUPS.
- 15 THE FOLLOWING IS A GUIDE FOR UNSWITCHED AUDIO PINOUTS. PINOUTS MUST BE VERIFIED WITH LATEST MANUFACTURING DRAWINGS.



AURAL TONE UNSWITCHED INPUT



- 17 OPTIONAL IF DETECTOR IS INSTALLED AWAY FROM THE PILOTS REACH OR INSTALLED IN A REMOTE APPLICATION. LOC: LH INSTRUMENT PANEL
- 18 SPARE GROUND USED BY SOME DISPLAY MFG'S EXAMPLE GARMIN 900 AND G1000. SEE MFG INSTALLATION MANUAL.
- 19 MFD CONTROLLED BY RS232 REMOTE TEST/RESET AND OTHER FUNCTIONS.



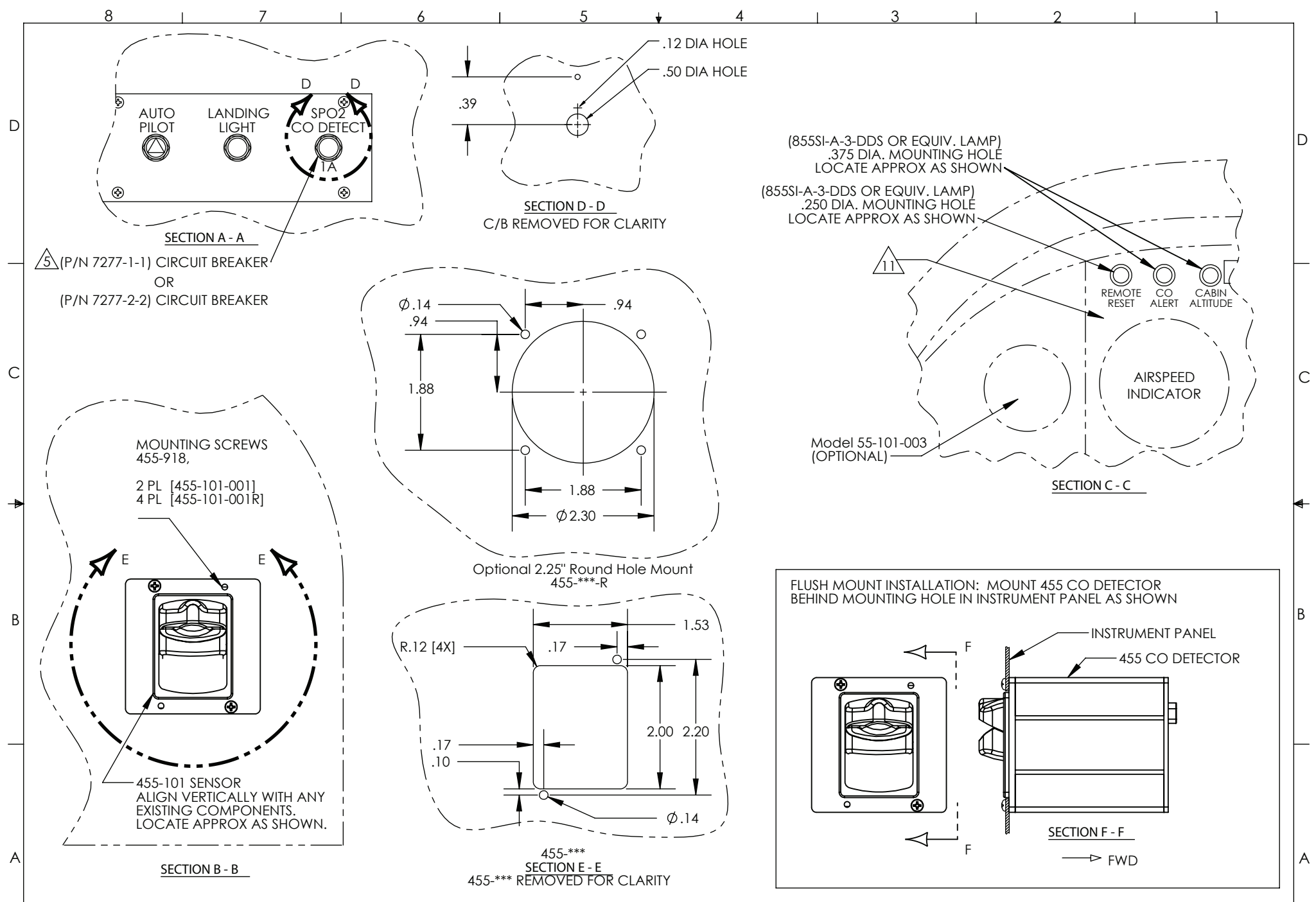
© COPYRIGHT CO GUARDIAN LLC  
 THE INFORMATION IN THIS DRAWING IS CONFIDENTIAL AND IS THE INTELLECTUAL PROPERTY OF CO GUARDIAN LLC. REPRODUCTION IN WHOLE OR IN PART WITHOUT WRITTEN PERMISSION OF CO GUARDIAN LLC IS PROHIBITED.

DO NOT SCALE DRAWING  
 TOLERANCES UNLESS OTHERWISE SPECIFIED:  
 METRIC IMPERIAL ANGLES  
 X ±1.00mm .X ±.05"  
 .X ±.3mm .XX ±.01" ±1°  
 .XX ±.1mm .XXX ±.005"

DESIGN: B. FALK [5-6-11]  
 SCALE: N/A  
 DWG #: 455-202

APPRVD: A. VIJ [5-6-11]

DRAWING NAME: SP02-CO Sensor Installation  
 REVISION: A  
 NEXT ASSY: 455-101  
 SHEET: 1 of 6



1951 EAST AIRPORT DR.  
TUCSON, AZ 85756-6902

© COPYRIGHT CO GUARDIAN LLC  
THE INFORMATION IN THIS DRAWING IS CONFIDENTIAL  
AND IS THE INTELLECTUAL PROPERTY OF CO  
GUARDIAN LLC. REPRODUCTION IN WHOLE OR IN  
PART WITHOUT WRITTEN PERMISSION OF CO  
GUARDIAN LLC IS PROHIBITED.

DO NOT SCALE DRAWING  
TOLERANCES UNLESS  
OTHERWISE SPECIFIED:  
METRIC IMPERIAL ANGLES  
X ±1.00mm X ±.05"  
.X ±.3mm .XX ±.01"  
XX ±.1mm .XXX ±.005" ±1°

DESIGN:  
B. FALK [5-6-11]

APPRVD:  
A. VIJ [5-6-11]

DRAWING NAME:  
SP02-CO Sensor Installation

SCALE:  
N/A

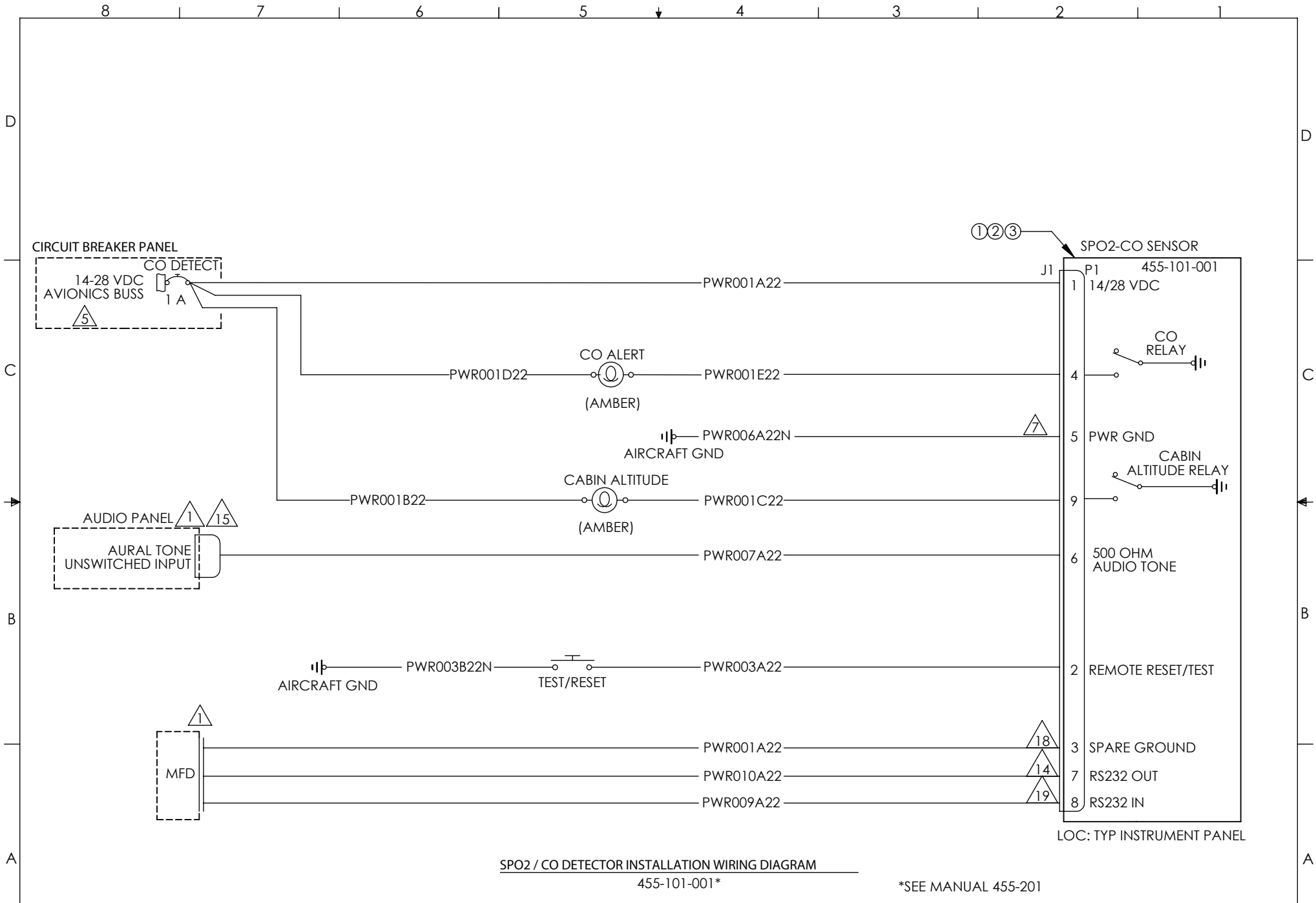
DWG #

455-202

REVISION  
A

NEXT ASSY  
455-101

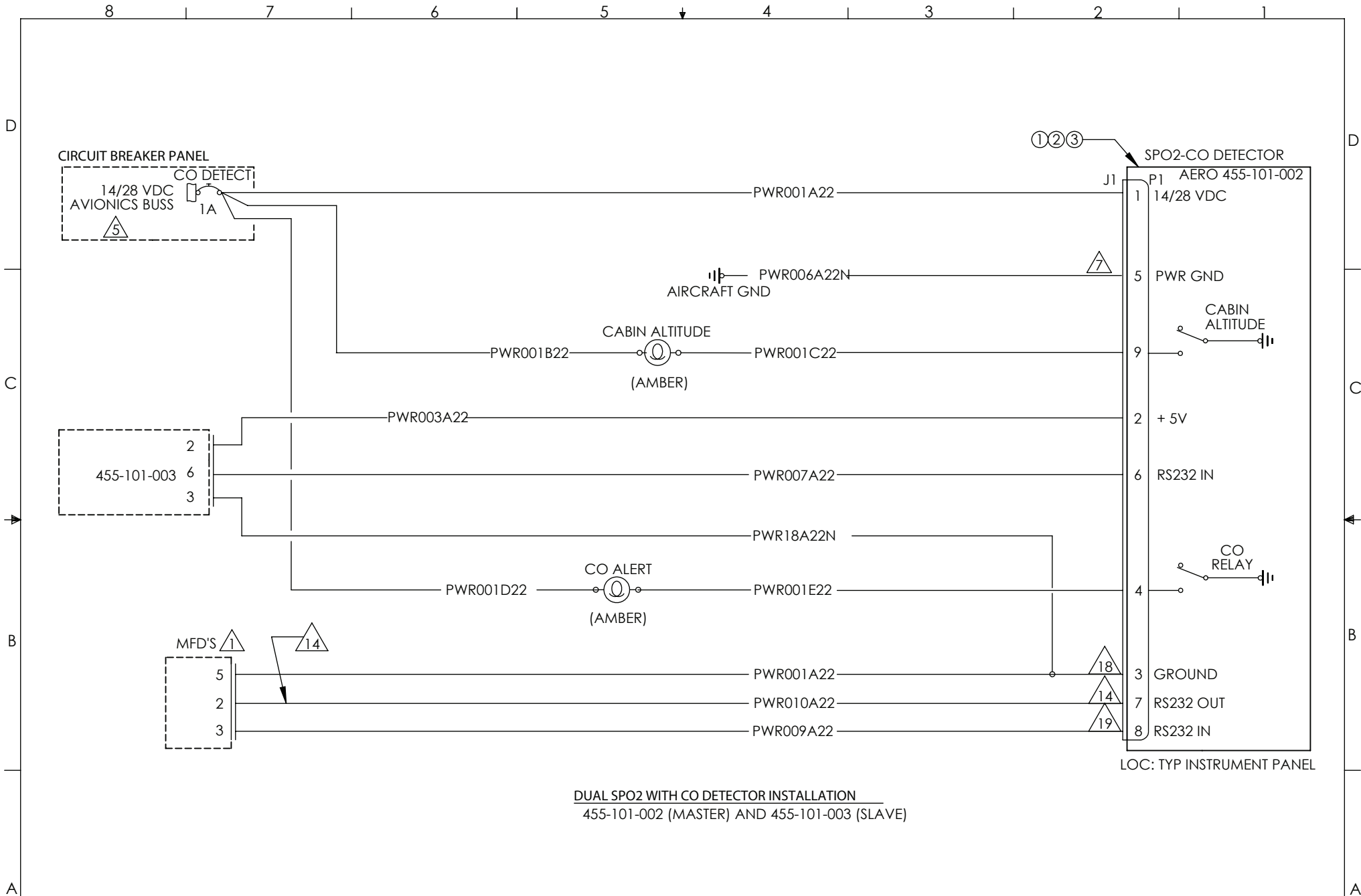
SHEET:  
2 of 6



SPO2 / CO DETECTOR INSTALLATION WIRING DIAGRAM  
 455-101-001\*

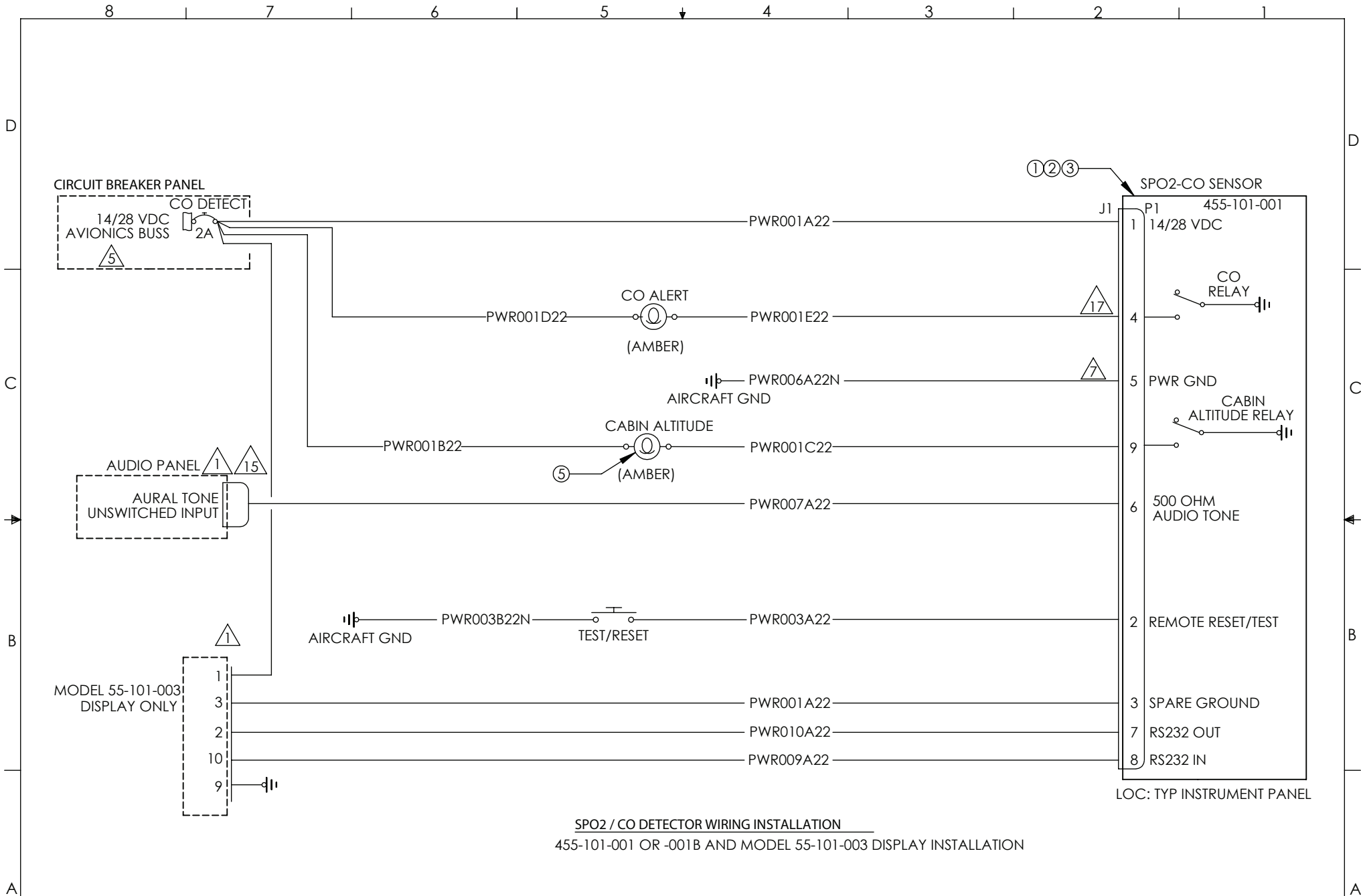
\*SEE MANUAL 455-201

 1951 EAST AIRPORT DR. TUCSON, AZ 85756-6902	© COPYRIGHT CO GUARDIAN LLC THE INFORMATION IN THIS DRAWING IS CONFIDENTIAL AND IS THE INTELLECTUAL PROPERTY OF CO GUARDIAN LLC. REPRODUCTION IN WHOLE OR IN PART WITHOUT WRITTEN PERMISSION OF CO GUARDIAN LLC IS PROHIBITED.	DO NOT SCALE DRAWING TOLERANCES UNLESS OTHERWISE SPECIFIED: METRIC IMPERIAL ANGLES X ±1.00mm .X ±.05" .X ±.3mm .XX ±.01" ±1° .XX ±.1mm .XXX ±.005"		DESIGN: <b>B. FALK [5-6-11]</b>	APPRVD: <b>A. VIJ [5-6-11]</b>	DRAWING NAME: <b>SPO2-CO Sensor Installation</b>		
		SCALE: <b>N/A</b>	DWG # <b>455-202</b>	REVISION <b>A</b>	NEXT ASSY <b>455-101</b>	SHEET: <b>3 of 6</b>		



**DUAL SPO2 WITH CO DETECTOR INSTALLATION**  
 455-101-002 (MASTER) AND 455-101-003 (SLAVE)

 1951 EAST AIRPORT DR. TUCSON, AZ 85756-6902	© COPYRIGHT CO GUARDIAN LLC THE INFORMATION IN THIS DRAWING IS CONFIDENTIAL AND IS THE INTELLECTUAL PROPERTY OF CO GUARDIAN LLC. REPRODUCTION IN WHOLE OR IN PART WITHOUT WRITTEN PERMISSION OF CO GUARDIAN LLC IS PROHIBITED.	DO NOT SCALE DRAWING TOLERANCES UNLESS OTHERWISE SPECIFIED: METRIC IMPERIAL ANGLES X ±1.00mm .X ±.05" .X ±.3mm .XX ±.01" .XX ±.1mm .XXX ±.005" ±1°		DESIGN: <b>B. FALK [5-6-11]</b>	APPRVD: <b>A. VIJ [5-6-11]</b>	DRAWING NAME: <b>SPO2-CO Sensor Installation</b>		
		SCALE: <b>N/A</b>	DWG # <b>455-202</b>	REVISION <b>A</b>	NEXT ASSY <b>455-101</b>	SHEET: <b>4 of 6</b>		



**SPO2 / CO DETECTOR WIRING INSTALLATION**  
 455-101-001 OR -001B AND MODEL 55-101-003 DISPLAY INSTALLATION



1951 EAST AIRPORT DR.  
 TUCSON, AZ 85756-6902

© COPYRIGHT CO GUARDIAN LLC  
 THE INFORMATION IN THIS DRAWING IS CONFIDENTIAL  
 AND IS THE INTELLECTUAL PROPERTY OF CO  
 GUARDIAN LLC. REPRODUCTION IN WHOLE OR IN  
 PART WITHOUT WRITTEN PERMISSION OF CO  
 GUARDIAN LLC IS PROHIBITED.

DO NOT SCALE DRAWING  
 TOLERANCES UNLESS  
 OTHERWISE SPECIFIED:  
 METRIC IMPERIAL ANGLES  
 X ±1.00mm .X ±.05"  
 .X ±.3mm .XX ±.01" ±1°  
 .XX ±.1mm .XXX ±.005"

DESIGN:  
**B. FALK [5-6-11]**

APPRVD:  
**A. VIJ [5-6-11]**

DRAWING NAME:  
**SPO2-CO Sensor Installation**

SCALE:  
**N/A**

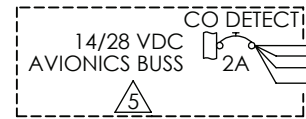
DWG #  
**455-202**

REVISION  
**A**

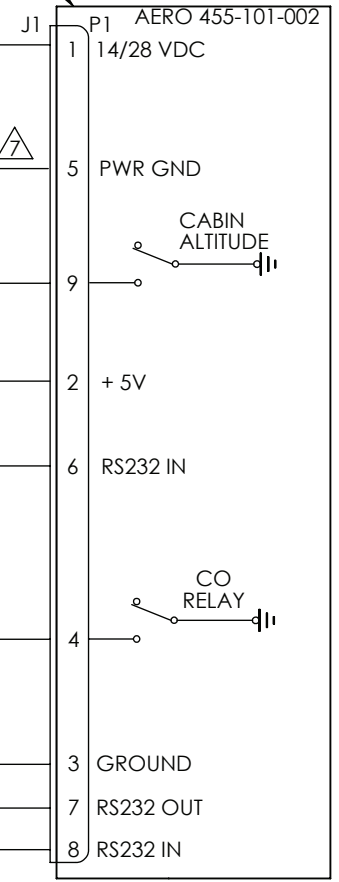
NEXT ASSY  
**455-101**

SHEET:  
**5 of 6**

CIRCUIT BREAKER PANEL



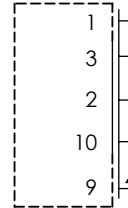
①②③ SPO2-CO DETECTOR



SPO2-CO DETECTOR



55-101-003



AVIONICS GROUND

SPO2/CO DETECTOR INSTALLATION WIRING DIAGRAM  
455-101-002, 455-101-003, AND 55-101-003 INSTALLATION

LOC: TYP INSTRUMENT PANEL



1951 EAST AIRPORT DR.  
TUCSON, AZ 85756-6902

© COPYRIGHT CO GUARDIAN LLC  
THE INFORMATION IN THIS DRAWING IS CONFIDENTIAL  
AND IS THE INTELLECTUAL PROPERTY OF CO  
GUARDIAN LLC. REPRODUCTION IN WHOLE OR IN  
PART WITHOUT WRITTEN PERMISSION OF CO  
GUARDIAN LLC IS PROHIBITED.

DO NOT SCALE DRAWING  
TOLERANCES UNLESS  
OTHERWISE SPECIFIED:  
METRIC IMPERIAL ANGLES  
X ±1.00mm .X ±.05"  
.X ±.3mm .XX ±.01" ±1°  
.XX ±.1mm .XXX ±.005"

DESIGN:  
B. FALK [5-6-11]

APPRVD:  
A. VIJ [5-6-11]

DRAWING NAME:  
SPO2-CO Sensor Installation

SCALE:  
N/A

DWG #  
455-202

REVISION  
A

NEXT ASSY  
455-101

SHEET:  
6 of 6