

Lone Star Aviation, Corp.  
604 S. Wisteria Street  
Mansfield, Texas 76063  
682-518-8882  
682-518-8831 fax

# POWER ADAPTER FAA TSO-C71 APPROVED

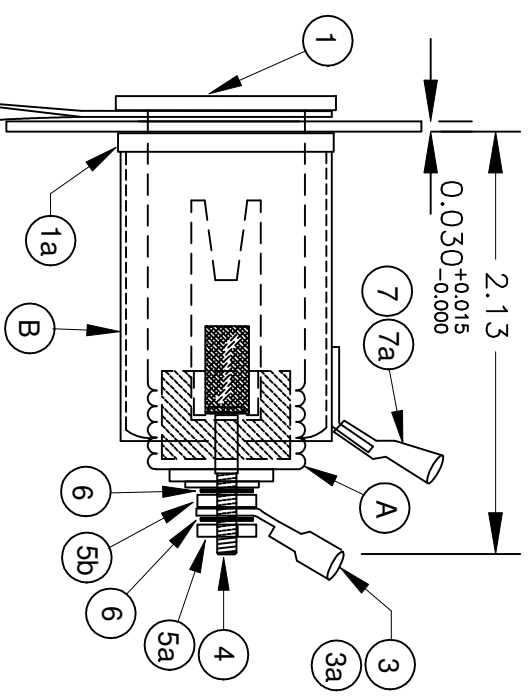
REV	ECO #	ZONE	DESCRIPTION OF CHANGE(S)	DATE	APPROVED
Rev-0			INITIAL RELEASE	4-4-12	JRM/RLS
Rev-1			New Plug Design	5-16-14	LMD/JRM
Rev-2			Updated Specs, Added Crimp Tool	7-6-16	DPC/JRM
Rev-21			Added Items 3a & 7a	12-9-16	DPC/JRM

### Electrical Specifications:

Operating Voltage: 10VDC - 32VDC  
Operating Current: 10 Amps - Cont. 12 Amps - Peak  
Circuit Breaker (recommended): 15 Amp  
Wire Size (Min. @ max current): 16 AWG  
Insulator: Ceramic Epoxy Core  
Connectors: (Pos) #8 Ring Terminal  
(Neg) .250 Quick Disconnect  
Crimp Tool: FTZ Industries #94130  
Controlled Cycle Crimp Tool

### Mechanical Specifications:

Terminal Hardware: #8-32 Lock Nut (Cadmium Plated)  
Torque Spec: 5-6 in lbs  
Mounting Hardware: #8-32x1/2 Screw PPH or equivalent  
Panel Hole Cut Out (w/ Mounting Bracket): 1.150 in (.890 in w/o Mounting Bracket):



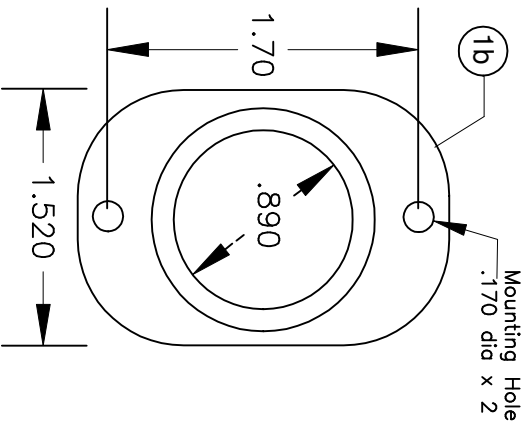
### Electrical Connection Installation (See Note 1):

- Remove Outer Nut (5a), Lock Washer (6), & Ring Terminal (3)
- DO NOT Loosen Inner Nut (5b)\*\*\* This nut is torqued to factory specs
- Crimp appropriate gauge wire to corresponding gauge Ring Terminal (3) or (3a)
- Reinstall Ring Terminal (3) or (3a), Lock Washer (6) & Outer Nut (5a).
- Firmly hold Inner Nut (5b) while tightening Outer Nut (5a) to prevent Inner Nut from turning
- Torque to 5 to 6 inch/lbs\*\*\*
- Crimp appropriate gauge wire to corresponding gauge Quick Disconnect Terminal (7) or (7a)

### Mechanical Installation:

- A. (with Mounting Bracket)**
- Tighten outer sleeve (B) around inner housing (A)
  - Add Loctite 242 to threads of housing
  - Drill 1.150in Dia hole in panel
  - Attach with #8-32 Phillips Pan Head screws

- B. (without Mounting Bracket)**
- Unthread outer sleeve (B) from inner housing (A)
  - Remove and discard mounting bracket (1b)
  - Place assembly into panel hole and reinstall spacer (1a) and outer sleeve (B) using Loctite 242
  - Check alignment of rubber Cap (2,2a,2b) and tighten outer sleeve (B)



**POWER ADAPTER LS03-05025** Lone Star Aviation, Corp.  
TSO-C71 Cat A 10C, 12P Amps Mansfield, Texas 76063  
MODEL NO: LS03-05025 682-518-8882  
SERIAL NO: 008-001000 www.lonestaraviation.com

**Note 1**  
Recommended References:  
FAA AC 43.13-1B  
Acceptable Methods, Techniques and Practices-Aircraft Inspection and Repair, Chapter 11  
FAA AC 43.13-2B  
Acceptable Methods, Techniques and Practices-Aircraft Alterations

Item	Qty	Part Number	Description
1	1	LS03-05025	Power Adapter (FAA TSO-C71)
1	1	LS01-26015	Assembly: Housing (A), Sleeve (B)
1a	1	LS01-26015a	Spacer
1b	1	LS01-26015b	Mounting Bracket
2	1	LS01-19057	Cap Rubber 13.8V
2a	1	LS01-19057-A	Cap Rubber Blank (Optional)
2b	1	LS01-19058	Cap Rubber 12.0V (Optional)
2c	1	LS01-19059	Cap Rubber 28V (Optional)
3	1	LS01-19055	#8 Ring Terminal, 14-16 AWG, w/shrink tube
3a	1	LS01-19055A	#8 Ring Terminal, 18-22 AWG, w/shrink tube
4	1	LS01-13009	#8-32 screw x 1" TP
5a,5b	2	LS01-19005	#8-32 Hex Nut (Cadmium Plated)
6	2	LS01-19006	#8 Lock Washer
7	1	LS01-19056	Quick Disconnect, 14-16 AWG, .250 FM, w/shrink tube
7a	1	LS01-19056A	Quick Disconnect, 18-22 AWG, .250 FM, w/shrink tube
8	1	LS01-21996	Power Adapter Label, TSO-C71



**TITLE**  
Cigarette Lighter Adapter Install  
LS03-05025, LS03-05025-12V  
LS03-05025-28V LS03-05025-BB

**APPROVALS**  
DATE: 7-6-16  
DRAWN: DPC  
APPROVED: JRM  
NEXT ASSY:

**SCALE**  
DRAWING NO: LS03-05025  
SCALE: NONE  
SHEET: 1 OF 1