

## Installation Instructions for RV-10

(Kit R1930001)

This is not an STC'd installation and is only available for Experimental Aircraft

Doc: 9051-0193-001

Rev	Date	Approved
A	8/30/2007	GH

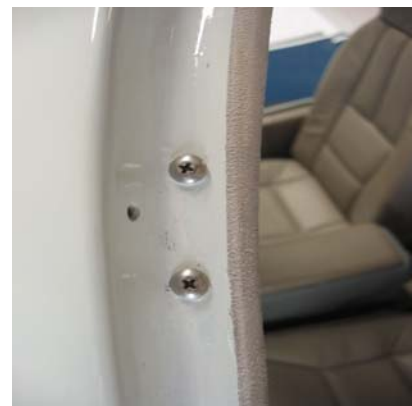
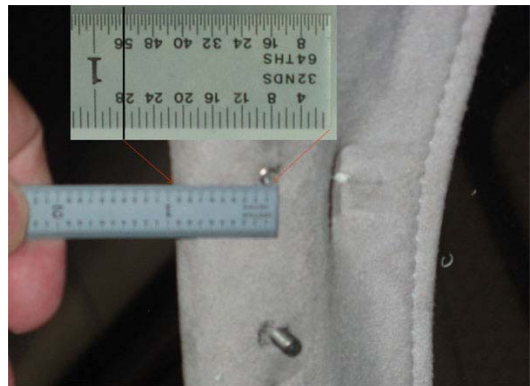
### Preparation and tools needed:

- Measuring tape or ruler.
- #30 and #12 drill bits
- Phillips #2 Screwdriver
- 3/8" socket and torque wrench

### Hardware:

- |   |               |                                |
|---|---------------|--------------------------------|
| 4 | 1032NLINS BLK | #10-32 Locknut                 |
| 4 | AN526C1032R12 | #10-32 x 3/4" Truss head Screw |
| 4 | AS-10         | #10 Washer                     |
| 1 | 532 Hex Key   | 5/32" Hex Key                  |
| 1 | 964 Hex Key   | 9/64" Hex Key                  |

- For the pilot side, position the Sunvisor so the following positioning locations are met:
  - A. Middle of top mounting plate hole is level with upper edge of side window.
  - B. Centers of each mounting plate hole are 7/8" from the rear edge of door frame.
  - C. Mark centers of holes to prepare to install Sunvisor
- In the top hole location, drill a small hole using a #30 drill bit, then expand the hole size using a #12 drill bit. This sequence is recommend to help insure hole placement accuracy when using the larger #12 drill bit. Repeat procedure with bottom hole location.
- Place in both #10 Phillips Truss Head screws so the screw heads are in the base of the outside door channel.



- Install Sunvisor by placing mounting base through the screws and securing with washers and lock nuts provided. If desired, use silicone or other sealant like RTV around the heads of the #10 screws to seal from moisture.



- Torque to 25 lb-in

- Sunvisor tension is preset at factory. If additional tensioning is required, small adjustments using the supplied Hex keys can be made. Proper tension should allow smooth, but not loose movement.

- Repeat same steps for passenger side.



**Continued Airworthiness Instructions:**

- **(On the ground only)**

- Periodically clean the lenses with a soft cloth, mild soap and water or an approved aviation grade windscreen cleaner. Do not use abrasives on the lens.
- Periodically adjust the pivot tensions on the visor assemblies.

- Updates to this continued airworthiness section are available on the Rosen Website. ([www.rosenvisor.com](http://www.rosenvisor.com))

The most up to date version of this document is available on the Rosen Website. ([www.rosenvisor.com](http://www.rosenvisor.com))

