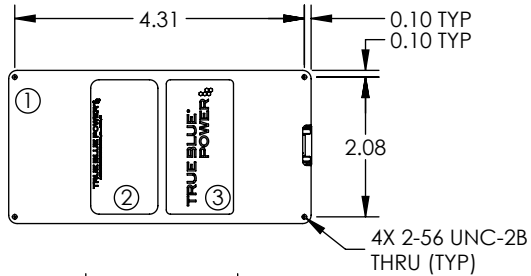
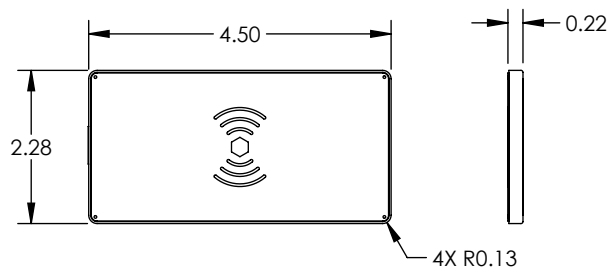
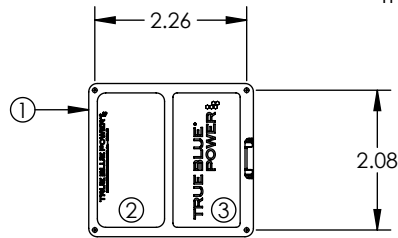
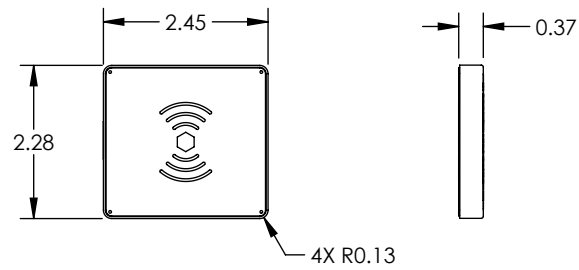


Configuration		
Dash #	Assy, TWC15	Nameplate
6430015-1	9019621-1	9019701-1
6430015-2	9019696-1	9019701-2
6430015-3	9019690-1	9019701-3

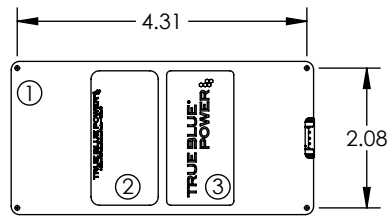
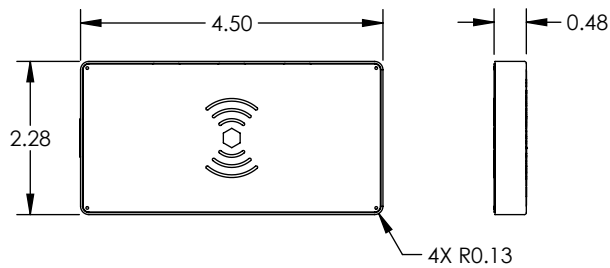
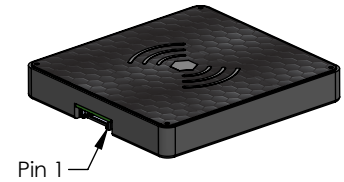
Revision				
ECO	Rev.	Description	Date	Approved
	A	Production release.	02/08/22	MEK/Sch
7484	B	Revised dimensions for thickness	05/17/22	MEK/MKN



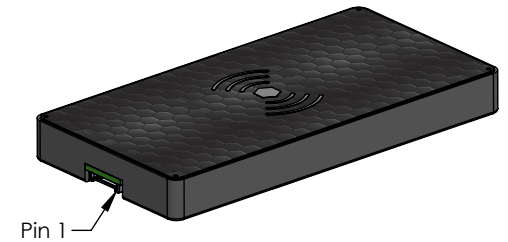
-1 Configuration



-2 Configuration



-3 Configuration



Specifications	
Model Number	TWC15
Input	12-32 VDC, 26W Max
Output	15W Max, wireless
Qualification	FAA TSO-C71 RTCA DO-160G (See Installation Manual)
Case	Anodized Aluminum, Black
Mating Connector Kit	9019739-1
Weight	6430015-1 3.4 oz (96 g)
	6430015-2 3.0 oz (85 g)
	6430015-3 5.9 oz (167 g)
Installation Manual	9019726

Connector Pinout	
1	12-32 VDC Input
2	Ground
3	Status
4	Enable

Item	Qty	Part Number	Description
1	1	See Config	Assy, TWC15
2	1	See Config	Nameplate, Wireless, TWC15
3	1	9019725-1	Label, TBP, Compact

UNLESS OTHERWISE SPECIFIED, ALL DIMENSIONS ARE IN INCHES.
TOLERANCE:
FRACTIONAL=±1/64
.XX=±0.015
.XXX=±0.005
.XXXX=±0.002
ANGULAR=±0.5°
WEIGHT N.T.E. +5%
BREAK ALL SHARP EDGES
THREADS PER MIL-S-7742

DRAWN:
MEK
02/08/2022

APPROVED:
Sch
02/09/2022

This document discloses proprietary information of Mid-Continent Instrument Co., Inc. It may be reproduced or disclosed only with written permission of Mid-Continent Instrument Co. and is not to be used in any way detrimental to the interests of Mid-Continent Instrument Co., Inc.

TITLE:
Charger, Wireless, 15W

SCALE: NONE DO NOT SCALE THIS DRAWING SHEET: 1 of 1

TRUE BLUE POWER
A division of Mid-Continent Instrument Co., Inc.

PART NUMBER:
6430015