

ROSEN PRODUCT DEVELOPMENT, INC.
P.O. Box 21636, Eugene, Or. 97402 (503)-342-3802
INSTALLATION INSTRUCTIONS
for
BK117 MONORAIL SUNVISOR SYSTEM
Drawing #RBK117-400

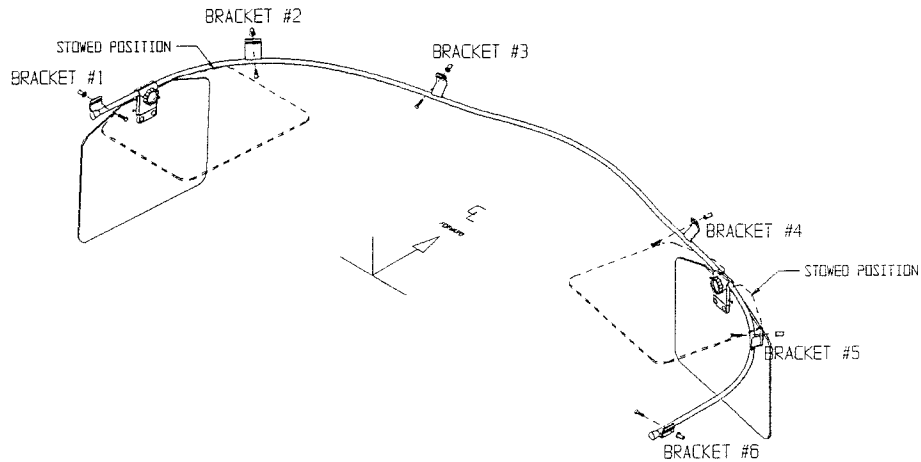


Figure 1 - Monorail System

- * Your Rosen Monorail Sunvisor System consists of one complete cockpit rail and two visor assemblies as shown in Figure 1.
- * Remove the monorail from the shipping container and carefully place it inside the helicopter cockpit.
- * Using an assistant, hold the rail up to the front overhead box structure so that the side view of the front left bracket (#3) is as it appears in Figure 2.

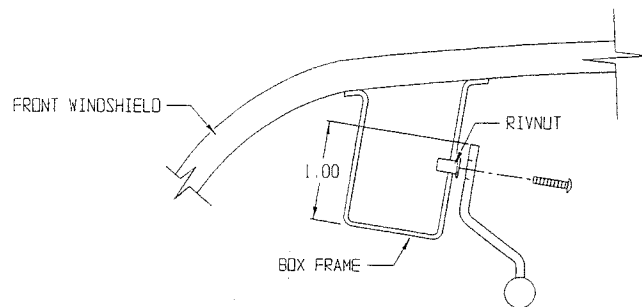
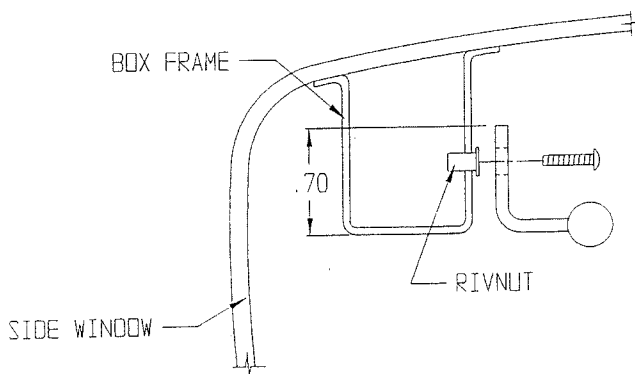
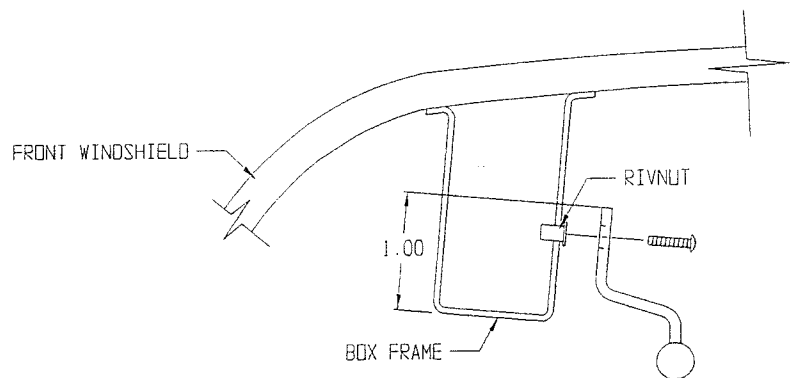


Figure 2 - (Side View - Bracket #3 & #4)

- * With the front brackets(#3 & #4) equally spaced from the center, insuring that the rail has adequate clearance around the overhead console (Approx. 3/16" clearance). Mark the front bracket slots on the aluminum box frame.
- * Drill a small pilot hole in the center of each slot mark, drilling through the aluminum box frame. (DRILL ONLY INTO THE INTERIOR SECTION OF THE BOX STRUCTURE and not the structural outer surface.)
- * Using the pilot holes as reference, Drill a hole in the interior portion of the aluminum box structure with a #2 drill for an A8K75 rivnut. (Installation hole size references are .221" Min. and .226" Max.) Drill only into the interior section of the box structure.
- * Since the A8K75 rivnut is keyed, use a key cutting tool or simply a small file to give a keyway at the surface of each hole.
- * Install the front bracket(#3 & #4) Rivnuts.
- * Using the AN526C#8-32R10 fasteners provided in your installation packet fasten the rail temporarily in place.
- * Locate the side brackets(#1,#6 & #2,#5) on the left and right aluminum box frame as shown in Figure 3 and mark the slot locations as with the front brackets.



(Side View - Bracket #1 & #6)



(Side View - Bracket #2 & #5)

Figure 3

- * Remove the monorail and repeat the procedure to install the A8K75 rivnuts. Again, Drill only into the interior section of the aluminum box structure.
- * Reinstall the monorail using the AN526C#8-32R10 fasteners provided.
- * Congratulations! You have now completed the installation procedures. Please proceed to the Operation and Care instructions.

OPERATION AND CARE INSTRUCTIONS

- * With the thumb knob inboard place both visor assemblies on the monorail, one on either side of the aircraft.
- * To operate your visors, loosen the thumb tension knob by turning in the counterclockwise direction and, while still holding the knob, slide the visor in the desired direction. (A snap ring is installed on the rear of the thumb knob to prevent the pilot from inadvertently over-loosening the visor assembly.)
- * The unique split clamping block design allows travel right past the mounting brackets.
- * To lock the visor in place, simply tighten the thumb knob by turning in the clockwise direction.
- * Your visors incorporate a swivel modification that allows the visor to rotate in the vertical axis. Swivel tension can be increased or decreased by adjusting the set screw on the side of the visor clamping block as shown in Figure 4.

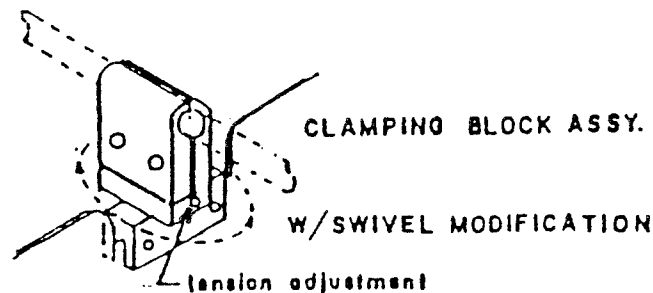


Figure 4

- * The visor assembly will stow almost anywhere on sides where rotation will not hit the overhead panel, but suggested stowage is to the far left/right end or just forward of the middle side brackets on either side as shown in Figure 1.
- * To stow the visors simply tighten the thumb knob and rotate the visor upward. There is a small learning curve in determining how tight the visor should be. After several operations the visor assembly can be stowed with ease and the correct tension used.
- * Clean visor lens with a mild soap and water using a soft linen cloth.
- * For the first time you will be able to see your traffic while still cutting the sun's glare, reducing pilot fatigue. The visors are designed to cut more than 99% of the ultra violet in the harmful range and 75% of the infrared light, which is the heat you feel.
- * Your system has a one-year warranty, you must complete and return the enclosed warranty card within 30 days of purchase.
- * Enjoy your New Rosen Monorail Sunvisor System. We always welcome comments regarding our products or suggestions for new products to improve your aircraft.