

AEROTOUGH GF Bushing Installation Instructions

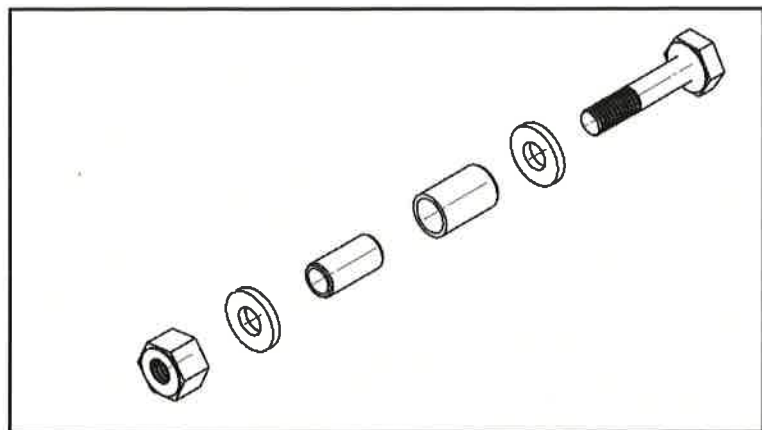
For Bonanza Aircraft MBA-10005

Reference 110001

The purpose in building this kit is to replace the stock bushings and sleeves with self-lubricating bushings and stainless steel sleeves. Dimensionally, the parts are interchangeable. These AeroTough GF bushings are self-lubricating. If they are oiled, there is no harm done. The bushings should never seize as a result of corrosion. In that sense, they are an improvement over the original parts.

1. Check the Bonanza AeroTough GF Door Hinge Kit assembly for all contents. Each kit for the Bonanza should contain one AeroTough GF bushing (MBA-10005), one stainless steel sleeve, one bolt, one nut and two washers.
2. With the aircraft on jacks, first remove the outer gear doors. Note the position of the washers separating the lower rod ends from the gear door brackets (so they can be reinstalled in their existing configuration).
3. Clean the door brackets.
4. Verify the hole configuration. Is the door hinge an OEM Beech part or repaired? If an OEM Beech part, continue to verify the hole physical size. If not OEM Beech part or within OEM Beech part tolerance, contact MBA. If a special size is needed, contact MBA.
5. Press the blue AeroTough GF bushings into position, fitting the yellow Thordon Spacer (Drawing No. TG-23142-Spacer) between the two bracket legs to prevent bending. The bushing should protrude an equal distance from either end of the bracket.
6. Use a small C-clamp and slowly press the bushing into position at a constant rate.
7. Ensure that the fit of the AeroTough GF is sufficiently tight to avoid rotation. If it is loose, an oversized bushing will be required. Therefore, a measurement must be taken to determine the right size to be used. The AeroTough GF bushing must not be able to rotate.
8. Re-assemble the door in position with the new stainless steel sleeve for Bonanza kits.
9. Fit the bolt, washers and nut. Ensure that the nut is tightened only to the point where the sleeve is firmly gripped by the bracket legs. Follow the standard maintenance procedure specified in the aircraft maintenance manual for tightening the bolt.
10. For the inboard doors, partial gear retraction will be required for access; otherwise the procedure is the same.

We assume there is no history of bushing seizure or damage to the structure. Otherwise, the damage should be repaired prior to fitting the AeroTough GF Door Hinge Kit.



AeroTough GF Door Hinge Kit diagram