

SYM	DESCRIPTION	DATE	APPROVED
A	AS ISSUED TO TOOLING	02-22-08	ERM

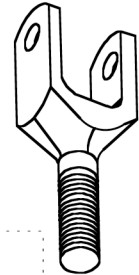
# PITCH LINK SAFETY RETENTION SYSTEM

**PART NO. RP-1**

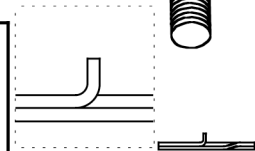
## INSTALLATION INSTRUCTIONS

1. Check the clevis, tube assembly and grooved nuts for burrs and rough threads.
2. Apply corrosion preventative compound to all threads at assembly.
3. Slide snap ring or spiral ring onto clevis. If using modified spiral ring the bend faces clevis (see expanded view).
4. Slide retainer on to clevis with pins pointing away from clevis.
5. Screw the grooved nut onto the clevis.
6. Slide the nut plate flat surface with pinhole side onto the clevis engaging retainer pins.
7. Screw clevis into tube assembly and follow manufacturers installation instructions.
8. Slide nut plate fully over tube assembly's welded hex nut.
9. Run nut up to nut plate and torque to manufacturer installation instructions 150-200 inch pounds.
10. Slide retainer over grooved nut to engage retainer pins into pinholes in nut plate. Rotation of the retainer maybe required to fully engage pins into pin-holes in nut plate. Simply lift retainer off nut and rotate retainer until pins align with nut plate pinholes.
11. Install FAA-PMA snap ring, spiral ring or modified spiral ring provided by TRUE-LOCK LLC only and engage into grooves of grooved nut. a. Using snap ring pliers apply only enough force as necessary to expand snap ring over grooved nut to engage grooves fully. b. Using spiral ring, lubricate lightly with oil or grease; separate coils and insert end of ring into groove; wind ring into grooves of grooved nut. Apply only enough force necessary to wrap spiral ring over grooved nut to engage grooves fully. If spiral ring or the snap ring that is being installed or removed and over stretching occurs you are not to install the damaged ring.
12. Fill out FAA Form 337, reference STC NO. SA00780SE and make appropriate log book entry. Weight and balance change negligible.

CLEVIS



MODIFIED  
SPIRAL RING  
BEND FACES  
CLEVIS



SPIRAL RING



SNAP RING



RETAINER



GROOVED NUT



NUT PLATE



TUBE  
ASSEMBLY



PATENT PENDING

ERM 2/22/08	TRUE-LOCK LLC		
DESIGNER / CHECKER	RP-1 INSTALLATION INSTRUCTIONS		
ERM 2/22/08	TITLE	C PART NO. RP-1	
RELEASE TO PROD	GRAPHITE 8.0	UNIT WT. .00 LBS	SHEET 1 OF 2
ITEM	RP-1		

# APPROVED PART REPLACEMENT RP-1

ITEM	MAKE	MODEL	PART REPLACEMENT
1	Bell Helicopter Textron Canada Limited	206A, 206A-1 (OH-58A), 206B, 206L, 206L-1, 206L-3, 206L-4, 407	Main rotor pitch link tube assembly components "in Pylon Installation" from each end of clevis to tube

ERM 2/22/08	TRUE-LOCK LLC		
ERM 2/22/08	RP-1 INSTALLATION		
ERM 2/22/08	TITLE	INSTRUCTIONS	
RELEASE TO PROD			
SYSTEM Graphite 8.0	C	PART NO.	RP-1
FILENAME RP-1		UNIT WT. .00 LBS	SHEET 2 OF 2