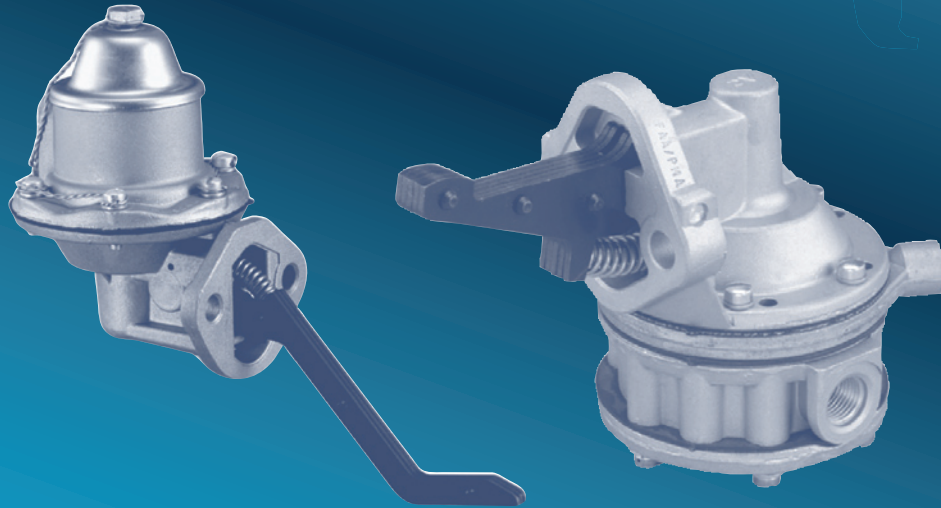


**TFE**  
**MPFS**  
**excellence**

# Lycoming and TCM Fuel Pumps (New and Overhauled)



## TCM Application Data

	Model Number	Engine Eligibility
Overhauled	4036 & 9076	C-75. -12. -12F. C-90. -8. -8F. -12.-12F
New	AF-40695	
Overhauled	6861	0-200-A C-90-16F
New	AF-631391	
Overhauled	9051 & 9867 -12	A-65. -8. -8F. C-85. -8. A-75. A-100. C-125. -2.
New	AF-40585	C-145. -2. 2H

See the reverse side for Lycoming application data



Aero Accessories  
 1240 Springwood Avenue, Gibsonville, NC 27249 Phone: 336-449-5054

# AC / Lycoming Diaphragm Fuel Pump Application

Model AC/ Lycoming	Engine Eligibility	Alt. No.	Pressure PSI	Description
40295	O-235, O-290, O-320 (except H Series) O-340, O-360 (see 41452 / LW16335) O-540	75246 or 41271 or LW15472 or AF15472	4 ~ 6	Laminated Arm Channel Arm Channel Arm Channel Arm
40296	IO-320, AIO-320, LIO-320, IO-360 AIO-360, HIO-360, LIO-360, IO-540 IO-720, O-540-L3C5D	75247 or 41234 or LW15473 or AF15473	25 ~ 30	Laminated Arm Channel Arm Channel Arm Channel Arm
41271	O-235, O-290, O-320 (except H Series) O-340, O-360 (see 41452 / LW16335) O-540	AF15472 or LW15472 or 75246 or 40295	4 ~ 6	Channel Arm Channel Arm Laminated Arm Laminated Arm
41234	IO-320, AIO-320, LIO-320, IO-360 AIO-360, HIO-360, LIO-360, IO-540 IO-720, O-540-L3C5D	AF15473 or LW15473 or 75247 or 40296	25 ~ 30	Channel Arm Channel Arm Laminated Arm Laminated Arm
LW15472	O-235, O-290, O-320 (except H Series) O-340, O-360 (see 41452 / LW16335) O-540	AF15472 or 41271 or 75246 or 40295	4 ~ 6	Channel Arm Channel Arm Laminated Arm Laminated Arm
LW15473	IO-320, AIO-320, LIO-320, IO-360 AIO-360, HIO-360, LIO-360, IO-540 IO-720, O-540-L3C5D	AF15473 or 41234 or 75247 or 40296	25 ~ 30	Channel Arm Channel Arm Laminated Arm Laminated Arm
LW14282	Used with Bendix Pressure Carburetor (Aerobatic Use)	41272 or 40595 or	15 ~ 18	Channel Arm Laminated Arm
LW15399	O-320-H, O-360-E, LO-360-E	41270	4 ~ 6	Long Channel Arm
LW16335	O-360-A1G, O-360-A1G6, O-360-A1G6D O-360-A1H, O-360-A2G, O-360A2H, O-360-A4G O-360-A4J, O-360-A4K, LO-360-A1G6D	41452	4 ~ 6	Channel Arm Ports rotated 47 degrees
LW16775	O-360-F1A6	41617	4 ~ 6	Channel Arm Ports Reversed
LW16947	LTO-360-E1A6D	41812	30 ~ 36	Long Channel Arm

- Notes:**
1. High pressure pumps primarily used with fuel injected engines. One exception is the O-540-L3C5D applicable to the Cessna 182 Turbo RG which uses the high pressure fuel pump.
  2. Low pressure pumps are primarily used with carbureted engines. Exceptions are found with low pressure RayJay conversions.
  3. Fuel pump model LW16947 is applicable to the 1981 Piper Turbo Seminole.
  4. Fuel pump model LW16775 is applicable to the Cessna 172 Cutlass RG.
  5. Fuel pump model LW16335 was modified to replace model 40295 pump on specific airframes utilizing the Marval HA-6 carburetor. Known applications are in the Beech B23, C23 Beech 76 and Grumman AA-5B, GA-7. Lycoming Service Instruction 1110B dated April 27, 1979 was issued to provide instructions for modifications if necessary. Since fuel pump model 40295 is again available from Aero Accessories, Inc. this expensive modification will not be necessary.