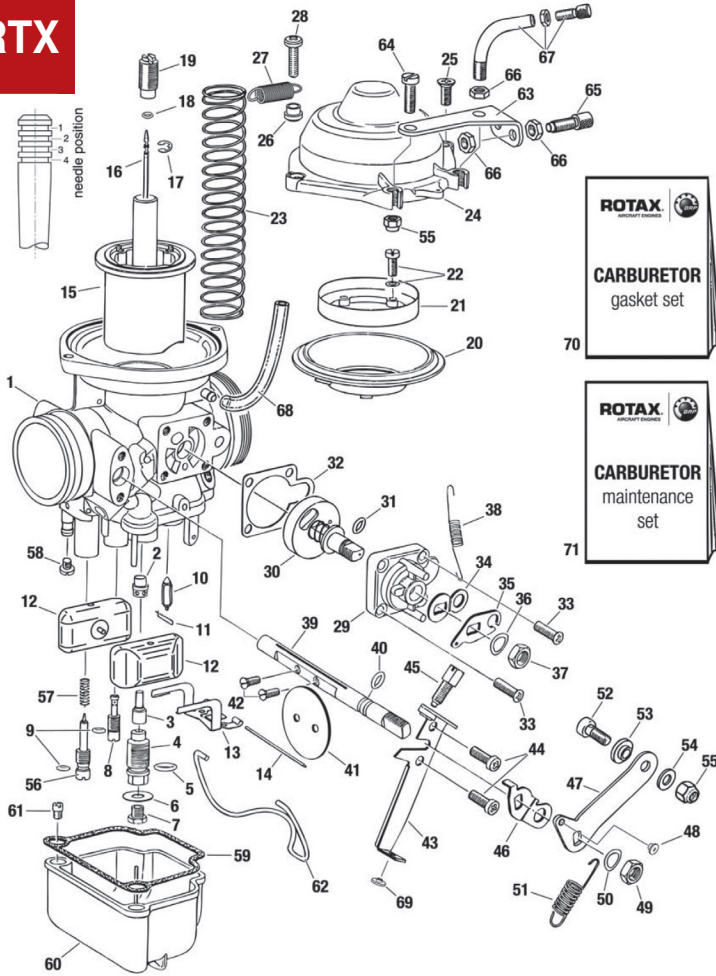




**RTX**



## CARBURETOR - SINGLE PARTS 912 SERIES

Item No.	Part No	Description	Qty. Req.		Price
			912 UL	912 ULS	
2	961-200	DIFFUSER	1		\$19.50
2	961-202	DIFFUSER		1	\$24.95
3	261-607	NEEDLE JET 2.72	1		\$22.10
3	261-608	NEEDLE JET 2.70		1	\$22.10
4	963-130	MIXING TUBE	1	1	\$22.60
5	430-800	O-RING 8x2	1	1	\$3.35
6	827-160	SHIM	1	1	\$1.75
7	268-985	MAIN JET 160		1i	\$11.50
7	268-984	MAIN JET 155	(1)f	1	\$11.50
7	268-996	MAIN JET 158	1		\$11.50
8	963-141	IDLE JET 30	1	1	\$30.70
8	963-143	IDLE JET 35	1	1	\$44.60
9	831-713	O-RING 3.2x1.8	2g	2g	\$3.85
10	261-708	FLOAT NEEDLE VALVE W. VITON TIP	1g	1g	\$43.65
11	261-710	FLOAT NEEDLE CLIP	1	1	\$1.95
12	861-188	FLOATS PAIR	1h	1h	\$131.75
13	861-192	FLOAT BRACKET	1	1	\$19.75
14	929-702	PIN	1	1	\$2.55
15	961-230	CARBURETOR PISTON	1	1	\$148.75
16	961-215	JET NEEDLE	1	1	\$11.55
17	945-785	CIRCLIP	1	1	\$1.85
18	950-430	O-RING 2.5x1.5-N	1	1	\$1.85
19	961-293	FIXATION SCREW	1e	1e	\$20.50
20	861-116	DIAPHRAGM	1	1	\$95.19
21	961-240	RETAINING RING	1	1	\$49.50
22	841-210	COMBINED SCREW M4x12	4	4	\$2.95
23	938-365	THROTTLE VALVE SPRING	1	1	\$17.60
24	961-250	CHAMBER TOP	1	1	\$132.75

Item No.	Part No	Description	Qty. Req.		Price
			912 UL	912 ULS	
25	841-341	COUNTERSUNK SCREW M5x12	1	1	\$1.15
26	847-910	DISTANCE SLEEVE	1	1	\$11.95
27	838-242	SPRING	1	1	\$13.50
28	640-251	OVAL HEAD SCREW M5x20	1	1	\$1.02
29	961-280	CHOKE HOUSING	1	1	\$37.99
30	961-273	CHOKE VALVE ASSEMBLY 1/3	1a,g	1a,g	\$282.63
30	961-278	CHOKE VALVE ASSEMBLY 2/4	1b,g	1b,g	\$282.63
31	950-420	O-RING 5x1.5	1	1	\$6.65
32	950-030	GASKET	1	1	\$4.60
33	841-360	PHILLIPS HEAD SCREW M4x14	4	4	\$1.90
34	848-241	CHOKE LEVER INSIDE	1	1	\$6.20
35	848-245	CHOKE LEVER OUTSIDE	1	1	\$7.95
36	845-035	SPRING WASHER 8.3/13.6/0.4	2	2	\$6.55
37	942-290	HEX. NUT M8x1	2	2	\$3.65
38	938-287	RETURN SPRING	1	1	\$10.50
39	963-992	THROTTLE SHAFT	1	1	\$32.80
40	950-020	O-RING 6x1.9	1	1	\$7.50
41	963-666	THROTTLE VALVE	1	1	\$15.50
42	941-200	SLOTTED HEAD SCREW M3x6	2	2	\$1.95
43	961-262	CABLE SUPPORT 1/3	1a,g	1a,g	\$22.50
43	961-267	CABLE SUPPORT 2/4	1b,g	1b,g	\$22.50
44	240-357	OVAL HEAD SCREW M4x10	2	2	\$0.62
45	963-162	THROTTLE VALVE STOP SCREW	1	1	\$10.95
46	848-232	STOP LEVER 2/4	1b	1b	\$8.99
46	848-230	STOP LEVER 1/3	1a	1a	\$8.95
47-48	963-026	THROTTLE VALVE LEVER 1/3	1a,g	1a,g	\$41.55
47-48	963-021	THROTTLE VALVE LEVER 2/4	1b,g	1b,g	\$47.70
48	963-015	SLEEVE	1	1	\$4.35
49	942-290	HEX. NUT M8x1	2	2	\$3.65
50	845-035	SPRING WASHER 8.3/13.6/0.4	2	2	\$6.55
51	938-289	RETURN SPRING	1	1	\$11.60
52	241-847	ALLEN SCREW M5x12	1	1	\$14.55
53	847-740	GRADUATED SLEEVE	1	1	\$14.95
54	827-800	WASHER A5.5	1	1	\$5.99
55	842-030	LOCK NUT M5	2	2	\$2.05
56	961-222	IDLE MIXTURE SCREW	1	1	\$32.95
57	239-463	COMPRESSION SPRING	1g	1g	\$1.82
58	941-740	SLOTTED HEAD SCREW M3.5x5	1	1	\$1.53
59	830-721	GASKET (rubber)	1	1	\$21.76
60-61	963-230	FLOAT CHAMBER ASSEMBLY 1/3	1	1	\$109.90
60-61	963-232	FLOAT CHAMBER ASSEMBLY 2/4	1	1	\$109.90
61	268-758	JET 85	1	1	\$21.99
61	268-762	JET 105	(1)d	(1)d	\$24.50
61	268-857	JET 120	(1)d	(1)d	\$15.81
61	268-763	JET 130	(1)d	(1)d	\$14.37
61	268-765	JET 140	(1)d	(1)d	\$14.50
62	963-180	SPRING CLIP	1	1	\$10.50
63	851-071	SUPPORT 1/3	1a	1a	\$68.53
63	851-073	SUPPORT 2/4	1b	1b	\$68.53
64	240-761	SLOTTED HEAD SCREW M5x16	1	1	\$1.75
65	241-440	ADJUSTMENT SCREW M6x0.75	1	1	\$4.95
66	942-541	HEX. NUT M6x0.75 HEIGHT 3MM	3	3	\$0.99
67	861-640	BENT TUBE ASSEMBLY	1	1	\$39.95
68	256-035	AIR VENT LINE 120MM	1	1	\$12.95
69	963-010	SLEEVE	1	1	\$3.95
70	996-946	GASKET SET CARBURETOR	1j	1j	\$103.46
71	889-534	MAINTENANCE SET CARBURETOR	2kl	2kl	\$249.69

- Items not illustrated

- a For cylinder 1/3
- b For cylinder 2/4
- c Carburetor housing not available as spare part. use carburetor assy.;
- d Refer to service instruction SI-03-1998 current issue
- e With clearance for O-Ring (use only together with O-Ring Pos. 18 (part no. 950430));
- f For airbox part no. 867-758 / part no. 867-756  
See therefore SB-912-044
- g See therefore SI-912-012 / SI-914-014
- h Package including two floats
- i Special jetting according to instructions of the manufacturer
- j Contain parts requirement for 2 carburetors
- k Maintenance set for 1 carburetor
- l with rubber gasket