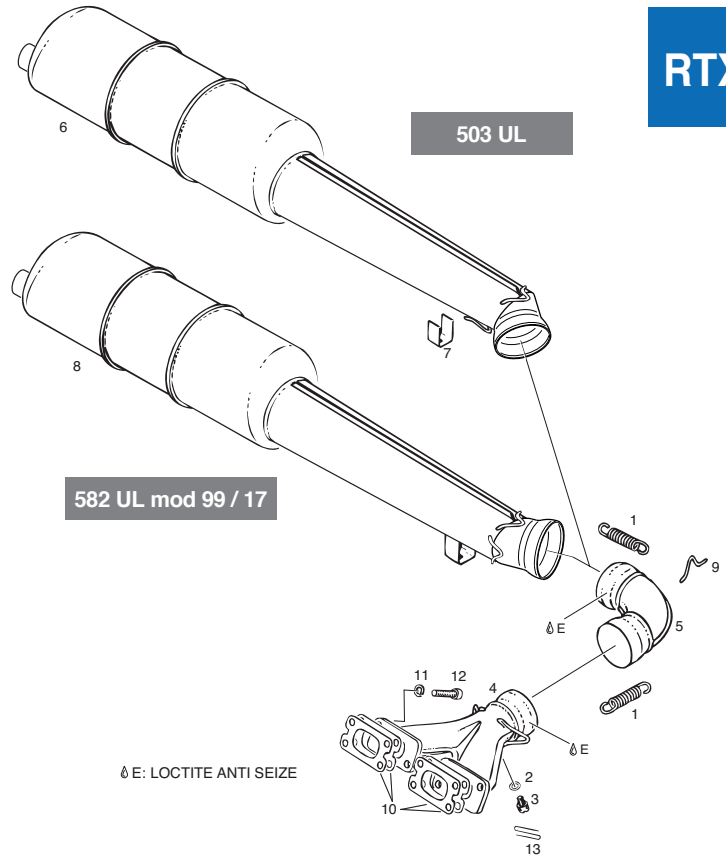


ROTAX 503, 582 UL 99/17 EXHAUST SYSTEM CONFIGURATION: STRAIGHT

| Item No. | Part No | Description | Qty. Req. | | Price |
|----------|----------|-----------------------------|-----------|--------|----------|
| | | | 503 UL | 582 UL | |
| 1 | 938-795 | SPRING 66 MM | 6 | | \$3.39 |
| 1 | 938-790 | RETURN SPRING | | 6 | \$7.85 |
| 2 | 950-141 | GASKET RING A 8X13 DIN 7603 | 2 | 2 | \$1.30 |
| 3 | 941-615 | CAPSTAN SCREW M8X1X10 | 2 | 2 | \$9.18 |
| 4 | 973-121 | EXHAUST MANIFOLD ASSEMBLY | | 1a | \$251.07 |
| 4 | 973-123 | EXHAUST MANIFOLD ASSEMBLY | | 1b | \$255.71 |
| 5 | 973-180 | CONNECTING ELBOW ASSEMBLY | 1a | 1a | \$161.85 |
| 5 | 973-182 | CONNECTING ELBOW ASSEMBLY | 1b | 1b | \$179.70 |
| 6 | 973-191 | MUFFLER ASSEMBLY | | 1b | \$497.80 |
| 7 | 951-150 | BRACKET | 2 | | \$11.84 |
| 8 | 973-192 | MUFFLER ASSEMBLY | | 1a | \$497.80 |
| 9 | 853-355 | HOOK | NB | NB | \$1.92 |
| 10 | 831-849 | GASKET 1.0 MM | 4 | | \$9.70 |
| 10 | 850-633 | GASKET | | 2c | \$12.66 |
| 11 | 945-752 | LOCK WASHER A8 | 4 | 6 | \$0.21 |
| 12 | 840-991 | ALLEN SCREW M8X30 | 4 | 6 | \$1.40 |
| 13 | 01-15725 | SAFETY WIRE .032 25 FT. | AR | AR | \$1.25 |

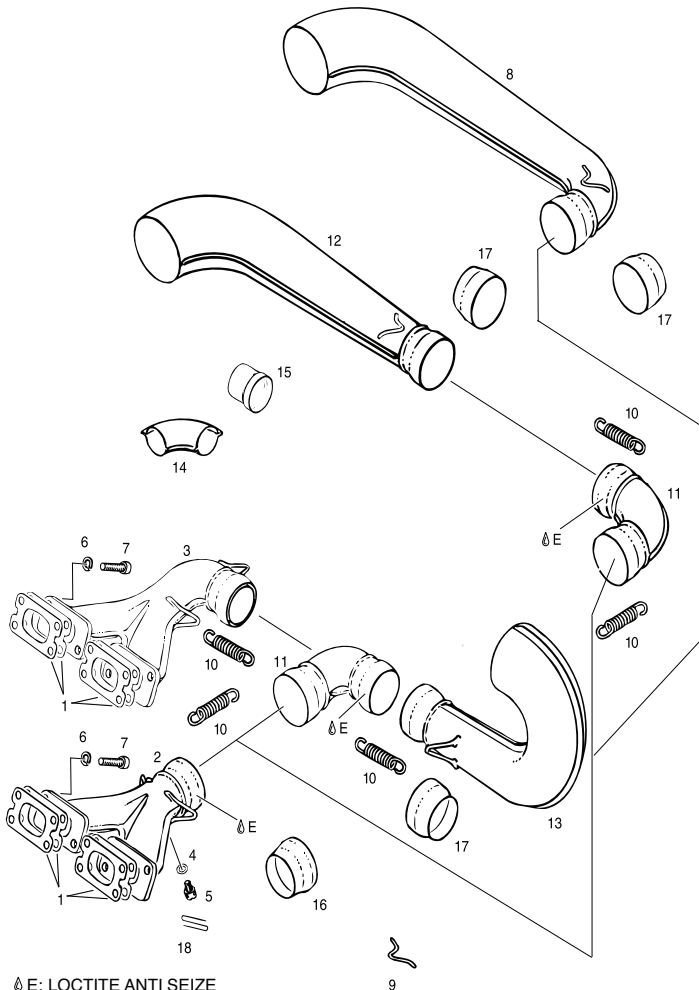
- a without hooks
- b with hooks
- c see SI-2ST-002



ROTAX 503, 582 UL 99/17 EXHAUST SYSTEMS SINGLE PARTS

| Item No. | Part No | Description | Qty. Req. | | Price |
|----------|----------|-----------------------------|-----------|--------|----------|
| | | | 503 UL | 582 UL | |
| 1 | 831-849 | GASKET 1,0 MM | 4 | | \$9.70 |
| 1 | 850-633 | GASKET | | 2f | \$12.66 |
| 2 | 973-121 | EXHAUST MANIFOLD ASSEMBLY | | 1a | \$251.07 |
| 2 | 973-123 | EXHAUST MANIFOLD ASSEMBLY | | 1b | \$255.71 |
| 4 | 950-141 | GASKET RING A 8X13 DIN 7603 | 2 | 2 | \$1.30 |
| 5 | 941-615 | CAPSTAN SCREW M8X1X10 | 2 | 2 | \$9.18 |
| 6 | 945-752 | LOCK WASHER A8 | 4 | 6 | \$0.21 |
| 7 | 840-991 | ALLEN SCREW M8X30 | 4 | 6 | \$1.40 |
| 8 | 973-546 | INLET CONE ASSEMBLY | 1b,g,h | | \$228.87 |
| 8 | 973-546 | INLET CONE ASSEMBLY | 1a,g,i | | \$228.87 |
| 9 | 853-355 | HOOK | NB | NB | \$1.92 |
| 10 | 938-795 | SPRING 66 MM | | NB | \$3.39 |
| 10 | 938-790 | RETURN SPRING | | NB | \$7.85 |
| 11 | 973-180 | CONNECTING ELBOW ASSEMBLY | 1a | 1a | \$161.85 |
| 11 | 973-182 | CONNECTING ELBOW ASSEMBLY | 1b | 1b | \$179.70 |
| 12 | 973-546 | INLET CONE ASSEMBLY | | 1b | \$228.87 |
| 13 | 973-544 | INLET CONE ASSEMBLY | | 1a | \$228.87 |
| 14 | 879-920 | OUTLET ELBOW ASSEMBLY | 1 | 1 | \$67.49 |
| 15 | 978-640 | OUTLET TUBE | 1c | 1c | \$22.91 |
| 16 | 878-660 | BALL JOINT | 1d | 1d | \$17.43 |
| 17 | 878-666 | BALL JOINT | 1e | 1e | \$17.68 |
| 18 | 01-15725 | SAFETY WIRE .032 25 FT. | | NB | \$1.25 |

- a without hooks
- b with hook
- c for configuration with clamped after muffler.
- d for exhaust manifold
- e for inlet cones
- f see also-SI-2ST-002
- g no longer in production
- h replaced by part no. 973-546 + 973-182
- i replaced by part no. 973-546 + 973-180, hooks have to be ordered separately



Δ E: LOCTITE ANTI SEIZE