

CESSNA PARTS

RUDDER AND ELEVATOR BUSHING KITS FOR CESSNA

These kits include two bushing sizes for each hinge location. This allows a selective fit and solves the common Cessna fit and interference problems. • Hardened corrosion resistant stainless steel. • Cessna models 120 thru 177 • All components are also available separately.

Model	Elevator Bushing Kit	Rudder Bushing Kit
120, 140, 140A (Bushing)	MC0422215	MC0431119K
150, 150A, B, C, D, E	EBC-KT-1	RBC-KT-1
150F, G, H, J	EBC-KT-1	RBC-KT-2
150K*, A150K* Eligibility Note 1 (150K S/N 15071129 THRU 15071621)		
A150K S/N A1500001 THRU A1500129	EBC-KT-1	RBC-KT-3
150K*, L, M, A150K*, L, M Eligibility Note 2 (150K S/N 15071622 THRU 15072003; A150K S/N A1500130 THRU A1500226)	EBC-KT-2	RBC-KT-3
A-150L, A-150L	EBC-KT-2	RBC-KT-3
F150F, G, H, J	EBC-KT-1	RBC-KT-2
F150K, L*, FA150K* Eligibility Note 3 (F150L S/N 15000659 THRU F1500699; FA150K S/N FA1500001 THRU FA1500039)	EBC-KT-1	RBC-KT-3
F150L*, M, FA150L*, L, M Eligibility Note 4 (F150L S/N 15000700 THRU F15001143; F150C S/N FA1500040 THRU FA1500081)	EBC-KT-2	RBC-KT-3
FBA150L, M	EBC-KT-2	RBC-KT-3
152*, A152* Eligibility Note 5 (152 S/N 15279406 THRU 15285833; A152 S/N A1520735 THRU A1521025)	EBC-KT-3	RBC-KT-3
152*, A152* Eligibility Note 6 (152 S/N 15285834 THRU 15286033; A152 S/N A1521026 THRU A1521049)	EBC-KT-4	RBC-KT-3
F152*, FA152* Note Eligibility Note 7 (F152 S/N 15201429 THRU F15201943; FA152 S/N FA1520337 THRU FA15203879)	EBC-KT-3	RBC-KT-3
F152*, FA152* Eligibility Note 8 (F152 S/N F1501944 THRU F15201980; FA152 S/N FA1520388 THRU FA1520425)	EBC-KT-4	RBC-KT-3
172, 175	EBC-KT-5	RBC-KT-4
172A, B, C* 175A, B, C* Eligibility Note 9 (172C S/N 17248735 THRU 17249085; 175C S/N 17557003 THRU 17557064)	EBC-KT-5	RBC-KT-5
172C*, 175C* Eligibility Note 10 (172C S/N 17249086 THRU 17249544; 175C S/N 17557065 THRU 17557119)	EBC-KT-5	RBC-KT-6
172D, E, F, G, H, I, K, L, M, N, P* Eligibility Note 11 (172P S/N 17274010 THRU 17275963)	EBC-KT-5	RBC-KT-6
172P*, Q, R, S Eligibility Note 12 (172P S/N 17275964 THRU 17276654)	EBC-KT-5	RBC-KT-7
172RG, P172D, R172K	EBC-KT-5	RBC-KT-6
F172D, E, F, G, H, K, L, M, N, P* Eligibility Note 13 (172P S/N F17202040 THRU F17202208)	EBC-KT-5	RBC-KT-6
F172P* Note Eligibility Note 14 (172P S/N F17202209 THRU F17202254)	EBC-KT-5	RBC-KT-7
F172, FR172E, F, G, H, J, K	EBC-KT-5	RBC-KT-6
177, 177A, B, 177RG, F177RG	-	MC0532104K

Unless otherwise noted, approval is for all serial numbers for each model listed. The eligibility for the kits also applies to the component bushings and bearings.

ELEVATOR BUSHING KIT COMPONENTS: 2 Bearings, 2 Bushings, 2 Bolts, 2 Washers, 2 Nuts, and 2 Pins.

EBC-KT-1	P/N 05-04576	\$34.65
EBC-KT-2	P/N 05-04577	\$37.85
EBC-KT-3	P/N 05-04578	\$36.50
EBC-KT-4	P/N 05-04579	\$69.75
EBC-KT-5	P/N 05-04580	\$72.75

RUDDER BUSHING KIT COMPONENTS: 2 Bearings, 2 Bushings, 2 Bolts, 2 Washers, 2 Nuts, and 2 Pins.

RBC-KT-1	P/N 05-04569	\$18.50
RBC-KT-2	P/N 05-04570	\$56.75
RBC-KT-3	P/N 05-04571	\$55.75
RBC-KT-4	P/N 05-04572	\$35.55
RBC-KT-5	P/N 05-04573	\$55.75

RBC-KT-6	P/N 05-04574	\$55.80
RBC-KT-7	P/N 05-04575	\$52.99

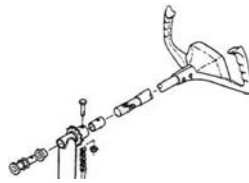
ELEVATOR & RUDDER HINGE BEARING TOOL

This unique tool is specifically designed to prevent damage when installing or removing sintered bronze elevator and rudder hinge bearings in Cessna aircraft. Seven piece kit for common bearing sizes. Heat treated stainless steel will last a lifetime. Kit comes in a convenient storage pouch. P/N 05-04869 \$79.75

CESSNA ROD ENDS

Description	Part Number	Price
Cessna Rod End S1105-4	06-00685	\$52.75
Cessna Rod End S1819-3	05-01819-3	\$45.50

CESSNA YOKE UNIVERSAL JOINT AND PROTECTIVE SLEEVE



replacement.

A universal joint attaches to each control yoke shaft behind the instrument panel. Slack or roughness in control yoke motion commonly indicates excess universal joint wear or corrosion that may necessitate

CESSNA CONTROL YOKE UNIVERSAL JOINT FAA-PMA



may necessitate replacement. Cessna models 120 thru 185

MC0411257 - A universal joint attaches to each control yoke shaft behind the instrument panel. Slack or roughness in control yoke motion commonly indicates excess universal joint wear or corrosion that may necessitate replacement. Restores safe, responsive control. P/N 05-04558 \$264.95

CESSNA UNIVERSAL JOINT KIT



UJC-KT-2 - A universal joint attaches to each control yoke shaft behind the instrument panel. Slack or roughness in control yoke motion commonly indicates excess universal joint wear or corrosion that may necessitate replacement.

Kit Contents		
Part Number	Description	Qty
AN3-10A	BOLT	2
AN3-11A	BOLT	2
MC0411257	UNIVERSAL JOINT, Control Yoke	1
MS21044N3	NUT, Lock Nylon, 10-32	2

P/N 05-04561 \$262.95

SLEEVE, PIN RETENTION FAA-PMA



MC6183 - A universal joint attaches to each control yoke shaft behind the instrument panel. Slack or roughness in control yoke motion commonly indicates excess universal joint wear or corrosion that may necessitate replacement. The universal joints and the sleeve are available separately or together in the kit UJC-KT-1 for Cessna models 150 thru A185. Each convenient kit also includes installation hardware. P/N 05-04559 \$7.50

BLUE SKY LATCH FOR CESSNAS



Install it right on the plane. Simply drill out the two rivets holding your old latch system on your door. You will use these two same holes to install the Blue Sky Latch. The latch is made from TPE (thermal plastic rubber), it has excellent weather ability, and stands up to extreme temperatures. Next use a hack saw blade and cut off that point on your door stem. Then use a small hammer and tap the strike on the end. Align your door using the phillips head adjustment on your door stem. You're done. The Thermal plastic rubber acts a bumper as well as a latch. You get all the hardware including structural AN screws and elastic stop nuts in the kit. Step by Step installation guide with photos showing how easy it is to install. C150 & 152 P/N 05-04563 \$39.95

FLAP ROLLER INSTALL TOOL 970



Makes installation of the aft flap roller, bushing and washers easy. Holds parts in alignment while inserting the bolt. Long handle allows access through the small inspection openings. Cessna 150 thru 210. P/N 05-04764 \$41.50



CESSNA 182 GROSS WEIGHT INCREASE STC

A Supplemental Type Certificate (STC) that will increase the useful load of a Cessna 182P or 182Q by 150 to 160 pounds, and the ramp weight (in most cases) by 160 pounds. This STC requires no parts, no modifications, and no installation labor costs. P/N 05-04889 \$750.00

AP