

# STRATOFLEX HOSE & FITTINGS



## STRATOFLEX 111 HOSE

Part No	Tube O.D.	Hose ID.	Max Press	Wt Per lb./in.	Price Per Ft.
111-4	.250	.188	3000	.0120	\$10.85
111-5	.312	.250	3000	.0130	\$12.65
111-6	.375	.312	2000	.0190	\$12.60
111-8	.500	.406	2000	.0220	\$13.65
111-10	.625	.500	1750	.0310	\$13.55
111-12	.750	.625	1500	.0380	\$17.65
111-16	1.00	.875	800	.0368	\$20.85

## STRATOFLEX 300 STRAIGHT FLARED FITTINGS FOR 111 HOSE



Part No.	Tube O.D.	Thread	Price Ea.
300-3S	.188	3/8-24	\$31.70
300-4S	.200	7/16-20	\$25.50
300-5S	.312	1/2-20	\$36.70
300-6S	.375	9/16-18	\$33.50
300-8D	.500	3/4-16	\$37.95
300-10D	.625	7/8-14	\$56.95
300-12D	.750	1-1/16-12	\$65.75
300-16D	1.00	1-5/16-12	\$85.75

## STRATOFLEX 124 HOSE



Description	Part No.	Price
124-3 Hose	124-3	\$15.90
124-4 Hose	124-4	\$14.50
124-6 Hose	124-6	\$17.75
124-8 HOSE	124-8	\$22.95
124-10 Hose	124-10	\$14.95

## STRATOFLEX 156 MEDIUM PRESSURE HOSE



Part No	Tube O.D.	Hose ID.	Max Press	Mini Blend	Price/Ft.
156-3	.188	.156	1500	1.75	\$18.90
156-4	.250	.219	1500	2.00	\$19.80
156-5	.312	.281	1500	2.25	\$20.50
156-6	.375	.344	1500	2.50	\$21.50
156-8	.500	.438	1250	3.50	\$23.85
156-10	.625	.562	1250	4.00	\$26.99
156-12	.750	.688	1250	4.50	\$30.50
156-16	1.000	.875	1000	5.50	\$35.50

## STRATOFLEX 678 45° ELBOW FLARED FITTINGS FOR 156 HOSE



Part No.	Tube O.D.	Thread	Price Ea.
678-3S	.188	3/8-24	\$131.80
678-4S	.250	7/16-20	\$130.75
678-6D	.375	9/16-18	\$202.95
678-8D	.500	3/4-16	\$199.75
678-10D	.625	7/8-14	\$210.95
678-12D	.750	1-1/16-12	\$202.95



## STRATOFLEX 193 HOSE

Specifications: Hose meets or exceeds the requirements of MIL-H-5593. Construction: Tube - Seamless Buna - N. Reinforcement - One braid of high tensile fiber cord. Cover - Synthetic rubber. Identification: LP-MIL-H-5593-size, date of manufacture, manufacturer's code (CAGE) marked on one side of the hose. Stratoflex 193-size marked on other side of hose. Yellow markings are repeated every 12 inches. Application: Low pressure air and vacuum instrument systems. Vacuum service 20"Hg sizes -2 thru -6; 10"Hg sizes -8 and -10. Temperature range: -65 to +165°F / (-54 to +74°C).

Part No	Tube O.D.	Hose ID.	Max Press	Weight per In. (l.b.)	Price Per Ft.
193-2	.35	.125	300	.0038	\$8.50
193-3	.41	.188	250	.0050	\$4.85
193-4	.48	.250	200	.0058	\$4.70
193-6	.60	.375	150	.0079	\$5.45
193-8	.75	.500	150	.0015	\$8.65
193-10	.87	.625	150	.0138	\$9.90

## STRATOFLEX FIRESLEEVE END DIP



Stratoflex 5027 Room temperature curing cement for Stratoflex Firesleeve. To use, dip each end of firesleeve in accordance with P-104-29 and applicable drawing. Always use current specifications.

P/N 5027 .....\$151.85

## STRATOFLEX 646/640 45° ELBOW FLARED FITTINGS FOR 111 HOSE



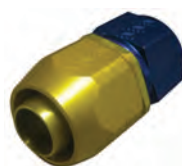
Part No	Tube O.D.	Thread	Price Ea.
646-4S	.250	7/16-20	\$136.95
646-6S	.375	9/16-18	\$186.75
646-8D	.500	3/4-16	\$223.95
646-10D	.625	7/8-14	\$254.95
640-12D	.750	1-1/16-12	\$311.00
640-16D	1.00	1-5/16-12	\$336.00

## STRATOFLEX 649/643 90° ELBOW FLARED FITTINGS FOR 111 HOSE



Part No.	Tube O.D.	Thread	Price Ea.
649-4S	.250	7/16-20	\$141.85
649-6S	.375	9/16-18	\$215.95
649-8D	.500	3/4-16	\$191.75
649-10D	.625	7/8-14	\$242.95
649-12D	.750	1-1/16-12	\$188.85

## STRATOFLEX 676 STRAIGHT FLARED FITTINGS FOR 156 HOSE



Part No.	Tube O.D.	Thread	Price Ea.
676-3S	.188	3/8-24	\$48.50
676-4S	.250	7/16-20	\$47.50
676-5S	.312	1/2-20	\$93.75
676-6D	.375	9/16-18	\$39.50
676-8D	.500	3/4-16	\$40.75
676-10D	.625	7/8-14	\$54.80
676-12D	.750	1-1/16-12	\$63.75
676-16D	1.000	1-5/16-12	\$87.75

## STRATOFLEX 680 90° ELBOW FLARED FITTINGS FOR 156 HOSE



Part No.	Tube O.D.	Thread	Price Ea.
680-3S	.188	3/8-24	\$221.95
680-4S	.250	7/16-20	\$109.75
680-5S	.312	1/2-20	\$232.95
680-6D	.375	9/16-18	\$210.95
680-8D	.500	3/4-16	\$167.95
680-10D	.625	7/8-14	\$166.75
680-12D	.750	1 1/16-12	\$187.85
680-16D	1.000	1 5/16-12	\$243.95

## STRATOFLEX 311 STRAIGHT FLARED FITTING FOR 193 HOSE



Part No.	Tube O.D.	Thread	Price Ea.
311-2D	.125	5/16-24	\$34.50
311-3D	.188	3/8-24	\$24.50
311-4D	.250	7/16-20	\$19.55
311-6D	.375	9/16-18	\$34.50
311-8D	.500	3/4-16	\$66.85
311-10D	.625	7/8-14	\$142.75

## STRATOFLEX 2650 FIRESLEEVE



Part No.	Use With Hose No.	*10781-4 Clamp	Price Per Ft.
2650-6	-4	-	-
2650-8	-6	-3	-4
2650-9	-4	-	-5
2650-10	-8	-4	-6
2650-11	-6	-	-
2650-12	-10	-5,-6	-8
2650-13	-8	-8	-
2650-14	-12	-	-
2650-16	-10	-10	-10
2650-18	-	-	-12
2650-20	-16	-	-12
2650-22	-	-	-16

## STRATOFLEX FLARED HOSE ASSEMBLIES

Call for quote on Stratoflex 111, 156, 193 and 124 PTFE flared hose assemblies. Our hose assemblies are competitively priced and available for immediate shipment.

## GENERAL AVIATION STRATOFLEX HOSE ASSEMBLIES

Parker Stratoflex hose assemblies can be purchased by aircraft make, model, serial number and system, and also for custom applications. Aircraft Spruce's Supplier is an FAA approved hose assembly fabricator of Parker Stratoflex products with a certified hose shop for fabricating to specification. These include hoses for manifold pressure, master cylinders, controls, coolers, fuel pumps, fuel lines, carburetors, landing gears, gascolators, brake lines, engine hoses, dehydrators, strainers, turbochargers, vacuum lines, oil lines, and more.

SEE GENERAL AVIATION STRATOFLEX HOSE ASSEMBLIES AT [WWW.AIRCRAFTSPRUCE.COM](http://WWW.AIRCRAFTSPRUCE.COM)