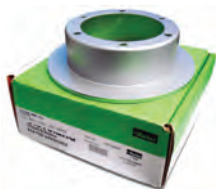


CLEVELAND BRAKE DISCS

CLEVELAND BRAKE DISCS



If your aircraft is flown a lot (more than 200 hours a year) and is not exposed to exceptionally corrosive atmospheres, Cleveland Standard discs are the ideal replacement when normal brake wear requires it.

Cleveland Chrome brake discs are the answer for owners of aircraft that are exposed to the elements (moisture, salt, industrial chemicals) and are not flown frequently enough to rub off corrosion. If you fly less than 200 hours a year, your aircraft spends more than 8,500 idle hours exposed to the elements. Standard and Chrome Cleveland brake discs are fully FAA approved as replacements on virtually all popular single engine aircraft.

Aircraft Model	Main Wheel Ass'y	Standard Disc	Price Each	Chrome Disc	Price Each
Homebuilts	500x5 40-78B	164-17	\$173.75	164-117	\$385.00
Homebuilts	600x6 40-59A	164-75	\$245.95	164-175	\$773.00
General (High Energy)	40-151A	164-08500	\$222.95	---	---
General (Increased Energy)	40-230	164-09900	\$239.85	---	---
Aerotek (Pitts) S-1 Series, S-2A	500x5 40-78B	164-17	\$173.75	164-117	\$385.00
Bonanza F33A, F33C, A36, A36TC, B36TC	600x6 40-83A, 40-83B	164-02505	\$216.95	164-125B	\$1,121.00
Bellanca Citabria, Decathlon	600x6 40-28D	164-5	\$195.85	164-105	\$721.00
Bellanca Champ	600x6 40-78B	164-17	\$173.75	164-117	\$385.00
Viking 300A	600x6 40-75E	164-15A	\$220.95	164-115A	\$374.00
Cessna 150C	600x6 40-57	164-5	\$195.85	164-105	\$721.00
Cessna 150D,E	500x5 40-78	164-17	\$173.75	164-117	\$385.00
Cessna 150F,G,H,J	600x6 40-97A	164-26A	\$159.75	164-126A	\$362.00
Cessna 150K	600x6 40-97A	164-26A	\$159.75	164-126A	\$362.00
Cessna A150K, F150, FA150	600x6 40-113	164-40	\$149.75	164-140	\$348.00
Cessna 152, F152, FA152	600x6 40-113	164-40	\$149.75	164-140	\$348.00
Cessna 172	600x6 40-97A	164-26A	\$159.75	164-126A	\$362.00
Cessna 172	600x6 40-113	164-40	\$149.75	164-140	\$348.00
Cessna 177,177RG, F177RG	600x6 40-113	164-40	\$149.75	164-140	\$348.00
Cessna 177A, B	600x6 40-97A	164-26A	\$159.75	164-126A	\$362.00
Cessna 180	600x6 40-75B	164-15A	\$220.95	164-115A	\$374.00
Cessna 180	600x6 40-75D	164-63	---	164-163	---
Cessna 180H, J, K, L, M, N	600x6 40-66	164-7	\$272.95	164-107	\$522.00
Cessna 182N	600x6 40-97A	164-26A	\$159.75	164-126A	\$362.00
Cessna 182J, K, L, N,	600x6 40-113	164-40	\$149.75	164-140	\$348.00
Cessna 185, A, B	600x6 40-97A	164-26A	\$159.75	164-126A	\$362.00
Cessna 185, A, B	600x6 40-32	164-7	\$272.95	164-107	\$522.00
Cessna 185C, D, E	600x6 40-66	164-7	\$272.95	164-107	\$522.00
Cessna 185C, D, E	600x6 40-75B	164-15A	\$220.95	164-115A	\$374.00
Cessna A185E 1966 & Up	600x6 40-75B	164-15A	\$220.95	164-115A	\$374.00
1969 & Up	600x6 40-75D	164-36	\$237.95	164-136	\$426.00
1967, 1968	600x6 40-66	164-7	\$272.95	164-107	\$522.00
Cessna 188, A188	600x6 40-75B	164-15A	\$220.95	164-115A	\$374.00
Cessna 205, 205A	600x6 40-67	164-7	\$272.95	164-107	\$522.00
Cessna 205, 205A	600x6 40-75B	164-15A	\$220.95	164-115A	\$374.00
Cessna 206, U206A, TU206A & Turbo	600x6 40-75	164-15A	\$220.95	164-115A	\$374.00
Cessna U206D, D & Turbo	600x6 40-75D	164-36	\$237.95	164-136	\$426.00
Cessna P206, A, TP206A	600x6 40-75	164-15A	\$220.95	164-115A	\$374.00
Cessna P206, A, B, C, D, & Turbo	600x6 40-75B	164-15A	\$220.95	164-115A	\$374.00
Cessna P206D, E, Turbo & Super Skylane	600x6 40-75D	164-36	\$237.95	164-136	\$426.00
Cessna 207, T207	660x6 40-75B	164-15A	\$220.95	164-115A	\$374.00
Cessna 207, T207	600x6 40-75D	164-36	\$237.95	164-136	\$426.00

Aircraft Model	Main Wheel Ass'y	Standard Disc	Price Each	Chrome Disc	Price Each
Cessna Caravan 1, & 208B	40-179	164-22201	\$355.00	---	---
Cessna 210C	600x6 40-21	164-9	\$239.95	164-109	\$444.00
Cessna 210 series P210, T210	600x6 40-75B	164-15A	\$220.95	164-115A	\$374.00
Cessna 210N, P210N	600x6 40-75B	164-15A	\$220.95	164-115A	\$374.00
Cessna 336 Series	600x6 40-67	164-7	\$272.95	164-107	\$522.00
1963-1965	600x6 40-75B	164-15A	\$220.95	164-115A	\$374.00
Gulfstream AA-1, A, B, AA-5,	600x6 40-86A	164-20	\$177.75	164-120	\$438.00
Gulfstream AA-1, A, B, AA-5, AA-5B, TR2	600x6 40-88C	164-20	\$177.75	164-120	\$438.00
Helio H-295, 395,	600x6 40-75E	164-15A	\$220.95	164-115A	\$374.00
391	600x6 40-75D	164-36	\$237.95	164-136	\$426.00
Maule M4, M5 Series	600x6 40-97D	164-26A	\$159.75	164-126A	\$362.00
Mooney M20A, M20B	600x6 40-24	164-9	\$239.95	164-109	\$444.00
Mooney 20C	600x6 40-86	164-20	\$177.75	164-120	\$438.00
Mooney 20D, E	600x6 40-24	164-9	\$239.95	164-109	\$444.00
Mooney 20D, F, G, J, K	600x6 40-86	164-20	\$177.75	164-120	\$438.00
Piper PA22-108	600x6 40-28	164-5	\$195.85	164-105	\$721.00
Piper PA24-180,250	600x6 40-58	164-9	\$239.95	164-109	\$444.00
Piper PA24-260	600x6 40-84	164-19	\$208.95	164-119	\$613.00
Piper PA-24, 30, 32, 34, 39	600x6 40-90	164-22A	\$222.95	---	---
Piper PA25	600x6 40-84A	164-33	\$276.95	164-133	\$1,375.00
Piper PA28 Series Cherokee/ Warrior	600x6 40-28	164-20	\$177.75	164-120	\$52.90
Piper PA32 Series	600x6 40-120C (1)	164-21600	\$198.80	---	---
Piper PA32 Series	600x6 40-90A	164-23	\$219.00	164-123	\$617.00
Piper P34 Series	600x6 40-90A	164-23	\$219.00	164-123	\$617.00
Piper PA38-112	500x5 40-78B	164-17	\$173.75	164-117	\$385.00
Piper PA44	600x6 40-90A	164-23	\$219.00	164-123	\$617.00
(1) Heavy duty	600x6 40-120(1)	164-21600	\$198.80	---	---
Archer	600x6 40-86	164-20	\$177.75	164-120	\$438.00
Pathfinder	600x6 40-86B	164-20	\$177.75	164-120	\$438.00
Cherokee	600x6 40-58	164-9	\$239.95	164-109	\$444.00
Cherokee/Arrow	600x6 40-84	164-19	\$208.95	164-119	\$613.00
Dakota	600x6 40-86	164-20	\$177.75	164-120	\$438.00
Dakota	600x6 40-86B	164-20	\$177.75	164-120	\$438.00
Rockwell Int. 112, 112A, B	600x6 40-113A	164-43	\$275.95	164-143	\$1,011.00
112B, TC, TCA114	600x6 40-75H	164-15A	\$220.95	164-115A	\$374.00
Schweizer SGS1-34	500x5 40-78B	164-17	\$173.75	164-117	\$385.00
Socata TBM 700/850	8" Int. Brake	159-02700	\$1,277.00	---	---
Spencer Amph. S12E	600x6 40-74	164-7	\$272.95	164-107	\$522.00
Taylorcraft F-19	600x6 40-86	164-20	\$177.75	164-120	\$438.00
Yargo 2150A	600x6 40-97E	164-26A	\$159.75	164-126A	\$362.00
Waco	600x6 40-97A	164-26A	\$159.75	164-126A	\$362.00
Wing Derringer	600x6 40-84	164-19	\$208.95	164-119	\$613.00



REPLACEMENT DISCS & LININGS FOR CESSNA/MCCAULEY WHEELS & BRAKES

Cessna Aircraft Model	Cessna/McCauley Wheel Assembly	Cessna/McCauley Brake Disc Assy.	Cleveland Brake Disc Assy.	Price
150, 150A	C163004-0104 C163003-0101 or C163001-0102 C163002-0101	B-30440	164-09200	\$220.95
		B-30195	164-09300	\$186.00
		B-30007	164-09400	-----
152, A152, F152, FA152	C163005-0101 or C163006-0101	-----	-----	-----
		C30615-1	164-08800	\$150.75
172, F172, R172, FR172	C163004-0104 C163003-0101 or C163003-0102 or C163004-0104 C163002-0101	B-30440	164-09200	\$220.95
		-----	-----	-----
		B-30195	164-09300	\$186.00
		B-30007	164-09400	-----
172, F172, 172RG	C163006-0101	C30615-1	164-08800	\$150.75
177	C163005-0101	C30615-1	164-08800	\$150.75
177RG	C163005-0101 or C163006-0101	-----	-----	-----
		C30615-1	164-08800	\$150.75

Cessna Aircraft Model	Cessna/McCauley Wheel Assembly	Cessna/McCauley Brake Disc Assy.	Cleveland Brake Disc Assy.	Price	
180, 185	C163004-0103	-----	-----	-----	
		C163004-0101	C30388	164-09700	\$218.95
		C163006-0103 Std.	C30615-3	164-9	\$239.95
		C163006-0102 HD	C30615-2	164-08900	\$232.95
182, F182	C163006-0101 or C163006-0103	-----	-----	-----	
		C30615-1	164-08800	\$150.75	
R182, FR182, TR 182	C163006-0103	C30615-3	164-9	\$239.95	
		C163004-0102	C30398	164-09600	\$236.95
U206-TU206	C163004-0101	C30388	164-09700	\$218.95	
		C163006-0103 Std.	C30615-3	164-9	\$239.95
		C163006-0102 HD	C30615-2	164-08900	\$232.95
210, T210, P210	C163006-0103	C30398	164-09600	\$236.95	
		C30615-3	164-9	\$239.95	

CLEVELAND BRAKE DISCS

Model No.	Part No.	Price	Model No.	Part No.	Price
159-01200	06-02563	\$1,113.00	159-02700	06-02796	\$1,277.00
159-03500	05-11628	\$1,195.00	159-02900	05-14401	\$1,247.00
159-07100	159-07100	\$1,769.00	164-02201	164-22A	\$222.95
164-20900	06-01843	\$445.00	164-22201	06-01146	\$355.00
164-22400	06-01850	\$747.00	164-05806	06-01819	\$696.00