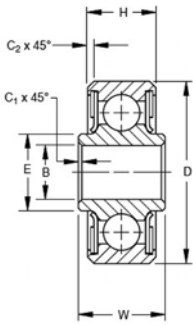


BEARINGS

KP SERIES—AN200 / MS27640

Single row, ball, heavy duty. PTFE seals and CRES sealcaps. Exposed surfaces except bore, caps, and seals are cadmium plated. Prelubricated for life. Also offered with CRES 440C material and/or zinc nickel plating per OEM specifications

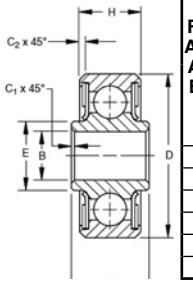


FAFNIR AND MS AFBMA Bearing No.	Bore 27640	B		D		W		H		A		E		C		Balls		Pure Moment Rating Inch	Moment Constant 1 Lbs.	Weight Pounds Inch (Approx.)	Price Each
		Dia +.0000 - .0005 (in.)	Outside Inner Ring +.0000 - .0005 (in.)	Width Outer Ring +.000 - .005 (in.)	Width Inner Ring +.000 - .005 (in.)	Shoulder Width Bore Ring (Approx.) (in.)	Inner Ring O. D. +.015 - .000 (in.)	Outer Ring +.015 - .000 (in.)	Inner Ring O. D. +.015 - .000 (in.)	Outer Ring +.015 - .000 (in.)	No.	Size									
KP3L*	-3A	.1900	.6250	.245	.203	.280	.005	.010				10	5/32"	51.8	12.08	.01	\$38.99				
KP3	-3	.1900	.7774	.297	.270	.331	.005	.022				12	5/32"	93.7	10.13	.03	\$24.70				
	-4	.2500	.9014	.484	.335	.390	.005	.032				11	1/4"	130	8.84	.04	\$27.50				
KP5	-5	.3125	1.2500	.558	.375	.469	.015	.032				9	5/16"	335	6.77	.09	\$35.75				
KP6	-6	.3750	1.4375	.620	.469	.591	.015	.032				10	11/32"	580	5.44	.15	\$22.50				
KP8	-8	.5000	1.6875	.620	.500	.768	.015	.044				10	11/32"	1060	4.46	.21	\$35.50				

* Stainless steel shield (for "Plya-Seals" use KP3A which has same bore and O.D.) Equiv. Thrust Load = Thrust + .8 Radial Load + Moment Constant x Moment in Inch Lbs.

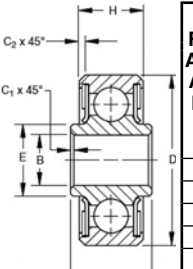
KP-A SERIES—AN201 / MS27641

Single row, ball, deep groove, medium duty. PTFE seals and CRES sealcaps. Exposed surfaces except bore, caps, and seals are cadmium plated. Prelubricated for life. Also offered with CRES 440C material and/or zinc nickel plating per OEM specifications



FAFNIR AND MS AFBMA Bearing No.	Bore 27641	B		D		W		H		A		E		C		Balls		Max Static Non-Brinell Rating		Pure Moment Rating Inch-Lbs.	Moment Constant 1 Inch	Weight Pounds (Approx)	Price Each
		Dia +.0000 - .0005 (in.)	Outside Inner Ring +.0000 - .0005 (in.)	Width Outer Ring +.000 - .005 (in.)	Width Inner Ring +.000 - .005 (in.)	Shoulder Dia. Bore Ring (Approx.) (in.)	Inner Ring O. D. +.015 - .000 (in.)	Outer Ring +.015 - .000 (in.)	Inner Ring O. D. +.015 - .000 (in.)	Outer Ring +.015 - .000 (in.)	No.	Size	Radial Lbs.	Thrust Lbs.									
KP3A	3	.1900	.6250	.297	.234	.297	.005	.016				10	1/8"	800	600	51.8	12.08	.01	\$25.50				
KP4A	4	.2500	.7500	.281	.219	.380	.005	.016				12	1/8"	1100	900	73.8	10.17	.02	\$13.90				
KP5A	5	.3125	.8125	.297	.234	.415	.015	.016				14	1/8"	1300	1000	100	8.76	.02	\$18.55				
KP6A	6	.3750	.8750	.313	.250	.495	.015	.016				16	1/8"	1400	1100	130	7.68	.03	\$14.55				
KP8A	8	.5000	1.1250	.375	.313	.616	.015	.016				16	5/32"	2200	1700	250	6.14	.05	\$32.65				
EW1/2	NORMA	.5040	.9690	.250	.250																	---	

KS SERIES—MS27645

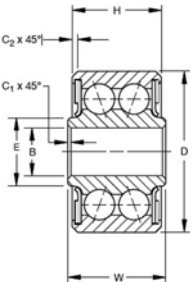


FAFNIR AND MS AFBMA Bearing No.	Bore 27645	B		D		W		H		A		E		C		F	Balls		Maximum Static Rating		Weight Pounds (Approx)	Price Each
		Diameter +.0000 - .0005 (in.)	Outside Inner Ring +.0000 - .0005 (in.)	Width Outer Ring +.000 - .005 (in.)	Width Inner Ring +.000 - .005 (in.)	Shoulder Width Bore Ring (Approx.) (in.)	Inner Ring O. D. +.015 - .000 (in.)	Outer Ring +.015 - .000 (in.)	Inner Ring O. D. +.015 - .000 (in.)	Outer Ring +.015 - .000 (in.)	No.	Size	Radial Lbs.	Thrust Lbs.								
KSP3L	3A	.1900	.6250	.245	.203	.257	.005	.016									13	3/32"	400	100	.01	\$22.50
KSP3	3	.1900	.7774	.297	.270	.342	.005	.022				.275	12	1/8"	800	200	.03	\$26.75				
KSP4	4	.2500	.9014	.484	.335	.400	.005	.032				.408	12	5/32"	1100	300	.04	\$28.50				
KSP5	5	.3125	1.2500	.558	.375	.562	.015	.032				.408	13	3/16"	1400	300	.10	\$38.70				
*KS6A	6A	.3750	.8750	.313	.250	.475	.016	.016				.277	15	1/8"	1000	200	.03	\$29.75				

* NOTE: These bearings are self-aligning for 10° in either direction except for KS6A (not AN200) which is self-aligning for 8° in either direction.

DP SERIES—AN207 / MS27644

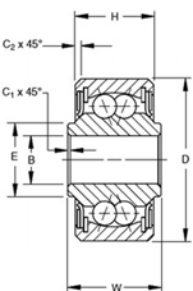
Double row, ball, light and heavy duty. PTFE seals and CRES sealcaps. Exposed surfaces except bore, caps and seals are cadmium plated. Prelubricated for life. For use where high moment rigidity is required, DPP-W series only. Also offered with CRES 440C material and/or zinc nickel plating per OEM specifications



FAFNIR Bearing No.	MS 27644	B		D		W		H		A		E		C		Balls		Maximum Static Non-Brinell		Weight Pounds (Approx.)	Price Each
		Bore +.0000 - .0005 (in.)	Dia. +.0000 - .005 (in.)	Outside Inner Ring +.000 - .005 (in.)	Width Outer Ring +.000 - .005 (in.)	Width Inner Ring +.000 (Approx.) (in.)	Shoulder Width Inner Ring (Approx.) (in.)	Inner Ring O. D. +.015 - .000 (in.)	Outer Ring +.015 - .000 (in.)	No.	Size	Radial Lbs.	Thrust Lbs.								
DPP3	-3	.1900	.7774	.495	.473	.302	.005	.02				20	5/32"	2500	1700	.04	\$49.50				
DPP4	-4	.2500	.9014	.620	.491	.410	.005	.032				22	5/32"	3000	1800	.06	\$39.50				
DPP5	-5	.3125	1.2500	.745	.687	.469	.015	.032				20	1/4"	6900	4200	.17	\$63.50				
DPP6	-6	.3750	1.4375	.870	.794	.551	.015	.032				18	5/16"	9700	5800	.26	---				
DPP8	-8	.5000	1.6875	.932	.856	.735	.015	.044				20	11/32"	13000	7800	.38	---				

DSP SERIES—AN206 / MS27643

Double row, ball, self-aligning, heavy duty. PTFE seals and CRES sealcaps. Exposed surfaces except bore, caps, and seals are cadmium plated. Prelubricated for life. Also offered with CRES 440C material and/or zinc nickel plating per OEM specifications



FAFNIR Bearing No.	MS 27643	B		D		W		H		A		E		C		Balls		Maximum Static Non-Brinell		Weight Pounds (Approx.)	Price Each
		Bore +.0000 - .0005 (in.)	Dia. +.0000 - .005 (in.)	Outside Inner Ring +.000 - .005 (in.)	Width Outer Ring +.000 - .005 (in.)	Width Inner Ring +.000 (Approx.) (in.)	Shoulder Width Inner Ring (Approx.) (in.)	Inner Ring O. D. +.015 - .000 In.	Outer Ring +.015 - .000 In.	No.	Size	Radial Lbs.	Thrust Lbs.								
DSP3	-3	.1900	.7774	.500	.392	.304	.005	.022				24	1/8"	1420	200	.04	\$37.85				
DSP4	-4	.2500	.9014	.687	.464	.430	.005	.032				30	1/8"	1780	300	.06	\$45.65				
DSP5	-5	.3125	1.2500	.812	.656	.515	.015	.032				28	3/16"	3740	600	.16	\$43.90				
DSP6	-6	.3750	1.4375	.937	.750	.564	.015	.032				28	7/32"	5100	800	.24	\$72.75				
DSP8	-8	.5000	1.6875	1.000	.812	.775	.015	.044				30	1/4"	7120	1000	.36	\$178.65				