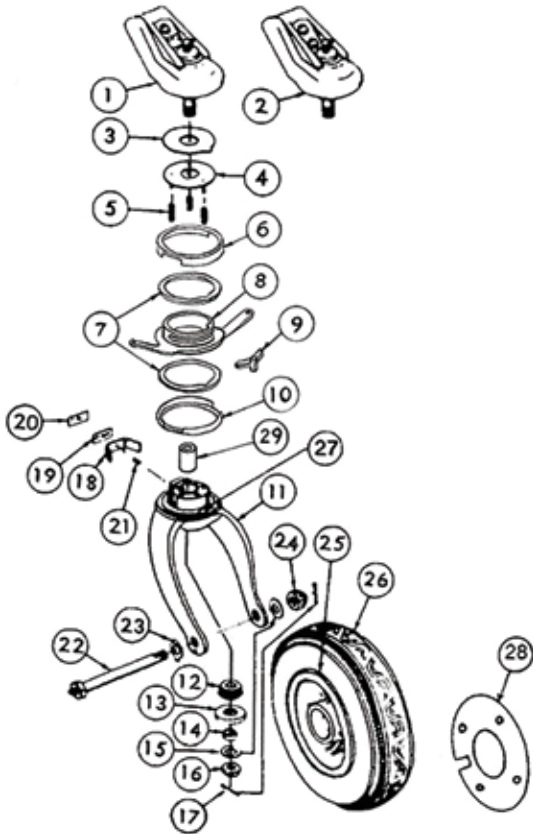


# TAILWHEELS

## REPLACEMENT PARTS FOR SCOTT 3200 TAILWHEEL

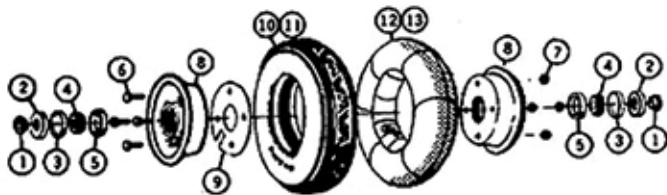
The Scott Model 3200 tailwheel, with 8" pneumatic tire, is designed to give years of trouble-free service. The swivel mechanism is sealed to keep out water, sand and mud. Grease fittings are provided for lubrication. Bracket fits 1-3/4" wide tailwheel leaf spring. Wt. 7-1/2 lbs. Attaching hardware not furnished.



Item No.	Description	No Req'd	Part No.	Price
2	Bracket Assembly ABI-800613	1	06-01291	\$458.00
3	Washer, Thrust	1	3207	\$6.50
4	Thrust Plate Ass'y	1	3234	\$37.95
5	Spring, Compression	5	3233	\$4.45
6	Dust Cap	1	3235-2	\$34.50
7	Washer, Thrust	2	3206	\$17.80
8	Arm Assembly	1	3214	\$279.85
9	Pawl	1	3219	\$36.50
10	Dust Cap	1	3235-1	\$34.50
11	Fork Assembly, ABI-3244K	1	06-00736	\$412.00
12	Cone Bearing	1	13286	\$66.75
13	Retainer, Grease	1	1863	\$11.50
14	Spacer	1	2504-1	\$19.90
15	Washer, AN960-816	2	AN960-816	\$0.07
16	Nut, Shear AN320-8	1	AN320-8	\$2.27
17	Pin, Cotter	2	18482	\$0.03
18	Spring	1	3222	\$12.50
19	Spacer	1	3258	\$3.45
20	Spacer	1	3258-1	\$3.35
21	Pin	1	3257	\$10.75
22	Axle Ass'y	1	3236	\$52.90
23	Washer, Lock	1	3225	\$8.95
24	Nut, Castle, AN310-8	1	AN310-8	\$3.35
25	Wheel Assembly, ABI-3244-00	1	06-00745	\$179.65
27	Pin, 3226	1	3226	\$11.85
28	Gasket	1	2602	\$5.99
29	Bushing	1	3205	\$27.50
--	Adapter D306-007	1	05-09044	\$37.50

## SCOTT MODEL 2600 8-INCH PNEUMATIC TIRE

The Model 2600 8" pneumatic tire and wheel assembly is used on the 3200, 3250, 3400 and 3425 Series tailwheel assemblies. The Model 3245-1 10" pneumatic tire and wheel assembly is used on the 3425 & 3450 Series tailwheel assemblies. Total Wt. 3 lbs. 13 oz.



Item No.	Part No.	Description	8" Assy P/N 2600	10" Assy P/N 3245-1	Price Each
1	3227	Spacer	2	2	\$29.95
2	1863	Retainer, Grease	2	2	\$11.50
3	1862	Spacer	2	2	\$12.50
4	13286	Bearing Cone (A-4050)	2	2	\$66.75
5	13287	Bearing Cup (A-4138)	2	2	\$62.75
6	18438	Bolt	4	4	\$0.21
7	33478-202	Nut, Self Locking	4	4	\$0.15
9	2602	Gasket	1	1	\$5.99
10	3228	8" Tire	1		\$56.75
11	06-08100	10" Tire		1	\$65.75
12	3223	8" Tube	1		\$25.50
13	3247	10" Tube		1	\$25.85

## SCOTT LEAF SPRING SPACERS AND SPRING KITS

3241-3S - Spacer Only.....	P/N 06-00406 .....	\$20.90
3243-2 - Spacer Only .....	P/N 06-00407 .....	\$76.75
3241-1S - Adapter Kit - Converts 1-3/4" 3216 (1 3/4") bracket to 1-1/2" width. ....	P/N 06-00408 .....	\$73.75
3239 - Heavy Duty Tension Spring Kit.....	P/N 06-00008 .....	\$76.75
3243-01 - Converts 1-3/4" Bracket to 1-1/4" Bracket. Used on 3200 Tailwheel.....	P/N 06-00421 .....	\$115.75

## ALASKAN BUSHWHEEL T3 TAILWHEEL SUSPENSIONS

The T3 - Heavy Duty suspension is a bolt-on replacement that works with a Scott or ABI 3200 single bolt tailwheel setup. Installation typically takes less than an hour.



Model No.	Description	Part No.	Price
ABI-51215	Designed for experimental PA-18 aircraft and direct copies with a max gross weight of 2000 lbs, the heavy duty T3 offers 1500 lbs/in compression for shock absorption that's neither abrupt nor too yielding.	05-15106	\$799.00
ABI-51272	Designed for experimental CubCrafters aircraft and direct copies with a max gross weight of 2000 lbs, the heavy duty T3 offers 1500 lbs/in compression for shock absorption that's neither abrupt nor too yielding.	05-15107	\$799.00
ABI-51343	Designed for experimental Piper type aircraft (like SQs) with a gross weight up to 2500 lbs, the super heavy duty T3 offers dual coil springs with 2000 lbs/in total compression for shock absorption that's ideal for heavier weight aircraft.	05-15108	\$1,031.00
ABI-51263	Designed for experimental Rans S7/S20 with a gross weight of 1320 lbs, the light-sport T3 offers 1000 lbs/in compression for shock absorption that's ideal for lighter weight aircraft.	05-15109	\$799.00
ABI-51376	Designed for experimental Kitfox, the light-sport T3 offers 1000 lbs/in compression for shock absorption that's ideal for lighter weight aircraft.	05-15110	\$799.00

LG