

# ENGINE TOOLS



## S4-1 RACE REMOVAL TOOL

A & P mechanics will find this S4 outer bearing race removal tool to be very effective and well priced. Hemispheres held together by the "O" ring are inserted together behind the bearing race. The pilot is then inserted to expand and lock the halves & push out the race. You'll like its simplicity and ease of use.....P/N 12-17601 .....\$99.75



## S4-2 RACE REMOVAL TOOL

The S4 magneto drive end inner race removal tool works in conjunction with a standard bearing puller. The split gripper ring fits behind and around the race and is captured in the puller ring by 2 opposing set screws. A groove on the puller ring provides the point of attachment for the puller arms.

P/N 12-17602 .....\$168.75



## S4-3 RACE REMOVAL TOOL

The S4 magneto seal installation, inner and outer race installation tool is three tools in one and is proportioned in such a way that it is easily accommodated by most small bench arbor presses.

P/N 12-17603 .....\$89.75

## TIMING JUMPERS



The timing jumpers are easily used for timing magnetos without removing the breaker box cover. Simply remove the "P" lead and replace with timing jumper. Then hook up timing light leads. These handy devices have proven to be a real time saver and, in some cases, an outright necessity. **SOLD IN PAIRS**

Bendix S4/S6.....P/N 12-17700 .....\$46.80/pr.  
Bendix D2200, D3000, D3200 .....P/N 12-17710 .....\$46.95/pr.

## MAGNETO ROTOR BEARING SETTING GAUGE



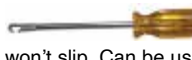
Determines condition of excess bearing clearance and allows for precise adjustment of new bearings to prevent over or under preload. Available with or without dial indicator. Choice of 3/8-16 or 3/8-24 threaded shaft fittings.

Kit Description	Thread	Part No.	Price
Setting Gauge & Ind.	3/8-16	12-17801	\$149.65
Setting Gauge & Ind.	3/8-24	12-17802	\$150.95
Setting Gauge & Ind.	Both	12-17803	\$204.95
Setting Gauge, No Ind.	3/8-16	12-17901	\$98.75
Setting Gauge, No Ind.	3/8-24	12-17902	\$69.85
Setting Gauge, No Ind.	Both	12-17903	\$108.50

## THROTTLE SHAFTBUSHING KNOCKOUT

The throttle shaft bushing removal tool is very competitively priced and will help you avoid a jury-rigged operation that could damage an expensive carburetor body. Now there is no reason not to have one. They are available and affordable.....P/N 12-17400.....\$190.75

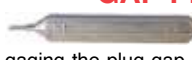
## SPRING TOOL



Get a handle on those springs! The "C" shaped tip fit the bend in spring end and won't slip. Can be used to install and remove springs on anything!

P/N 12-16945 .....\$13.95

## GAP PLUG GAUGE .014 TO .018



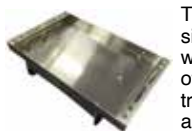
Many customers have indicated that they have had difficulty obtaining setting wires for gaging the plug gap. We now provide a handy tool at reasonable cost. No need to buy extra gauge sizes that you don't need. Furnished with protective end caps.....P/N 12-17100 .....\$14.50

## COMPASS ADJUSTING TOOL



The compass screwdriver is a great little tool that is totally non-magnetic, but also overcomes the shortcomings of solid brass or aluminum tools. This tool has a nice hex aluminum handle and a stainless steel driver insert. No need to worry about damaging the tip on a frozen compensator screw, and you can also remove the cover plate screws with the same tool.....P/N 12-17300 .....\$12.70

## ENGINE TOOL TRAY



The engine tool tray is designed for aviation enthusiasts who do maintenance on their own aircraft, as well as full time mechanics. This tool tray sits on top of the push rod tubes and is protected by rubber trim on the bottom to eliminate any damage to the aircraft engine. Instead of dropping a screwdriver or a nut down between cylinder baffling, this tool tray will give the mechanic great organization. It allows for spark plug placement, tool placement, as well as all of those pesky nuts and bolts.....P/N 12-04592 .....\$149.00

## ATS PISTON RING COMPRESSOR KIT



The ATS Piston Ring Compressor features a quick-change design to speed up piston ring installation. It includes the famous Hastings Ring-O-Matic® pliers and bands that operate in all positions: not just vertically or horizontally. The pliers incorporate a precision locking action for exact holding and quick release. Complete kit includes the Ring-O-Matic® pliers and one of each of the following size bands: 3-7/8" to 4-1/8", 4-1/8" to 4-1/2", 4-1/2" to 4-3/4", 4-3/4" to 5", 5" to 5-1/4", & 5-1/4" to 5-3/4"

Description	Part No.	Price
Kit	12-03154	\$199.95
Compressor Pliers	12-03155	\$45.95
Piston Ring Compressor Band 3-7/8" TO 4-1/8"	12-03156	\$29.99
Piston Ring Compressor Band 4-1/8" TO 4-1/2"	12-03157	\$29.99
Piston Ring Compressor Band 4-1/2" TO 4-3/4"	12-03158	\$30.95
Piston Ring Compressor Band 4-3/4" TO 5"	12-03159	\$31.50
Piston Ring Compressor Band 5" TO 5-1/4"	12-03160	\$30.95
Piston Ring Compressor Band 5-1/4" TO 5-3/4"	12-03161	\$36.99

## PISTON RING COMPRESSOR SET



The most efficient, versatile and dependable tool of its kind on the market. Designed to operate both vertically and horizontally. Fine-tooth ratcheting lock permits bands to be contracted in extremely small increments. Positive lock insures a free hand.

Eliminates broken rings during installation. Set includes compressor pliers and the two bands (1123, 1125).

Part No.	Size	Engine Application
1123	3-7/8" to 4-1/8"	Cont. A-65, C-85, C-90, 0-200, 0-300
1125	4-3/8" to 4-5/8"	Cont. E-225, IO-470

Set.....P/N 12-10900 .....\$115.95  
Piston Ring Pliers #1114.....P/N 1114 .....\$63.75  
Individual band # 1123 for 3-7/8 .....P/N 1123 .....\$25.60  
Individual Band # 1125 for 4-3/8 .....P/N 1125 .....\$27.50

## CYLINDER BASE NUT WRENCHES (CONTINENTAL)



Made of top quality tool steel. 12 Point with 1/2" square drive, 13" long.

Set of 4.....P/N 12-11200 .....\$68.50  
or order individual wrenches below.

## LYCOMING & CONTINENTAL CYLINDER BASE NUT WRENCHES

Wrench Part #	Size	Engine Application	Price
2882	9/16" Hex	C-85, 0-200, 0-300, G0-300, E-185, E-225, 0 & IO-470, IO-360, IO-520	\$18.95
2882-2	1/2" Hex	A-65, C-85, 0-200, 0-300, G0-300, E-185, E-225, IO-360	\$18.95
2882-3	5/8" Hex	A-65, 0-470, IO-520	\$18.95
2882-4	3/4" Hex	No longer used on Cont.; Used on Lyc. 0-390D, D2 and all wide deck Lyc engines	\$18.95

## CYLINDER BASE NUT WRENCHES



- For Lycoming engines
- For socket type nuts (internal wrenching)
- Standard 1/2" square female drive end
- Made from alloy steel forgings, heat-treated for maximum toughness.

1/2" Allen Head Hex.....P/N 64942 .....\$48.70  
3/8" Allen Head Hex.....P/N 64943 .....\$48.70  
Set of both.....P/N 12-04722 .....\$74.50

## ATS LYCOMING AND CONTINENTAL CYLINDER BASE NUT WRENCHES



The ATS 3882-series Cylinder Base Nut Wrenches are made from forged alloy steel, tempered, and hardened for maximum strength.

Description	Part No.	Price	Description	Part No.	Price
ATS 3882 9/16	12-04977	\$35.65	ATS 3882 5/8	12-04976	\$35.65
ATS 3882 1/2	12-04975	\$35.65	ATS 3882 3/4	12-04978	\$35.65

## DIPSTICK REMOVAL TOOL



This Removal Tool is perfect for freeing up those seemingly seized plugs. The Innovative design only allows a counter-clockwise rotation, meaning this device won't further lock the dipstick in place.

**Features:** • Molded from very durable and light weight plastic • Unique design prevents this tool from being used to tighten (nice feature for flight school use).....P/N 12-05420 .....\$13.95

TO