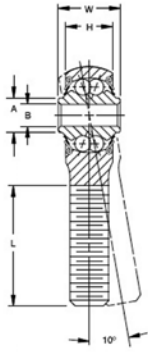
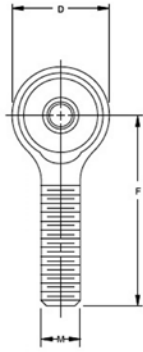


# BEARINGS

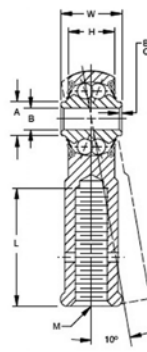
**AN 946  
MALE THREADED SHANK**



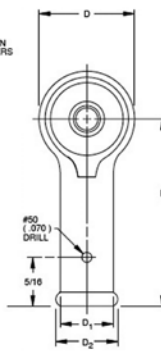
**MS 21151**



**AN 951  
FEMALE THREADED SHANK**



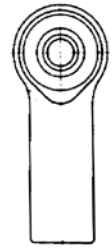
**MS 21153**



**AN948 HOLLOW SHANK  
SOLID SHANK**



**MS21152  
MS21150**



AP

Bearing No.	MS Dash No.	B	D	W	H	A	F	G	L	J	K	M Thread Or Drill Size Inches		Balls		Lbs. Approx.	Weight Type Seal	Price Each
		Bore +.0000 -.0005 In.	Outside Diam. +.010 -.010 In.	Width Inner Ring +.000 -.010 In.	Width Outer Ring +.010 -.010 In.	Shoulder Diam. Inner Ring (Approx.) In.	Bore Center to end of Shank +.010 -.010 In.	Overall Dimen- sion +.010 -.010 In.	Thread Length of Shank Hole Depth In.	Bead or Hex Diam. Across Flats In.	Shank Diam. +.010 -.010 In.	Size	Pitch Diam.	No.	Size			

**MALE THREAD - MS 21151**

Precision series. Double row, ball, self-aligning. 10° permissible misalignment in either direction. These bearings are manufactured with an internal play of .0004 in. (.010mm) max. Inner and outer raceway surface finish = 8 micro in. AA max. Equipped with PTFE seals. Exposed surfaces except bore, cap, and seals are cadmium plated. Outer shank – 90,000 psi min. tensile strength. Prelubricated (refer to nomenclature page)

REP3ML3	-1	.1900	.781	.437	.328	.281	1.375	1.766	.750			10-32 LH	.1697 .1667	20	1/8"	.04	Solid Seal	<b>\$68.80</b>
REP3MR3	-2	.1900	.781	.437	.328	.281	1.375	1.766	.750			10-32 RH	.1697 .1667	20	1/8"	.04	Solid Seal	<b>\$77.75</b>
REP3M6A	-3	.1900	.969	.500	.407	.304	2.031	2.516	1.313			3/8"-24 RH	.3479 .3449	24	1/8"	.05	Solid Seal	<b>\$125.75</b>
REP3M6-2N	-4	.1900	.781	.437	.328	.281	1.375	1.766	.750			3/8"-24 RH	.3479 .3449	20	1/8"	.05	Solid Seal	<b>\$59.75</b>
REP4M6	-8	.2500	.938	.593	.438	.345	1.875	2.344	1.125			3/8"-24 RH	.3479 .3449	22	5/32"	.07	Plyo-Seal	<b>\$61.75</b>
REP4ML6	-9	.2500	.938	.593	.438	.345	1.875	2.344	1.125			3/8"-24 LH	.3479 .3449	22	5/32"	.07	Plyo-Seal	<b>\$67.75</b>
REP5M6	-10	.3125	1.25	.870	.686	.506	2.438	1.563	3/8-24			3/8"-24	.4050			.24		<b>\$107.85</b>

**FEMALE THREAD - MS 21153**

Precision series. Double row, ball, self-aligning. 10° permissible misalignment in either direction. These bearings are manufactured with an internal play of .0004 in. (.010mm) max. Inner and outer raceway surface finish = 8 micro in. AA max. Equipped with PTFE seals. Exposed surfaces except bore, cap, and seals are cadmium plated. Outer shank – 90,000 psi min. tensile strength. Prelubricated (refer to nomenclature page)

REP3N*	-1	.1900	.781	.437	.328	.281	1.375	1.766	.750	.438	.375	1/4"-28 RH	.2298 .2268	20	1/8"	.05	Plyo-Seal	<b>\$82.75</b>
REP3N2***	-2	.1900	.781	.437	.328	.281	1.375	1.766	.750	.438	.438	5/16"-24 RH	.2884 .2854	20	1/8"	.06	Plyo-Seal	<b>\$99.75</b>
REP3F4	-3	.1900	.781	.500	.328	.281	1.375	1.766	.750	.438	.375	1/4"-28 RH	.2268 .2284	20	1/8"	.06	Solid Seal	---
REP4F5	-6	.2500	.938	.593	.438	.345	1.469	1.938	.750	.438	.438	5/16"-24 RH	.2884 .2854	22	5/32"	.07	Plyo-Seal	<b>\$103.75</b>

**HOLLOW SHANK - MS 21152**

REP3H5**	-1	.1900	.781	.437	.328	.281	1.375	1.766	.875		.435		.272	20	1/8"	.06	Plyo-Seal	<b>\$99.80</b>
RE4H6																	Solid Seal	<b>\$99.85</b>
REP4H6	-2	.2500	.938	.593	.438	.345	1.875	2.344	1.219		.625		.386	22	5/32"	.12	Plyo-Seal	<b>\$99.85</b>
REP4H8	-3	.2500	.938	.593	.438	.345	1.625	2.093	.875		.625	33/64	.515	22	5/32"	.08	Plyo-Seal	---

**SOLID SHANK MS21150**

REP3S7	-1	.19	.791	.437	.328	.281	1375				.430		SOLID	22	5/32"	.07	Plyo-Seal	<b>\$92.75</b>
REP4S10	-2	.2500	.938	.593	.438	.345	1.875	2.344			.625		SOLID	22	5/32"	.16	Plyo-Seal	<b>\$73.75</b>

\*Dimensionally Same as Heim F34-14  
\*\*Dimensionally Same as Heim F31-14  
\*\*\*Dimensionally Same as Heim F35-14

Bearings with the letter "P" in part number are new manufacture, with Plyoseals.  
Bearings without the letter "P" in part number are new surplus, with solid metal seals.