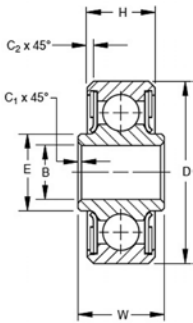


# BEARINGS

## KP SERIES—AN200 / MS27640

Single row, ball, heavy duty. PTFE seals and CRES sealcaps. Exposed surfaces except bore, caps, and seals are cadmium plated. Prelubricated for life. Also offered with CRES 440C material and/or zinc nickel plating per OEM specifications

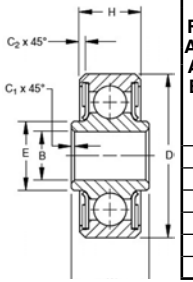


FAFNIR ANDMS AFBMA Bearing No.	Bore 27640	B		D		W		H		A		E		C		Balls	Pure Moment Rating	Moment Constant 1 Lbs.	Weight Pounds Inch (Approx.)	Price Each
		Dia +.0000 - .0005 (in.)	Outside Inner Ring +.0000 - .0005 (in.)	Width Outer Ring +.000 - .005 (in.)	Width Inner Ring +.000 - .005 (in.)	Shoulder Width Bore Ring (Approx.) (in.)	Inner Ring O. D. +.015 - .000 (in.)	Outer Ring +.015 - .000 (in.)	No.	Size	Inch									
KP3L*	-3A	.1900	.6250	.245	.203	.280	.005	.010	10	5/32"	51.8	12.08	.01	\$38.99						
KP3	-3	.1900	.7774	.297	.270	.331	.005	.022	12	5/32"	93.7	10.13	.03	\$22.50						
	-4	.2500	.9014	.484	.335	.390	.005	.032	11	1/4"	130	8.84	.04	\$27.50						
KP5	-5	.3125	1.2500	.558	.375	.469	.015	.032	9	5/16"	335	6.77	.09	\$35.75						
KP6	-6	.3750	1.4375	.620	.469	.591	.015	.032	10	11/32"	580	5.44	.15	\$26.90						
KP8	-8	.5000	1.6875	.620	.500	.768	.015	.044	10	11/32"	1060	4.46	.21	\$39.65						

\* Stainless steel shield (for "Plya-Seals" use KP3A which has same bore and O.D.) Equiv. Thrust Load = Thrust + .8 Radial Load + Moment Constant x Moment in Inch Lbs.

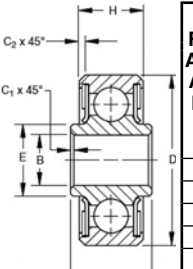
## KP-A SERIES—AN201 / MS27641

Single row, ball, deep groove, medium duty. PTFE seals and CRES sealcaps. Exposed surfaces except bore, caps, and seals are cadmium plated. Prelubricated for life. Also offered with CRES 440C material and/or zinc nickel plating per OEM specifications



FAFNIR AND MS AFBMA Bearing No.	Bore 27641	B		D		W		H		A		E		C		Balls	Max Static Non-Brinell Rating		Pure Moment Rating Inch-Lbs.	Moment Constant 1 Inch	Weight Pounds (Approx.)	Price Each
		Dia +.0000 - .0005 (in.)	Outside Inner Ring +.0000 - .0005 (in.)	Width Outer Ring +.000 - .005 (in.)	Width Inner Ring +.000 - .005 (in.)	Shoulder Dia. Bore Ring (Approx.) (in.)	Inner Ring O. D. +.015 - .000 (in.)	Outer Ring +.015 - .000 (in.)	No.	Size	Radial Lbs.	Thrust Lbs.										
KP3A	3	.1900	.6250	.297	.234	.297	.005	.016	10	1/8"	800	600	51.8	12.08	.01	\$25.50						
KP4A	4	.2500	.7500	.281	.219	.380	.005	.016	12	1/8"	1100	900	73.8	10.17	.02	\$19.90						
KP5A	5	.3125	.8125	.297	.234	.415	.015	.016	14	1/8"	1300	1000	100	8.76	.02	\$19.50						
KP6A	6	.3750	.8750	.313	.250	.495	.015	.016	16	1/8"	1400	1100	130	7.68	.03	\$14.55						
KP8A	8	.5000	1.1250	.375	.313	.616	.015	.016	16	5/32"	2200	1700	250	6.14	.05	\$32.65						
EW1/2	NORMA	.5040	.9690	.250	.250											.03	---					

## KS SERIES—MS27645

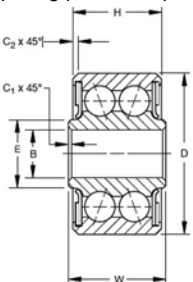


FAFNIR AND MS AFBMA Bearing No.	Bore 27645	B		D		W		H		A		E		C		Balls	Maximum Static Rating		Weight Pounds (Approx.)	Price Each
		Diameter +.0000 - .0005 (in.)	Outside Inner Ring +.0000 - .0005 (in.)	Width Outer Ring +.000 - .005 (in.)	Width Inner Ring +.000 - .005 (in.)	Shoulder Width Bore Ring (Approx.) (in.)	Inner Ring O. D. +.015 - .000 (in.)	Outer Ring +.015 - .000 (in.)	No.	Size	Radial Lbs.	Thrust Lbs.								
KSP3L	3A	.1900	.6250	.245	.203	.257	.005	.016	13	3/32"	400	100	.01	\$23.85						
KSP3	3	.1900	.7774	.297	.270	.342	.005	.022	12	1/8"	800	200	.03	\$26.75						
KSP4	4	.2500	.9014	.484	.335	.400	.005	.032	12	5/32"	1100	300	.04	\$31.50						
KSP5	5	.3125	1.2500	.558	.375	.562	.015	.032	13	3/16"	1400	300	.10	\$38.70						
*KS6A	6A	.3750	.8750	.313	.250	.475	.016	.016	15	1/8"	1000	200	.03	\$29.75						

\* NOTE: These bearings are self-aligning for 10° in either direction except for KS6A (not AN200) which is self-aligning for 8° in either direction.

## DP SERIES—AN207 / MS27644

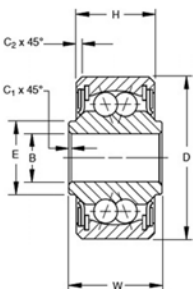
Double row, ball, light and heavy duty. PTFE seals and CRES sealcaps. Exposed surfaces except bore, caps and seals are cadmium plated. Prelubricated for life. For use where high moment rigidity is required, DPP-W series only. Also offered with CRES 440C material and/or zinc nickel plating per OEM specifications



FAFNIR Bearing No.	MS 27644	B		D		W		H		A		E		C		Balls	Maximum Static Non-Brinell		Weight Pounds (Approx.)	Price Each
		Bore +.0000 - .0005 (in.)	Dia. +.0000 - .005 (in.)	Outside Inner Ring +.000 - .005 (in.)	Width Outer Ring +.000 - .005 (in.)	Shoulder Width Inner Ring +.000 (Approx.) (in.)	Shoulder Width Inner Ring +.000 (Approx.) (in.)	Inner Ring O. D. +.015 - .000 (in.)	Inner Ring O. D. +.015 - .000 (in.)	No.	Size	Radial Lbs.	Thrust Lbs.							
DPP3	-3	.1900	.7774	.495	.473	.302	.005	.02	20	5/32"	2500	1700	.04	\$49.50						
DPP4	-4	.2500	.9014	.620	.491	.410	.005	.032	22	5/32"	3000	1800	.06	\$39.50						
DPP5	-5	.3125	1.2500	.745	.687	.469	.015	.032	20	1/4"	6900	4200	.17	\$63.50						
DPP6	-6	.3750	1.4375	.870	.794	.551	.015	.032	18	5/16"	9700	5800	.26	---						
DPP8	-8	.5000	1.6875	.932	.856	.735	.015	.044	20	11/32"	13000	7800	.38	---						

## DSP SERIES—AN206 / MS27643

Double row, ball, self-aligning, heavy duty. PTFE seals and CRES sealcaps. Exposed surfaces except bore, caps, and seals are cadmium plated. Prelubricated for life. Also offered with CRES 440C material and/or zinc nickel plating per OEM specifications



FAFNIR Bearing No.	MS 27643	B		D		W		H		A		E		C		Balls	Maximum Static Non-Brinell		Weight Pounds (Approx.)	Price Each
		Bore +.0000 - .0005 (in.)	Dia. +.0000 - .005 (in.)	Outside Inner Ring +.000 - .005 (in.)	Width Outer Ring +.000 - .005 (in.)	Shoulder Width Inner Ring +.000 (Approx.) (in.)	Shoulder Width Inner Ring +.000 (Approx.) (in.)	Inner Ring O. D. +.015 - .000 In.	Inner Ring O. D. +.015 - .000 In.	No.	Size	Radial Lbs.	Thrust Lbs.							
DSP3	-3	.1900	.7774	.500	.392	.304	.005	.022	24	1/8"	1420	200	.04	\$48.50						
DSP4	-4	.2500	.9014	.687	.464	.430	.005	.032	30	1/8"	1780	300	.06	\$46.70						
DSP5	-5	.3125	1.2500	.812	.656	.515	.015	.032	28	3/16"	3740	600	.16	\$45.90						
DSP6	-6	.3750	1.4375	.937	.750	.564	.015	.032	28	7/32"	5100	800	.24	---						
DSP8	-8	.5000	1.6875	1.000	.812	.775	.015	.044	30	1/4"	7120	1000	.36	---						