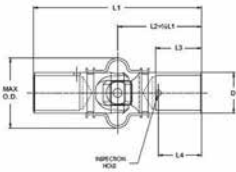


BEARINGS – UNIVERSAL JOINTS



MS20271 UNIVERSAL JOINTS

Complete universal joint line includes a full range of military certified MS20271 and continually tested universal joints used in defense vehicles, aerospace applications, as well as shift/gear change linkage in specialty vehicles.

Meets or exceeds military specification MIL-J-6193

Part No.	ID (in.)	Price Ea
MS20271-B8	3/8	\$134.75
MS20271-B10	1/2	\$109.75
MS20271-B12	5/8	\$109.85
MS20271-B14	3/4	\$121.75



Dash #	+0.00, -.002 (+0.00, -.051) Outside Dia.		+/-0.015 (+/-0.381) Overall Length		+0.031, -.000 (-.787, -.000) Bore Depth		+0.004, -.025 (+.102, -.025) Bore Dia.		+/-0.015 (+/-0.381) Insp. Hole Loc.		Max Dia. (+.102, -.025) Cover Dia.		Weight Max	
	in	mm	in	mm	in	mm	in	mm	in	mm	in	mm	lbs.	kg.
B8	.495	12.57	2.625	66.67	.625	15.88	.375	9.52	.562	14.27	1.031	26.19	.09	.041
B10	.620	15.75	2.750	69.85	.750	19.05	.500	12.70	.687	17.45	1.156	29.36	.18	.082
B12	.745	18.92	3.187	80.95	.875	22.22	.625	15.88	.812	20.62	1.437	36.50	.24	.109
B14	.870	22.10	3.625	92.07	1.00	25.40	.750	19.05	.937	23.80	1.562	39.67	.35	.159

*Five hour test at 15° angle.

TORSIONAL OVERLOADS

AXIAL OVERLOADS



Temporary torsional overloads as great as 80% of rated ultimate have been handled by these universal joints without harmful binding.

Temporary axial overloads ranging up to 150% in excess of rated ultimates have been imposed without binding. These characteristics insure high safety factors under the most difficult operating conditions.

H-9426 BALL JOINT

* Hex: 1/2 Inch *Thread: 5/16-18 *Ball: 10 mm
P/N 06-00675.....\$1.15



P/N 05-07600

BALL JOINT ASSEMBLIES COMMERCIAL

Ball Joint Style	Female End	Male End	Part No.	Price
Is similar to AN276-6. Experimental Only	1/4-28	1/4-28	05-07300	\$14.50
Commercial	10-32	1/4-28	05-07400	\$3.50
Commercial	10-32	10-32	05-07500	\$3.35
Commercial	1/4-28	1/4-28	05-07600	\$20.95

GEARS, CHAINS, SPROCKETS AND BEARINGS



BOSTON GEAR PRODUCTS

STEEL SPROCKETS - These sprockets have many applications in a control system. Hub type.

Sprocket Part No.	Chain No. of	Size	Teeth	Price
25B12	1/4"	12		\$6.75
25B15	1/4"	15		\$7.50
25B20	1/4"	20		\$10.60
35B14	3/8"	14		\$8.50

BUSHINGS - As used on the Solitaire Sailplane.

Bushing Part No.	Price
FF520-10	\$1.57
FF620	\$1.45

ROLLER CHAIN - These chains fit above sprockets.

1/4" Chain - 10 Ft.	P/N 05-29325	\$62.85
3/8" Chain - 10 Ft.	P/N 05-29335	\$62.50
Extra Links - S25	P/N 05-29300	\$0.65
Extra Links - S35	P/N 05-29350	\$0.57

GEARS + BEARINGS

FB-35-1.....Flange Bearing	\$1.10	G-481-G Gear	\$35.95
FB-35-2.....Flange Bearing	\$0.84	G-481Y-P Pinion	\$20.50
FB-1012-4.....Flange Bearing	\$0.80	NF-14-6-8 Bearing	\$1.65
FB-1013-8.....Flange Bearing	\$2.50	NF-16-8-9 Bearing	\$2.25
FB-1620-10.....Flange Bearing	\$6.50		
FB-46-2.....Flange Bearing	\$0.36		

COMPLETE LINE OF BOSTON GEAR PRODUCTS AVAILABLE



BRONZE BUSHINGS SS-610-8

Cast Bronze bearings fit a wide range of applications.

Key Benefits:

High Strength, Excellent Machinability
P/N 04-01937\$1.95

SINTERED BRONZE OIL IMPREGNATED BEARINGS PLAIN BEARINGS

Part Number	Hole ID	Hole OD	Length	Price
05-01977	3/16	5/16	3/4"	\$1.40
05-01976	1/4	3/8	1"	\$0.90
05-01974	1/2	3/4	3/4"	\$1.50
05-01975	1/2	3/4	1"	\$1.70
05-01979	9/16	3/4	1"	\$1.60
05-01978	5/8	3/4	1"	\$0.98
05-01891	3/4	7/8	1"	\$1.35

FLANGE BEARINGS

Part Number	Hole ID	Hole OD	Length	Flange OD	Flange Thickness	Price
05-01949	1/4	3/8	1/4"	15/32	1/16	\$0.44
05-01947	1/2	5/8	1/2"	7/8	1/16	\$1.10
05-01946	1/2	5/8	1"	7/8	1/16	\$1.50
05-01948	1/2	3/4	1"	15/16	1/8	\$1.60
05-01951	5/8	3/4	1/2"	1	3/32	\$1.10
04-01638	5/8	3/4	1"	1	3/32	\$1.70
05-01950	3/4	7/8	3/4	1-1/8	1/8	\$1.28
05-01945	1	1-1/4	3/4	1-5/8	1/8	\$2.90



SINGLE-ROW TAPERED ROLLER BEARINGS

The most basic and widely used tapered bearing, the single-row type consists of the cone assembly and the cup. It is usually fitted as one of an opposing pair. During equipment assembly, single-row bearings can be set to the required clearance (endplay) or preload condition to optimize performance. Single-row tapered roller bearings have positive roller alignment that ensures true rolling motion and generates a "seating force" that pushes the roller against the cone large rib. This seating force prevents the rollers from skewing off apex, thereby keeping them positively aligned and located against the cone large rib.....P/N 05-29749\$73.75

BELLCRANK BEARINGS



Part No.	Bore	Flange Dia.	Race Width	Price Each
BC4W10 (AN218-4) Experimental Only	1/4"	1-5/8"	5/8"	\$24.95
BC5W11	5/16"	1-11/16"	5/8"	\$30.95

*Military P/N AN218P4 / MS20218-1. Certs Available.
All bearings inspected per MIL-I45208A. 100% traceable. Currently installed on new and rebuilt certified aircraft. Prepacked with lubricant conforming to MIL-G-23827

Quantity discount quoted on request