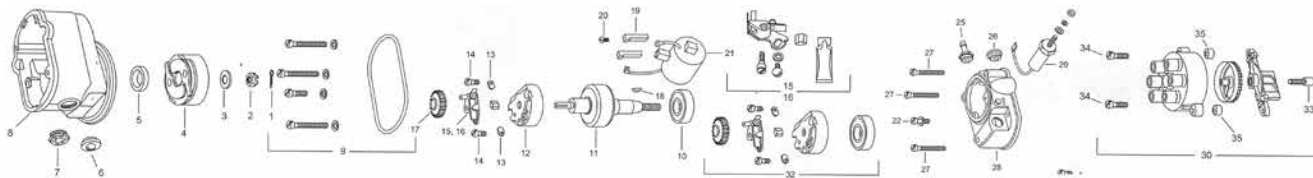


SLICK MAGNETO PARTS



6300 SERVICE PARTS LIST

| No. | Description | 6310 | 6314 | 6320 | 6324 | 6331 | 6340 | 6350 | 6351 | 6355 | 6360 | Qty. | Price ea |
|------|---------------------------|-------|-------|-------|-------|-------|-------|-------|-------|-------|-------|------|----------|
| 1 | Cotter pin | M2556 | M2556 | M2556 | M2556 | M2556 | M2556 | M2556 | M2556 | M2556 | M2556 | 1 | \$7.50 |
| 2 | Nut, Impulse Coupling | M3019 | M3019 | M3019 | M3019 | M3019 | M3019 | M3019 | M3019 | M3019 | M3019 | 1 | \$11.50 |
| 3 | Washer | M3172 | M3172 | M3172 | M3172 | - | - | - | - | - | - | 1 | \$14.50 |
| 4 | Impulse Coupling Ass. | M3050 | M3089 | M3050 | M3089 | M3800 | - | - | M3333 | M3635 | - | 1 | \$699.00 |
| 5 | Oil Seal | M3062 | M3062 | M3062 | M3062 | M3331 | M3331 | M3331 | M3331 | M3331 | M3331 | 1 | \$25.50 |
| 6 | Pressure Vent Plug | - | - | M3179 | M3179 | M3179 | M3179 | - | - | - | M3179 | 1 | \$10.85 |
| 7 | Air Vent | M1077 | M1077 | - | - | - | - | M1077 | M1077 | M1077 | - | 1 | \$10.75 |
| 8 | Frame | M3837 | M3847 | M3837 | M3847 | M3888 | M3900 | M3900 | M3859 | M3859 | M3900 | 1 | \$562.00 |
| 9 | Gasket Pressure Kit | - | - | K3307 | K3307 | K3307 | K3307 | - | - | - | K3307 | 1 | \$132.85 |
| 10 | Ball Bearing | M3006 | M3006 | M3006 | M3006 | M3006 | M3006 | M3006 | M3006 | M3006 | M3006 | 1 | \$75.75 |
| 11 | Rotor | M3047 | M3093 | M3047 | M3093 | M3792 | M3801 | M3117 | M3327 | M3416 | M3117 | 1 | \$425.00 |
| 13 | Bearing Cap Clamp | M3018 | M3018 | M3018 | M3018 | M3018 | M3018 | M3018 | M3018 | M3018 | M3018 | 2 | \$3.35 |
| 14 | Screw | M3221 | M3221 | M3221 | M3221 | M3221 | M3221 | M3221 | M3221 | M3221 | M3221 | 2 | \$27.60 |
| 15 | Contact Pt. Kit-Primary | M3081 | M3081 | M3081 | M3081 | M3081 | M3081 | M3081 | M3081 | M3081 | M3081 | 1 | --- |
| 16 | Contact Pt. Kit-Secondary | - | - | - | - | - | - | - | - | - | - | 1 | \$152.95 |
| 17 | Rotor Gear | M3828 | M3828 | M3828 | M3828 | M3828 | M3828 | M3828 | M3828 | M3828 | M3828 | 1 | --- |
| 18 | Woodruff Key | M2536 | M2536 | M2536 | M2536 | M2536 | M2536 | M2536 | M2536 | M2536 | M2536 | 1 | \$6.70 |
| 19 | Coil Wedge | M3040 | M3040 | M3040 | M3040 | M3040 | M3040 | M3040 | M3040 | M3040 | M3040 | 2 | \$21.50 |
| 20 | Screw | M3020 | M3020 | M3020 | M3020 | M3020 | M3020 | M3020 | M3020 | M3020 | M3020 | 1 | --- |
| 21 | Coil | M3975 | M3975 | M3975 | M3975 | M3975 | M3975 | M3975 | M3975 | M3975 | M3975 | 1 | \$596.00 |
| 22 | Screw | M2555 | M2555 | - | - | - | - | M2555 | M2555 | M2555 | - | 1 | \$2.34 |
| 24 | Screw | - | - | - | - | - | - | - | - | - | - | 3 | \$2.42 |
| 25 | Pressure Tube Fitting | - | - | M3180 | M3180 | M1280 | M1280 | - | - | - | M1280 | 1 | \$26.50 |
| 26 | Air Vent with Hood | M3084 | M3084 | - | - | - | - | M3084 | M3084 | M3084 | - | 1 | \$36.85 |
| 27 | Screw | M3015 | M3015 | - | - | - | - | M3015 | M3015 | M3015 | - | 3 | \$2.70 |
| 28 | Housing, Distributor | M3902 | M3902 | M3902 | M3902 | M3902 | M3902 | M3902 | M3902 | M3902 | M3902 | 1 | \$311.00 |
| 29 | Capacitor | K3984 | K3984 | K3984 | K3984 | K3984 | K3984 | K3984 | K3984 | K3984 | K3984 | 1 | --- |
| 31 | Washer | M2532 | M2532 | - | - | - | - | M2532 | M2532 | M2532 | - | 1 | \$1.38 |
| 32 | Bearing Kit | K3320 | K3320 | K3320 | K3320 | K3319 | K3319 | K3319 | K3319 | K3319 | K3319 | 1 | \$332.00 |
| 33 | Carbon Brush | M3215 | M3215 | M3215 | M3215 | M3215 | M3215 | M3215 | M3215 | M3215 | M3215 | 1 | \$22.50 |
| 34 | Screw | M3021 | M3021 | M3021 | M3021 | M3021 | M3021 | M3021 | M3021 | M3021 | M3021 | 2 | \$2.28 |
| 35-- | Spacer | M3826 | M3826 | M3826 | M3826 | M3826 | M3826 | M3826 | M3826 | M3826 | M3826 | 2 | \$5.40 |

| No. | Description | 6361 | 6362 | 6363 | 6364 | 6365 | 6367 | 6371 | 6380 | 6382 | 6390 | Qty. | Price ea |
|------|---------------------------|-------|-------|-------|-------|-------|-------|-------|-------|-------|-------|------|----------|
| 1 | Cotter pin | M2556 | M2556 | M2556 | M2556 | M2556 | M2556 | M2556 | M2556 | M2556 | M2556 | 1 | \$7.50 |
| 2 | Nut, Impulse Coupling | M3019 | M3019 | M3019 | M3492 | M3019 | M3492 | M3019 | M3019 | M3019 | M3019 | 1 | \$11.50 |
| 3 | Washer | - | M3172 | - | - | - | - | - | M3172 | M3172 | - | 1 | \$14.50 |
| 4 | Impulse Coupling Ass. | M3333 | M3050 | - | M3590 | - | M3524 | - | M3050 | M3050 | - | 1 | \$699.00 |
| 5 | Oil Seal | M3331 | M3062 | M3331 | M3062 | M3331 | M3062 | M3331 | M3062 | M3062 | M3331 | 1 | \$25.50 |
| 6 | Pressure Vent Plug | M3179 | - | M3179 | - | M3179 | - | - | - | - | - | 1 | \$10.85 |
| 7 | Air Vent | - | M1077 | - | M1077 | - | M1077 | M1077 | M1968 | M1968 | M1077 | 1 | \$10.75 |
| 8 | Frame | M3859 | M3837 | M3900 | M3853 | M3900 | M3856 | M3900 | M3850 | M3850 | M3900 | 1 | \$562.00 |
| 9 | Gasket Pressure Kit | K3307 | - | K3307 | - | K3307 | - | - | - | - | - | 1 | \$132.85 |
| 10 | Ball Bearing | M3006 | M3006 | M3006 | M3006 | M3006 | M3006 | M3006 | M3006 | M3006 | M3006 | 1 | \$75.75 |
| 11 | Rotor | M3327 | M3047 | M3117 | M3496 | M3117 | M3499 | M3117 | M3047 | M3047 | M3117 | 1 | \$425.00 |
| 13 | Bearing Cap Clamp | M3018 | M3018 | M3018 | M3018 | M3018 | M3018 | M3018 | M3018 | M3018 | M3018 | 2 | \$3.35 |
| 14 | Screw | M3221 | M3221 | M3221 | M3221 | M3221 | M3221 | M3221 | M3221 | M3221 | M3221 | 2 | \$27.60 |
| 15 | Contact Pt. Kit-Primary | M3081 | M3081 | M3637 | M3081 | M3637 | M3081 | M3637 | M3081 | M3081 | M3637 | 1 | --- |
| 16 | Contact Pt. Kit-Secondary | - | - | M3637 | - | M3637 | - | M3637 | - | - | M3740 | 1 | \$152.95 |
| 17 | Rotor Gear | M3828 | M3828 | M3828 | M3828 | M3828 | M3828 | M3828 | M3828 | M3828 | M3828 | 1 | --- |
| 18 | Woodruff Key | M2536 | M2536 | M2536 | M2536 | M2536 | M2536 | M2536 | M2536 | M2536 | M2536 | 1 | \$6.70 |
| 19 | Coil Wedge | M3040 | M3040 | M3040 | M3040 | M3040 | M3040 | M3040 | M3040 | M3040 | M3040 | 2 | \$21.50 |
| 20 | Screw | M3020 | M3020 | M3020 | M3020 | M3020 | M3020 | M3020 | M3020 | M3020 | M3020 | 1 | --- |
| 21 | Coil | M3975 | M3975 | M3975 | M3975 | M3975 | M3975 | M3975 | M3975 | M3975 | M3975 | 1 | \$596.00 |
| 22 | Screw | - | M2555 | - | M2555 | - | M2555 | M2555 | M2555 | M2555 | M2555 | 1 | \$2.34 |
| 24 | Screw | - | M3125 | - | - | - | - | - | - | M3125 | - | 3 | \$2.42 |
| 25 | Pressure Tube Fitting | M1280 | - | M1280 | - | M1280 | - | - | - | - | - | 1 | \$26.50 |
| 26 | Air Vent with Hood | - | M3084 | - | M3084 | - | M3084 | M3084 | M3084 | M3084 | M3084 | 1 | \$36.85 |
| 27 | Screw | - | M3015 | - | M3015 | - | M3015 | M3015 | M3015 | M3015 | M3015 | 3 | \$2.70 |
| 28 | Housing, Distributor | M3902 | M3902 | M3832 | M3902 | M3832 | M3902 | M3832 | M3902 | M3902 | M3874 | 1 | \$311.00 |
| 29 | Capacitor | K3984 | K3984 | K3984 | K3984 | K3984 | K3984 | K3984 | K3984 | K3984 | K3984 | 1 | --- |
| 31 | Washer | - | M2532 | - | M2532 | - | M2532 | M2532 | M2532 | M2532 | M2532 | 1 | \$1.38 |
| 32 | Bearing Kit | K3319 | K3320 | K3302 | K3320 | K3302 | K3320 | K3302 | K3320 | K3320 | K3302 | 1 | \$332.00 |
| 33 | Carbon Brush | M3215 | M3215 | M3215 | M3215 | M3215 | M3215 | M3215 | M3215 | M3215 | M3215 | 1 | \$22.50 |
| 34 | Screw | M3021 | M3021 | M3021 | M3021 | M3021 | M3021 | M3021 | M3021 | M3021 | M3021 | 2 | \$2.28 |
| 35-- | Spacer | M3826 | M3826 | M3826 | M3826 | M3826 | M3826 | M3826 | M3826 | M3826 | M3826 | 2 | \$5.40 |