

# ENGINE MOUNTS



## DYNAFOCAL ENGINE MOUNT RINGS & KITS

Standard rings furnished with 2-3/4" I.D. retainers, completely welded, ready for mount assembly. The Dynafoval ring kits contain all tubing cut and bent, with 2-3/4" I.D. retainers, ready to weld.

Dynafoval Ring for Lyc. 0-235 to 10-360 (200 HP)..P/N 33521 ..\$299.95  
 Dynafoval Ring for Lycoming 0-320B..... P/N 33521-B \$299.95  
 Dynafoval Ring Kit for Lyc. 0-235 to 10-360 (200 HP) (Pre-Welded) ..... P/N 33522.... \$446.00  
 Retainer Cups & Rings Kit ..... P/N 33253... \$178.85 (includes 8 cups & 4 rings - everything in #33522 kit above except the tubing)

## VIP ENGINE MOUNTS FOR EXPERIMENTAL AIRCRAFT

Spruce P/N	Lord Equiv.	Barry Equiv	Price ea.
08-00774	J9613-49	94110-20	\$88.75
08-00775	---	94016-08	\$69.50

## SANDWICH MOUNTS FOR HOMEBUILT AIRCRAFT



Sandwich assemblies of natural rubber and specially blended synthetic compounds bonded to 2 metal plates. Normal installation requires 4 assemblies, each consisting of 2 sandwich mountings and 1 spacer. Satisfactory performance requires that the spacer be designed to the correct length to precompress each mounting to guarantee proper positioning of the mountings. Set consists of eight bonded sandwich mountings equivalent to Lord

Mount No. J-7402-5 (2" Dia.) and four 4130 steel spacers with mounted rubber shoulder. Use with dynafoval engine mount rings using 2-3/4" I.D. retainer cups. Used on many homebuilts including the Defiant and Long-EZ.....P/N 08-03500 .....\$449.00

## SPECIAL HEAVY DUTY MOUNT SETS



Designed for use on aerobatic aircraft such as Christen Eagle and Acro. Same style as homebuilt type but inner core has been "beefed up" and elastomers added to encapsulate the spacer. 2-inch diameter. Includes a set of 8 Mounts and 4 spacers to make one complete engine set of 4.

**Note: Mounting hole is 7/16" and requires AN7 bolts for installation.**  
 50401-300 w/4 Spacers .....P/N 08-03600 .....\$279.80

**DISCOUNT: LESS 10% ON 6 SETS, 15% ON 10 SETS, 20% ON 20 SETS**



## LORD MOUNTS FOR COZY ENGINE MOUNT

These Lord J-7402-24 mounts fit the engine mount for Lyc. 0-360 manufactured by CG Parts. P/N 07-01115 .....\$189.80

## SKYBOLT PLATEMOUNTS



The SK2003A Series Mounts were specifically designed around the latest generation Cessna/Lord J7444-42 Series Mount. The SK2003-14A, -24A, and -42A all have the same flex feature as the J7444-42. They look and install exactly the same as the Cessna/Lord part it replaces using the same fastener length. The SK2003-14A, -24A, and -42A are fixed depth, Non-Adjustable Platemounts. The 50ADJ is adjustable and can be adjusted without removing the cowling for an exact fit.

Model	Application	Part No.	Price
SK2003-14A	Cessna PN J7444-14. Used On - 67-On C150 (10ea), 67-86 C172 (11ea), C172XP (13ea) 68-78 C177 (14ea)	08-07222	\$23.80
SK2003-24A	Cessna PN J7444-24. Used On - 73-86 C182 (14ea)	08-07223	\$27.55
SK2003-42A	Cessna PN J7444-36 and -42. Used on -97, C172 R & S (14ea)	08-07208	\$33.95

## BARRY MOUNT FOR VANS AEROBATIC AIRCRAFT



Barry Controls is a manufacturer of many aircraft engine mounts of both experimental and certified types. They also manufacture engine mounts for experimental and kit airplanes of various makes and models. Please call or visit our website for application information.

P/N 94016-08 .....\$437.95

## HOMEBUILDERS CONICAL LYCOMING ENGINE MOUNT BUSHINGS



These new bushings offer superior damping qualities and do not harden over time as original mounts can do. They are molded from hi-tech silicone rubber which offering a much lower compression set which reduces engine sagging over time. Silicone also withstands a very wide temperature range and is compatible with grease and oil. These mounts are not PMA'd or FAA approved and are for use on experimental aircraft only. Not an approved replacement for Lycoming 71032 bushings. Sold in set of 8 bushings.

P/N 08-00662 ... \$52.75 /Set

## LORD ENGINE MOUNTS FOR ULTRALIGHTS



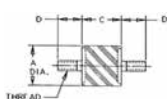
All altitude mounts for vibration isolation and shock prevention in all directions. Available in soft, medium, or hard rubber.  
 Soft.....P/N 08-07049 .....\$33.55  
 Medium .....P/N 08-01013 .....\$33.55  
 Hard .....P/N 08-07050 .....\$25.50  
 Snubbing Washer .....P/N 9810145-01804 ...\$2.75

## ENGINE MOUNTS FOR PIPERS

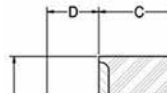


Description	Part No.	Price
J-3 Continental Engine Mount - Piper (J-3 (Continental 65 hp), L-4)	05-00873	\$1,050.00
PA-11 Engine Mount - Piper PA-11 with Continental C90 engine)	05-00874	\$942.00
C-90 Continental Engine Mount - Piper PA-18 (Continental C-90)	05-22398	\$1,252.00
PA-16 Engine Mount U11786-000 - Piper PA-16, PA-20 (Lycoming, 115-125hp, 1950-51)	05-21966	\$1,473.00
PA-15/17 Engine Mount L11824-000 - Piper PA-15, PA-17 with Lycoming engine	05-21967	\$741.00
PA-18 Lycoming Engine Mount 125hp - Piper PA-18 125hp Lycoming engine	05-22399	\$1,034.00

## LORD RUBBER ENGINE MOUNT



LORD Flex-Bolt™ Sandwich Mounts are designed to protect equipment and machinery against damaging vibration. These mounts provide high load-carrying capacity and assure long life. Provide lowest cost mounting systems which are compact, lightweight, easy to install and maintenance-free.



Model	A	C	D	Thread	Part No.	Price
J-4624-45	1.00	.75	.75	5/16-18	10-01557	\$15.50
J-4624-57	1.00	.75	.62	5/16-18	08-07196	\$11.85

## LORD PLATFORM MOUNT



Lord Platform Mounts provide effective isolation against vibration. The contour of the flexing element was developed to provide uniform stress distribution. This, plus high strength bonding and the use of specially compounded elastomers, provides maximum service life. 200 Steel Holder 45 lb.

P/N 15-05499 .....\$120.75

## URETHANE CONE STYLE ENGINE MOUNT BUSHINGS



These engine mount bushings are made of a special urethane formula which outlasts most other mounts. They have been in use on smaller 4 cylinder

Lycoming engines from the 0-235 series to the GO-480 series for years, and are now available to the experimental aircraft market.

Specifications: These cone type mounts are applicable to the following engine models: O-235-C1, -C1B, -C2A, -C2C, -F, -F1B, -G2A, O-290-D, -D2, -D2B, -D2C, O-340-A, O-340-B, O-320-A2A, -A2B, -A2C, -A3A, -A3B, -A3C, -B2A, -B3A, -B3B, -B3C, -E1A, -E2A, IO-320-E2A, O-435-A, -A2 GO-480-B, -B1A6, -B1B, -B1C, -B1D, -C1B6, -D1A, -F6, -F1A6, -F2A6, -F4A6, -G1A6, -G1D6, -G2D6, -G2F6, -G1H6, -G1J6.

P/N 08-07392 .....\$6.95

EP