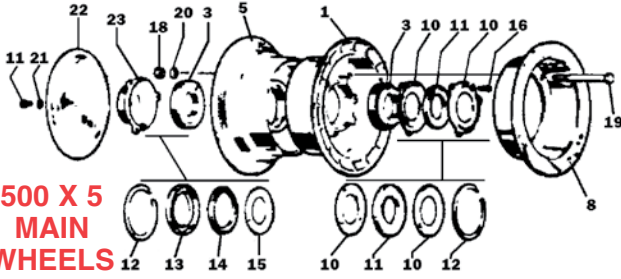
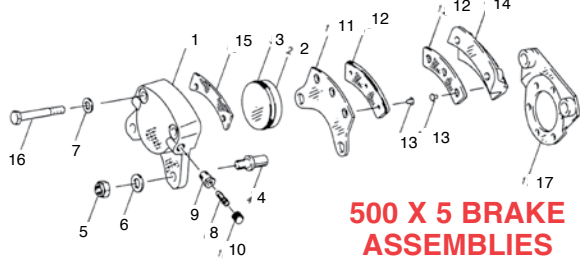


# WHEELS & BRAKES

## FAA-APPROVED CLEVELAND WHFFS & BRAKES



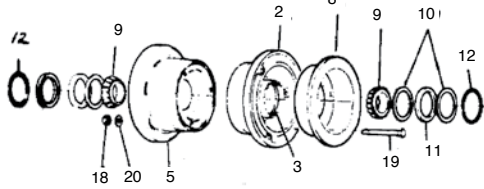
**500 X 5  
MAIN  
WHEELS**



**500 X 5 BRAKE  
ASSEMBLIES**

FIG	Cleveland P/N	Part No.	Description	Assembly Number	Qty. Per Assembly						Price Each	
					40-12	40-12A	40-12B	40-19	40-19A	40-19B		40-78
1	161-5	161-00500	Inner Wheel Half Assy.	1	1	1						\$1,204.00
	161-03100	161-03100	Inner Wheel Half Assy.							1		\$717.00
	161-04100	161-04100	Inner Wheel Half Assy.								1	\$1,356.00
3	08231	214-00300	Cup-Bearing	1	1	1	1	1	1	1	1	\$45.50
5	162-00500	162-00500	Outer Wheel Half Assy.	1	1	1						\$1,480.00
	162-02800	162-02800	Outer Wheel Half Assy.							1		\$689.00
	162-03900	162-03900	Outer Wheel Half Assy.								1	\$1,511.00
3	08231	214-00300	Cup-Bearing	1	1	1	1	1	1	1	1	\$45.50
*	217-00100	217-00100	Grommet								1	\$15.50
*	101-07200	101-07200	"O" Ring	1	1	1						\$382.00
8	164-00400	164-00400	Brake Disc Assy.	1	1	1	1	1	1			\$425.00
	164-17	164-01700	Brake Disc Assy.								1	\$244.95
*	08125	214-00400	Cone-Bearing	2	2	2	2	2	2	2	2	\$82.75
19	AN4-31A	103-10800	Bolt	3	3	3	3	3	3			\$0.80
	AN4-22A	103-10500	Bolt							3	3	\$0.56
20	AN960-416	095-10400	Washer	6	6	6	6	6	6	3	3	\$0.09
18	AN365-428A	094-10300	Nut	3	3	3	3	3	3	3	3	\$0.19
10	153-00800	153-00800	Ring-Grease Seal	2	2	4	2	4	4	4	4	\$24.60
12	155-00200	155-00200	Ring-Snap	2	2	2	2	2	2	2	2	\$30.60
11	154-00600	154-00600	Felt-Grease Seal	1	1	2	1	1	2	2	2	\$18.55
23	158-00500	158-00500	Cap-Hub	1	1	1	1					\$558.00
17	102-25100	102-25100	Screw	1	1	1	1	1				\$18.80
21	095-15400	095-15400	Washer-Lock	1	1	1	1	1				\$15.50
22	157-00500	157-00500	Shield-Dust	1		1						\$197.75

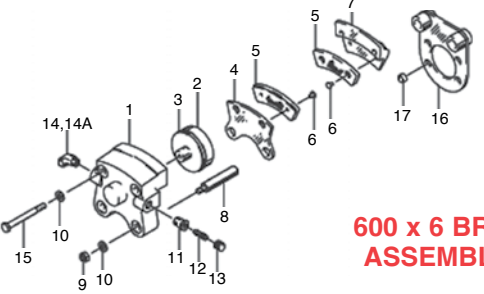
**MODEL NO. 05-13459** wheel with brake disc and 1-1/4" dia. bearings as used on Cessna 150.....P/N 05-13459.....**\$2,974.00**  
**MODEL NO. 40-78B**.....P/N 40-78B.....**\$2,245.00**



**600 X 6 MAIN WHEELS**

FIG	Cleveland P/N	Part No.	Description	Assembly Number	Qty. Per Assembly				Price Each
					30-9	30-9A(2)	30-9C	30-9D	
	91-00702	06-01203	Cylinder Assembly		1			1	\$1,074.00
	91-04800	06-01204	Cylinder Assembly			1	1		----
	91-17401	06-01205	Cylinder Assembly					1	\$950.00
1	61-00601	061-00601	Cylinder		1			1	\$892.00
	61-03901	061-03901	Cylinder			1	1		----
	92-00200	06-01206	Piston		1	1	1	1	\$188.75
2	79-00300	062-00300	Piston		1	1	1	1	\$170.80
3	101-02300	AN6227B-23	O-ring (MS28775-218)		1	1	1	1	\$2.13
4	069-00400	069-00400	Anchor bolt		2	2	2	2	\$48.90
5	94-10300	AN365-428A	Nut (MS21044-N4)		2	2	2	2	\$0.19
6	95-10400	095-10400	Washer (AN960-4-16)		2	2	2	2	\$0.09
7	95-10200	095-10200	Washer (AN960-416L)		2	2	2	2	\$0.04
8	079-00300	079-00300	Screw-Bleeder		1	1	1	1	\$21.50
9	081-00100	081-00100	Seat-Bleeder		1	1	1	1	\$38.70
10	183-00100	183-00100	Cap-Bleeder		1	1	1	1	\$7.85
	073-00300	073-00300	Pressure Plate Assy.		1	1	1	1	\$274.95
11	063-00500	063-00500	Pressure Plate		1	1	1	1	\$197.75
12	066-10600	066-10600	Lining		1	1	1	1	\$15.75
13	15-00200	105-00200	Rivet		3	3	3	3	----
	074-00200	074-00200	Back Plate Assembly		1	1	1	1	\$442.00
14	064-00500	064-00500	Back Plate		1	1	1	1	\$203.95
12	66-106	066-10600	Lining		1	1	1	1	\$15.75
13	15-00200	105-00200	Rivet		3	3	3	3	----
15	68-00401	06-01196	Shim						\$705.00
16	06-00011	103-12100	Bolt		2	2	2	2	\$1.25
		103-11500	Bolt					2	----
17	075-00800	075-00800	Torque Plate Assembly		1	1	1	1	\$465.00
	75-19300	06-01201	Torque Plate Assembly					1	\$998.00

**MODEL NO. 30-9** used with wheel 40-78..P/N 30-9.....**\$946.00**



**600 X 6 BRAKE  
ASSEMBLIES**

FIG	Cleveland P/N	Part Number	Description	Assembly Number	Qty. Per Assembly					Price Ea.
					40-97	40-97A	40-97B	40-97C	40-97D	
2	161-03000	161-03000	Inner Wheel Half Assy.	1	1	1	1	1	1	\$568.00
	161-02100	161-02100	Inner Wheel Half Assy.						1	\$1,616.00
3	13836	214-00100	Cup-Bearing	1	1	1	1	1	1	\$49.85
5	162-02700	162-02700	Outer Wheel Half Assy.	1	1	1	1	1		\$575.00
	162-01900	162-01900	Outer Wheel Half Assy.						1	\$1,868.00
	13836	214-00100	Cup-Bearing	1	1	1	1	1	1	\$49.85
8	164-26A	164-02601	Brake Disc Assy.	1	1	1	1	1	1	\$183.75
	164-02800	164-02800	Brake Disc Assy.						1	\$337.00
9	214-00200	214-00200	Cone-Bearing	2	2	2	2	2	2	\$162.75
19	AN5-35A	103-20400	Bolt	3	3	3	3	3		\$1.19
	AN4-37A	103-11200	Bolt						6	\$1.21
20	AN960-516	095-10500	Washer	3	3	3	3	3		\$0.08
	AN960-416L	095-10200	Washer					6		\$0.04
18	AN365-524A	094-10400	Nut	3	3	3	3	3		\$0.27
	AN365-428A	094-10300	Nut						6	\$0.19
10	153-00400	153-00400	Ring-Grease Seal	2	2	2	2	2		\$25.50
	153-00300	153-00300	Ring-Grease Seal	1	1	2	1	1		\$25.50
	153-01500	153-01500	Ring-Grease Seal	1	1	2	1	1		\$31.85
	158-00300	158-00300	Cap-Hub						1	\$113.75
11	154-00300	154-00300	Felt-Grease Seal	1	1	1	1	1	1	\$15.95
	154-01300	154-01300	Felt-Grease Seal	1	1	2	1	1		\$15.95
12	155-00100	155-00100	Ring Snap	2	2	2	2	2	2	\$18.50
	154-12400	06-01778	Molded Grease Seal		1					\$42.85
	154-12000	06-01782	Molded Grease Seal		1					\$47.90

**MODEL NO. 40-97A** wheel with brake disc and 1.5" dia. bearings fits Cessna 172, 182.....P/N 40-97A.....**\$1,159.00**

FIG	Part No.	Cleveland No.	Description	Assembly No. & qty. per assembly					Price
				30-56	30-56A	30-63	30-63A	30-63D	
	091-02200	091-02200	Cylinder Assy.	----	----	1	1	1	\$1,028.00
1	061-01900	061-01900	Cylinder	1	1	1	1	1	\$457.00
2	062-01600	062-01600	Piston	1	1	1	1	1	\$137.80
3	101-05200	101-05200	"O" Ring	1	1	1	1	1	----
	073-01100	073-01100	Press. Plate Assy.	1	1	1	1	1	\$174.75
4	063-01200	063-01200	Plate-Press.	1	1	1	1	1	\$148.75
5	66-105	66-155	Lining	1	1	1	1	1	\$17.75
6	105-00200	105-00200	Rivet - Cleveland 9/32" Long	2	2	2	2	2	\$0.85
	074-01000	074-01000	Back Plate Assy.	1	1	1	1	1	\$272.95
7	064-01500	064-01500	Plate-Back	1	1	1	1	1	\$163.75
8	069-00400	069-00400	Bolt-Anchor	2	2	2	2	2	\$48.90
9	AN365-428A	094-10300	Nut	2	2	2	2	2	\$0.19
10	AN960-416L	095-10200	Washer	4	4	4	4	4	\$0.04
11	081-00100	081-00100	Seat-Bleeder	1	1	1	1	1	\$38.70
12	079-00300	079-00300	Screw Bleeder	1	1	1	1	1	\$21.50
13	183-00100	183-00100	Cap-Bleeder	1	1	1	1	1	\$7.85
14	AN823-4D	104-00500	Fitting Tube	1	1	----	----	----	\$11.60
15	AN4H-17A	103-11600	Bolt-Lock	2	2	2	2	2	\$0.87
16	075-03700	075-03700	Torque Plate Assy.	----	1	1	1	1	\$470.00
17	145-01000	145-01000	Bushing	2	----	2	2	2	\$47.60

**MODEL No. 30-63A** used with wheel 40-97A..P/N 30-63A.....**\$919.00**  
**MODEL No. 30-52 Brake Assy**.....P/N 30-52.....**\$1,323.00**  
**MODEL No. 30-52N Brake Assy**.....P/N 06-00106.....**\$1,395.00**

