

JACK HOUSINGS AND MOUNTS

MIC & PHONE JACK HOUSINGS



SINGLE HOLE BLACK ALUMINUM HOUSING
Single-hole aluminum housing for single cord headset jacks (Nexus Jack TJT-120).

Description	Part No.	Price
Single Hole Black	11-09989	---
Single Hole Beige	11-09990	---
Single Hole Aluminum	11-09991	---

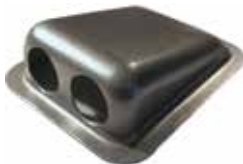


SINGLE HOLE MIC & PHONE JACK HOUSING - HOUSING
(1) hole surface mounted. For mic or phone jack. Hole diameter .375 with key. Mount with 4 small screws on outer flange.
P/N 11-10747



2 HOLE SURFACE MOUNTED MIC & PHONE JACK HOUSING
Mounts flush to any flat surface. Heat-treated aluminum with a powder coat finish. Jacks not included. (See electrical section).

Description	Part No.	Price
Surface Mount, Black	10-01595	---
Surface Mount, Beige	11-01120	---
Surface Mount, Aluminum	11-01130	---



TWO HOLE ALUMINUM HOUSING
Two-hole aluminum housing (no paint) for single cord headset jacks / Nexus Jack TJT-120.

Description	Part No.	Price
Aluminum no Paint	11-09994	---
Black	11-09992	---
Two Hole Aluminum	11-09993	---



2 HOLE RECESSED MIC & PHONE JACK HOUSINGS - Powder coat finish. Comes with a clamp to hold housing securely in place. Jacks not included. Size: 3.0" x 3.75" x 1".

Description	Part No.	Price
Recessed Mount, Black	11-01140	---
Recessed Flush Mount, Beige	11-01150	---
Recessed Flush Mount, Aluminum	11-01160	---



4 HOLE SURFACE MOUNTED MIC & PHONE JACK HOUSING - If panel space is scarce or you'd prefer to locate your headphone jacks in a more convenient spot, this housing is perfect. Mounts flush to any flat surface. Heat-treated aluminum with a powder coat finish. Jacks not included. (See electrical section). **Housing only!**

Description	Part No.	Price
Black wrinkle finish	11-01195	---
Tan wrinkle finish (Pictured)	11-00365	---
Aluminum (unpainted with holes)	11-00366	---
Aluminum (unpainted NO holes)	11-00367	---



4 HOLE RECESSED MIC & PHONE JACK HOUSINGS - Modified to allow plugs to enter from the opposite side, being recessed they are out of the way. When jacks are plugged in they are flush with the edge of the housing. Made of aluminum, with a powder coat finish. Comes bagged with housing, clamp, mounting screw. Dims: 4"W x 5"L x 1.06"H; Cutout req.: 3.25"W x 4.43"L

Description	Part No.	Price
Black wrinkle finish	11-01939	---
Tan wrinkle finish	11-01940	---
Aluminum (unpainted with holes)	11-01941	---



4 HOLE NEXUS FRONT MOUNT JACK HOUSINGS - Housing- (4) hole .687 dia. surface mounted for nexus jack #TJT-120

Description	Part No.	Price
Black	11-11527	---
Beige	11-11528	---
Aluminum	11-11529	---

MIC / PHONE JACK MOUNTING BRACKET

Mic & Phone Jack Bracket 90 degree under the dash. Also for switches, fuses etc. . A sturdy and attractive mount, sides are formed to hide wires, .063 thick heat-treated aluminum. Black wrinkle powder coat finish. Five styles to choose from for most any installation. Easily installed.



MIC OR PHONE JACK MOUNT 1 HOLE - 1) Hole for either Mic or Phone Mounting Bracket Dimensions- 1.5w x 1.5h x 1.0 deep. Black wrinkle powder coat finish. P/N 11-01170



MIC OR PHONE JACK MOUNT 2 HOLE - (2) Hole Mic & Phone Mounting Bracket Dimensions- 2.3w x 1.5h x 1.0 deep. Black wrinkle powder coat finish P/N 11-01180



MIC OR PHONE JACK MOUNT VERTICAL 4 HOLE - Bracket- (4) Hole Vertical for Mic & Phone Dimensions- 2.3w x 2.5h x 1.0 deep. P/N 11-01190



MIC OR PHONE JACK MOUNT HORIZONTAL 4 HOLE - Bracket- (4) hole horizontal for either Mic or Phone Dimensions- 4.5w x 1.5h x 1.0 deep. P/N 11-01942

MOUNTINGS FOR BOSE LEMO HOUSINGS



Metal housing available in raw Aluminum, Black or Beige. Designed to be utilized with the BOSE 6 Pin Lemo Jack #323172-0010. Can mount with (4) small screws on outer flange. Dimensions: W2.9" x L3.56" x H1.06". Weight: 22 grams. Note: Hardware not included.

Description	Part No.	Price
Surface Mounted Housing 1 Hole LEMO Aluminum	11-16194	---
Surface Mounted Housing 1 Hole LEMO Black	11-16196	---
Surface Mounted Housing 1 Hole LEMO Beige	11-16197	---
Surface Mounted Housing 2 Hole LEMO Aluminum	11-16201	---
Surface Mounted Housing 2 Hole LEMO Black	11-16202	---
Surface Mounted Housing 2 Hole LEMO Beige	11-16203	---
Recessed Mounted Housing 1 Hole LEMO Aluminum	11-16198	---
Recessed Mounted Housing 1 Hole LEMO Black	11-16199	---
Recessed Mounted Housing 1 Hole LEMO Beige	11-16200	---
Recessed Mounted Housing 2 Hole LEMO Aluminum	11-16204	---
Recessed Mounted Housing 2 Hole LEMO Black	11-16209	---
Recessed Mounted Housing 2 Hole LEMO Beige	11-16210	---

AV