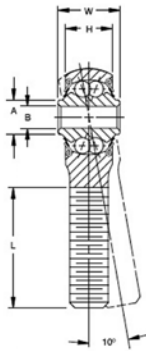
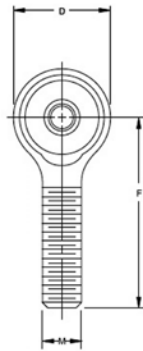


# BEARINGS

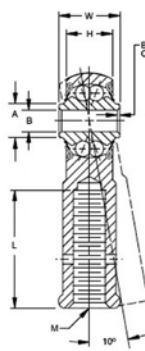
**AN 946  
MALE THREADED SHANK**



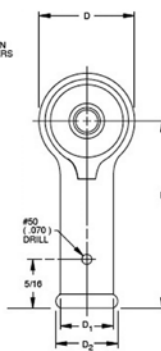
**MS 21151**



**AN 951  
FEMALE THREADED SHANK**



**MS 21153**



**AN948 HOLLOW SHANK  
SOLID SHANK**



**MS21152  
MS21150**



Bearing No.	MS Dash No.	B	D	W	H	A	F	G	L	J	K	M Thread Or Drill Size Inches		Balls		Lbs. Approx.	Weight Type Seal	Price Each
		Bore +0.0000 -0.0005 In.	Outside Diam. +0.010 -0.010 In.	Width Inner Ring +0.000 -0.010 In.	Width Outer Ring +0.010 -0.010 In.	Shoulder Diam. Inner Ring (Approx.) In.	Bore Center to end of Shank +0.010 -0.010 In.	Overall Dimension +0.010 -0.010 In.	Thread Length of Shank Hole Depth In.	Bead or Hex Diam. Across Flats In.	Shank Diam. +0.010 -0.010 In.	Size	Pitch Diam.	No.	Size			

## MALE THREAD - MS 21151

Precision series. Double row, ball, self-aligning. 10° permissible misalignment in either direction. These bearings are manufactured with an internal play of .0004 in. (.010mm) max. Inner and outer raceway surface finish = 8 micro in. AA max. Equipped with PTFE seals. Exposed surfaces except bore, cap, and seals are cadmium plated. Outer shank – 90,000 psi min. tensile strength. Prelubricated (refer to nomenclature page)

REP3ML3	-1	.1900	.781	.437	.328	.281	1.375	1.766	.750			10-32	.1697	20	1/8"	.04	Solid Seal	---
												LH	.1667					
												10-32	.1697					
REP3MR3	-2	.1900	.781	.437	.328	.281	1.375	1.766	.750			RH	.1667	20	1/8"	.04	Solid Seal	---
												3/8"-24	.3479					
REP3M6A	-3	.1900	.969	.500	.407	.304	2.031	2.516	1.313			RH	.3449	24	1/8"	.05	Solid Seal	---
												3/8"-24	.3479					
REP3M6-2N	-4	.1900	.781	.437	.328	.281	1.375	1.766	.750			RH	.3449	20	1/8"	.05	Solid Seal	---
												3/8"-24	.3479					
REP4M6	-8	.2500	.938	.593	.438	.345	1.875	2.344	1.125			RH	.3449	22	5/32"	.07	Plyo-Seal	---
												3/8"-24	.3479					
REP4ML6	-9	.2500	.938	.593	.438	.345	1.875	2.344	1.125			LH	.3449	22	5/32"	.07	Plyo-Seal	---
REP5M6	-10	.3125	1.25	.870	.686	.506	2.438	1.563	3/8-24			3/8"-24	.4050			.24		---

## FEMALE THREAD - MS 21153

Precision series. Double row, ball, self-aligning. 10° permissible misalignment in either direction. These bearings are manufactured with an internal play of .0004 in. (.010mm) max. Inner and outer raceway surface finish = 8 micro in. AA max. Equipped with PTFE seals. Exposed surfaces except bore, cap, and seals are cadmium plated. Outer shank – 90,000 psi min. tensile strength. Prelubricated (refer to nomenclature page)

												1/4"-28	.2298					
REP3N*	-1	.1900	.781	.437	.328	.281	1.375	1.766	.750	.438	.375	RH	.2268	20	1/8"	.05	Plyo-Seal	---
												5/16"-24	.2884					
REP3N2***	-2	.1900	.781	.437	.328	.281	1.375	1.766	.750	.438	.438	RH	.2854	20	1/8"	.06	Plyo-Seal	---
												1/4"-28						
REP3F4	-3	.1900	.781	.500	.328	.281	1.375	1.766	.750	.438	.375	RH	.2268	20	1/8"	.06	Solid Seal	---
												5/16"-24	.2884					
REP4F5	-6	.2500	.938	.593	.438	.345	1.469	1.938	.750	.438	.438	RH	.2854	22	5/32"	.07	Plyo-Seal	---

## HOLLOW SHANK - MS 21152

REP3H5**	-1	.1900	.781	.437	.328	.281	1.375	1.766	.875		.435		.272	20	1/8"	.06	Plyo-Seal	---
RE4H6																	Solid Seal	---
REP4H6	-2	.2500	.938	.593	.438	.345	1.875	2.344	1.219		.625		.386	22	5/32"	.12	Plyo-Seal	---
REP4H8	-3	.2500	.938	.593	.438	.345	1.625	2.093	.875		.625	33/64	.515	22	5/32"	.08	Plyo-Seal	---

## SOLID SHANK MS21150

REP3S7	-1	.19	.791	.437	.328	.281	1375				.430		SOLID	22	5/32"	.07	Plyo-Seal	---
REP4S10	-2	.2500	.938	.593	.438	.345	1.875	2.344			.625		SOLID	22	5/32"	.16	Plyo-Seal	---

\*Dimensionally Same as Heim F34-14

\*\*Dimensionally Same as Heim F31-14

\*\*\*Dimensionally Same as Heim F35-14

Bearings with the letter "P" in part number are new manufacture, with Plyoseals.

Bearings without the letter "P" in part number are new surplus, with solid metal seals.