

# FUEL VALVES – FUEL SUPPLIES – PRIMERS



## FUEL FLOW VALVE

Designed for tank installation. Similar to above but without built-in filter. 90° rotation for ON-OFF. Has standard 1/4" barb outlet tube.

P/N 05-01041 -----



## FUEL FLOW VALVE

Twin-tank fuel selector valve. 3 positions: LEFT-OFF-RIGHT. LEFT and RIGHT positions are 90° either side of OFF. Panel mount. This unit if the handle is on the top is: • 2" Top to Bottom • 2-7/8" From Side to Side • Requires a 9/16" Diameter Hole in the Panel • Uses a 1/4" ID Fuel Line • Has a 1/4" Turn Right to Left or to the Off Position.....P/N 05-01042 -----



## FUEL FLOW VALVE

Panel mounted fuel on-off.

P/N 05-01043 -----



## FUEL TANK VALVE 90 DEGREE WITH GROMMET

Standard replacement valve and grommet for plastic or Quicksilver type fuel tanks. Right angle valve shut-off with a 1/4 turn of the handle. Requires 33/64" hole in tank. Barb end accepts any 1/4" i.d. fuel line. Supplied with Grommet. Weight 2 oz.

P/N 15-05334 -----



## BANJO FITTING

This can be rotated through 360° then tightened and safety locked. Excellent for applications where space was limited. It can really be described as an adjustable 90° elbow fitting.....P/N 05-29565 -----



## FUEL FLOW ELBOW

Bushed 90° tank fitting with standard 1/4" barb outlet. Requires Rubber Bushing P/N 05-01039.

P/N 05-01045 -----



## 90 DEGREE FUEL TANK ACCESS ELBOW

Bushed 90° tank fitting with standard 1/4" barb outlet and 1/4" barb in the tank Requires Rubber Bushing (P/N 05-01039) .....P/N 04-02163 -----



## RUBBER BUSHING

Required for installation of Fuel Flow Elbow described above .....P/N 05-01039 -----



05-01035

## QUICK-DISCONNECT FUEL LINE FITTINGS

Complete sets are furnished with both male and female units. Available in both panel mount (left) and in-line (center) styles, with or without internal automatic fuel shut-off. (1/4" tubing). The O-rings are made of Viton Synthetic rubber which is compatible with alcohol based fuels.

Excluding P/N: 05-01038 (Buna-N Rubber)



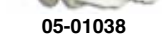
05-01037

In-line with shut-off .....P/N 05-01035 -----

In-line without shut-off .....P/N 05-01036 -----

Panel mount with shut-off.....P/N 05-01037 -----

Panel mount without shut-off...P/N 05-01038 -----



05-01038



## PRIMER BULB

Install between fuel tank and engine. A few squeezes prime your engine for easy starting. Primer Bulb 1/4" Tube Fit - Lg. (7" x 2") .....P/N 05-03690 -----



## PRIMER KIT

Everything you need to add a plunger-type primer system to your aircraft. The kit includes the plunger, a reducer "T" fitting, 1/8" barb "T" fitting, and 10 feet of 1/8" urethane fuel line.

P/N 05-01047 -----



## ACS PRIMER

Formerly manufactured by Gerdes Products, this primer has an anodized, all aluminum body and an engraved aluminum knob. The inlet and outlet ports are located on the sides of the pump and both are 1/8" pipe thread. Overall length is 3-5/8" and weight is 3.5 oz. New manufacture. Current inlet and outlet locations were changed from original design on 10-27-16. Made in USA. **Note:** 2 O-Rings are used per primer. For overhaul, customer will need quantity 2 of 05-19920. See Accessories.

P/N 05-19920 -----

Replacement O-Ring .....P/N 05-11936 -----



## McFARLANE FUEL PRIMER

• Fuel Primer for Cessna Aircraft • FAA-PMA approved for Cessna 150 thru 337 models

### Features:

• Improved seal design for consistent operation • Added features for smoother actuation and wear resistance .....P/N 05-27388 -----

## SEE WEBSITE FOR AIRCRAFT ELIGIBILITY



## ELECTRIC SOLENOID ENGINE PRIMER VALVE

These normally closed 2-way valves are direct acting and have only two moving parts, a viton plunger and stainless steel spring. Can be installed in any position and are easy to inspect without removing from the line. Pipe size is 1/8" NPT. Orifice dia. 1/8". Wt. 5 oz. #1 port is out, #2 port is in. Will handle max. PSI of 60.

**Note:** Not approved for aircraft usage

**Mounting Bracket** - A universal stainless steel mounting bracket for the 1/8" NPT valves may be ordered separately. The mounting bracket can be assembled to the valve body utilizing the body mounting holes

2V Solenoid VLV 20CC02PV4B2A .....P/N 05-04368 -----

24V Solenoid VLV 20CC02PV4B2B .....P/N 05-04369 -----

Solenoid Mounting Bracket 4K007 .....P/N 05-04370 -----



## PRIMER OVERHAUL KIT

Restoring primer pump operation - The kit is replaces the worn O-rings (2) on the primer pump used on non-fuel injected engine installations. The primer seals frequently are not re-lubricated until someone complains the primer isn't working or the engine is hard starting. This is most evident by the pump being hard or stiff to operate. Generally speaking, by the time the pump stops performing, the seals are worn (to the point that lube is of little value) and must be replaced. The kit contains the two O-rings, a packet of Seal Lube, and detailed instructions.

P/N 05-03637 -----



## PRIMER LINE

Polyurethane tubing, may ship in either translucent pink or clear in color. 1/8" ID. For primer systems. Connects engine pulse outlet to fuel pump pulse inlet.

P/N 05-01050 -----/ft.



## PULSE LINE

Connects engine pulse outlet to fuel pump pulse inlet. Outside Diameter: 3/8". Inside Diameter: 1/4". Thickness of the Wall: 3/32"

P/N 05-01063 -----/ft.



## FUEL LINE SPLITTERS/JOINERS

Perfect for feeding from 2 tanks, or for feeding two carburetors from 1 tank. All have standard barbed ends. Made of Delrin.

"T" type, 1/4" .....P/N 05-01051 -----

"Y" type, 1/4" .....P/N 05-01052 -----

"T" type, 1/8" .....P/N 05-01053 -----

AP