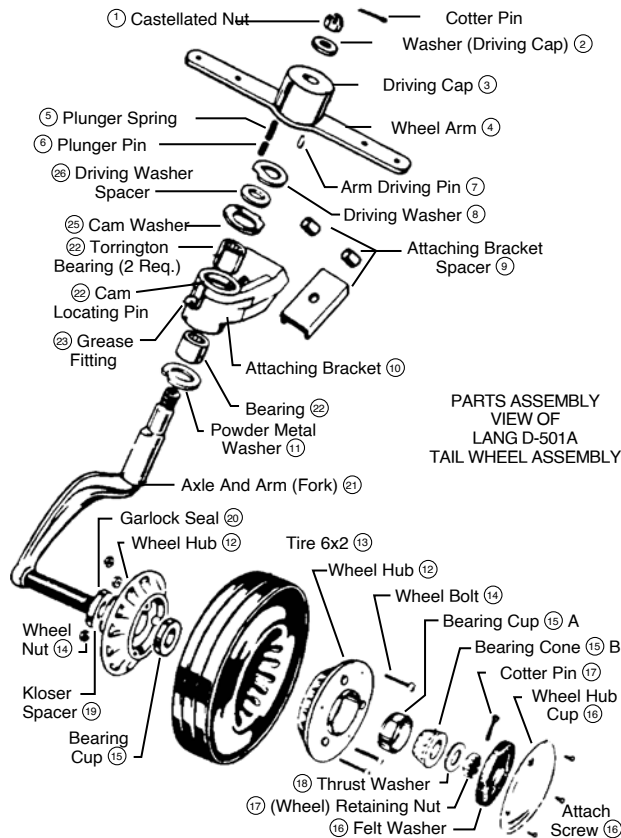


TAILWHEELS

LANG TAILWHEEL PARTS



Ref #	Lang No.	Qty	Part No.	Price
1&2	A-501, A521	1	06-13601	---
3,5,6,7	06-13637, 06-13656, A-513	1	06-01570	---
4	A-504	1	06-13604	---
8	A-509	1	06-13608	---
9	A-512, A560-1, A560-2	1	06-13609	---
11	A-516	1	06-13611	---
12	A-544, A545	2	06-13800	---
13	A-590	1	06-15800	---
14	A-548, A549	3	06-13614	---
15A	A-518	2	13287	---
15B	A-519	2	13286	---
16	A-522, A-523 & A-524	1	06-13600	---
17	A-521	1	06-13617	---
18	A-531	1	06-13618	---
19	A-546	1	06-13619	---
20	A-547	1	06-13620	---
21	C-503	1	06-13621	---
22	A-554	2	06-13622	---
23	A-525	1	06-13623	---
25	A-511	1	06-13625	---
26	A-510	1	06-13626	---
--	(1) C501, (1) A508, (1) A525, (2) A554	1	06-03155	---

Hub Assembly (2 #12 Hub Halves, 3 #14 bolts & Nuts) P/N 06-13800 ---
 Hub Assembly with Bearing Cups.....P/N 06-13900 ---
 Wheel Assembly (Hub Assembly & 2 Bearing Cups & Cones) P/N 06-14000 ---
 Wheel & Tire Ass'y (Wheel Ass'y & 6 x 2 Tire) P/N 06-14100 ---

TAILWHEEL SPRING NON-PMA PART



ABI-3239-1 Scott 3200 tailwheel spring.
 Non-PMA partP/N 05-27212 ---

THE LANG TAILWHEEL ASSEMBLY

THE ONLY TAILWHEEL TO MEET THE EXACTING REQUIREMENTS

OF THE CHRISTEN EAGLES - The Lang Model D-501-A Tailwheel is full swivel, fully automatic and steerable. It is impossible to throw the Lang tailwheel into full swivel unintentionally regardless of rough field conditions or cross winds. This tailwheel will not lock in any position except steerable, but releases easily when plane is pushed sideways or backwards by hand or when maneuvering plane on ground using brakes. The Lang tailwheel fits both 1-1/4" and 1-1/2" leaf springs. Drop forged, heat-treated 4130 chromoly steel fork of single arm type. The cast aluminum wheel is grease packed for 100 hours service. The 6 x 2.00 solid rubber tire has interior wire reinforcement for added strength. Manufactured by ACS Products Co. under FAA-PMA. The Lang tailwheel is FAA-approved for installation on many light aircraft including Aeronca 7AC, Piper J-3 and PA-12, Cessna 140, Luscombe and Taylorcraft. Comparable to Scott Model 2000. Wt. 6 Lbs.P/N 06-00398 ---



SHIMMY DAMPENER 3400 STRAIGHT ASSEMBLY

Compact and lightweight assembly that hydraulically dampens oscillations in the tailwheel to eliminate tailwheel shimmy and stabilize your tailwheel. **Features:** • Smoother landings • Reduced aircraft wear and tear • No headache installation & maintenance • Includes STC • Not compatible with the T3 Tailwheel Suspension • A long pawl tailwheel assembly

ABI StraightP/N 05-27237 ---
 ABI BentP/N 05-27235 ---
 Scott StraightP/N 05-27238 ---
 Scott BentP/N 05-27236 ---



SHIMMY DAMPENER 3450-23 STRAIGHT ASSEMBLY

Compact and lightweight assembly that hydraulically dampens oscillations in the tailwheel to eliminate tailwheel shimmy and stabilize your tailwheel. **Features:** • Smoother landings • Reduced aircraft wear and tear • No headache installation & maintenance • Includes STC • Not compatible with the T3 Tailwheel Suspension • A long pawl tailwheel assemblyP/N 05-27239 ---

REPLACEMENT WHEELS FOR HOMEBUILDER'S SPECIAL TAILWHEELS

Replacement wheels with tires & bearings for the Homebuilder's tailwheels shown above.
 4x1.5x5/8 BB Natural .. P/N 06-03500 ---
 4x1.5x3/8 BB Natural .. P/N 06-00067 ---
 6x2.125x5/8 Balloon* .. P/N 06-03600 ---
 *This is a solid Tire

LONG LIFE SEALED BALL BEARINGS
 These high quality bearings are superior to standard bearings furnished with homebuilder tailwheels P/N 06-00060 ---
***Can only be used on single arm 4" and 6" tailwheels.**



RE-BUILD KIT FOR 3400 SERIES TAILWHEEL

Re-Build Kit for 3400 Series Tailwheel P/N 05-27228 ---



TAILWHEEL BOLT FOR ABI 3200 / 3224A / 3200B SERIES

Bracket assembly is compatible with: 3200, 3224A, and 3200B seriesP/N 05-27215 ---



SPACER PLATE FOR ABI 3400B FORK

Spacer Plate; Compatible only on a ABI F2 3400B fork. 3 screws that hold this in place are MS24693S272. P/N 05-27216 ---



AIRFRAME ALASKA LONG PAWL

Compatible with 3200, 3224A, 3200-3, 3200B, 3200-3B, 3400, 3425-5, 3425-13, 3450(T), 3450-3, 3450-17, 3450-23, and 3400B series.

ABI-3200 AND ABI-3224A tailwheel assemblies and parts are direct replacements for the Scott 3200/3200A. Our assemblies and parts are FAA-PMA'd products and have STC's for well over 35 makes of Aircraft availableP/N 05-27213 ---