



EXCITERS

LEADS

IGNITERS



Table of Contents

Aircraft Applications	4
Air Transport	4
Corporate & Regional Aircraft	9
Helicopters	22
Igniters	27
APU Igniters	33
Leads	36
APU Leads	45
Exciters	47
Service Tools & Equipment	49
Index	52



PREFACE

This catalog is intended to be used as a reference guide for engine products designed and manufactured by Champion Aerospace LLC. Most of the products in this catalog have FAA-PMA approval. For questions concerning FAA-PMA approvals or application verifications, please contact your Champion Aerospace distributor or call Champion Product Support/Technical Services at 864-843-1162.

All rights reserved. The Champion Aerospace catalog may not be copied without prior permission from Champion Aerospace LLC.

The information and data contained in this catalog are from various sources. The information and data is subject to change. If the operator is in doubt, Champion Aerospace recommends referring to the engine OEM information or FAA-PMA documentation for approval verification.

Champion Aerospace assumes no liability in the result of damage related to the improper use of this catalog for other than informational purposes.



AIRBUS

AIRCRAFT TYPE	ENGINE MODEL	CHAMPION IGNITER P/N	OEM IGNITER P/N	CHAMPION LEAD P/N	OEM LEAD P/N	APU MODEL	CHAMPION IGNITER P/N	OEM APU IGNITER
A300-600	CF6-80C2A1/A3 (E)	CH31753A (T3) **	9392M95P05			331-250	CH31769	305766-1
A300-600	CF6-80C2A5 (E)	CH31904-2 **	9387M23P09	CH53566-1	1346M56P04 (O)	331-250	CH31769	305766-1
A300-600	PW4000	AA134S-1	709525	CH53551-1	50U683 (O)	331-250	CH31769	305766-1
A300-600	JT9D-7R4	AA134S-1	709525			331-250	CH31769	305766-1
A300-B2/B4	CF6-50C2 (E)	CH31843 (T3)	9101M37P71			TSCP700-5	FS153-1	369964-4
A300-B2/B4	CF6-50C2 (E)	CH31905	1305M52P09	CH53566-1	1346M56P04 (O)	TSCP700-5	FS153-1	369964-4
A310-200	CF6-80A3/A1 (E)	CH31843 (T3)	9101M37P71			331-250E	CH31769	305766-1
A310-200 (F)	CF6-80A3/A1 (E)	CH31905	1305M52P09	CH53566-1	1346M56P04 (O)	331-250E	CH31769	305766-1
A310-200, 300	JT9D-7R4	AA134S-1	709525			331-250	CH31769	305766-1
A310-200, 300	CF6-80C2A2 (E)	CH31772A **	9387M23P01	CH53566-1	1346M56P04 (O)	331-250E	CH31769	305766-1
A310-200, 300 (F)	CF6-80C2A2, A8 (E)	CH31904-2 **	9387M23P09	CH53566-1	1346M56P04 (O)	331-250E	CH31769	305766-1
A310-300	PW4152/4156	AA134S-1	709525	CH53551-1	50U683 (O)	331-250E	CH31769	305766-1
A318-100	CFM56-5B8,/P (E)	CH31900-6 ** CH31965 **	1374M13P11 1374M13P11	CH53569-1	9387M24P16 (O)	APS3200 131-9A (E)	CH38013 CH31921	160544-1 305766-4
	PW6000	N/A	N/A					
A319	CFM56-5A/5B,/P (E)	CH31900-6 ** CH31965 **	1374M13P11 1374M13P11 (O)	CH53569-1	9387M24P16 (O)	APS3200	CH38013	160544-1
(ALTAPU)						131-9A (E)	CH31921	305766-4
A319	CFM56-5B/2P (E) DAC	CH31900-6 ** CH31965 **	1374M13P11 1374M13P11 (O)	CH53569-3 (DAC)	9387M24P18 (O)	APS3200	CH38013	160544-1
(ALTAPU)						131-9A (E)	CH31921	305766-4
A319	V2500-A5	CH31964	JS100A1	CH53564	5U0072 (O)	APS3200	CH38013	160544-1
ALTAPU						131-9A (E)	CH31921	305766-4
A320	CFM56-5A/B (E)	CH31900-6 ** CH31965 **	1374M13P11 1374M13P11 (O)	CH53569-1	9387M24P16 (O)	APS3200	CH38013	160544-1
(ALTAPU)						36-300A	CH31801	3876131-1
(ALTAPU)						131-9A (E)	CH31921	305766-4
A320	CFM56-5B/2P (E) DAC	CH31900-6 ** CH31965 **	1374M13P11 1374M13P11 (O)	CH53569-3	9387M24P18 (O)	APS3200	CH38013	160544-1
(ALTAPU)						36-300A	CH31801	3876131-1
(ALTAPU)						131-9A (E)	CH31921	305766-4

* indicates that FAA-PMA is pending

**gasket included

(E) indicates exicter available for application

(O) equivalent OEM P/N. PMA by test and computation.

(T3) Pin Style

(T5) Button Style



AIRBUS (CONTINUED)

AIRCRAFT TYPE	ENGINE MODEL	CHAMPION IGNITER P/N	OEM IGNITER P/N	CHAMPION LEAD P/N	OEM LEAD P/N	APU MODEL	CHAMPION IGNITER P/N	OEM APU IGNITER
A320 (ALT APU) (ALT APU)	V2500-A5	CH31964	JS100A1 (O)	CH53564	5U0072 (O)	APS3200 36-300A 131-9A (E)	CH38013 CH31801 CH31921	160544-1 3876131-1 305766-4
A321 (ALT APU) (ALT APU)	CFM56-5B1/2/3 (E)	CH31900-6 ** CH31965 **	1374M13P11 1374M13P11 (O)	CH53569-1	9387M24P16 (O)	APS3200 36-300A 131-9A (E)	CH38013 CH31801 CH31921	160544-1 3876131-1 305766-4
A321 (ALT APU) (ALT APU)	CFM56-5B/2P (E) DAC	CH31900-6 ** CH31965 **	1374M13P11 1374M13P11 (O)	CH53569-3	9387M24P18 (O)	APS3200 36-300A 131-9A (E)	CH38013 CH31801 CH31921	160544-1 3876131-1 305766-4
A321 (ALT APU) (ALT APU)	V2500-A5	CH31964	JS100A1 (O)	CH53564	5U0072 (O)	APS3200 36-300A 131-9A (E)	CH38013 CH31801 CH31921	160544-1 3876131-1 305766-4
A330	CF6-80E1A1/4 (E)	CH31904-2 **	9387M23P09	CH53566-3	1346M56P07 (O)	331-350	CH34549	304634-2
A330	PW4168/PW4164	AA134S-1	709525	CH53551-1	5OU683 (O)	331-350	CH34549	304634-2
A330	TRENT 772	CH34736	L907030			331-350	CH34549	304634-2
A340-200 (ALT APU)	CFM56-5C (E)	CH31900-6 ** CH31965	1374M13P11 1374M13P11 (O)	CH53569-2	9387M24P17 (O)	331-350 331-600 (E)	CH34549 CH31921	304634-2 305766-4
A340-300 (ALT APU)	CFM56-5C2/3/4 (E)	CH31900-6 ** CH31965	1374M13P11 1374M13P11 (O)	CH53569-2	9387M24P17 (O)	331-350 331-600 (E)	CH34549 CH31921	304634-2 305766-4
A340-500,600	TRENT 553/556	CH34761	L907032			331-350	CH34549	304634-2
A380-800,800F	TRENT 900 (E)	CH34829	CH34829	CH53538-4	CH53538-4	PW980A	CH34511	3900274

NOTES:

* indicates that FAA-PMA is pending

**gasket included

(E) indicates exister available for application

(O) equivalent OEM P/N, PMA by test and computation.

(T3) Pin Style

(T5) Button Style



BOEING (INCLUDING MCDONNELL DOUGLAS)

AIRCRAFT TYPE	ENGINE MODEL	CHAMPION IGNITER P/N	OEM IGNITER P/N	CHAMPION LEAD P/N	OEM LEAD P/N	APU MODEL	CHAMPION IGNITER P/N	OEM APU IGNITER
DC8-70	CFM56-2C1 (E)	CH31706D (T3)	9276M36P05	85-98CK,D			CH31723 CH31824	369162 3888210-1
DC8-70	CFM56-2C1 (E)	CH31900-6 ** CH31965	1374M13P11 1374M13P11 (O)	85-98CK,D			CH31723 CH31824	369162 3888210-1
DC9	JT8D SERIES	AA72SA AA134S-1	487238 709525			85-98D SERIES	CH31723 CH31824	369162 3888210-1
MD/DC10-10 (F)	CF6-6,6D,6D1	AA138S-4B **	9101M37P36			TSCP-700	FS153-1	369964-4
DC10-15	CF6-45A2 (E)	CH31843 (T3)	9101M37P71			TSCP-700	FS153-1	369964-4
DC10-15	CF6-50C2/F (E)	CH31843 (T3)	9101M37P71			TSCP-700	FS153-1	369964-4
MD/DC10-30 (F)	CF6-50C,C1,C2	CH31843 (T3)	9101M37P71			TSCP-700	FS153-1	369964-4
DC10-40	JT9D-59A	AA134S-1	709525			TSCP-700	FS153-1	369964-4
MD11	CF6-80C2A3,D1F (E)	CH31772A **	9387M23P01	CH53566-1	1346M56P04 (O)	TSCP-700	FS153-1	369964-4
MD11	PW4000	AA134S-1	709525	CH53551-1	5OU683 (O)	TSCP-700	FS153-1	369964-4
MD80	JT8D-217, 219	AA72SA AA134S-1	487238 709525	CH53568-1 CH53568-2	5000471-01 (O) 5000472-01 (O)	36-280B 36-280D 85-98D SERIES	CH31801 CH34549 CH31723 CH31824	3876131-1 304634-2 369162 3888210-1
ALT APU)								
MD90-30	V2500/2528	CH31964	JS100A1 (O)			131-9D	CH34803	3888267-4
717-200	BR715 SERIES	CH34760-1 (LONG LIFE) Y242-5	CH34760-1 Y242-5			APS2100	CH38013	160544-1
727 (RE-ENG)	TAY 651-54	Y183-6	L912023			85-98,C/CK	CH31723 CH31824	369162 3888210-1
727-100,200	JT8D--7,9,15,17AR	AA72SA AA134S-1	487238 709525			85-98,C/CK	CH31723 CH31824	369162 3888210-1
737-100, 737-200	JT8D-7,9,15,17/A	AA72SA AA134S-1	487238 709525			85-98,C/CK, 85-129	CH31723 CH31824	369162 3888210-1
737-300,400,500	CFM56-3A,3B,3C1 (E)	CH31900-6 ** CH31965 **	1374M13P11 1374M13P11 (O)	CH53552-1 CH53552-2	9339M26P13 (O) 9339M26P14 (O)	85-129C-K, CK	CH31723 CH31824	369162 3888210-1
(ALT APU)						36-280B	CH31801	3876131-1
(ALT APU)						APS2000	CH38013	160544-1

* indicates that FAA-PMA is pending

**gasket included

(E) indicates exicter available for application

(O) equivalent OEM P/N. PMA by test and computation.

(T3) Pin Style

(T5) Button Style



BOEING (CONTINUED)

AIRCRAFT TYPE	ENGINE MODEL	CHAMPION IGNITER P/N	OEM IGNITER P/N	CHAMPION LEAD P/N	OEM LEAD P/N	APU MODEL	CHAMPION IGNITER P/N	OEM APU IGNITER
737-600,700,800,900	CFM56-7B, 7B (E)	CH31900-6 ** CH31965 **	1374M13P11 1374M13P11 (O)	CH53440	1853M13P01 (O)	131-9B (E)	CH31769	305766-1
737-600,700,800,900	CFM56-7B, 7B (E) DAC	CH31900-6 ** CH31965 **	1374M13P11 1374M13P11 (O)	CH53440-1 (DAC)	1853M13P04 (O)	131-9B (E)	CH31769	305766-1
747-100	JT9D-7A, 7Q	AA134S-1	709525			660-4/4R	FS118-1A	369949-1
747-100	CF6-45A2 (E)	CH31905	1305M52P09	CH53566-1	1346M56P04 (O)	660-4/4R	FS118-1A	369949-1
747-200,300	CF6-50C1/E1/C2/E2 (E)	CH31905	1305M52P09	CH53566-1	1346M56P04 (O)	660-4/4R	FS118-1A	369949-1
747-200,300	JT9D-7/7R4	AA134S1	709525			660-4/4R	FS118-1A	369949-1
747-200,300, 400	RB211-524 SERIES	YA211-25	L912018			660-4/4R	FS118-1A	369949-1
747-200,300	CF6-80C2/E (LEC) (E)	CH31904-2	9387M23P09			660-4/4R	FS118-1A	369949-1
747-200F (ALT APU)	CF6-50C1/E1/C2/E2 (E)	CH31905	1305M52P09	CH53566-1	1346M56P04 (O)	660-4/4R 331-200, 331-250	FS118-1A CH31547C CH31769	369949-1 369949-3 305766-1
747-400	CF6-80C2B (E)	CH31772A **	9387M23P01	CH53566-1	1346M56P04 (O)	PW901A	CH34511	3900274
747-400 (F)	PW4000/4100	AA134S-1	709525	CH53551-1	50U683 (O)	PW901A	CH34511	3900274
747-400	RB211-524G-T, H-T	CH34736	L907030			PW901A	CH34511	3900274
747SR	CF6-45A2 (E)	CH31843 (T3)	9101M37P71			660-4/4D/4R	FS118-1A	369949-1
747SR	CF6-45A2 (E)	CH31905	1305M52P09	CH53566-1	1346M56P04 (O)	660-4/4D/4R	FS118-1A	369949-1
757-200,300	PW2000	AA134S-1	709525	CH53556	1B7426 (O)	331-200	CH31547C CH31769	369949-3 305766-1
757-200,300	RB211-535	YA211-25	L912018			331-200	CH31547C CH31769	369949-3 305766-1
757-200,300	RB211-535E4/E4B "PHASE 5"	CH34743	L907031			331-200	CH31547C CH31769	369949-3 305766-1
767-100/200	CF6-50/80A (E)	CH31843 (T3)	9101M37P71			331-200	CH31547C CH31769	369949-3 305766-1
767-100/200	CF6-50/80A (E)	CH31905	1305M52P09	CH53566-1	1346M56P04 (O)	331-200	CH31547C CH31769	369949-3 305766-1
767-200/ER	JT9D-7R4	AA134S-1	709525			331-200	CH31547C CH31769	369949-3 305766-1

* indicates that FAA-PMA is pending

**gasket included

(E) indicates exister available for application

(O) equivalent OEM P/N. PMA by test and computation.

(T3) Pin Style

(T5) Button Style



BOEING (CONTINUED)

AIRCRAFT TYPE	ENGINE MODEL	CHAMPION IGNITER P/N	OEM IGNITER P/N	CHAMPION LEAD P/N	OEM LEAD P/N	APU MODEL	CHAMPION IGNITER P/N	OEM APU IGNITER
767-200/300ER	CF6-80A (E)	CH31905	1305M52P09	CH53566-1	1346M56P04 (O)	331-200	CH31547C CH31769	369949-3 305766-1
767-200/300ER	CF6-80C2B (E)	CH31772A **	9387M23P01	CH53566-1	1346M56P04 (O)	331-200	CH31547C CH31769	369949-3 305766-1
767-200/300ER/F	CF6-80C2B (E)	CH31904-2 **	9387M23P09	CH53566-1	1346M56P04 (O)	331-200	CH31547C CH31769	369949-3 305766-1
767-200/300ER	PW4050/56/60/62	AA134S-1	709525	CH53551-1	5OU683 (O)	331-200	CH31547C CH31769	369949-3 305766-1
767-300ER/EM	RB211-524H	YA211-25	L912018			331-200	CH31547C CH31769	369949-3 305766-1
767-400/ER	PW4060	AA134S-1	709525	CH53551-1	5OU683 (O)	331-400	CH31921	305766-4
767-400/ER	CF6-80C2B8F (E)	CH31772A **	9387M23P01	CH53566-1	1346M56P04 (O)	331-400	CH31921	305766-4
777-200,300/ER	GE90 (E)	CH31919 *	N/A			331-500B	CH34731	3888267-7
777-200,300/ER	PW4074/77/84/90	CH31923-5	51J015	CH53551-1	5OU683 (O)	331-500B	CH34731	3888267-7
777-200,300/ER	TRENT 800	CH34736	L907030			331-500B	CH34731	3888267-7
777-200,300/ER (ALT APU)						331-200	CH31769	305766-1
787	TRENT 1000 (E)	CH34851-1	CH34851-1	CH53571	CH53571	APS5000	N/A	

NOTES:

* indicates that FAA-PMA is pending

**gasket included

(E) indicates exicter available for application

(O) equivalent OEM P/N, PMA by test and computation.

(T3) Pin Style

(T5) Button Style



BOMBARDIER

AIRCRAFT TYPE	ENGINE MODEL	CHAMPION IGNITER P/N	OEM IGNITER P/N	CHAMPION LEAD P/N	OEM LEAD P/N	APU MODEL	CHAMPION IGNITER P/N	OEM APU IGNITER
CL-215T CL 300	PW123AF HTF7000 (E)	CH34817 CH34826-6	3055161-01 3038110-6	53335-01 53542-1	3117291-01 3038111-1	SAPHIR 20 36-150 (BD)	CH34313 CH34492	3888002-2 3888096-2
CL600	ALF502L (E)	CH34452A	2-300-732-05	53282 53283	2-303-025-02	36-100	CH34249	3888096-1
CL601-1A	CF34-1A, 3A	FHE256-10A	4048T30P06			36-100	CH34249	3888096-1
CL601-3A	CF34-3A	CH34661	4048T30P10			36-100	CH34249	3888096-1
CL601-3R	CF34-3B (E)	CH31858-1, -2	4096T38P10 (O)	CH53515-3 CH53513-4	4096T96P03 (O) 4096T96P04 (O)	36-100	CH34249	3888096-1
CL604	CF34-3B (E)	CH31858-1, -2	4096T38P10 (O)	CH53515-3 CH53513-4	4096T96P03 (O) 4096T96P04 (O)	36-150 (RJ)	CH34549	304634-2
CRJ-100	CF34-3A1, 3B1 (E)	CH31858-1, -2	4096T38P10 (O)	CH53515-3 CH53513-4	4096T96P03 (O) 4096T96P04 (O)	36-150 (RJ)	CH34549	304634-2
CRJ-200	CF34-3B1 (E)	CH31858-1, -2	4096T38P10 (O)	CH53515-3 CH53513-4	4096T96P03 (O) 4096T96P04 (O)	36-150 (RJ)	CH34549	304634-2
CRJ-700,900	CF34-8C1, 8C5 (E)	CH31926	4096T33P07	CH53515-1 CH53513-2	4096T96P07 (O) 4096T96P08 (O)	RE220	CH31930	WB3888446-1
CRJ-700,900	CF34-8C5A1/A3 (E)	CH31926	4096T33P07	CH53515-1 CH53513-5	4096T96P07 (O) 4096T96P011 (O)	RE220	CH31930	WB3888446-1
DASH 8-100,200,300 (ALT APU)	PW120 SERIES	CH34817	3055161-01	53335-01	3117291-01	APS 500 36-150	CH38013 CH34313	160544-1 3888002-2
DASH 8-400 (ALT APU) (ALT APU)	PW150A (E)	CH31918-2 CH31955-1	3122415-03 3056557-02	CH53456-2 CH53536-1	3122414-04 3056566-01	APS 1000 36-150 36-6	CH38013 CH34313 FHE159-6	160544-1 3888002-2 3888002-1
DHC-7	PT6A-50 (E)	CH34055	3035102	CH53399-05	3119835-01			
LEARJET 30	TFE731-20	CH31815-2	3074541-4					
LEARJET 31A	TFE731-2 (E)	CH31815-2	3074541-4	53142-10 53142-11	3071590-10 3071590-11			

* indicates that FAA-PMA is pending

**gasket included

(E) indicates exister available for application

(O) equivalent OEM P/N. PMA by test and computation.

(T3) Pin Style

(T5) Button Style



BOMBARDIER (CONTINUED)

AIRCRAFT TYPE	ENGINE MODEL	CHAMPION IGNITER P/N	OEM IGNITER P/N	CHAMPION LEAD P/N	OEM LEAD P/N	APU MODEL	CHAMPION IGNITER P/N	OEM APU IGNITER
LEAR 35/36	TFE731-2-100S (E)	CH31815-2	3074541-4	53142-10 53142-11 53142-12 53142-13	3071590-10 3071590-11 3071590-12 3071590-13			
LEARJET 40, 45XR	TFE731-20, AR/BR (E)	CH31815-2	3074541-4			RE100	CH34549	304634-2
LEARJET 55	TFE731-3D (E)	CH31815-2	3074541-4	53142-13	3071590-13			
LEARJET 60	PW305A	CH34682	31B5168-01			T62-T20G-10C3, 3A	CH38013	160544-1
GLOBAL EXPRESS	BR710A2-20	Y242-5	Y242-5			RE220	CH31930	WB3888446-1
GLOBAL 5000	BR710A2-20	Y242-5	Y242-5			RE220	CH31930	WB3888446-1

NOTES:

* indicates that FAA-PMA is pending **gasket included (E) indicates exicter available for application (O) equivalent OEM P/N, PMA by test and computation. (T3) Pin Style (T5) Button Style



BAE

AIRCRAFT TYPE	ENGINE MODEL	CHAMPION IGNITER P/N	OEM IGNITER P/N	CHAMPION LEAD P/N	OEM LEAD P/N	APU MODEL	CHAMPION IGNITER P/N	OEM APU IGNITER
146, AVRO/RJ70	ALF-502-R5 (E)	CH34452A	2-300-732-05			36-150	CH34313	3888002-2
AVRO RJ85, RJ100	LF507-1F	CH34452A	2-300-732-05			APS1000	CH38013	160544-1
ATP	PW125, 125A	CH34817	3055161-01	53367-01	3120676-01	36-150	CH34313	3888002-2
JETSTREAM 31	TPE331 (E)	CH31547C	369949-3	50221-24 50221-25	369876-24 369876-25			
JETSTREAM 41	TPE331-14GR/HR (E)	CH34627-1	3105893-6	53338-1	3105901-1 Y209-2	3105893-4	53339-1	3105902-1
HS 748-2A	DART 534-2	FHE19-6L	CR104-2					

NOTES:

* indicates that FAA-PMA is pending **gasket included (E) indicates exicter available for application (O) equivalent OEM P/N. PMA by test and computation. (T3) Pin Style (T5) Button Style



CESSNA

AIRCRAFT TYPE	ENGINE MODEL	CHAMPION IGNITER P/N	OEM IGNITER P/N	CHAMPION LEAD P/N	OEM LEAD P/N	APU MODEL	CHAMPION IGNITER P/N	OEM APU IGNITER
CARAVAN I,II	PT6A-114, 114A (E)	CH34055	3035102	CH53399-07	3119833-01			
CITATION I,II	JT15D-1A,-4 (E)	CH34659-3 (T5)	3119400-01	53300-1	3118347-01			
				53300-2	3118347-02			
CITATION II/S II	JT15D-4B (E)	CH34659-3 (T5)	3119400-01	53300-1	3118347-01			
				53300-2	3118347-02			
CITATION III, IV (ALT APU)	TFE731-3B-100S (E)	CH31815-2	3074541-4	53142-10	3071590-10	36-150	CH34549	3888002-2
				53142-11	3071590-11	T62-T40C7A	CH34834	4952382
				53142-12	3071590-12	T62-T40C3A/C3A, A1	CH34834	4952382
				53142-13	3071590-13			
CITATION ULTRA	JT15D-5D (E)	CH34659-3 (T5)	3119400-01	53300-1	3118347-01			
				53300-2	3118347-02			
CITATION V	JT15D-5A (E)	CH34659-3 (T5)	3119400-01	53300-1	3118347-01			
				53300-2	3118347-02			
CITATION VII	TFE731-4 (E)	CH31815-2	3074541-4	53164-11	3070873-11	36-150	CH34549	3888002-2
CITATION X	AE3007	CH31898-1	23062672	CH53557-1	23054367 (O)	36-150	CH34549	3888002-2
		CH31898-4 * (LONG LIFE)	23084762					
CITATION SOVEREIGN	PW306C, B	CH34682	31B5168-01			RE100	CH34549	304634-2
CJ1, CJ2, CJ3	FJ44-1A, 2C, 3 (E)	CH31956	68032	53221, 53279	50853, 50852			
CJ4	FJ44-4A (E)	CH31967	78214					
CONQUEST I (425)	PT6A-112 (E)	CH34055	3035102	CH53399-04	3119832-01			
CONQUEST 2 (441)	TPE331 (E)	CH31547C	369949-3					
P210 (TURBINE)	250-B17F/2	YB63-1	6877518					
EXCEL	PW545A	CH34804-3	31J1552-01 (O)			RE100	CH34549	304634-2
BRAVO	PW530A	CH34804-3	31J1552-01 (O)					
ENCORE	PW535A	CH34804-3	31J1552-01 (O)					
421	LTP101-700A-1A	CH34016-1	1-300-348-07					

NOTES:

* indicates that FAA-PMA is pending

**gasket included

(E) indicates exicter available for application

(O) equivalent OEM P/N. PMA by test and computation.

(T3) Pin Style

(T5) Button Style



DASSAULT

AIRCRAFT TYPE	ENGINE MODEL	CHAMPION IGNITER P/N	OEM IGNITER P/N	CHAMPION LEAD P/N	OEM LEAD P/N	APU MODEL	CHAMPION IGNITER P/N	OEM APU IGNITER
FALCON 10	TFE731-2 (E)	CH31815-2	3074541-4	53164-3				
FALCON 100	TFE731-2-100S (E)	CH31815-2	3074541-4	53164-3				
FALCON 20D, E, F (ALT APU)	CF700	FHE146-7A	37C311124			30-92C T62-T40C, C1, C9	CH31615 FHE159-6	369964-5 26519-1
FALCON 20-5 (RETROFIT)	TFE731-5A (E)	CH31815-2	3074541-4	53142-12	3071590-12	36-150 (W)	CH34313	3888002-2
FALCON 50, 50X (ALT APU)	TFE731-3, -40 (E)	CH31815-2	3074541-4	53142-10	3071590-10	36-100 T62-T40C3A, 3A1	CH34249 CH34492	3888096-1 3888096-2
FALCON 7X	PW307A (E)	CH31958-3	30P0606-03	CH53544-1	30P0605-02	GTCP36	CH34313	3888002-2
FALCON 200	ATF3-6, -6A	CH31641	3001430-1			T62-T40C3		
FALCON 900	TFE731-5A (E)	CH31815-2	3074541-4	53142-12	3071590-12	36-150	CH34313	3888002-2
FALCON 900B	TFE731-5 (E)	CH31815-2	3074541-4			36-150	CH34313	3888002-2
FALCON 900EX	TFE731-60 (E)	CH31815-2	3074541-4	53142-12	3071590-12	36-150	CH34313	3888002-2
FALCON 2000	CFE738-1	NA	NA			36-150 (F2M)	CH34549	304634-2
FALCON 2000EX	PW308C (E)	CH31929-5	30C1356-05	CH53483-7 CH53483-5	30C2172-04 30C1133-03	36-150 (F2M)	CH34549	304634-2

NOTES:

* indicates that FAA-PMA is pending **gasket included (E) indicates exister available for application (O) equivalent OEM P/N, PMA by test and computation. (T3) Pin Style (T5) Button Style



EMBRAER

AIRCRAFT TYPE	ENGINE MODEL	CHAMPION IGNITER P/N	OEM IGNITER P/N	CHAMPION LEAD P/N	OEM LEAD P/N	APU MODEL	CHAMPION IGNITER P/N	OEM APU IGNITER
CARAJA	PT6A-34 (E)	AGF2-6	3014054	53402-02	3011871			
EMB-110,111	PT6A-34 (E)	AGF2-6	3014054	53402-02	3011871			
EMB-120,121	PW115, 118, 120, 123	CH34817	3055161-01	53335-01 50383H 53367-01	3117291-01 3033339 3120676-01	36-150 (A), (AA)	CH34313	3888002-2
ERJ 135/140/145 (ALT APU)	AE3007	CH31898-1 CH31898-4 * (LONG LIFE)	23062672	CH53557-1 CH53557-2	23054367 (O) 23054368 (O)	APS 500 T62-T40C11 T62-T40C14	CH34834 FHE159-6 CH38013	4952382 26519-1 160544-1
ERJ 135 LEGACY	AE3007	CH31898-1 CH31898-4 * (LONG LIFE)	23062672	CH53557-1 CH53557-2	23054367 (O) 23054368 (O)	APS 500	CH34834	4952382
ERJ170, 175	CF34-8E, -8E5 (E)	CH31926	4096T33P07			APS 2300 (E)	CH34848 CH34856	4952647 4252846
ERJ190, 195	CF34-10E (E)	CH31900-6 CH31965 **	1374M13P11 (O) 1374M13P11 (O)			APS 2300 (E)	CH34848 CH34856	4952647 4252846

NOTES:

* indicates that FAA-PMA is pending **gasket included (E) indicates exicter available for application (O) equivalent OEM P/N. PMA by test and computation. (T3) Pin Style (T5) Button Style

CORPORATE & REGIONAL AIRCRAFT



FAIRCHILD DORNIER

AIRCRAFT TYPE	ENGINE MODEL	CHAMPION IGNITER P/N	OEM IGNITER P/N	CHAMPION LEAD P/N	OEM LEAD P/N	APU MODEL	CHAMPION IGNITER P/N	OEM APU IGNITER
MERLIN III, IIIA, IV, IVA	TPE331-10U-501G (E)	CH31547C	369949-3	50221-24	369876-24			
MERLIN IIB	TPE331-1-151G (E)	CH31547C	369949-3	50221-15	369876-15			
MERLIN IIIB	TPE331-10U-511G (E)	CH31547C	369949-3	50221-24	369876-24			
MERLIN IIIC	TPE331-10U-512G (E)	CH31547C	369949-3	50221-28	369876-28			
METRO I, II, III	TPE331-10U-513 (E)	CH31547C	369949-3	50221-25 50221-32	369876-25 369876-32			
METRO II, IIA, III	TPE331-10U-511G (E)	CH31547C	369949-3	50221-33	369876-33			
METRO II, IIA	TPE331-11U-612G (E)	CH31547C	369949-3	50221-33	369876-33			
328TP	PW119A	CH34817	3055161-01			36-150	CH34313	3888002-2
328 JET	PW306B	CH34682	31B5168-01			36-150	CH34313	3888002-2
DO228	TPE331-5 (E)	CH31547C	369949-3	50221-15	369876-15			
SEASTAR CD2	PT6A-135 (E)	CH34055	3035102	CH53399-04	3119832-01			

NOTES:

* indicates that FAA-PMA is pending **gasket included (E) indicates exicter available for application (O) equivalent OEM P/N. PMA by test and computation. (T3) Pin Style (T5) Button Style



FOKKER

AIRCRAFT TYPE	ENGINE MODEL	CHAMPION IGNITER P/N	OEM IGNITER P/N	CHAMPION LEAD P/N	OEM LEAD P/N	APU MODEL	CHAMPION IGNITER P/N	OEM APU IGNITER
F100	TAY 620-14, 15	Y183-5	L912019			36-150, 36-150 (RR)	CH34313 CH34549	3888002-2 304634-2
F100	TAY 650-15	Y183-6	L912023			36-150 (RR)	CH34549	304634-2
F27, F27-100	DART 514-7	FHE19-6L	CR104-2			30-54	CH31615 **	369964-5
F27, F27A, F27-200	DART 552-7	FHE19-6L	CR104-2			30-54	CH31615 **	369964-5
F27-100	DART 7	FHE19-6L	CR104-2			30-54	CH31615 **	369964-5
F27-400M	DART 536-7R	FHE19-6L	CR104-2			30-54	CH31615 **	369964-5
F27-200, 500, 500RF	DART 532-7, -7R	FHE19-6L	CR104-2			30-54	CH31615 **	369964-5
F27-600	DART 6	FHE19-6L	CR104-2			30-54	CH31615 **	369964-5
F27-FH227D	DART 532-7L	FHE19-6L	CR104-2			30-54	CH31615 **	369964-5
F27-FH22B, F	DART 532	FHE19-6L	CR104-2			30-54	CH31615 **	369964-5
F27J	DART 529	FHE19-6L	CR104-2			36-4A	CH31615 **	369964-5
F28 SERIES	SPEY 555-15/P/H	FHE164E	CR114-2			36-4A	CH31615 **	369964-5
F50	PW125B, 122B, 125B	CH34817	3055161-01			APS 1000	CH38013	160544-1
F70	TAY 620-15	Y183-5	L912019			36-150 (RR)	CH34549	304634-2

NOTES:

* indicates that FAA-PMA is pending **gasket included (E) indicates exicter available for application (O) equivalent OEM P/N. PMA by test and computation. (T3) Pin Style (T5) Button Style

CORPORATE & REGIONAL AIRCRAFT



GULFSTREAM

AIRCRAFT TYPE	ENGINE MODEL	CHAMPION IGNITER P/N	OEM IGNITER P/N	CHAMPION LEAD P/N	OEM LEAD P/N	APU MODEL	CHAMPION IGNITER P/N	OEM APU IGNITER
GI	DART 506	FHE19-6L	CR104-2			36-100	CH34313	3888002-2
GI	SPEY 511-8	FHE164E	CR114-2			36-100	CH34313	3888002-2
(ALT APU)						APS500 (T62-T40C2)	FHE159-6	26519-1
GIII	SPEY 511-8	FHE164E	CR114-2			36-100	CH34313	3888002-2
GIV/ GIV-SP	TAY 611-8	Y183-5	L912019			36-100	CH34249	3888096-1
GV, GV-SP	BR710	Y242-5	Y242-5			RE220	CH34730	WB3888401-1
		CH34760-1	CH34760-1 (LONG LIFE)					
G100	TFE731-3A (E)	CH31815-2	3074541-4	53142-10	3071590-10	RE100	CH34549	304634-2
			53142-11	3071590-11				
G150	TFE731-40AR-200G (E)	CH31815-2	3074541-4	53142-10	3071590-10	36-100	CH34249	3888096-1
			53142-11	3071590-11				
(ALT APU)						RE100	CH34549	304634-2
G200	PW306	CH34682	31B5168-01			GTCP 36	CH34249	3888096-1
G350	TAY 611-8C	Y183-5	L912019			GTCP 36	CH34249	3888096-1
G450	TAY 611-8C	Y183-5	L912019			GTCP 36	CH34249	3888096-1
G550	BR710	Y242-5	Y242-5			RE 220	CH34730	WB3888401-1
		CH34760-1	CH34760-1 (LONG LIFE)					

NOTES:



HAWKER BEECHCRAFT

AIRCRAFT TYPE	ENGINE MODEL	CHAMPION IGNITER P/N	OEM IGNITER P/N	CHAMPION LEAD P/N	OEM LEAD P/N	APU MODEL	CHAMPION IGNITER P/N	OEM APU IGNITER
BEECH 1900D	PT6A-67D (E)	CH34055	3035102	CH53399-09	3119832-02			
BEECH 1300/1900	PT6A-42 (E)	CH34055	3035102	CH53399-06	3119836-01			
BEECH 99	PT6A-20 (E)	CH34055	3035102	CH53399-04	3119832-01			
BEECH C12F	PT6A-42 (E)	CH34055	3035102	CH53399-06	3119836-01			
BEECH C99 AIRLINER	PT6A-36	CH34055	3035102	CH53399-06	3119836-01			
BEECH JET 400A	JT15D-5 (E)	CH34659-3 (T5)	3119400-01	53300-1 53300-2	3118347-01 3118347-02			
BEECH T-1A	JT15D-5B (E)	CH34659-3 (T5)	3119400-01	53300-1 53300-2	3118347-01 3118347-02			
JAYHAWK								
BEECH T-44A	PT6A-34B	CH34055	3035102	CH53399-04	3119832-01			
BEECH TCX	JT15D-5F (E)	CH34659-3 (T5)	3119400-01	53300-1 53300-2	3118347-01 3118347-02			
BONANZA (TURBOPROP)	250-B17F/2	YB63-1	1017565					
HAWKER 125-400, 600, 700	TFE731-3 (E)	CH31815-2	3074541-4	53142-10 53142-11 53142-12 53142-13	3071590-10 3071590-11 3071590-12 3071590-13	30-92	CH31615 **	369964-5
(ALT APU)						36-150	CH34313	3888002-2
HAWKER 750,800, 800XP	TFE731-5R-1H (E)	CH31815-2	3074541-4	53142-10 53142-11	3071590-10 3071590-11	GTCP36, T62-T40C, 40C8D	CH34313	3888002-2
(ALT APU)						APS 500	CH38013	160544-1
HAWKER 1000	PW305B	CH34682	31B5168-01			GTCP36, T62-T40C9	CH34313	3888002-2
HAWKER HORIZON/4000	PW308A (E)	CH31929-4	30C1356-04	CH53483-7	30C2172-04	GTCP36	CH34313	3888002-2
KING AIR A100	PT6A-28 (E)	CH34055	3035102	CH53399-04	3119832-01			
KING AIR B100	TPE331-6 (E)	CH31547C	369949-3	50221-12	369876-12			
KING AIR B200	PT6A-42 (E)	CH34055	3035102	CH53399-06	3119836-01			
KING AIR C90	PT6A-21 (E)	CH34055	3035102	CH53399-04	3119832-01			
KING AIR E90	PT6A-28 (E)	CH34055	3035102	CH53399-04	3119832-01			
PREMIER I	FJ44-2A (E)	CH31956	68032	53221, 53279	50853, 50852			
SUPER KING AIR 350	PT6A-60A (E)	CH34055	3035102	CH53399-06	3119836-01			
SUPER KING AIR B200	PT6A-42 (E)	CH34055	3035102	CH53399-06	3119836-01			

* indicates that FAA-PMA is pending

**gasket included

(E) indicates exicter available for application

(O) equivalent OEM P/N. PMA by test and computation.

(T3) Pin Style

(T5) Button Style



VARIOUS AIRCRAFT MODELS

AIRCRAFT TYPE	ENGINE MODEL	CHAMPION IGNITER P/N	OEM IGNITER P/N	CHAMPION LEAD P/N	OEM LEAD P/N	APU MODEL	CHAMPION IGNITER P/N	OEM APU IGNITER
ADAM AIRCRAFT A700	FJ33 (E)	CH34812-2	67906					
AEROSPATIALE CORVETTE	JT15D-4 (E)	CH34659-3 (T5)	3119400-01	53300-1 53300-2	3118347-01 3118347-02			
AIR TRACTOR 402A, 502B, 602, 802	PT6A-11AG, -15AG (E) 65AG, 67AG	CH34055	3035102	CH53399-04	3119832-01			
ANTONOV-38	TPE331-14GR (E)	CH34627-1	315893-6	53338-1	3105901-1			
ANTONOV-38-100	TPE331-14 (E)	CH31701A	3105547-1	53133-5	3105589-5			
ASTRA 1125	TFE731-3A (E)	CH31815-2	3074541-4	53164-4	3070873-4			
ASTRA SPX	TFE731-40 (E)	CH31815-2	3074541-4	53142-10	3071590-10			
ATR42	PW120	CH34817	3055161-01	53335-01	3117291-01	36-150	CH34313	3888002-2
ATR72	PW124B, 122F	CH34817	3055161-01	53335-01	3117291-01	36-150	CH34313	3888002-2
AVIANTI P180	PT6A-66 (E)	CH34055	3035102	CH53399-07	3119833-01			
BN-2T	250-B17C	CH34269	23006266					
SPECIAL MISSION								
BN-2T	250-B17F	YB63-1	1017565					
SPECIAL MISSION								
BERNDT IVERSEN II	PT6A-34 (E)	CH34055	3035102	CH53399-04	3119832-01			
CASA 101EB	TFE731-2 (E)	CH31815-2	3074541-4	53142-11	3071590-11			
CASA-212	TPE331-5 (E)	CH31547C	369949-3	50221-12	369876-12			
CASA-212P	PT6A-65B (E)	CH34055	3035102	CH53399-06	3119836-01			
CN235-100,100M	CT7-7A,-7A1	CH34419	5044T67P07					
CN235-100, 200	CT7-9B,-9C	CH34419	5044T67P07					
CN235-300, 330	CT7-9C3	CH34419	5044T67P07					
CONVAIR 580	501-D13	FS189-1D	6805734			85-90,85-921	CH31723 CH31824	369162 3888210-1
CONVAIR 600	DART 542-4	FHE19-6L	CR104-2			30-141 (E)	CH31615 **	369964-5
CONVAIR 640	DART 10-1	FHE19-6L	CR104-2			30-141 (E)	CH31615 **	369964-5
DASA FAN RANGER	JT15D (E)	CH34659-3 (T5)	3119400-01	53300-1 53300-2	3118347-01 3118347-02			
DC3 (TURBINE)	PT6A-65R (E)	CH34055	3035102	CH53399-06	3119836-01			

* indicates that FAA-PMA is pending

**gasket included

(E) indicates exciter available for application

(O) equivalent OEM P/N. PMA by test and computation.

(T3) Pin Style

(T5) Button Style



VARIOUS AIRCRAFT MODELS (CONTINUED)

AIRCRAFT TYPE	ENGINE MODEL	CHAMPION IGNITER P/N	OEM IGNITER P/N	CHAMPION LEAD P/N	OEM LEAD P/N	APU MODEL	CHAMPION IGNITER P/N	OEM APU IGNITER
DIAMOND IA	JT15D-4D (E)	CH34659-3 (T5)	3119400-01	53300-1 53300-2	3118347-01 3118347-02			
EXTRA 500	250-B17F/2	YB63-1	1017565					
FUJI T-5/T-7/KN-D2	225-B17D	YB63-1	1017565					
GROB 140	250-B17F/2	YB63-1	1017565					
GUMMAN/SCHWEIZER G164D AGCAT	PT6A-41AG (E)	CH34055	3035102					
HERMAN TRAITOR 250	250-B17F	YB63-1	1017565					
JAFFE-SWEARINGEN SA-32T	225-B17D	YB63-1	1017565					
JAVELIN	FJ33 (E)	CH34812-2	67906					
JETPROP DLX	PT6A-34 (E)	CH34055	3035102	CH53399-04	3119832-01			
L-139	TFE731-5 (E)	CH31815-2	3074541-4					
L188 ELECTRA	501-D22	FS89-1D	6805734			85	FS47-11	75153
LOCKHEED JETSTAR (ALT APU)	TFE731-3 (E)	CH31815-2	3074541-4	53164-3		30-100 (E) T62T-39/40C	CH31615 ** FHE159-6	369964-5 26519-1
MALLARD	PT6A-34 (E)	CH34055	3035102	CH53399-04	3119832-01			
MAULE 7, M17, MX7, MXT7-420	250-B17C	YB63-1	1017565					
PACIFICAERO CRESCO 750	PT6A-34AG (E)	CH34055	3035102	CH53399-04	3119832-01			
PAMPA 200	TFE731-2B (E)	CH31815-2	3074541-4					
PEGASUS UCAV-N	JT15D-5C (E)	CH34659-3 (T5)	3119400-01	53300-1 53300-2	3118347-01 3118347-02			
PILATUS PC-12	PT6A-67B, -67P (E)	CH34055	3035102	CH53399-06	3119836-01			
PILATUS PC-6	PT6A-27 (E)	CH34055	3035102	CH53399-04	3119832-01			
PILATUS PC-7	PT6A-25A (E)	CH34055	3035102	CH53399-07	3119833-01			
PIPER CHEYENNE 400LS	TPE331-14A (E)	CH31701A	3105547-1	53133-5	3105589-5			
PIPER CHEYENNE IA	PT6A-11 (E)	CH34055	3035102	CH53399-04	3119832-01			
PIPER CHEYENNE IIIA	PT6A-61 (E)	CH34055	3035102	CH53399-06	3119836-01			
PIPER MALIBU MERIDIAN	PT6A-42 (E)	CH34055	3035102	CH53399-06	3119836-01			
ROCKWELL 40/60	JT12A-8	FHE151C	424815					
SAAB 2000	AE2100A	CH31898-4	23084762			APS 1000	CH38013	160544-1
SABERLINER	TFE731-3R-1D (E)	CH31815-2	3074541-4					

* indicates that FAA-PMA is pending

**gasket included

(E) indicates exicter available for application

(O) equivalent OEM P/N. PMA by test and computation.

(T3) Pin Style

(T5) Button Style



VARIOUS AIRCRAFT MODELS (CONTINUED)

AIRCRAFT TYPE	ENGINE MODEL	CHAMPION IGNITER P/N	OEM IGNITER P/N	CHAMPION LEAD P/N	OEM LEAD P/N	APU MODEL	CHAMPION IGNITER P/N	OEM APU IGNITER
SF340A/B	CT7-5A/9B	CH34419	5044T67P07			36-150	CH34313	3888002-2
SHORTS 330	PT6A-45A (E)	CH34055	3035102	CH53399-06	3119836-01			
SHORTS 360	PT6A-65AR (E)	CH34055	3035102	CH53399-06	3119836-01			
SHORTS C-23A SHERPA	PT6A-45R (E)	CH34055	3035102	CH53399-06	3119836-01			
SIAI-MARCHETTI S.211	JT15D-41	CH34659-3 (T5)	3119400-01	53300-1 53300-2	3118347-01 3118347-02			
SIAI-MARCHETTI SF 260TP	250-B17F	YB63-1	1017565					
SIAI-MARCHETTI SF 600A	250-B17F	YB63-1	1017565					
SIGMAJET, MAGANAJET	FJ44-1A (E)	CH31956	68032	53221, 53279	50853, 50852			
SINO-SWEARINGEN SJ30	FJ44-2A (E)	CH31956	68032	53221, 53279	50853, 50852			
SOCATA TBM700	PT6A-64 (E)	CH34055	3035102	CH53399-06	3119836-01			
TURBOCOMMANDER (FLEETWOOD)	TPE 331-5-251K (E)	CH31547C	369949-3					
VALMET L-90TP	250-B17F	YB63-1	1017565					

NOTES:

* indicates that FAA-PMA is pending **gasket included (E) indicates exicter available for application (O) equivalent OEM P/N. PMA by test and computation. (T3) Pin Style (T5) Button Style



AGUSTA, AGUSTA-BELL

HELICOPTER TYPE	ENGINE MODEL	CHAMPION IGNITER P/N	OEM IGNITER P/N	CHAMPION LEAD P/N	OEM LEAD P/N	CHAMPION EXCITER	CHAMPION IGNITER P/N	OEM EXCITER
AGUSTA 190A	250-C20B	YB63-1	1017565					
AGUSTA 109C	250-C20R/1	YB63-1	1017565					
AGUSTA A109	ARRIUS 2K1	CH34745 *	9550175400					
AGUSTA A109 LUH	ARRIUS 2K2	CH34745 *	9550175400					
AGUSTA A109 POWER	PW206C (E)	CH34723	3120880-01	CH53442-4	312144-02	CH92015	3043937-03	
AGUSTA A109E	PW206B (E)	CH34723	3120880-01	CH53442-3	3122957-01	CH92015	3043937-03	
AGUSTA A109E	PW206C, E (E)	CH34723	3120880-01	CH53442-4	3121144-02	CH92015	3043937-03	
AGUSTA A109KK2	ARRIEL 1K1	CH34745	9550175400					
AGUSTA EOA	250-C20R/1	YB63-1	1017565					
AGUSTA MK II+	250-C20R/1	YB63-1	1017565					
AGUSTA A119 KOALA	PT6B-37A (E)	CH34055	3035102	CH53399-01	3119829-01			
AGUSTA-BELL 212	PT6T-3 (E)	CH34055	3035102	CH53399-01	3119829-01			
AGUSTA-BELL 412	PT6T-3B (E)	CH34055	3035102	CH53399-01	3119829-01			
AGUSTA-BELL 412/SP/HP/EP	PT6T-3DE (E)	CH34055	3035102	CH53399-01	3119829-01			
AGUSTA-BELL AB139	PT6C-67C (E)	CH34758-2	3050627-03	CH53490	3050604-01	CH92015-1	3043937-04	

NOTES:

* indicates that FAA-PMA is pending

**gasket included

(E) indicates exciter available for application

(O) equivalent OEM P/N. PMA by test and computation.

(T3) Pin Style

(T5) Button Style



BELL

HELICOPTER TYPE	ENGINE MODEL	CHAMPION IGNITER P/N	OEM IGNITER P/N	CHAMPION LEAD P/N	OEM LEAD P/N	CHAMPION EXCITER	CHAMPION IGNITER P/N	OEM EXCITER
BELL 222	LTS101-650C-3, -3A	CH34016-1	1-300-348-07					
BELL 230	250-C30G/2	CH34187A	6899084					
BELL 407	250-C47B	CH34187A	6899084					
BELL 412	PT6T-3D (E)	CH34055	3035102	CH53399-01	3119829-01			
BELL 427	PW206E	CH34723	3120880-01	CH53530	3056743-01	CH92015	3043937-03	
BELL 206L III, IV	250-C30P	CH34187A	6899084					
		CH34304 (LONG LIFE)	23006267					
BELL 206L-1	250-C20B	YB63-1	1017565					
BELL 206B-3	250-C20J	YB63-1	1017565					
BELL 214ST	CT7-2A	CH34158	4053T22P01					
BELL 430 CORPORATE	250-C40B	CH34187A	6899084					
		CH34304 (LONG LIFE)	23006267					
BELL OH-58D	250-C30R	CH34187A	6899084					
		CH34304 (LONG LIFE)	23006267					
BELL UH-1H (HUEY)	PT6C-67D (E)	CH34758-2	3050627-03	CH53490	3050604-01			

NOTES:

* indicates that FAA-PMA is pending **gasket included (E) indicates exciter available for application (O) equivalent OEM P/N. PMA by test and computation. (T3) Pin Style (T5) Button Style

HELICOPTER



EUROCOPTER

HELICOPTER TYPE	ENGINE MODEL	CHAMPION IGNITER P/N	OEM IGNITER P/N	CHAMPION LEAD P/N	OEM LEAD P/N	CHAMPION EXCITER	CHAMPION IGNITER P/N	OEM EXCITER
AS350, AS350D	LTS101-600A-3, -3A	CH34016-1	1-300-348-06					
AS350B1, 350B2 ASTAR	ARRIEL 1D1	CH34745	9550175400	53317-3	9550166530			
AS350B3	ARRIEL 2B1	CH34595	9550168770					
AS350BA	ARRIEL 1B	CH34745	9550175400	53317-3	9550166530			
AS350D	LTS-101-600A3	CH34016-1						
AS350G	250-C30M	CH34187A	6899084					
		CH34304 (LONG LIFE)	23006267					
AS355	250-C20F	YB63-1	1017565					
AS365N3	ARRIEL 2C	CH34595	9550168770					
BK117C1	ARRIEL 1E2	CH34745	9550175400					
BO 108	PW206B (E)	CH34723	3120880-01	CH53442-3 CH53442-4	3121144-02 3121144-03	CH92015	3043937-03	
BO-105	250-C20B	YB63-1	1017565					
EC 130	ARRIEL 2B1	CH34595	9550168770					
EC 135 P2	PW206B2 (E)	CH34723	3120880-01	CH53442-3 *	3122957-01	CH92015	3043937-03	
EC 135	PW206E (E)	CH34723	3120880-01	CH53442-4	3121144-02	CH92015	3043937-03	
EC 635	PW206B2 (E)	CH34723	3120880-01	CH53442-3 *	3122957-01	CH92015	3043937-03	
EC120, 120B COLIBRI	ARRIUS 2F	CH34593	9550166660					
EC135	ARRIUS 2B1/2B1A-1	CH34593	9550168770					
EC135	PW206B (E)	CH34723	3120880-01	CH53442-3	3122957-01	CH92015	3043937-03	
EC 145	ARRIEL 1E2	CH34745	9550175400					
EC155	ARRIEL 2C2	CH34745 *	9550175400					
EC155B	ARRIEL 2C1	CH34745 *	9550175400					
EC635	PW206B (E)	CH34723	3120880-01	CH53442-3	3122957-01	CH92015	3043937-03	
HH-65A SRR	LTP101-750B-2	CH34016-1	1-300-348-07					

* indicates that FAA-PMA is pending

**gasket included

(E) indicates exciter available for application

(O) equivalent OEM P/N. PMA by test and computation.

(T3) Pin Style

(T5) Button Style



VARIOUS HELICOPTER MODELS

HELICOPTER TYPE	ENGINE MODEL	CHAMPION IGNITER P/N	OEM IGNITER P/N	CHAMPION LEAD P/N	OEM LEAD P/N	CHAMPION EXCITER	CHAMPION IGNITER P/N	OEM EXCITER
KHI BK-117A	LTS101-650B-1	CH34016	1-300-348-06					
KHI BK-117B	LTP101-750B-1	CH34016-1	1-300-348-07					
BK-117B-1	LTS-101-750B1	CH34016-1	1-300-348-07					
SCHWEIZER 330	RR 250-C20W	YB63-1	1017565					
SCHWEIZER 333	RR 250-C20W	YB63-1	1017565					
SIKORSKY H-76	PT6B-36 (E)	CH34055	3035102	CH53463	3123061-01			
SIKORSKY S-58T	PT6T-6 (E)	CH34055	3035102					
SIKORSKY S-76 MARK II	250-C30S	CH34187A	6899084					
SIKORSKY S-76A+, S-76C	ARRIEL 1S1	CH34745	9550175400	53317-3	9550166530			
SIKORSKY S-76B	PT6B-36 (E)	CH34055	3035102	CH53463	3123061-01			
SIKORSKY S-76C+	ARRIEL 2S1	CH34745*	9550175400					
SIKORSKY S-92	CT7-8A	CH34419*	5044T67P07					
EH INDUSTRIES EH 101	CT7-6A	CH34419	5044T67P07					
MD 902 EXPLORER	PW206E (E)	CH34723	3120880-01	CH53530	3056743-01	CH92015	3043937-03	
MD 500E	RR 250-C20R+	CH34168	6877518					
		CH34269 (LONG LIFE)	23006266					
MD 520N	RR 250-C20R+	CH34168	6877518					
		CH34269 (LONG LIFE)	23006266					
MD 600N	RR 250-C47M	CH34187A	6899084					
		CH34304 (LONG LIFE)	23006267					
ENSTROM 480B	RR250-C20W	CH34168	6877518					
		CH34269 (LONG LIFE)	23006266					
PZL SWIDNIK PZL SW-4	All 250-C2R/2	YB63-1	1017565					

* indicates that FAA-PMA is pending

**gasket included

(E) indicates exciter available for application

(O) equivalent OEM P/N. PMA by test and computation.

(T3) Pin Style

(T5) Button Style



NOTES:

Handwriting lines for notes, consisting of 21 horizontal lines.

IGNITERS

IGNITERS

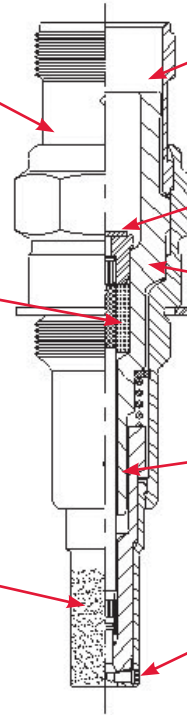
IGNITION SYSTEM RECOMMENDATIONS

1. Do not use anti-seize material on silver plated threads.
2. Some igniters have graphite grease to help igniters first spark. Do not remove the grease before installation.
3. Do not bend or twist the leads. This will damage the leads and connectors over time.

Corrosion Protection
Silver-plated shell for protection against corrosion and seizing.

Leakage Protection
Dual seals for protection against gas leakage under high temperature conditions.

Protective Coating
Special coating prevents excessive chafing of shell, extending igniter service life.



Coated Bushing
Bushing coated to prevent lead sticking, allowing for easier removal and installation.

Tungsten Contact
Provides increased resistance to arcing with mating lead.

Positive Insulator Retention
Upper insulator shaped to provide positive component retention.

Shaped Insulator
Lower insulator shaped to provide positive component retention.

Patented Iridium Pin Design
Provides maximum resistance to spark erosion and increased service life.



IGNITERS

ENGINE MANUFACTURER	ENGINE MODEL	CHAMPION IGNITER P/N	OEM IGNITER P/N	ALT CHAMPION IGNITER P/N	ALT OEM IGNITER P/N
CFM INTERNATIONAL	CFM56-3 SERIES	CH31900-6 **	1374M13P11	CH31965 **	1374M13P11 (O)
CFM INTERNATIONAL	CFM56-5 (DAC)	CH31900-6 **	1374M13P11	CH31965 **	1374M13P11 (O)
CFM INTERNATIONAL	CFM56-5A & 5B SERIES	CH31900-6 **	1374M13P11	CH31965 **	1374M13P11 (O)
CFM INTERNATIONAL	CFM56-5C SERIES	CH31900-6 **	1374M13P11	CH31965 **	1374M13P11 (O)
CFM INTERNATIONAL	CFM56-7 SERIES (DAC)	CH31900-6 **	1374M13P11	CH31965 **	1374M13P11 (O)
CFM INTERNATIONAL	CFM56-7 SERIES (SAC)	CH31900-6 **	1374M13P11	CH31965 **	1374M13P11 (O)
GENERAL ELECTRIC	CF34-10E	CH31900-6 **	1374M13P11 (O)	CH31965 **	1374M13P11 (O)
GENERAL ELECTRIC	CF34-1A	FHE256-10A	4048T30P06		
GENERAL ELECTRIC	CF34-3A	CH34661	4048T30P10	FHE256-10B	4048T30P07
GENERAL ELECTRIC	CF34-3A1, -3B, -3B1	CH31858-2	4096T38P10 (O)	CH31858-1	4096T38P10 (O)
GENERAL ELECTRIC	CF34-8 SERIES	CH31926	4096T33P07		
GENERAL ELECTRIC	CF6-45 & 50 SERIES	CH31905	1305M52P09	CH31843 (T3)	9101M37P71
GENERAL ELECTRIC	CF6-80C SERIES	CH31904-2 **	9387M23P09	CH31772A **	9387M23P01
GENERAL ELECTRIC	CF6-80E SERIES	CH31904-2 **	9387M23P09	CH31772A **	9387M23P01
GENERAL ELECTRIC	CF700	FHE146-7A	37C311124P101		
GENERAL ELECTRIC	CJ610	FHE146-7A	37C311124P101		
GENERAL ELECTRIC	CT58 SERIES	CH34095	37B200275P102		
GENERAL ELECTRIC	CT7 SERIES	CH34419	5044T67P07	CH34158	4053T22P01
GENERAL ELECTRIC	GE90 SERIES	CH31919 *	N/A		
HONEYWELL	ALF502 SERIES	CH34452A	2-300-732-05		
HONEYWELL	LF507 SERIES	CH34452A	2-300-732-05		
HONEYWELL	ATF3-6, 6A (LOWER POSITION) BOTH IGNITERS REQUIRED	CH31767	3003119-1		
HONEYWELL	ATF3-6, 6A (UPPER POSITION)	CH31768	3003119-2		
HONEYWELL	HTF7000, HTF7500	CH34864	3038116-2		
HONEYWELL	LTP101 SERIES	CH34016-1	1-300-348-07		
HONEYWELL	T53 SERIES	CH34016	1-300-348-06	FHE113-10	1-300-197-03
HONEYWELL	T53-13A-13B	FHE211-2	1-300-348-03		
HONEYWELL	TFE731 SERIES	CH31815-2	3074541-4	CH31621A	3070967-1
HONEYWELL	TPE331 SERIES	CH31547C	369949-3		
HONEYWELL	TPE331-14A, -14B	CH31701A	3105547-1		

* indicates that FAA-PMA is pending

**gasket included

(E) indicates exciter available for application

(O) equivalent OEM P/N. PMA by test and computation.

(T3) Pin Style

(T5) Button Style



IGNITERS

ENGINE MANUFACTURER	ENGINE MODEL	CHAMPION IGNITER P/N	OEM IGNITER P/N	ALT CHAMPION IGNITER P/N	ALT OEM IGNITER P/N
HONEYWELL	TPE331-14GR-HR	CH34627-1	3105893-6	Y209-2	3015893-4
INTERNATIONAL AERO	V2500 SERIES	CH31964	JS100A		
PRATT & WHITNEY	J60-P-5B	AA33SD	424848	FHE151C	424815
PRATT & WHITNEY	JT12A SERIES	FHE151C	424815		
PRATT & WHITNEY	JT8D SERIES	AA72SA	487238	AA134S-1	709525
PRATT & WHITNEY	JT9D SERIES	AA134S-1	709525		
PRATT & WHITNEY	JTF2A-6A	FHE151C	424815		
PRATT & WHITNEY	PW2000	AA134S-1	709525		
PRATT & WHITNEY	PW4000	AA134S-1	709525		
PRATT & WHITNEY	PW4077, PW4077D, PW4084, PW4090, PW4098	CH31923-5	51J015		
PRATT & WHITNEY CANADA	JT15D SERIES	CH34659-3 (T5) (LONG LIFE)	3119400-01	FHE246-4 (T3) CH34668-1 (T5)	3039828 3117463-01
PRATT & WHITNEY CANADA	PT6A-6, -6A, 6B, -11, -11AG-20, -15AG, -20A, -20B, -21, -25, -25A, -27, -28, -28A, -29, -34, -34B, -36, -110	AGF2-6 (LOW-VOLTAGE GLOW PLUG COIL ELEMENT)	3014054		
PRATT & WHITNEY CANADA	PT6A SERIES, B SERIES, T SERIES	CH34055	3035102	CH34406	3035882
PRATT & WHITNEY CANADA	PT6C-67D, 67C	CH34758-3	3050627-04		
PRATT & WHITNEY CANADA	PT6T SERIES	CH34055	3035102	CH34406	3035882
PRATT & WHITNEY CANADA	PW100 SERIES	CH34817	3055161-01	CH34406	3035882
PRATT & WHITNEY CANADA	PW115, PW118, PW119, PW120, PW121, PW123, PW124, PW125, PW126, PW127	CH34055	3035102	CH34406	3035882
PRATT & WHITNEY CANADA	PW150A	CH31918-2	3122415-03	CH31955-1	3056557-01
PRATT & WHITNEY CANADA	PW206A, B, B2, C, E	CH34723	3120880-01	CH34643-1	3120953-01
PRATT & WHITNEY CANADA	PW207C, D, D1, D2, E	CH34723	3120880-01		
PRATT & WHITNEY CANADA	PW305-A, -B	CH34682	31B5168-01		



IGNITERS

ENGINE MANUFACTURER	ENGINE MODEL	CHAMPION IGNITER P/N	OEM IGNITER P/N	ALT CHAMPION IGNITER P/N	ALT OEM IGNITER P/N
PRATT & WHITNEY CANADA	PW306A, B, C	CH34682	31B5168-01		
PRATT & WHITNEY CANADA	PW307A	CH31958-3	30P0606-03		
PRATT & WHITNEY CANADA	PW308A, PW308C	CH31929-5	30C1356-05	CH31929-4	30C1356-04
PRATT & WHITNEY CANADA	PW530, PW535, PW545	CH34804-3	31J1552-01 (O)		
PRATT & WHITNEY CANADA	ST6L-73, ST6L-77	CH34055	3035102		
ROLLS ROYCE	AVON 200 & 500 SERIES	FHE176A	CR103		
ROLLS ROYCE	BR710 SERIES	Y242-5	Y242-5		
ROLLS ROYCE	BR715 SERIES	CH34760-1	CH34760-1	Y242-5	Y242-5
ROLLS ROYCE	DART 500 SERIES	FHE19-6L	CR104-2		
ROLLS ROYCE	MK.501	CH34126	CBS113-2		
ROLLS ROYCE	RB211 SERIES	YA211-25	L912018		
ROLLS ROYCE	RB211-524G2-T-19, G3-T-19, H2-T-19, H-T-36	CH34736	L907030		
ROLLS ROYCE	RB211-535C-37, E4-37, E4-B-37 "PHASE 5"	CH34743	L907031		
ROLLS ROYCE	SPEY 500 SERIES	FHE164E	CR114-2	YW90	L912017
ROLLS ROYCE	TAY 611-8, 620-15, 650-14, -15	Y183-5	L912019		
ROLLS ROYCE	TAY 650-14, -15, 651-54	Y183-6	L912023		
ROLLS ROYCE	TRENT 500 SERIES	CH34761	L907032		
ROLLS ROYCE	TRENT 768-60, 772-60, 772B-60, 875-17, 877-17, 884-17, 892-17, 892B-17, 895-17	CH34736	L907030		
ROLLS ROYCE	TRENT 900 SERIES	CH34829	CH34829		
ROLLS ROYCE	VIPER MK.500 SERIES	FHE205B	CBS116		
ROLLS ROYCE	VIPER MK.601-22	FHE267-2A	CBS111-2		
ROLLS-ROYCE ALLISON	225-B17C	CH34269	23006266		
ROLLS-ROYCE ALLISON	225-B17D	CH34269	23006266	YB63-1	6877518
ROLLS-ROYCE ALLISON	225-C10, C10A	CH34269	23006266	YB63-1	6877518
ROLLS-ROYCE ALLISON	225-C10, C10A	CH34168	6877518	CH34269	23006266

* indicates that FAA-PMA is pending

**gasket included

(E) indicates exciter available for application

(O) equivalent OEM P/N. PMA by test and computation.

(T3) Pin Style

(T5) Button Style



IGNITERS

ENGINE MANUFACTURER	ENGINE MODEL	CHAMPION IGNITER P/N	OEM IGNITER P/N	ALT CHAMPION IGNITER P/N	ALT OEM IGNITER P/N
ROLLS-ROYCE ALLISON	250-B15A, B15E, B15G, B17D, B17E, B17F, B17F/1, B17F/2, C18, C18C, C20J, C20R, C20R/1, C20R/2, C20R/4, C20S, C20W	YB63-1	1017565		
ROLLS-ROYCE ALLISON	250-C10B, C18D, 218, C18A, C18B, C19, C20, C20B, C20C, C20F, B17, B17B, B17C	YB63-1	1017565		
ROLLS-ROYCE ALLISON	250-C10, C18, B15, B15A, B15E, B15G, B17 SERIES, C20 SERIES	CH34168	6877518		
ROLLS-ROYCE ALLISON	250-C10B, C10D, C18, C18A, C18B, C19, C20, C20B, C20C, C20F, C20J, C20R, C20R/1, C20R/2, C20R/4, C20S, C20W	CH34168	6877518		
ROLLS-ROYCE ALLISON	250-B15A, B15E, B15G, B17, B17B, B17C, B17D, B17E, B17F, B17F/1, C10, C10B, C10D, C18, C18A, C18B, C18C, C19, C20, C20B, C20C, C20F, C20J, C20S, C20R, C20R/1, C20R/2, C20R/4, C20W	CH34269	23006266		
ROLLS-ROYCE ALLISON	250-C30R/3M	CH34187A	6899084		
ROLLS-ROYCE ALLISON	250-C30/G, C20/G2, 30/R1, C30/R3, C30/R3M, C30U, C40B, C47B, C47M	CH34304	23006267		
ROLLS-ROYCE ALLISON	501-D13, -13A, -D13D, -D13E, -D13H, -D22	FS89-1D	6805734		
ROLLS-ROYCE ALLISON	501-D22A, C, G	FS109-1A	6847727		
ROLLS-ROYCE ALLISON	AE2100A, C, D3	CH31898-1	23062672		
ROLLS-ROYCE ALLISON	AE3007	CH31898-4 * (LONG LIFE)	23084762		
		CH31898-4	23062672		
		CH31898-4 * (LONG LIFE)			
TURBOMECA	ARRIEL 1A, -1A1, -1A2, -1B, -1C, -1C1, -1C2, -1D, -1D1, -1E2, -1K, -1K1, -1S, -1S1	CH34745	9550175400		

* indicates that FAA-PMA is pending

**gasket included

(E) indicates exciter available for application

(O) equivalent OEM P/N. PMA by test and computation.

(T3) Pin Style

(T5) Button Style



IGNITERS

ENGINE MANUFACTURER	ENGINE MODEL	CHAMPION IGNITER P/N	OEM IGNITER P/N	ALT CHAMPION IGNITER P/N	ALT OEM IGNITER P/N
TURBOMECA	ARRIEL 1A, -1A1, -1A2, -1B, -1D, -1D1, -1S, -1S1, -2B, -2C	CH34595	9550168770		
TURBOMECA	ARRIUS 2F, -2B1, -2B2	CH34593	9550166660		
WALTER	M601E-11	CH34630	CH34630		
WALTER	M601F	CH34630	CH34630		
WILLIAMS INTERNATIONAL	FJ33	CH34812-2	67906		
WILLIAMS INTERNATIONAL	FJ44-1A, -1AP, 2A, -2C, -3A, -3A-24	CH31956	68032		
WILLIAMS INTERNATIONAL	FJ44-4A	CH31967	78214		

NOTES:

* indicates that FAA-PMA is pending **gasket included (E) indicates exciter available for application (O) equivalent OEM P/N. PMA by test and computation. (T3) Pin Style (T5) Button Style

IGNITERS



APU IGNITERS

ENGINE MANUFACTURER	ENGINE MODEL	CHAMPION IGNITER P/N	OEM IGNITER P/N	ALT CHAMPION IGNITER P/N	ALT OEM IGNITER P/N
HAMILTON SUNDSTRAND APIC	APS 500R (T62T-40C14)	CH34834	4952382	CH38013	160544-1
HAMILTON SUNDSTRAND APIC	APS 1000, (T-62T-46C)	CH38013	160544-1		
HAMILTON SUNDSTRAND APIC	APS 2000	CH38013	160544-1		
HAMILTON SUNDSTRAND APIC	APS 2100	CH38013	160544-1		
HAMILTON SUNDSTRAND APIC	APS 2300	CH34856 CH34865*	4952846 TBD	CH34848	4952647
HAMILTON SUNDSTRAND APIC	APS 3200	CH38013	160544-1		
HAMILTON SUNDSTRAND APIC	T62T-40C14 (APS 500 R/C14)	CH34834	4952382		
HAMILTON SUNDSTRAND APIC	T20G GEMINI	CH38013	160544-1		
HAMILTON SUNDSTRAND APIC	T62-T39, 40C11	FHE159-6	26519-1		
HONEYWELL	TSCP700	FS153-1 **	369964-4		
HONEYWELL	RE100	CH34549	304634-2		
HONEYWELL	RE220 (GX) & (RJ)	CH31930	WB3888446-1		
HONEYWELL	RE220 (GV)	CH34730	WB3888401-1		
HONEYWELL	GTP30-54, 30-95, 30-141	CH31615	369964-5		
HONEYWELL	GTCP30-92	CH31615	369964-5		
HONEYWELL	GTCP85-99	CH31723	369162		
HONEYWELL	GTCP85-98DHF	CH31723	369162		
HONEYWELL	GTCP85-98DCK	CH31723	369162		
HONEYWELL	GTCP85-98D	CH31723	369162		
HONEYWELL	GTCP85-98CK	CH31723	369162	CH31824	3888210-1
HONEYWELL	GTCP85-98C	CH31723	369162	CH31824	3888210-1
HONEYWELL	GTCP85-98	CH31723	369162		
HONEYWELL	GTCP85-91C	CH31723	369162	CH31824	3888210-1
HONEYWELL	GTCP85-90F	FS47-11	75153		
HONEYWELL	GTCP85-90E/F	FS47-11	75153		
HONEYWELL	GTCP85-90	FS47-11	75153		
HONEYWELL	GTCP85-37	FS47-11	75153		
HONEYWELL	GTCP85-291C	FS47-11	75153		
HONEYWELL	GTCP85-291	CH31824	3888210-1		
HONEYWELL	GTCP85-291	CH31723	369162		

* indicates that FAA-PMA is pending

**gasket included

(E) indicates exciter available for application

(O) equivalent OEM P/N. PMA by test and computation.

(T3) Pin Style

(T5) Button Style



APU IGNITERS

ENGINE MANUFACTURER	ENGINE MODEL	CHAMPION IGNITER P/N	OEM IGNITER P/N	ALT CHAMPION IGNITER P/N	ALT OEM IGNITER P/N
HONEYWELL	GTCP85-185L	CH31723	369162		
HONEYWELL	GTCP85-184	CH31824	3888210-1		
HONEYWELL	GTCP85-163CK	CH31723	369162	CH31824	3888210-1
HONEYWELL	GTCP85-139H	CH31723	369162	CH31824	3888210-1
HONEYWELL	GTCP85-129E/F/G	CH31723	369162	CH31824	3888210-1
HONEYWELL	GTCP85-129CK	CH31723	369162		
HONEYWELL	GTCP85-129AVB/C	CH31723	369162	CH31824	3888210-1
HONEYWELL	GTCP85-129	CH31723	369162	CH31824	3888210-1
HONEYWELL	GTCP85-115H-129	CH31723	369162	CH31824	3888210-1
HONEYWELL	GTCP85-115CK	CH31723	369162	CH31824	3888210-1
HONEYWELL	GTCP85-115C	CH31723	369162	CH31824	3888210-1
HONEYWELL	GTCP660-4R	FS118-1A	369949-1		
HONEYWELL	GTCP660-4	FS118-1A	369949-1		
HONEYWELL	GTCP36-300 (A)	CH31801	3876131-1		
HONEYWELL	GTCP36-280 (D)	CH34549	304634-2		
HONEYWELL	GTCP36-280 (B)	CH31801	3876131-1		
HONEYWELL	GTCP36-150 (A), 150 (AA)	CH34313	3888002-8		
HONEYWELL	GTCP36-150F2M	CH34706	3888002-5		
HONEYWELL	GTCP36-150 SERIES	CH34313	3888002-2		
HONEYWELL	GTCP36-150 (RR)	CH34549	304634-2		
HONEYWELL	GTCP36-150 (R,J)	CH34549	304634-2		
HONEYWELL	GTCP36-100W	CH34249	3888096-1		
HONEYWELL	GTCP36-100M	CH34249	3888096-1	CH34585	3888096-4
HONEYWELL	GTCP36-100H	CH34249	3888096-1	CH34713	3888366-1
HONEYWELL	GTCP36-100G	CH34249	3888096-1	CH34713	3888366-1
HONEYWELL	GTCP36-100E	CH34249	3888096-1	CH34713	3888366-1
HONEYWELL	GTCP36-100A	CH34249	3888096-1	CH34713	3888366-1
HONEYWELL	GTCP36-100K	CH34713	3888366-1	CH34249	3888096-1
HONEYWELL	GTCP331-600	CH31921	305766-4		
HONEYWELL	GTCP331-500 (B)	CH34731	3888267-7		
HONEYWELL	GTCP331-400	CH31921	305766-4		

* indicates that FAA-PMA is pending

**gasket included

(E) indicates exciter available for application

(O) equivalent OEM P/N. PMA by test and computation.

(T3) Pin Style

(T5) Button Style



APU IGNITERS

ENGINE MANUFACTURER	ENGINE MODEL	CHAMPION IGNITER P/N	OEM IGNITER P/N	ALT CHAMPION IGNITER P/N	ALT OEM IGNITER P/N
HONEYWELL	GTCP331-350 (C)	CH34549	304634-2		
HONEYWELL	GTCP331-250 (F)	CH31769 (LONG LIFE)	305766-1	CH31547C	369949-3
HONEYWELL	GTCP331-200 (A)	CH31547C	369949-3		
HONEYWELL	GTCP331-200	CH31769	305766-1		
HONEYWELL	GTCP131-9D	CH34803	3888267-4		
HONEYWELL	GTCP131-9B	CH31769	305766-1		
HONEYWELL	GTCP131-9A	CH31921	3057664		
HONEYWELL	GTCP36-100 SERIES	CH34492	3888096-2		
HONEYWELL	GTCP36-100E, -100M	CH34585	3888096-4		
PRATT & WHITNEY CANADA	PW901A	CH34511	3900274		
PRATT & WHITNEY CANADA	ST6L-73, ST6L-77	CH34055	3035102		
PRATT & WHITNEY CANADA	PW980A	CH34511	3900274		

IGNITER GASKETS

CHAMPION P/N	OEM P/N	APPLICABLE IGNITERS	OEM ENGINES
6860326	3017452	CH31659-3, CH31668-1, FHE246-4	PWC/JT15D
6860337	3010880	CH34055, AGF2-6, CH34406, CH34817	PWC/PT6, PW100
6800087	M677	CH31615, CH31713, CH31547C, CH31769, CH31930	HONEYWELL/GTCP36, TPE331
6800948	1337M46P01	CH31772A, CH31816, CH31842, CH31865, CH31900-6, CH31904-2 CH31926	GE/CF34, CFN56, C56
6860319	ST-3477-17	CH31955-1	PWC/PW150
N/A	31B3211-01	CH34682	

NOTES:

* indicates that FAA-PMA is pending

**gasket included

(E) indicates exciter available for application

(O) equivalent OEM P/N. PMA by test and computation.

(T3) Pin Style

(T5) Button Style





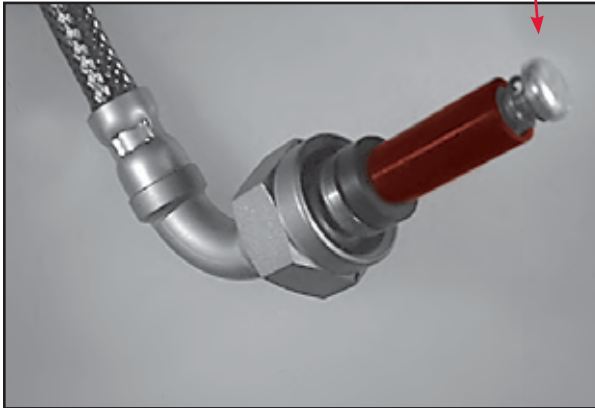
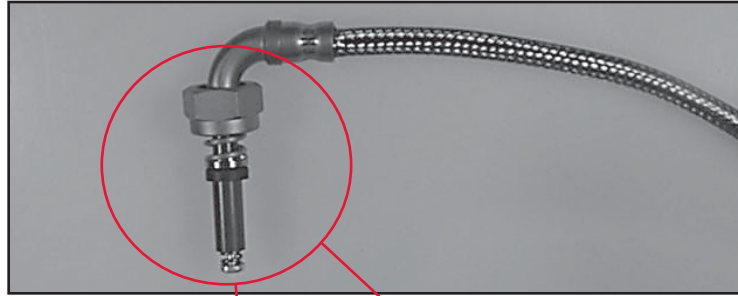
PRODUCT NEWS RELEASE

Champion Aerospace - an industry leader in ignition system technology for over 100 years is the preferred OEM and supplier to the world's military and civilian aviation marketplace.

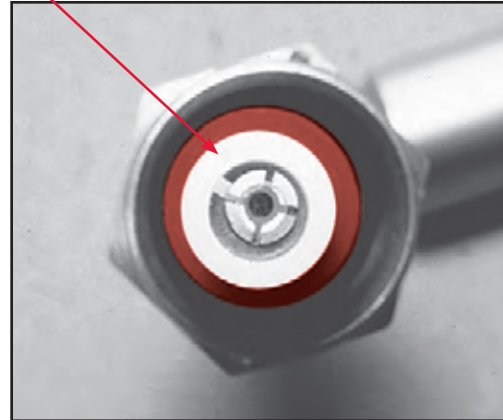
Today's high performance aircraft turbine engines require products which incorporate advanced technology that complement and enhance their operation. Meeting the airlines' need for quality and reliability in today's demanding operating environment, Champion Aerospace introduces a complete line of high performance ignition leads and components.

- All Champion air cooled leads supported by a superior manufacturer's warranty at a lower initial cost
- Unique lead design = Greater cooling airflow = Reduced operating cost
- FAA Approved - Meets or exceeds original engine manufacturers' specifications
- Worldwide Product & Sales Support

LEADS



BUTTON STYLE CONNECTOR (T5)



PIN STYLE CONNECTOR (T3)



LEADS

ENGINE MANUFACTURER	ENGINE MODEL	LEFT OR PRIMARY LEAD P/N	LEFT OR PRIMARY OEM P/N	RIGHT OR ALT LEAD P/N	RIGHT OR ALT OEM P/N
CFM INTERNATIONAL	CFM56-3 SERIES	CH53552-1	9339M26P13 (O)	CH53552-2	9339M26P14 (O)
CFM INTERNATIONAL	CFM56-5 (DAC)	CH53569-3	9387M24P18 (O)	CH53569-3	9387M24P18 (O)
CFM INTERNATIONAL	CFM56-5A & 5B SERIES	CH53569-1	9387M24P16 (O)	CH53569-1	9387M24P16 (O)
CFM INTERNATIONAL	CFM56-5C SERIES	CH53569-2	9387M24P17 (O)	CH53569-2	9387M24P17 (O)
CFM INTERNATIONAL	CFM56-7 SERIES (DAC)	CH53440-1	1853M13P04 (O)	CH53440-1	1853M13P04 (O)
CFM INTERNATIONAL	CFM56-7 SERIES (SAC)	CH53440	1853M13P01 (O)	CH53440	1853M13P01 (O)
GENERAL ELECTRIC	CF34-10E				
GENERAL ELECTRIC	CF34-1A				
GENERAL ELECTRIC	CF34-3A				
GENERAL ELECTRIC	CF34-3A1, -3B, -3B1	CH53515-4	4096T96P04 (O)	CH53515-3	4096T96P03 (O)
GENERAL ELECTRIC	CF34-8C1, C5	CH53515-1	4096T96P07 (O)	CH53515-2	4096T96P08 (O)
	CF34-8C5A1/A3	CH53515-1	4096T96P07 (O)	CH53515-5	4096T96P11 (O)
GENERAL ELECTRIC	CF6-45 & 50 SERIES	CH53566-1	1346M56P04 (O)	CH53566-1	1346M56P04 (O)
GENERAL ELECTRIC	CF6-80C SERIES	CH53566-1	1346M56P04 (O)	CH53566-1	1346M56P04 (O)
GENERAL ELECTRIC	CF6-80E SERIES	CH53566-3	1346M56P07 (O)	CH53566-1	1346M56P04 (O)
HONEYWELL/GE	CFE738-1-1B	53323-4	3051406-4		
HONEYWELL	ALF502 SERIES	53282	2-303-025-02	53283	2-303-079-02
HONEYWELL	LF507 SERIES	53214	2-303-766-02	53215	2-303-767-02
HONEYWELL	ALF502 SERIES, LF507 SERIES	53216-1	2-303-768-03	53217-1	2-303-769-03
HONEYWELL	HTF7000	CH53542-3	3038111-3		
HONEYWELL	TFE731 SERIES	53142-10	3071590-10		
HONEYWELL	TFE731-2, -3, -3A, -3AR, -3B, -3BR, -3R, -5, -5A	53142-11			
HONEYWELL	TFE731-2, -3A, -3AR, -3B, -3BR, -3R, -5, -5A	53142-12	3071590-12		
HONEYWELL		53142-13	3071590-13		
HONEYWELL	TPE331-10, -11, -12	50221-32	369876-32		
	TPE331-10, -11, -12	50221-33	369876-33		
HONEYWELL	TPE331-1, -2, TPE331-5, -6, -8, -10, TPE331-10, -10U, -10R	50221-24	369876-24		

* indicates that FAA-PMA is pending

**gasket included

(E) indicates exciter available for application

(O) equivalent OEM P/N. PMA by test and computation.

(T3) Pin Style

(T5) Button Style



LEADS

ENGINE MANUFACTURER	ENGINE MODEL	LEFT OR PRIMARY LEAD P/N	LEFT OR PRIMARY OEM P/N	RIGHT OR ALT LEAD P/N	RIGHT OR ALT OEM P/N
HONEYWELL	TPE331-8, -10, -11, -12, TPE/TSE331-3	50221-25	369876-25		
HONEYWELL	TPE331-10UA, TPE331-11, -12, TPE331-10/-10U	50221-28	369876-28		
HONEYWELL	TPE331-10UA, -10, -11, -12, TPE/TSE331-3	50221-29	369876-29		
HONEYWELL	TPE331-10, -11, -12	50221-31	369876-31		
HONEYWELL	TPE331-1, -2, -5	50221-15	369876-15		
HONEYWELL	TPE331-1, -2, -5	50221-16	369876-16		
HONEYWELL	TPE331-SR1	50221-17	369876-17		
HONEYWELL	TPE331-SRI, -SR11	50221-18	369876-18		
HONEYWELL	TPE331-SRI, -SR11, TPE331-1, -2	50221-19	369876-19		
HONEYWELL	TPE331-SRI, -SR11	50221-21	369876-21		
HONEYWELL	TPE331-1, -2, TPE331-5, -6, TPE331-10, -10U, -10R	50221-22	369876-22		
HONEYWELL	TPE/TSE331-3	50221-6	369876-6		
HONEYWELL	TPE331-SRI, -SR11, TPE331-1, -2, TPE/TSE331-3	50221-7	369876-7		
HONEYWELL	TPE331-1, -2, TPE331-5, -6, TPE331-10, -10U, -10R	50221-8	369876-8		
HONEYWELL	TPE331-5, -6, TPE331-10, -10U, -10R, TPE331-SRI, -SR11	50221-9	369876-9		
HONEYWELL	TPE KITS	50221-10	369876-10		

LEADS

* indicates that FAA-PMA is pending

**gasket included

(E) indicates exicter available for application

(O) equivalent OEM P/N. PMA by test and computation.

(T3) Pin Style

(T5) Button Style



LEADS

ENGINE MANUFACTURER	ENGINE MODEL	LEFT OR PRIMARY LEAD P/N	LEFT OR PRIMARY OEM P/N	RIGHT OR ALT LEAD P/N	RIGHT OR ALT OEM P/N
HONEYWELL	TPE331-1, -2, TPE331-5, -6, TPE331-SRI, -SRII	50221-12	369876-12		
HONEYWELL	TPE331-14A, -14B	53133-5	3105589-5		
HONEYWELL	TPE331-14GR/HR	53338-1 53339-1	3105901-1 3105902-1		
INTERNATIONAL AERO	V2500-A5	CH53564	5U00072 (O)		
PRATT & WHITNEY	JT8D-209, -217	CH53568-1	5000471-01 (O)	CH53568-2	5000472-01 (O)
PRATT & WHITNEY	PW2000	CH53556	1B7426 (O)	CH53556	1B7426 (O)
PRATT & WHITNEY	PW4000	CH53551-1	5OU683 (O)	CH53551-1	5OU683 (O)
PRATT & WHITNEY	PW4077, PW4077D, PW4084, PW4090, PW4098	CH53551-1	5OU683 (O)	CH53551-1	5OU683 (O)

NOTES:



LEADS

ENGINE MANUFACTURER	ENGINE MODEL	LEFT OR PRIMARY LEAD P/N	LEFT OR PRIMARY OEM P/N	RIGHT OR ALT LEAD P/N	RIGHT OR ALT OEM P/N
PRATT & WHITNEY CANADA	-4D, -5, -5A, -5D JT15D-1, -1A, -1B, -4, -4B, -4C, -4D, -5	53067-21 (T3)	3107371-01	53067-38.5 (T3)	3107371-02
PRATT & WHITNEY CANADA	PT6T-3, -3B, -3BE, -3D, -6, -6B, -3BF, -3BG, -3DE, -3DF	CH53399-01	3119829-01		
PRATT & WHITNEY CANADA	PT6-42, -42A, -67P -67B, -114, -114A, -67F	CH53399-02	3119830-01		
PRATT & WHITNEY CANADA	PT6A-6, -6A, -6B, -11, -11AG, -15AG, -20, -20A, -20B, -21, -27, -28, -34, -34AG, -34B, -36, -110, -112, -114, -114A, -116, -121, -135, -135A	CH53399-04	3119832-01		
PRATT & WHITNEY CANADA	PT6A-50	CH53399-05	3119835-01	50383-C	3029107
PRATT & WHITNEY CANADA	PT6A-41, -42, -42A, -45A, -45B, -45R, -52, -60A, -60AG, -61, -64, -65AG, -65AR, -65B, -65R, -66, -66A, -66B, -66D, -67, -67A, -67AF, -67AG, -67B, -67D, -67F, -67R, -67T, -68	CH53399-06	3119836-01		
PRATT & WHITNEY CANADA	PT6A-114, -114A, -135A, -25, -25A, -25C, -34, -36, -38, -135, PT6B-35F	CH53399-07	3119833-01		
PRATT & WHITNEY CANADA	T400-CP-400, T400-WV-402, ST6T-75, ST6T-76	CH53399-02	3119830-01		
PRATT & WHITNEY CANADA	PT6B-36, -36A	50383-J	3033691		
PRATT & WHITNEY CANADA	PT6C-67C, -67D	CH53490	3050604-01		
PRATT & WHITNEY CANADA	ST6L-73	CH53399-08	3119834-01		

PRATT & WHITNEY CANADA

PW118, -118A, -118B, -119A, 53335-01

3117291-01

* indicates that FAA-PMA is pending

**gasket included

(E) indicates exciter available for application

(O) equivalent OEM P/N. PMA by test and computation.

(T3) Pin Style

(T5) Button Style



LEADS

ENGINE MANUFACTURER	ENGINE MODEL	LEFT OR PRIMARY LEAD P/N	LEFT OR PRIMARY OEM P/N	RIGHT OR ALT LEAD P/N	RIGHT OR ALT OEM P/N
	-119B, -119C, -120, -120A, -121, -121A, -123, -123AF, -123B, -123C, -123D, -123E, -124B, -125B, -126, -126A, -127, -127A, -127B, -127C, -127D, -127E, -127F, -127G, -127M				
PRATT & WHITNEY CANADA	PW115, PW118, PW119, PW120, PW121, PW123, PW124, PW125, PW126, PW127	50383-K	3035333		
PRATT & WHITNEY CANADA	PW150A	CH53536-1 CH53456-2	3056566-02 3122414-04		
PRATT & WHITNEY CANADA	PW206B	CH53442-3	3122957-01		
PRATT & WHITNEY CANADA	PW206A, C, E	CH53442-4	3121144-02		
PRATT & WHITNEY CANADA	PW207C, D, D1, D2, E	CH53442-4	3121144-02		
PRATT & WHITNEY CANADA	PW305A, -B	CH53238-1	318B3615-02		
PRATT & WHITNEY CANADA	PW307A	CH53544-1	30P0605-02		
PRATT & WHITNEY CANADA	PW308A	CH53483-5	30C1133-03	CH53483-7	30C2172-04
PRATT & WHITNEY CANADA	PW308C	CH53483-5	30C1133-03	CH53483-7	30C2172-04

NOTES:

ROLLS ROYCE	TRENT 900 SERIES	CH53538-4	CH53538-4		
-------------	------------------	-----------	-----------	--	--

* indicates that FAA-PMA is pending **gasket included (E) indicates exciter available for application (O) equivalent OEM P/N. PMA by test and computation. (T3) Pin Style (T5) Button Style

LEADS



LEADS

ENGINE MANUFACTURER	ENGINE MODEL	LEFT OR PRIMARY LEAD P/N	LEFT OR PRIMARY OEM P/N	RIGHT OR ALT LEAD P/N	RIGHT OR ALT OEM P/N
ROLLS ROYCE	TRENT 1000 SERIES	CH53571	CH53571		
ROLLS-ROYCE ALLISON	250-B17C (ALL), B17D (ALL), B17E, B17F, B17F-1, B17F-2, C20S	CH53351	23060813		
ROLLS-ROYCE ALLISON	250-C30 (ALL), -C30G, -C30G/2, -C30M, -C30S, -C40B	53158	23060815		
ROLLS-ROYCE ALLISON	250-C20W, -C30 (ALL), -C30G, -C30L, -C30M, -C30P, -C30R, -C30R/1, -C30S, -C30U, -C47B, -C47M	53159	23060816		
ROLLS-ROYCE ALLISON	250-C28B, -C28C	53153	23060817		
ROLLS-ROYCE ALLISON	250-C20F, C20R (ALL)	53270	23060818		
ROLLS-ROYCE ALLISON	AE3007	CH53557-1	23054367		
TURBOMECA	ARRIEL 1A, -1A1, -1A2, -1B, -1C, -1C1, -1C2, -1D, -1D1, -1E2, -1K, -1K1, -1S, -1S1	53317-3	9550166530		
TURBOMECA	ARRIEL 1A, -1A1, -1A2, -1B, -1D, -1D1, -1S, -1S1, -2B	53317-3	9550166530		
TURBOMECA	ARRIUS 2F	53317-3	9550166530		
WILLIAMS INTERNATIONAL	FJ33	CH53543-2	67787	CH53543-1	67788
WILLIAMS INTERNATIONAL	FJ44-1AP, -2A, -2C, -3A -3A-24, -4A	53279	50852	53221	50853

NOTES:

* indicates that FAA-PMA is pending

**gasket included

(E) indicates exicter available for application

(O) equivalent OEM P/N. PMA by test and computation.

(T3) Pin Style

(T5) Button Style



APU LEADS

ENGINE MANUFACTURER	ENGINE MODEL	LEFT OR PRIMARY LEAD P/N	LEFT OR PRIMARY OEM P/N	RIGHT OR ALT LEAD P/N	RIGHT OR ALT OEM P/N
HAMILTON SUNDSTRAND APIC	APS 2000	53267-3	179505-3	53267-4	179505-4
HAMILTON SUNDSTRAND APIC	APS 2100	53267-4	179505-4		
HAMILTON SUNDSTRAND APIC	APS 2300	CH53539-3	4951693-3	CH53539-4	4951693-4
HAMILTON SUNDSTRAND APIC	APS 3200	CH53379-2	4950581-2		
HONEYWELL	131-9A	53179-13	3876132-13		
HONEYWELL	131-9B	53179-12	3876132-12		
HONEYWELL	131-9D	53368-1	3888316-1		
HONEYWELL	GTCP331-200	53109-1	3888076-1	53109-2	3888076-2
				53109-3	3888076-3
HONEYWELL	GTCP331-250	53109-1	3888076-1	53109-2	3888076-2
				53109-3	3888076-3
HONEYWELL	GTCP331-350 (C)	53179-6	3876132-6	53179-7	3876132-7
HONEYWELL	GTCP331-500B	53331-2	3888283-2	53331-4	3888283-4
HONEYWELL	GTCP36-100 (M)	53359-3	3888302-3		
HONEYWELL	GTCP36-100E	50160-61	369259-61		
HONEYWELL	GTCP36-150 (A)	53359-6	3888302-6		
HONEYWELL	GTCP36-150 (AA)	53359-6	3888302-6		
HONEYWELL	GTCP36-150 (CX)	53359-6	3888302-6		
HONEYWELL	GTCP36-150 (J)	53359-6	3888302-6		
HONEYWELL	GTCP36-150 (M)	53359-3	3888302-3		
HONEYWELL	GTCP36-150 (R)	53359-9	3888302-9		
HONEYWELL	GTCP36-150 (RJ)	53359-15	3888302-15	53359-16	3888302-16
HONEYWELL	GTCP36-150 (RR)	53359-18	3888302-18		
HONEYWELL	GTCP36-150 (W)	53359-6	3888302-6		
HONEYWELL	GTCP36-280 (B)	53236-5	304269-5		
HONEYWELL	GTCP36-300	53179-1	3876132-1	53179-8	3876132-8
HONEYWELL	GTCP85-129	50160-7	369259-7	50160-32	369259-32
HONEYWELL	GTCP85-129CK	50160-7	369259-7		
HONEYWELL	GTCP85-98	50160-7	369259-7		
HONEYWELL	GTCP85-98C	50160-7	369259-7		
HONEYWELL	GTCP85-98CK	50160-7	369259-7		

* indicates that FAA-PMA is pending

**gasket included

(E) indicates exciter available for application

(O) equivalent OEM P/N. PMA by test and computation.

(T3) Pin Style

(T5) Button Style



APU LEADS

ENGINE MANUFACTURER	ENGINE MODEL	LEFT OR PRIMARY LEAD P/N	LEFT OR PRIMARY OEM P/N	RIGHT OR ALT LEAD P/N	RIGHT OR ALT OEM P/N
HONEYWELL	GTCP85-98D	50160-20	369259-20		
HONEYWELL	GTCP85-98DC (A)	50160-20	369259-20		
HONEYWELL	GTCP85-98DC (B)	50160-20	369259-20		
HONEYWELL	GTCP85-98DC (C)	50160-20	369259-20		
HONEYWELL	GTCP85-98DCK	50160-20	369259-20		
HONEYWELL	GTCP85-98DHF	50160-20	369259-20		
HONEYWELL	GTCP85-98DHF (A)	50160-20	369259-20		
HONEYWELL	RE220 (GV)	53348-3	WB3888353-3	53348-4	WB3888353-4
HONEYWELL	TSCP700	50160-47	369259-47	50160-48	369259-48
PRATT & WHITNEY CANADA	PW901A	50383-L	3910351-01		
PRATT & WHITNEY CANADA	ST6L-73	CH53399-08	3119834-01		
PRATT & WHITNEY CANADA	ST6L-77	CH53399-08	3119834-01		
PRATT & WHITNEY CANADA	PW980A	CH53567	3901208-01		

NOTES:

* indicates that FAA-PMA is pending **gasket included (E) indicates exicter available for application (O) equivalent OEM P/N. PMA by test and computation. (T3) Pin Style (T5) Button Style

APU LEADS



AIRCRAFT EXCITERS

ENGINE MANUFACTURER	CHAMPION P/N	OEM P/N	ENGINE MODEL	CONNECTORS
HAMILTON SUNDSTRAND	CH92073-1, -2 CH92073-2 *	4952793 4952961	APS2300 (APU)	SINGLE INPUT/DUAL OUTPUT
HONEYWELL	CH92036	3888058-7	131-9A, -9B, 331-600	SINGLE INPUT/SINGLE OUTPUT
HONEYWELL	305050	2-303-026-02	ALF 502R-3, -3A, -5, ALF502L, L2, L2A, L2C, L3, LF507-1F, -1H	SINGLE INPUT/SINGLE OUTPUT
HONEYWELL	CH92074-2 CH92074-6 *	3038100-5 3038100-6	HTF7000	SINGLE INPUT/DUAL OUTPUT
HONEYWELL	305012-2	3070378-2	TFE731-2-1C/-2B, TPE731-3-1C/1E, TPE731-3-1F/1G, TPE731-3A-2B/-200G, TPE731-3AR/-200G, TPE731-3B-100S, TFE731-3R-1D, TFE731-3BR-100S	SINGLE INPUT/DUAL OUTPUT
HONEYWELL	305012-2	3070378-2	TPE331-10U, TPE331-11, TPE331-12, TPE331-14A/14B	SINGLE INPUT/DUAL OUTPUT
GENERAL ELECTRIC	CH92100	9238M66P05 9238M66P07, 9238M66P08	CFM56 SERIES, CF6 SERIES, CF34 SERIES, GE90 SERIES	SINGLE INPUT/SINGLE OUTPUT
PRATT & WHITNEY CANADA	CH92028	3041996-01	JT15D-1, -1A, -1B, -4, -4B, -4D, -5, -5A	SINGLE INPUT/SINGLE OUTPUT
PRATT & WHITNEY CANADA	CH92043-2 CH92043-3	3122413-07 3122413-08	PW150	SINGLE INPUT/DUAL OUTPUT
PRATT & WHITNEY CANADA	CH92051-3 CH92051-4	30C1132-04 30C1132-05	PW308C	SINGLE INPUT/DUAL OUTPUT
PRATT & WHITNEY CANADA	CH92083-5 CH92083-6	30P0604-06 30P0604-07	PW307A	SINGLE INPUT/DUAL OUTPUT
PRATT & WHITNEY CANADA	CH92015 CH92106	3043937-01, -02, -03	PW206A, B, B2, C, E, PW207C, D, D1, D2, E, PT6C-67C, -67D	SINGLE INPUT/DUAL OUTPUT
PRATT & WHITNEY CANADA	CH92015-1 CH92106-1	3043937-04 3043937-06	PT6A-21, -27, -28, -34, -34AG, -34B, -36, -41, -42, -52, -60A, -61, -65B, -67B, -67D, -67P, -114, -114A, -135, -135A, PT6C-67C, PT6T-3, -3B, -3BE, -3BF, -3BG	SINGLE INPUT/DUAL OUTPUT
PRATT & WHITNEY CANADA	CH92090-1 CH92090-2	30C4946-02 30C4946-03	PW308A	SINGLE INPUT/DUAL OUTPUT
ROLLS ROYCE	CH92077	CH92077	TRENT 900	SINGLE INPUT/SINGLE OUTPUT
ROLLS ROYCE	CH92095-3 *	CH92095-3	TRENT 1000	SINGLE INPUT/SINGLE OUTPUT
WILLIAMS INT'L	CH92007-1	68145	FJ44-1AP, -2A, -3A-2A, -4A	SINGLE INPUT/SINGLE OUTPUT
WILLIAMS INT'L	CH92070-1	71294	FJ33	SINGLE INPUT/DUAL OUTPUT

* indicates that FAA-PMA is pending

**gasket included

(E) indicates exciter available for application

(O) equivalent OEM P/N. PMA by test and computation.

(T3) Pin Style

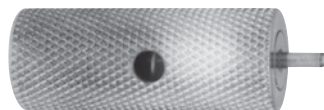
(T5) Button Style



CT-496

Igniter Lead Connector Wear Gauge

Igniter lead connector wear gauge for ARP670 Type 2M fittings common to PT6, PW100, GTCP331 leads and others. Features a calibrated pin to measure connector wear. Opposite end sized to measure neoprene grommet expansion.



CT-497

Igniter Lead Wear Gauge

Igniter lead connector wear gauge for ARP670 Type 3M fittings common to TPE6331, TFE731 leads and others. Features a spring weighted pin for an accurate "pull test" of connectors.

Size: 15/16" (3.33 cm)

Shipping Weight: 1 oz. (311 g)

Carton Size: 3-1/2" x 1-1/4" x 1-1/4"
(8.89 x 3.18 x 3.18 cm)

Note: Many leads incorporate type 2M & 3M connectors at opposite ends. Both CT-496 & CT-497 gauges are recommended.



CT-456A

Spark Plug/Igniter Viewer

Permits close examination of fuel deposits over the entire length of the insulator nose revealing incomplete or uneven abrasive cleaning. Detects cracked or chipped insulators. Checks condition of electrode sparking surfaces and dramatizes the need for replacement of worn-out spark plugs.

Size: New

Replacement Bulb: P/N: 2300-350-000



CT-494

Igniter Erosion Gauge

The CT-494 accurately determines wear on 10 of our most popular surface gap igniters, insuring maximum igniter life without exceeding safe wear limitations. For use with following igniters:

CH31547, CH31621, CH34055, CH34168, CH34187, CH34269, CH34304, CH34406, FHE146-7, FHE246-4, CH34736, CH34743, CH34760-1, CH34761, CH34829, CH34851-1, and Y242-5

Heavy duty protective sleeve included.

Shipping Weight: 1 oz. (28 g)



CT-922

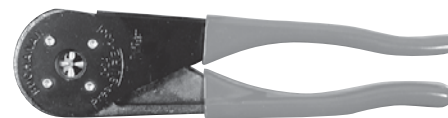
Erosion Gauge

The CT-922 is a go/no go erosion gauge for the CF34 igniter part numbers CH31858-2 and CH31926. Drop Measurement: 0.190" (4.83 mm)

CT-923

Erosion Gauge

The CT-923 is a go/no go erosion gauge for the CFM56 igniter part numbers CH31900-6. Drop Measurement: 0.210" (5.334 mm)



NO. 52243

Crimping Tool

A special tool used to crimp turbine ignition lead contacts to the unshielded center wire.

Shipping Weight: 14.4 oz. (408 g)



CT-498

Igniter Erosion Gauge

A special tool designed specifically to measure the firing end erosion wear of Champion CFM56 series igniters. Calibrated to determine the extent of erosion of the undercut area of the steel not easily visible to the eye. The measuring tip is shaped to reach into the undercut, true-wear area. For use with Champion CH31806 and CH31900 igniters only.

Size: 6-1/4" x 4-1/4" x 1-1/2"
(15.8 x 10.7 x 3.8 cm)

NOTE: The tool is not interchangeable with the CT492 which is similar.



CT-492

Igniter Erosion Gauge (Formerly CT-468)

A special tool designed specifically to measure the erosion-wear of Champion AA series igniters. Calibrated in color scale segments to determine the extent of erosion of the undercut area of the steel shell, not easily visible to the eye. Measuring tips shaped to reach into the undercut, true-wear area. Instructions for use included in special plastic box.

Size: 6-1/4" x 4-1/4" x 1-1/2"
(15.8 x 10.7 x 3.8 cm)

Shipping Weight: 10 oz. (238 g)



CT-5300

Ignition Lead Test Bench

Used to measure the airflow through the ignition lead and to prevent airflow through either the igniter or exciter end terminations. It also measures dielectric resistance, conductor path resistance and return path resistance. The unit measures leads for CF6, CFM56, PW2000, PW4000, V2500 and CF34. Please contact Champion Aerospace for a CT-5300 quote.



PART NUMBER CROSS-REFERENCE

CHAMPION P/N	OEM P/N	CHAMPION P/N	OEM P/N	CHAMPION P/N	OEM P/N	CHAMPION P/N	OEM P/N	CHAMPION P/N	OEM P/N
53057	3108407-01	50221-25	369876-25	53179-8	3876132-8	6800948	1337M46P01	CH31843	9101M37P71
53153	22306817	50221-28	369876-28	53216-1	2-303-768-03	6860319	ST-3477-18	CH31858-1	4096T38P10
53158	23060815	50221-29	369876-29	53217-1	2-303-769-03	N/A	31B3211-01	CH31858-2	4096T38P10
53159	23060816	50221-31	369876-31	53236-5	304269-5	AA134S-1	709525	CH31876-6	57846
53214	2-303-766-02	50221-32	369876-32	53267-3	179505-3	AA138S-4B	9101M37P36	CH31898-1	23062672
53215	2-303-767-02	50221-33	369876-33	53267-4	179505-4	AA30S-9A	5007M32P2	CH31900-6	1374M13P11
53221	50853	50221-6	369876-6	53280-1	2-303-742-03	AA33SD	424848	CH31904-2	9387M23P09
53247	23060814	50221-7	369876-7	53281-1	2-303-743-03	AA63SA	487238	CH31905	1305M52P09
53270	23060818	50221-8	369876-8	53300-1	3118347-01	AA72SA	487238	CH31918-2	3122415-03
53279	50852	50221-9	369876-9	53300-2	3118347-02	AGF2-6	3014054	CH31921	305766-4
53282	2-303-025-02	50383-K	3035333	53317-3	9550166530	CH31547C	369949-3	CH31923-5	51J015
53283	2-303-079-02	50383-L	3910351-01	53335-01	3117291-01	CH31615	369964-5	CH31925-5	30C1356-05
53302	3038915	53067-21	3107371-01	53331-2	38888283-2	CH31621A	3070967-1	CH31926	4096T33P07
305050	2-303-026-02	53067-38.5	3107371-02	53331-4	38888283-4	CH31641	3001430-1	CH31929-3	30C1356-03
305012-2	3070378-2	53109-1	388076-1	53338-1	3105901-1	CH31642	3001430-2	CH31929-4	30C1356-04
305088-2	179420-2	53109-2	388706-2	53339-1	3105902-1	CH31967	78214	CH31930	WB3888446-1
305115-1	50846	53109-3	3888076-3	53348-3	WB3888353-3	CH31701A	3105547-1	CH31955-1	3056557-02
50160-7	369259-7	53133-5	3105589-5	53348-4	WB3888353-4	CH31706D	9276M36P05	CH31956	68032
50160-20	369259-20	53133-6	3105589-6	53359-15	3888302-15	CH31713	369964-6	CH31958-3	30P0606-03
50160-47	369259-47	53133-7	3105589-7	53359-16	3888302-16	CH31723	369162	CH31964	JS100A1
50160-48	369259-48	53142-10	3071590-10	53359-18	3888302-18	CH31753A	9382M95P05	CH31965	1374M13P11
50160-61	369259-61	53142-11	3071590-11	53359-3	3888302-3	CH31767	3003119-1	CH91967	78214
50221-12	369876-12	53142-12	3071590-12	53359-6	3888302-6	CH31768	3003119-2	CH34016	1-300-348-06
50221-15	369876-15	53142-13	3071590-13	53359-9	3888302-9	CH31769	305766-1	CH34016-1	1-300-348-07
50221-16	369876-16	53164-11	3070873-11	53367-01	3120676-01	CH31772A	9387M23P01	CH34055	3035102
50221-17	369876-17	53164-3	3070873-3	53368-1	3888316-1	CH31801	3876131-1	CH34095	37B200275P102
50221-18	369876-18	53164-4	3070873-4	53402-02	3011871	CH31815	3074541-1	CH34126	CBS113-1,2
50221-19	369876-19	53179-1	3876132-1	53542-1	3038111-1	CH31815-1	3074541-3	CH34135	2-300-821-01
50221-21	369876-21	53179-12	3876132-12	6800087	M677	CH31815-2	3074541-4	CH34158	4053T22P01
50221-22	369876-22	53179-6	3876132-6	6860326	3017452	CH31824	3888210-1	CH34168	6877518
50221-24	369876-24	53179-7	3876132-7	6860337	3010880	CH31832	23036808	CH34177	CBS112/4

* indicates that FAA-PMA is pending

**gasket included

(E) indicates exciter available for application

(O) equivalent OEM P/N. PMA by test and computation.

(T3) Pin Style

(T5) Button Style



PART NUMBER CROSS-REFERENCE

CHAMPION P/N	OEM P/N	CHAMPION P/N	OEM P/N	CHAMPION P/N	OEM P/N	CHAMPION P/N	OEM P/N	CHAMPION P/N	OEM P/N
CH34187-A	6899084	CH34758-2	3050627-03	CH53463	3123061-01	CH92007	56635	FHE159-6	3888002-1
CH34249	3888096-1	CH34760-1	CH34760-1	CH53483-5	30C1133-03	CH92007-1	68145	FHE159-6	26519-1
CH34269	23006266	CH34761	L907032	CH53483-6	30C2172-03	CH92015	3043937-03	FHE164	ECR114-2
CH34304	23006267	CH34803	3888267-4	CH53483-7	30C2172-04	CH92015-1	3043937-04	FHE176A	CR103
CH34313	3888002-2	CH34804-3	31J1552-01	CH53490	3050604-01	CH92028	3041996-01	FHE19-6L	CR104-2
CH34406	3035882	CH34812-2	67906	CH53515-1	4096T96P07	CH92036	3888058-7	FHE205B	CBS116
CH34419	5044T67P07	CH34817	3055161-01	CH53515-2	4096T96P08	CH92043-2	3122413-07	FHE246-4 (T3)	3039828
CH34439	4053T22P06	CH34826-6	3038110-6	CH53515-3	4096T96P03	CH92043-3	3122413-08	FHE256-10A	4048T30P06
CH34452	A2-300-732-05	CH34829	CH34829	CH53515-4	4096T96P04	CH92051-2	30C1132-03	FHE256-10B	4048T30P07
CH34492	3888096-2	CH34834	4952382	CH53515-5	4096T96P11	CH92051-4	30C1132-05	FHE267-2A	CBS111-2
CH34511	3900274	CH34848	4952647	CH53530	3056743-01	CH92070-1	71274	FS109-1A	6847727
CH34549	304634-2	CH34856	4952846	CH53536	3056566-01	CH92073-1	4952793	FS118-1A	369949-1T
CH34553	3888096-3	CH38013	160544-1	CH53536-1	3056566-02	CH92073-2	495296	FS118-1A	369949-1
CH34585	3888096-4	CH53238-1	31B3615-02	CH53538-4	CH53538-4	CH92074-2	3038100-5	FS153-1	369964-4
CH34593	9550166660	CH53351	23060813	CH53539-3	4951693-3	CH92074-6	3038100-6	FS153-1 **	369964-4
CH34595	9550168770	CH53399-01	3119829-01	CH53539-4	4951693-4	CH92077	CH92077	FS47-11	75153R
CH34627	3105893-5	CH53399-04	3119832-01	CH53544-1	30P0605-02	CH92083-3	30P0604-04	FS47-11	75153
CH34627-1	3105893-5	CH53399-05	3119835-01	CH53551-1	50U683	CH92083-6	30P0604-07	FS89-1	6805734
CH34630	N/A	CH53399-06	3119836-01	CH53552-1	9339M26P13	CH92083-4	30P0604-05	Y183-5	L912019
CH34643-1	3120953-01	CH53399-07	3119833-01	CH53552-2	9339M26P14	CH92090-1	30C4946-02	Y183-6	L912023
CH34659-3 (T5)	3119400-01	CH53399-08	3119834-01	CH53556	1B7426	CH92090-2	30C4946-03	Y209-2	3105893-4
CH34661	4048T30P10	CH53399-08	3119834-01	CH53557-1	23054367	CH92100	9238M66P05	Y242-5	272143
CH34668-1 (T5)	3117463-01	CH53399-09	3119832-02	CH53557-2	23054368	CH92100	9238M66P07	YA211-25	L912018
CH34682	31B5168-01	CH53399-10	3119835-02	CH53564	5U0072	CH92100	9238M66P08	YB63-1	6877518
CH34706	3888002-5	CH53440	1853M13P01	CH53566-1	1346M56P04	CH92106	3043937-05	YW90	L912017
CH34723	3120880-01	CH53440-1	1853M13P04	CH53566-3	1346M56P07	CH92106-1	3043937-06		
CH34730	WB3888401-1	CH53442-2	3121147-01	CH53568-1	500471-01	FHE111-3	04026T27P01		
CH34731	3888267-7	CH53442-3	3122957-01	CH53568-2	500472-01	FHE113-1	01-300-197-03		
CH34736	L907030	CH53442-4	3121144-02	CH53569-1	9387M24P16	FHE146-7	A37C311124		
CH34743	L907031	CH53450	3121914-01	CH53569-2	9387M24P17	FHE151	424815		
CH34745	9550175400	CH53456-2	3122414-04	CH53569-3	9387M24P18	FHE151	C424815		

* indicates that FAA-PMA is pending

**gasket included

(E) indicates exciter available for application

(O) equivalent OEM P/N

(T3) Pin Style

(T5) Button Style



PART NUMBER CROSS-REFERENCE

OEM P/N	CHAMPION P/N	OEM P/N	CHAMPION P/N	OEM P/N	CHAMPION P/N	CHAMPION P/N	OEM P/N	CHAMPION P/N	OEM P/N
50846	305115-1	4952647	CH34848	1346M56P04	CH53566-1	304269-5	53236-5	30C1356-04	CH31929-4
50852	53279	6847727	FS109-1A	1346M56P07	CH53566-3	3043937-03	CH92015	30C1356-05	CH31965
50853	53221	6877518	CH34168	1374M13P11	CH31900-6	3043937-04	CH92015-1	30C1356-05	CH31929-5
56635	CH92007	6877518	YB63-1	160544-1	CH38013	3043937-05	CH92106	30C2172-03	CH53483-6
57846	CH31876-6	6899084	CH34187-A	179420-2	305088-2	3043937-06	CH92106-1	30C2172-04	CH53483-7
67906	CH34812-2	22306817	53153	179505-3	53267-3	304634-2	CH34549	30C4946-02	CH92090-1
68032	CH31956	23006266	CH34269	179505-4	53267-4	3050604-01	CH53490	30C4946-03	CH92090-2
68145	CH92007-1	23006267	CH34304	1853M13P01	CH53440	3050627-03	CH34758-2	30P0604-04	CH92083-3
71274	CH92070-1	23036808	CH31832	1853M13P04	CH53440-1	3055161-01	CH34817	30P0604-05	CH92083-4
75153	FS47-11	23054367	CH53557-1	1B7426	CH53556	3056557-02	CH31955-1	30P0604-07	CH92083-6
78214	CH31967	23054368	CH53557-2	2-300-732-05	CH34452A	3056566-01	CH53536	30P0605-02	CH53544-1
272143	Y242-5	23060814	53247	2-300-821-01	CH34135	3056566-02	CH53536-1	30P0606-03	CH31958-3
369162	CH31723	23060815	53158	2-303-025-02	53282	3056743-01	CH53530	3105547-1	CH31701A
424815	FHE151	23060816	53159	2-303-026-02	305050	305766-1	CH31769	3105589-5	53133-5
424815	FHE151C	23060818	53270	2-303-079-02	53283	305766-4	CH31921	3105589-6	53133-6
424848	AA33SD	23062672	CH31898-1	2-303-742-03	53280-1	3070378-2	305012-2	3105589-7	53133-7
487238	AA63SA	9550166530	53317-3	2-303-743-03	53281-1	3070873-11	53164-11	3105893-4	Y209-2
487238	AA72SA	9550166660	CH34593	2-303-766-02	53214	3070873-3	53164-3	3105893-5	CH34627-1
709525	AA134S-1	9550168770	CH34595	2-303-767-02	53215	3070873-4	53164-4	3105901-1	53338-1
3010880	6860337	9550175400	CH34745	2-303-768-03	53216-1	3070967-1	CH31621A	3105902-1	53339-1
3011871	53402-02	5007M32P2	AA30S-9A	2-303-769-03	53217-1	3071590-10	53142-10	3107371-01	53067-21
3014054	AGF2-6	3105893-5	CH34627	26519-1	FHE159-6	3071590-11	53142-11	3107371-02	53067-38.5
3017452	6860326	N/A	CH34630	3001430-1	CH31641	3071590-12	53142-12	3108407-01	53057
3035102	CH34055	5000471-01	CH53568-1	3001430-2	CH31642	3071590-13	53142-13	3117291-01	53335-01
3035333	50383-K	5000472-01	CH53568-2	3003119-1	CH31767	3074541-1	CH31815	3117463-01	CH34668-1
3035882	CH34406	6805734	FS89-1	3003119-2	CH31768	3074541-3	CH31815-1	3118347-01	53300-1
3038915	53302	1-300-197-03	FHE113-10	3038100-5	CH92074-2	3074541-4	CH31815-2	3118347-02	53300-2
3039828	FHE246-4	1-300-348-06	CH34016	3038100-6	CH92074-6	30C1132-03	CH92051-2	3119400-01	CH34659-3
3900274	CH34511	1-300-348-07	CH34016-1	3038110-6	CH34826-6	30C1132-05	CH92051-4	3119829-01	CH53399-01
4952793	CH92073-1	1305M52P09	CH31905	3038111-1	53542-1	30C1133-03	CH53483-5	3119832-01	CH53399-04
4952382	CH34834	1337M46P01	6800948	3041996-01	CH92028	30C1356-03	CH31929-3	3119832-02	CH53399-09

* indicates that FAA-PMA is pending

**gasket included

(E) indicates exciter available for application

(O) equivalent OEM P/N

(T3) Pin Style

(T5) Button Style



PART NUMBER CROSS-REFERENCE

OEM P/N	CHAMPION P/N	OEM P/N	CHAMPION P/N	OEM P/N	CHAMPION P/N	CHAMPION P/N	OEM P/N	CHAMPION P/N	OEM P/N
3119833-01	CH53399-07	369876-19	50221-19	3888002-1	FHE159-6	4096T96P03	CH53515-3	CBS111-2	FHE267-2A
3119834-01	CH53399-08	369876-21	50221-21	3888002-2	CH34313	4096T96P04	CH53515-4	CBS112/4	CH34177
3119834-01	CH53399-08	369876-22	50221-22	3888002-5	CH34706	4096T96P07	CH53515-1	CBS113-1,2	CH34126
3119835-01	CH53399-05	369876-24	50221-24	3888058-7	CH92036	4096T96P08	CH53515-2	CBS116	FHE205B
3119835-02	CH53399-10	369876-25	50221-25	3888076-3	53109-3	4096T96P11	CH53515-5	CH34760-1	CH34760-1
3119836-01	CH53399-06	369876-28	50221-28	3888096-1	CH34249	4951693-3	CH53539-3	CH34829	CH34829
3120676-01	53367-01	369876-29	50221-29	3888096-2	CH34492	4951693-4	CH53539-4	CH53538-4	CH53538-4
3120880-01	CH34723	369876-31	50221-31	3888096-3	CH34553	4952846	CH34856	CH92077	CH92077
3120953-01	CH34643-1	369876-32	50221-32	3888096-4	CH34585	495296	CH92073-2	CR103	FHE176A
3121144-02	CH53442-4	369876-33	50221-33	3888210-1	CH31824	500471-01	CH53568-1	CR104-2	FHE19-6L
3121147-01	CH53442-2	369876-6	50221-6	3888267-4	CH34803	500472-01	CH53568-2	CR114-2	FHE164E
3121914-01	CH53450	369876-7	50221-7	3888267-7	CH34731	5044T67P07	CH34419	JS100A1	CH31964
3122413-07	CH92043-2	369876-8	50221-8	3888302-15	53359-15	51J015	CH31923-5	L907030	CH34736
3122413-08	CH92043-3	369876-9	50221-9	3888302-16	53359-16	50U683	CH53551-1	L907031	CH34743
3122414-04	CH53456-2	369949-1	FS118-1A	3888302-18	53359-18	5U0072	CH53564	L907032	CH34761
3122415-03	CH31918-2	369949-1T	FS118-1A	3888302-3	53359-3	75153R	FS47-11	L912017	YW90
3122957-01	CH53442-3	369949-3	CH31547C	3888302-6	53359-6	78214	CH31967	L912018	YA211-25
3123061-01	CH53463	369964-4	FS153-1	3888302-9	53359-9	9101M37P36	AA138S-4B	L912019	Y183-5
31B3615-02	CH53238-1	369964-4	FS153-1**	3888316-1	53368-1	9101M37P71	CH31843	L912023	Y183-6
31B5168-01	CH34682	369964-5	CH31615	38888283-2	53331-2	9238M66P05	CH92100	M677	6800087
31J1552-01	CH34804-3	369964-6	CH31713	38888283-4	53331-4	9238M66P07	CH92100	WB3888353-3	53348-3
369259-7	50160-7	37B200275P102	CH34095	3910351-01	50383-L	9238M66P08	CH92100	WB3888353-4	53348-4
369259-20	50160-20	37C311124	FHE146-7A	4026T27P01	FHE111-30	9276M36P05	CH31706D	WB3888401-1	CH34730
369259-47	50160-47	3876131-1	CH31801	4048T30P06	FHE256-10A	9339M26P13	CH53552-1	WB3888446-1	CH31930
369259-48	50160-48	3876132-1	53179-1	4048T30P07	FHE256-10B	9339M26P14	CH53552-2		
369259-61	50160-61	3876132-12	53179-12	4048T30P10	CH34661	9387M23P01	CH31772A		
369876-12	50221-12	3876132-6	53179-6	4053T22P01	CH34158	9387M23P09	CH31904-2		
369876-15	50221-15	3876132-7	53179-7	4053T22P06	CH34439	9387M24P16	CH53569-1		
369876-16	50221-16	3876132-8	53179-8	4096T38P10	CH31858-1	9387M24P17	CH53569-2		
369876-17	50221-17	388076-1	53109-1	4096T38P10	CH31858-2	9387M24P18	CH53569-3		
369876-18	50221-18	388706-2	53109-2	4096T33P07	CH31926	9392M95P05	CH31753A		

* indicates that FAA-PMA is pending

**gasket included

(E) indicates exister available for application

(O) equivalent OEM P/N

(T3) Pin Style

(T5) Button Style

CHAMPION AEROSPACE PRODUCTS WARRANTY SPARK PLUGS, IGNITERS, OIL FILTERS, LEADS & EXCITERS

Champion Aerospace LLC ("Champion") warrants that spark plugs, harnesses, oil filter, exciters, leads and igniters sold by it are, at the time of delivery, free from defects in material and workmanship, provided that no warranty is made with respect to:

- (a) any product that has been subject to negligence, accident or improper storage;
- (b) any product that has been improperly installed or maintained; or
- (c) any product that has been operated beyond normal or recommended replacement intervals or wear limits.

Champion's obligation under this warranty is limited to the replacement of, or at Champion's option, the return of the purchase price of any product which is returned to Champion or its designated representative (at customer's expense) within one (1) year from the date of purchase and which, upon inspection by Champion, is found by Champion to be defective in material or workmanship. Champion shall not be responsible for the cost of labor removing any defective product or installing any replacement product.

THE AFORESAID WARRANTY IS EXCLUSIVE AND IN LIEU OF ALL OTHER WARRANTIES, WHETHER EXPRESSED, IMPLIED OR STATUTORY, INCLUDING, BUT NOT BY WAY OF LIMITATION, ANY WARRANTY OF MERCHANTABILITY OR FITNESS FOR ANY PARTICULAR PURPOSE.

NOTE: All service tools and test equipment bearing the Champion logo are distributed by Kell-Strom Tool Company, Inc. under license from Champion Aerospace LLC and are subject to the terms of a separate warranty provided by Kell-Strom Tool Company, Inc. All claims in connection with such products should be referred to Kell-Strom Tool Company, Inc., 214 Church Street, Wethersfield, CT 06109.

CHAMPION AEROSPACE LLC LIMITATION OF LIABILITY

If Champion Aerospace LLC ("Champion") breaches any of its obligations to Distributor in connection with the sale of any products to Distributor, whether the breach is one of the warranty or for any cause whatsoever, whether in contract or in tort including negligence, Champion may request the return of the products and tender to Distributor the purchase price theretofore paid by Distributor and, in such event, Champion shall have no further redelivery of the products. If Champion so requests the return of the products, Distributor shall redeliver the products to Champion in accordance with Champion's instructions at Champion's expense. THE REMEDIES PROVIDED HEREIN AND IN CHAMPION'S WARRANTY SHALL CONSTITUTE THE SOLE RECOURSE OF DISTRIBUTOR AGAINST CHAMPION FOR BREACH OF ANY OF CHAMPION'S OBLIGATIONS IN CONNECTION WITH THE SALE OF ANY PRODUCTS TO DISTRIBUTOR, WHETHER THE CLAIM IS MADE IN TORT OR IN CONTRACT, INCLUDING CLAIMS BASED ON WARRANTY, NEGLIGENCE, STRICT LIABILITY, DECEIT FRAUD, MISREPRESENTATION OR OTHERWISE.

IN NO EVENT SHALL CHAMPION BE LIABLE FOR SPECIAL, INDIRECT, INCIDENTAL OR CONSEQUENTIAL DAMAGES (REGARDLESS OF THE FORM OF ACTION, WHETHER IN CONTRACT OR IN TORT INCLUDING NEGLIGENCE) NOR LOST PROFITS, NOR SHALL CHAMPION'S LIABILITY FOR ANY CLAIMS OR DAMAGE ARISING OUT OF OR CONNECTED WITH THE MANUFACTURE, SALE, DELIVERY OR USE OF ANY PRODUCTS EXCEED THE PURCHASE PRICE OF THE PRODUCTS.

Warranty Terminology

The following serves as a basic explanation of some of the terms used in the Champion warranty. In no event does the following amend or expand Champion's warranty. Furthermore, paragraph 3 through 9 lists several examples which are in no way exclusive to any other scenario.

1. Defect in Material. Defect in the materials used in the product. Examples: a defect in the metal used in this product.
2. Defect in Workmanship. Defect in the workmanship involved in the direct manufacture of the product.
3. Negligence. Any type of mishandling or unreasonable handling of the product or handling of the product which results in damage.
4. Accident. An event beyond the reasonable control of the person involved.
5. Improper Storage. Storage in any environment or location which may cause damage. Example: storage of the product outside of the protective poly tubes.
6. Improperly Installed. Installation not in strict accordance with Champion's specifications. Example: the use of pliers instead of an approved wrench to tighten the product. Example: the installation of the product of an unapproved application.
7. Improperly Maintained. Maintenance not in strict accordance with Champion's specifications. Example: the failure to inspect or replace at the specified or proper time (hours or cycles).
8. Operated Beyond Normal or Recommended Replacement Intervals. Operation beyond normal replacement levels. Example: the continued operation of an igniter at 401 cycles if it requires, by use or specification, replacement at 400 cycles.
9. Operated Beyond Normal or Recommended Wear Limits. Operation beyond normal wear or recommended limits. Example: the continued operation of an igniter 8.34 mm if, by use or specification, it has a maximum ground electrode (shell) erosion limit of 8.33 mm (.328 in.).

Any igniter that has been subjected to:

Negligence	Improper Maintenance
Accident	Operated Beyond Replacement Interval
Improper Storage	Operated Beyond Wear Limits (collectively, the "Factors")
Improper Installation	

... is beyond warranty coverage. Champion is in no way responsible for ascertaining the presence of any of the above factors; instead, the party to whom Champion extends the warranty is responsible to insure that the above factors do not exist.

If an igniter is replaced during troubleshooting and Champion finds the igniter to be serviceable per the approved Component Maintenance Manual or Igniter Technical Notice and Champion notes no material or workmanship defect during the investigation, or notes or discovers the existence of one or more of the Factors, Champion will not allow warranty replacement or credit.

If Champion notes a material or workmanship defect at the warranty investigation and notes that no Factors exist, a replacement or credit will be issued in accordance with the Champion Aerospace LLC Warranty Statement.

For Technical Assistance Contact:
Champion Aerospace LLC
Product Support/Technical Services
1230 Old Norris Road Liberty, SC 29657
864-843-1162
Email: support@champaero.com



Champion Aerospace LLC

Committed to the Aviation Industry

Our investment in aviation extends far beyond the manufacture and sale of spark plugs, filters, leads, exciters, and igniters. We actively support the industry groups shown here through direct and associate memberships.



Aviation Distributors & Manufacturers Association



Professional Aviation Maintenance Association

Distributed By:



Bringing Power to Flight®
REVISED MAY 2009

PRINTED IN THE USA
097700